

## Product datasheet for **RC207624**

### CHRNA5 (NM\_000745) Human Tagged ORF Clone

#### Product data:

Product Type:	Expression Plasmids
Product Name:	CHRNA5 (NM_000745) Human Tagged ORF Clone
Tag:	Myc-DDK
Symbol:	CHRNA5
Synonyms:	LNCR2
Mammalian Cell Selection:	Neomycin
Vector:	pCMV6-Entry (PS100001)
E. coli Selection:	Kanamycin (25 ug/mL)



[View online »](#)

**ORF Nucleotide Sequence:**

>RC207624 ORF sequence  
 Red=Cloning site Blue=ORF Green=Tags(s)

TTTTGTAATACGACTCACTATAGGGCGGCCGGGAATTCGTCGACTGGATCCGGTACCGAGGAGATCTGCC  
 GCC**CGATCGCC**

ATGGCGGCGCGGGGTCAGGGCCCCGCGCTCCGCTGTGCTCTTGGTCCAGCTGGTCGCGGGGCGCT  
 GCGGTCTAGCGGGCGCGCGGGCGCGCAGAGAGGATTATCTGAACCTTCTTCTATTGCAAAACATGA  
 AGATAGTTTGCTTAAGGATTTATTTCAAGACTACGAAAGATGGGTTCTGCTCCTGTGGAACACCTGAATGAC  
 AAAATAAAAAATAAATTTGGACTTGCAATATCTCAATTGGTGGATGTGGATGAGAAAAATCAGTTAATGA  
 CAACAAACGTCTGGTTGAAACAGGAATGGATAGATGTAAAATTAAGATGGAACCCGTATGACTATGGTGG  
 AATAAAAGTTATACGTGTTCTTCAGACTCTGTCTGGACACCAGACATCGTTTTTGTGATAATGCAGAT  
 GGACGTTTTGAAGGACCAGTACGAAAACAGTCATCAGGTACAATGGCACTGTACCTGGACTCCACCGG  
 CAAACTACAAAAGTTCCTGTACCATAGATGTCAGTTTTTCCCATTTGACCTTCAGAAGTGTCCATGAA  
 ATTTGGTCTTGGACTTATGATGGATCACAGTTGATATAATTCTAGAGGACCAAGATGTAGACAAGAGA  
 GATTTTTTTGATAATGGAGAATGGGAGATTGTGAGTGCAACAGGGAGCAAAGGAAACAGAACCGACAGCT  
 GTTGCTGGTATCCGTATGCACTTACTCATTTGTAATCAAGCGCCTGCCTCTCTTTTATACCTTGTCTCT  
 TATAATACCCTGTATTGGGCTCTCATTTTTAAGTACTTGTCTTCTATCTTCTTCAAATGAAGGTGAA  
 AAGATTTGTCTCTGCACTTCACTTGTGCTTTGACTGTCTTCTTCTGGTATTGAAGAGATCATAC  
 CATCATCTTCAAAGTACACCTCTAATGGAGAGTATCTGGTATTTACCATGATTTTTGTGACTGTGTC  
 AATTATGGTAACCGTCTTCGCTATCAACATTCATCATCGTTCTTCTCAACACATAATGCCATGGCGCT  
 TTGGTCCGCAAGATATTTCTTACACGCTTCCAACTGCTTTGCATGAGAAGTCATGTAGACAGGTACT  
 TCACTCAGAAAGAGGAACTGAGAGTGGTAGTGACCAAAATCTCTAGAAACACATTGGAAGTGGCGCT  
 CGATTCTATTCGCTACATTACAAGACACATCATGAAGGAAAATGATGTCGGTGAGGTTGTTGAAGATTGG  
 AAATTCATAGCCAGGTTCTTGATCGGATGTTTCTGTGGACTTTTCTTTTCGTTTCAATTGTTGGATCTC  
 TTGGGCTTTTTGTTCTGTTATTATAAATGGGCAAAATATTAATAACAGTTTCATATTGAAATGCAAA  
 TAAG

AG**CGGACCG**ACGCGTACGCGGCCGCTCGAGCAGAACTCATCTCAGAAGAGGATCTGGCAGCAAATGATATCC  
 TGGATTACAAGGATGACGACGATAAGGTTAA

**Protein Sequence:**

>RC207624 protein sequence  
 Red=Cloning site Green=Tags(s)

MAARGSGPRALRLLLLVQLVAGRCGLAGAAGQAQRLSEPSSIAKHEDSLLKDLFQDYERWVRPVEHLND  
 KIKIKFGLAISQLVDVDEKNQLMTTNVWLKQEWIDVKLRWNPDDYGGIKVIRVPSDSVWTPDIVLFDNAD  
 GRFEGTSTKTIVIRYNGTVTWPANYKSSCTIDVTFPPFDLQNCMSKFGSWTYDGSQVDIILEDQDVKR  
 DFFDNGEWEIVSATGSKGNRTDSCWYPYVYTSFVIKRLPLFYTLFLIIPCIGLSFLTIVLVPFVLPNEGE  
 KICLCTSVLVSLTVFLLVIEEIIIPSSSKVIPLIGEYLVFTMIFVTLSIMVTVFAINIHRSSSTHNAMAP  
 LVRKIFLHLPKLLCMRSHVDYFTQKEETESGSGPKSSRNTLEAALDSIRYITRHMKENDVREVVEDW  
 KFIAQVLDRMFLWTFVIVSIVGSLGLFVPIYKWANILIPVHIGNANK

SGP**TRTRPLEQKLI**SEEDLAANDILDYKDDDDK**V**

**Chromatograms:**

[https://cdn.origene.com/chromatograms/mk6186\\_h06.zip](https://cdn.origene.com/chromatograms/mk6186_h06.zip)

**Restriction Sites:**

Sgfl-RsrII

**Cloning Scheme:**


**ACCN:** NM\_000745

**ORF Size:** 1404 bp

**OTI Disclaimer:** The molecular sequence of this clone aligns with the gene accession number as a point of reference only. However, individual transcript sequences of the same gene can differ through naturally occurring variations (e.g. polymorphisms), each with its own valid existence. This clone is substantially in agreement with the reference, but a complete review of all prevailing variants is recommended prior to use. [More info](#)

**OTI Annotation:** This clone was engineered to express the complete ORF with an expression tag. Expression varies depending on the nature of the gene.

**Components:** The ORF clone is ion-exchange column purified and shipped in a 2D barcoded Matrix tube containing 10ug of transfection-ready, dried plasmid DNA (reconstitute with 100 ul of water).

**Reconstitution Method:**

1. Centrifuge at 5,000xg for 5min.
2. Carefully open the tube and add 100ul of sterile water to dissolve the DNA.
3. Close the tube and incubate for 10 minutes at room temperature.
4. Briefly vortex the tube and then do a quick spin (less than 5000xg) to concentrate the liquid at the bottom.
5. Store the suspended plasmid at -20°C. The DNA is stable for at least one year from date of shipping when stored at -20°C.

**RefSeq:** [NM\\_000745.3](#)

**RefSeq Size:** 3646 bp

**RefSeq ORF:** 1407 bp

**Locus ID:** 1138

**UniProt ID:** [P30532](#)

**Cytogenetics:** 15q25.1

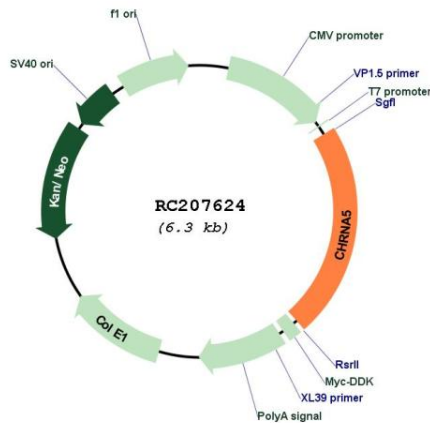
**Domains:** Neur\_chan\_memb, Neur\_chan\_LBD

**Protein Families:** Druggable Genome, Ion Channels: Cys-loop Receptors, Transmembrane

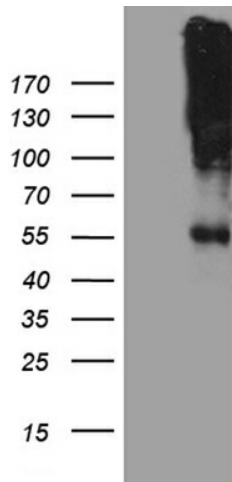
**MW:** 53.1 kDa

**Gene Summary:** The protein encoded by this gene is a nicotinic acetylcholine receptor subunit and a member of a superfamily of ligand-gated ion channels that mediate fast signal transmission at synapses. These receptors are thought to be heteropentamers composed of separate but similar subunits. Defects in this gene have been linked to susceptibility to lung cancer type 2 (LNCR2).[provided by RefSeq, Jun 2010]

**Product images:**



Circular map for RC207624



HEK293T cells were transfected with the pCMV6-ENTRY control (Cat# [PS100001], Left lane) or pCMV6-ENTRY CHRNA5 (Cat# RC207624, Right lane) cDNA for 48 hrs and lysed. Equivalent amounts of cell lysates (5 ug per lane) were separated by SDS-PAGE and immunoblotted with anti-CHRNA5 (Cat# [TA810073])(1:500).