

Product datasheet for **RC207618**

LSAMP (NM_002338) Human Tagged ORF Clone

Product data:

Product Type:	Expression Plasmids
Product Name:	LSAMP (NM_002338) Human Tagged ORF Clone
Tag:	Myc-DDK
Symbol:	LSAMP
Synonyms:	IGLON3; LAMP
Mammalian Cell Selection:	Neomycin
Vector:	pCMV6-Entry (PS100001)
E. coli Selection:	Kanamycin (25 ug/mL)
ORF Nucleotide Sequence:	>RC207618 ORF sequence Red=Cloning site Blue=ORF Green=Tags(s)

TTTTGTAATACGACTCACTATAGGGCGGCCGGAATTCGTCGACTGGATCCGGTACCGAGGAGATCTGCC
GCC**CGATCGCC**

ATGGTCAGGAGAGTTCAGCCGGATCGGAAACAGTTGCCACTGGTCTACTGAGATTGCTCTGCCTTCTTC
CCACAGGACTGCCTGTTTCGACGGTGGATTTTAACCGAGGCACGGACAACATCACCGTGAGGCAGGGGGA
CACAGCCATCCTCAGGTGCGTTGTAGAAGACAAGAAGCTCAAAGGTGGCCTGGTTGAACCGTTCTGGCATC
ATTTTTGCTGGACATGACAAGTGGTCTCTGGACCCACGGGTTGAGCTGGAGAAACGCCATTCTCTGGAAT
ACAGCCTCCGAATCCAGAAGGTGGATGTCTATGATGAGGGTTCCTACACTTGCTCAGTTCAGACACAGCA
TGAGCCCAAGACCTCCCAAGTTTACTTGATCGTACAAGTCCCACCAAGATCTCCAATATCTCCTCGGAT
GTCACTGTGAATGAGGGCAGCAACGTGACTCTGGTCTGCATGGCCAATGGCCGTCCTGAACCTGTTATCA
CCTGGAGACACCTTACACCAACTGGAAGGGAATTTGAAGGAGAAGAAGAAATATCTGGAGATCCTTGGCAT
CACCAGGGAGCAGTCAGGCAAAATGAGTGCAAAGCTGCCAACGAGGTCTCCTCGCGGATGTCAAACAA
GTCAAGGTCACTGTGAATATCCTCCCACTATCACAGAATCCAAGAGCAATGAAGCCACCACAGGACGAC
AAGCTTCACTCAAATGTGAGGCCTCGGCAGTGCCTGCACCTGACTTTGAGTGGTACCGGGATGACACTAG
GATAAATAGTGCCAAATGGCCTTGAGATTAAGAGCACGGAGGGCCAGTCTCCCTGACGGTGACCAACGTC
ACTGAGGAGCACTACGGCAACTACACCTGTGGCTGCCAACAAGCTGGGGTCCACCAATGCCAGCCTAG
TCCTTTTCAGACCTGGTTCGGTGAGAGGAATAAATGGATCCATCAGTCTGGCCGTACCACTGTGGCTGCT
GGCAGCATCTCTGCTCTGCCTTCTCAGCAAATGT

ACGCGTACGCGGCCGCTCGAGCAGAAACTCATCTCAGAAGAGGATCTGGCAGCAAATGATATCCTGGATT
ACAAGGATGACGACGATAAGGTTTAA



[View online »](#)

Protein Sequence: >RC207618 protein sequence
Red=Cloning site Green=Tags(s)

MVRRVQPDQRKQLPLVLLRLLCLLPTGLPVRVDFNRGTDNITVRQGDTAILRCVVEDKNSKVAWLNRSGL
 IFAGHDKWLDPRVELEKRHSLEYSRLRIQKVDVYDEGSYTCVSVQTQHEPKTSQVYLIVQVPPKISNISD
 VTNVEGNSVTLVCMANGRPEPVITWRHLTPTGREFEGEEYEILGITREQSGKYECKAANEVSSADVKQ
 VKVTVNYPPPTITESKSNEATTGRQASLKCEASAVPAPDFEYRDDTRINSANGLEIKSTEGQSSLTVTNY
 TEEHYGNYTCVAANKLGVTNASLVLFRPGSVRGINGSISLAVPLWLLAASLLCLLSKC

TRTRPLEQKLISEEDLAANDILDYKDDDDKV

Chromatograms: https://cdn.origene.com/chromatograms/mk6019_e09.zip

Restriction Sites: SgfI-MluI

Cloning Scheme:



ACCN: NM_002338

ORF Size: 1014 bp

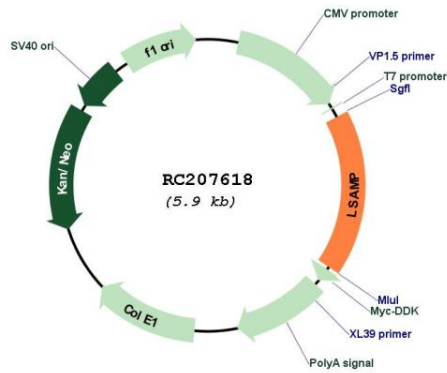
OTI Disclaimer: The molecular sequence of this clone aligns with the gene accession number as a point of reference only. However, individual transcript sequences of the same gene can differ through naturally occurring variations (e.g. polymorphisms), each with its own valid existence. This clone is substantially in agreement with the reference, but a complete review of all prevailing variants is recommended prior to use. [More info](#)

OTI Annotation: This clone was engineered to express the complete ORF with an expression tag. Expression varies depending on the nature of the gene.

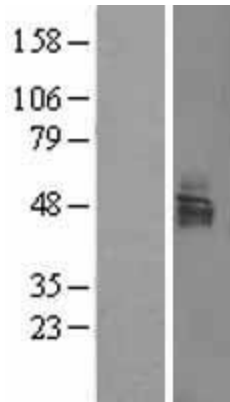
Components: The ORF clone is ion-exchange column purified and shipped in a 2D barcoded Matrix tube containing 10ug of transfection-ready, dried plasmid DNA (reconstitute with 100 ul of water).

Reconstitution Method:	<ol style="list-style-type: none">1. Centrifuge at 5,000xg for 5min.2. Carefully open the tube and add 100ul of sterile water to dissolve the DNA.3. Close the tube and incubate for 10 minutes at room temperature.4. Briefly vortex the tube and then do a quick spin (less than 5000xg) to concentrate the liquid at the bottom.5. Store the suspended plasmid at -20°C. The DNA is stable for at least one year from date of shipping when stored at -20°C.
Note:	Plasmids are not sterile. For experiments where strict sterility is required, filtration with 0.22um filter is required.
RefSeq:	NM_002338.5
RefSeq Size:	9478 bp
RefSeq ORF:	1017 bp
Locus ID:	4045
UniProt ID:	Q13449
Cytogenetics:	3q13.31
Domains:	ig, IGc2, IG
Protein Families:	Transmembrane
MW:	37.4 kDa
Gene Summary:	This gene encodes a member of the immunoglobulin LAMP, OBCAM and neurotrimin (IgLON) family of proteins. The encoded preproprotein is proteolytically processed to generate a neuronal surface glycoprotein. This protein may act as a selective homophilic adhesion molecule during axon guidance and neuronal growth in the developing limbic system. The encoded protein may also function as a tumor suppressor and may play a role in neuropsychiatric disorders. Alternative splicing results in multiple transcript variants, at least one of which encodes a preproprotein that is proteolytically processed. [provided by RefSeq, Jan 2016]

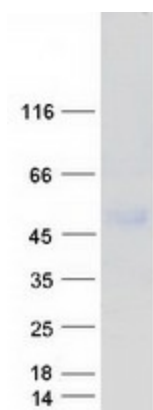
Product images:



Circular map for RC207618



Western blot validation of overexpression lysate (Cat# [LY400840]) using anti-DDK antibody (Cat# [TA50011-100]). Left: Cell lysates from untransfected HEK293T cells; Right: Cell lysates from HEK293T cells transfected with RC207618 using transfection reagent MegaTran 2.0 (Cat# [TT210002]).



Coomassie blue staining of purified LSAMP protein (Cat# [TP307618]). The protein was produced from HEK293T cells transfected with LSAMP cDNA clone (Cat# RC207618) using MegaTran 2.0 (Cat# [TT210002]).