

## Product datasheet for RC207609

### PRELP (NM\_201348) Human Tagged ORF Clone

#### Product data:

Product Type:	Expression Plasmids
Product Name:	PRELP (NM_201348) Human Tagged ORF Clone
Tag:	Myc-DDK
Symbol:	PRELP
Synonyms:	MST161; MSTP161; SLRR2A
Mammalian Cell Selection:	Neomycin
Vector:	pCMV6-Entry (PS100001)
E. coli Selection:	Kanamycin (25 ug/mL)
ORF Nucleotide Sequence:	>RC207609 ORF sequence Red=Cloning site Blue=ORF Green=Tags(s)

TTTTGTAATACGACTCACTATAGGGCGGCCGGAATTCGTCGACTGGATCCGGTACCGAGGAGATCTGCC  
GCC**CGATCGCC**

ATGAGGTCACCCCTCTGCTGGCTCCTCCCACTTCTCATCTTGGCCTCAGTGGCCCAAGGCCAGCCAACA  
GACGACCAAGACCCGGGACTGGGCCGGGCGCAGACCCAGGCCAGGCCAGGCCACACCCAGCTTTCC  
TCAGCCTGATGAACCAGCAGAGCCAACAGACCTGCCTCCTCCCTCCCTCCAGGCCCTCCATCTATCTTC  
CCTGACTGTCCCGCAATGCTACTGCCCCCTGATTTCCCATCTGCCCTCTACTGTGATAGCCGCAACC  
TGCAGAAAGTCCCTGTCAATCCCGCCCGCATCCATTACCTCTATCTCCAGAACAACCTTCATCACTGAGCT  
CCCGGTGGAGTCCCTCCAGAATGCCACAGGCCTGCGATGGATTAACCTGGACAACAACCGAATCCGCAAG  
ATAGACCAGAGGGTGCTGGAGAACTGCCCGGCCCTGGTGTTCCTCTACATGGAGAAGAACCAGTTGGAAG  
AGGTCCCCTCGGCCCTGCCCGGAACCTGGAGCAGCTGAGGCTGAGCCAGAACCACATCTCCAGAATCCC  
GCCTGGTGTCTTCAGCAAGCTGGAGAACCTGCTGCTCCTGGATCTCCAGCACAACAGGCTGAGCGACGGC  
GTCTTCAAGCCGACACCTTCCATGGCCTCAAGAACCTCATGCAGCTCAACCTGGCCACAACATCCTGA  
GAAAGATGCCGCCAGGGTCCCCACCGCATTACCAGCTCTACCTGGACAGTAAACAAGATTGAGACCAT  
CCCTAACGGATACTTCAAGAGCTTTCCCAATCTGCCTTCATTCGGCTTAACTACAACAAGCTGACAGAC  
AGGGGACTCCCCAAGAACTCCTTAAATATCTCCAACCTGCTTGTGCTCCACCTGTCCCAACAACAGGATCA  
GCAGTGTGCCCGCATCAACAACAGGCTGGAACACCTGTACTCAACAACAATAGCATCGAGAAAATCAA  
CGGAACCCAGATTTGCCCAACGACCTAGTGGCGTTCCATGACTTCTCCTCGGACCTGGAGAACGTGCCA  
CACCTGCGCTACCTGCGGCTGGATGAAACTACTTGAAGCCGCCATCCCCTGGACCTCATGATGTGCT  
TCCGCTCCTGCAGTCCGTGGTCATC

**ACGCGT**ACGCGGCCGCTCGAGCAGAAACTCATCTCAGAAGAGGATCTGGCAGCAAATGATATCCTGGATT  
ACAAGGATGACGACGATAAGGTTTAA



[View online »](#)



**Reconstitution Method:**

1. Centrifuge at 5,000xg for 5min.
2. Carefully open the tube and add 100ul of sterile water to dissolve the DNA.
3. Close the tube and incubate for 10 minutes at room temperature.
4. Briefly vortex the tube and then do a quick spin (less than 5000xg) to concentrate the liquid at the bottom.
5. Store the suspended plasmid at -20°C. The DNA is stable for at least one year from date of shipping when stored at -20°C.

**RefSeq:** [NM\\_201348.2](#)

**RefSeq Size:** 5823 bp

**RefSeq ORF:** 1149 bp

**Locus ID:** 5549

**UniProt ID:** [P51888](#)

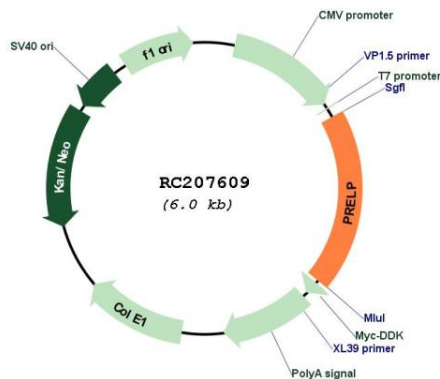
**Cytogenetics:** 1q32.1

**Protein Families:** Secreted Protein

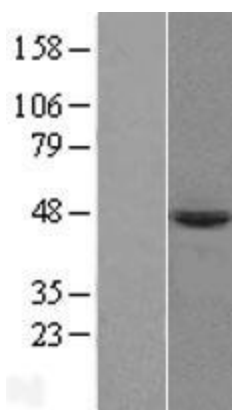
**MW:** 43.8 kDa

**Gene Summary:** The protein encoded by this gene is a leucine-rich repeat protein present in connective tissue extracellular matrix. This protein functions as a molecule anchoring basement membranes to the underlying connective tissue. This protein has been shown to bind type I collagen to basement membranes and type II collagen to cartilage. It also binds the basement membrane heparan sulfate proteoglycan perlecan. This protein is suggested to be involved in the pathogenesis of Hutchinson-Gilford progeria (HGP), which is reported to lack the binding of collagen in basement membranes and cartilage. Alternatively spliced transcript variants encoding the same protein have been observed. [provided by RefSeq, Jul 2008]

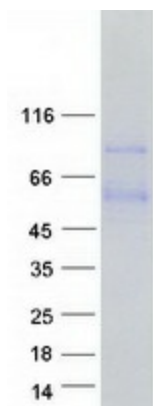
**Product images:**



Circular map for RC207609



Western blot validation of overexpression lysate (Cat# [LY404518]) using anti-DDK antibody (Cat# [TA50011-100]). Left: Cell lysates from untransfected HEK293T cells; Right: Cell lysates from HEK293T cells transfected with RC207609 using transfection reagent MegaTran 2.0 (Cat# [TT210002]).



Coomassie blue staining of purified PRELP protein (Cat# [TP307609]). The protein was produced from HEK293T cells transfected with PRELP cDNA clone (Cat# RC207609) using MegaTran 2.0 (Cat# [TT210002]).