

## Product datasheet for **RC207606**

### SET (NM\_003011) Human Tagged ORF Clone

#### Product data:

|                           |   |
|---------------------------|---|
| Product Type:             | Expression Plasmids   |
| Product Name:             | SET (NM_003011) Human Tagged ORF Clone                            |
| Tag:                      | Myc-DDK   |
| Symbol:                   | SET   |
| Synonyms:                 | 2PP2A; I2PP2A; IGAAD; IPP2A2; MRD58; PHAPII; TAF-I; TAF-IBETA     |
| Mammalian Cell Selection: | Neomycin  |
| Vector:                   | pCMV6-Entry (PS100001)  |
| E. coli Selection:        | Kanamycin (25 ug/mL)  |
| ORF Nucleotide Sequence:  | >RC207606 ORF sequence<br>Red=Cloning site Blue=ORF Green=Tags(s) |

TTTTGTAATACGACTCACTATAGGGCGGCCGGAATTCGTCGACTGGATCCGGTACCGAGGAGATCTGCC  
GCC**CGATCGCC**

ATGTCGGCGCCGGCGCCAAAGTCAGTAAAAAGGAGCTCAACTCCAACCACGACGGGGCCGACGAGACCT  
CAGAAAAAGAACAGCAAGAAGCGATTGAACACATTGATGAAGTACAAAATGAAATAGACAGACTTAATGA  
ACAAGCCAGTGAGGAGATTTTGAAGTAGAACAGAAATAACAACTCCGCCAACCATTTTTTCAGAAG  
AGGTCAGAATTGATCGCCAAAATCCAAATTTTGGGTAACAACATTTGTCAACCATCCACAAGTGTCTG  
CACTGCTTGGGGAGGAAGATGAAGAGGCACTGCATTATTTGACCAGAGTTGAAGTGACAGAATTTGAAGA  
TATTAAATCAGGTTACAGAATAGATTTTATTTTATTTGATGAAAATCCTTACTTTGAAAATAAAGTTCTCTCC  
AAAGAATTTTCATCTGAATGAGAGTGGTATCCATCTTTCGAAGTCCACCGAAATCAAATGGAAATCTGGAA  
AGGATTTGACGAAACGTTTCGAGTCAAACGCAGAAATAAGCCAGCAGGAAGAGGCAGCATGAGGAACCAGA  
GAGCTTCTTTACCTGGTTTACTGACCATTTCTGATGCAGGTGCTGATGAGTTAGGAGAGGTCATCAAAGAT  
GATATTTGGCCAAACCCATTACAGTACTACTTGGTTCCCGATATGGATGATGAAGAAGGAGAAGGAGAAG  
AAGATGATGATGATGATGAAGAGGAGGAAGGATTAGAAGATATTGACGAAGAAGGGGATGAGGATGAAGG  
TGAAGAAGATGAAGATGATGATGAAGGGGAGGAAGGAGAGGAGGATGAAGGAGAAGATGAC

**ACGCGT**ACGCGGCCGCTCGAGCAGAACTCATCTCAGAAGAGGATCTGGCAGCAAATGATATCCTGGATT  
ACAAGGATGACGACGATAAGGTTTAA

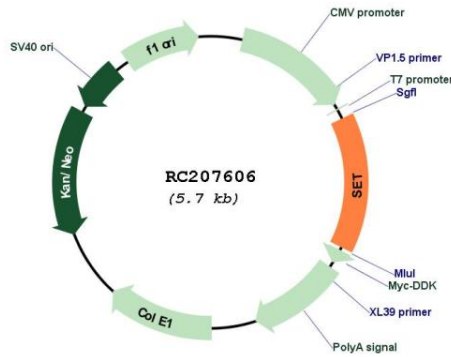


[View online »](#)

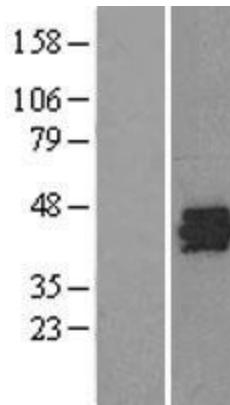


|                               |   |
|-------------------------------|---|
| <b>Reconstitution Method:</b> | <ol style="list-style-type: none"><li>1. Centrifuge at 5,000xg for 5min.</li><li>2. Carefully open the tube and add 100ul of sterile water to dissolve the DNA.</li><li>3. Close the tube and incubate for 10 minutes at room temperature.</li><li>4. Briefly vortex the tube and then do a quick spin (less than 5000xg) to concentrate the liquid at the bottom.</li><li>5. Store the suspended plasmid at -20°C. The DNA is stable for at least one year from date of shipping when stored at -20°C.</li></ol>   |
| <b>RefSeq:</b>                | <a href="#">NM_003011.4</a>   |
| <b>RefSeq Size:</b>           | 2936 bp   |
| <b>RefSeq ORF:</b>            | 834 bp  |
| <b>Locus ID:</b>              | 6418  |
| <b>UniProt ID:</b>            | <a href="#">Q01105</a>  |
| <b>Cytogenetics:</b>          | 9q34.11   |
| <b>Domains:</b>               | NAP   |
| <b>Protein Families:</b>      | Druggable Genome, Phosphatase, Stem cell - Pluripotency   |
| <b>MW:</b>                    | 32.1 kDa  |
| <b>Gene Summary:</b>          | <p>The protein encoded by this gene inhibits acetylation of nucleosomes, especially histone H4, by histone acetylases (HAT). This inhibition is most likely accomplished by masking histone lysines from being acetylated, and the consequence is to silence HAT-dependent transcription. The encoded protein is part of a complex localized to the endoplasmic reticulum but is found in the nucleus and inhibits apoptosis following attack by cytotoxic T lymphocytes. This protein can also enhance DNA replication of the adenovirus genome. Several transcript variants encoding different isoforms have been found for this gene. [provided by RefSeq, Oct 2011]</p> |

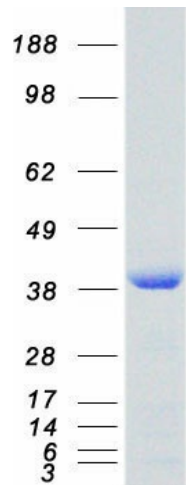
Product images:



Circular map for RC207606



Western blot validation of overexpression lysate (Cat# [LY401059]) using anti-DDK antibody (Cat# [TA50011-100]). Left: Cell lysates from untransfected HEK293T cells; Right: Cell lysates from HEK293T cells transfected with RC207606 using transfection reagent MegaTran 2.0 (Cat# [TT210002]).



Coomassie blue staining of purified SET protein (Cat# [TP307606]). The protein was produced from HEK293T cells transfected with SET cDNA clone (Cat# RC207606) using MegaTran 2.0 (Cat# [TT210002]).