

## Product datasheet for RC207600

### GPR65 (NM\_003608) Human Tagged ORF Clone

#### Product data:

Product Type:	Expression Plasmids
Product Name:	GPR65 (NM_003608) Human Tagged ORF Clone
Tag:	Myc-DDK
Symbol:	GPR65
Synonyms:	hTDAG8; TDAG8
Mammalian Cell Selection:	Neomycin
Vector:	pCMV6-Entry (PS100001)
E. coli Selection:	Kanamycin (25 ug/mL)
ORF Nucleotide Sequence:	>RC207600 ORF sequence Red=Cloning site Blue=ORF Green=Tags(s)

TTTTGTAATACGACTCACTATAGGGCGGCCGGAATTCGTCGACTGGATCCGGTACCGAGGAGATCTGCC  
GCC**CGATCGCC**

ATGAACAGCACATGTATTGAAGAACAGCATGACCTGGATCACTATTTGTTCCATTGTTTACATCTTTG  
TGATTATAGTCAGCATTCCAGCCAATATTGGATCTCTGTGTGTCTTTCCTGCAAGCAAAGAAGGAAAG  
TGAAGTACGAAATTTACCTCTTCAGTTTGTCACTATCAGATTTACTCTATGCATTAACCTCCCTTTATGG  
ATTGATTAACTTGAATAAAGACAACCTGGACTTCTCTCCTGCCTTGTGCAAAGGGAGTGCTTTTCTCA  
TGTACATGAATTTTACAGCAGCACAGCATTCCCTCACCTGCATTGCCGTTGATCGGTATTTGGCTGTTGT  
CTACCTTTGAAGTTTTTTTCCCTAAGGACAAGAAGATTTGCACTCATGGTCAGCCTGTCCATCTGGATA  
TTGGAAACCATCTTCAATGCTGTGATGTTGTGGGAAGATGAAACAGTTGTTGAATATTGGCATGCCGAAA  
AGTCTAATTTTACTTTATGCTATGACAAATACCTTTAGAGAAATGGCAAATCAACCTCAACTTGTTCAG  
GACGTGTACAGGCTATGCAATACCTTTGGTCACCATCCTGATCTGCAACCGGAAAGTCTACCAAGCTGTG  
CGGCACAATAAAGCCACGGAAAACAAGGAAAAGAAGAGAAATCATAAACTACTTGTGAGCATCACAGTTA  
CTTTTGTCTTATGCTTTACTCCCTTTTATGTGATGTTGCTGATTCGCTGCATTTTAGAGCATGCTGTGAA  
CTTCGAAGACCACAGCAATCTGGGAAGCGAAGTTACACAATGTATAGAATCACGGTTGCATTAACAAGT  
TTAAATTTGTTGCTGATCCAATCTGTACTGTTTTGTAACCGAAACAGGAAGATGATATGTGGAATA  
TATTAATTTCTGCACTGGGAGGTGTAATACATCACAAGACAAGAAAACGCATCTTTCTGTGTCTAC  
AAAAGATACTATGGAATTAGAGGTCCTTGAG

**ACGCGT**ACGCGGCCGCTCGAGCAGAACTCATCTCAGAAGAGGATCTGGCAGCAAATGATATCCTGGATT  
ACAAGGATGACGACGATAAGGTTTAA



[View online »](#)

**Protein Sequence:** >RC207600 protein sequence  
Red=Cloning site Green=Tags(s)

MNSTCIEEQHDLHDHYLFPIVYIFVIIIVSIPANIGSLCVSFLQAKKESELGIYLFSLSLSDLLYALTLPLW  
 IDYTWNKDNWTFSPALCKGSAFLMYMNFYSSTAFLTCIAVDRYLAVVYPLKFFFLRRFALMVSLSIWI  
 LETIFNAVMLWEDETVVEYCDAEKSNFTLCYDKYPLEKWQINLNLFRCTGYAIPLVITILICNRKVVYQAV  
 RHNKATENKEKKRIIKLLVSITVTFVLCFPPFHVMLLIRCILEHAVNFEDHSNSGKRTYTYMYRITVALTS  
 LNCVADPILYCFVTETGRYDMWNILKFCTGRCNTSQRQRKRILSVSTKDTMELEVEL

TRTRPLEQKLISEEDLAANDILDYKDDDDKV

**Chromatograms:** [https://cdn.origene.com/chromatograms/mk6136\\_b05.zip](https://cdn.origene.com/chromatograms/mk6136_b05.zip)

**Restriction Sites:** SgfI-MluI

**Cloning Scheme:**

Cloning sites used for ORF Shuttling:



\* The last codon before the Stop codon of the ORF

**ACCN:** NM\_003608

**ORF Size:** 1011 bp

**OTI Disclaimer:** The molecular sequence of this clone aligns with the gene accession number as a point of reference only. However, individual transcript sequences of the same gene can differ through naturally occurring variations (e.g. polymorphisms), each with its own valid existence. This clone is substantially in agreement with the reference, but a complete review of all prevailing variants is recommended prior to use. [More info](#)

**OTI Annotation:** This clone was engineered to express the complete ORF with an expression tag. Expression varies depending on the nature of the gene.

**Components:** The ORF clone is ion-exchange column purified and shipped in a 2D barcoded Matrix tube containing 10ug of transfection-ready, dried plasmid DNA (reconstitute with 100 ul of water).

**Reconstitution Method:**

1. Centrifuge at 5,000xg for 5min.
2. Carefully open the tube and add 100ul of sterile water to dissolve the DNA.
3. Close the tube and incubate for 10 minutes at room temperature.
4. Briefly vortex the tube and then do a quick spin (less than 5000xg) to concentrate the liquid at the bottom.
5. Store the suspended plasmid at -20°C. The DNA is stable for at least one year from date of shipping when stored at -20°C.

**Note:** Plasmids are not sterile. For experiments where strict sterility is required, filtration with 0.22um filter is required.

**RefSeq:** [NM\\_003608.2](#), [NP\\_003599.2](#)

**RefSeq Size:** 4522 bp

**RefSeq ORF:** 1014 bp

**Locus ID:** 8477

**UniProt ID:** [Q8IYL9](#)

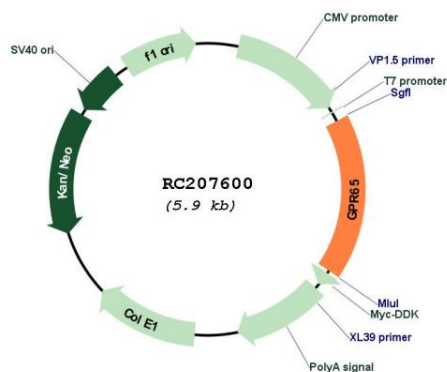
**Cytogenetics:** 14q31.3

**Protein Families:** Druggable Genome, GPCR, Transmembrane

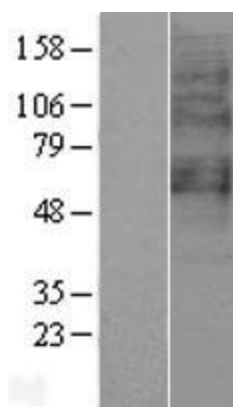
**MW:** 39.3 kDa

**Gene Summary:** Receptor for the glycosphingolipid psychosine (PSY) and several related glycosphingolipids (PubMed:11309421). Plays a role in immune response by maintaining lysosome function and supporting phagocytosis-mediated intracellular bacteria clearance (PubMed:27287411). May have a role in activation-induced cell death or differentiation of T-cells (By similarity). [UniProtKB/Swiss-Prot Function]

### Product images:



Circular map for RC207600



Western blot validation of overexpression lysate (Cat# [LY401195]) using anti-DDK antibody (Cat# [TA50011-100]). Left: Cell lysates from untransfected HEK293T cells; Right: Cell lysates from HEK293T cells transfected with RC207600 using transfection reagent MegaTran 2.0 (Cat# [TT210002]).