

## Product datasheet for **RC207590**

### GFR alpha 3 (GFRA3) (NM\_001496) Human Tagged ORF Clone

#### Product data:

Product Type:	Expression Plasmids
Product Name:	GFR alpha 3 (GFRA3) (NM_001496) Human Tagged ORF Clone
Tag:	Myc-DDK
Symbol:	GFR alpha 3
Synonyms:	GDNFR3
Mammalian Cell Selection:	Neomycin
Vector:	pCMV6-Entry (PS100001)
E. coli Selection:	Kanamycin (25 ug/mL)
ORF Nucleotide Sequence:	>RC207590 ORF sequence Red=Cloning site Blue=ORF Green=Tags(s)

TTTTGTAATACGACTCACTATAGGGCGGCCGGAATTCGTCGACTGGATCCGGTACCGAGGAGATCTGCC  
GCC**CGATCGCC**

ATGGTGCGCCCTGAACCCGCGACCGCTGCCGCCGTAGTCTGATGTTGCTGCTGCTGCCCGCT  
CGCCGCTGCCTCTCGCAGCCGGAGACCCCTTCCACAGAAAGCCGACTCATGAACAGCTGTCTCCAGGC  
CAGGAGGAAGTGCCAGGCTGATCCACCTGCAGTGTCTGCCCTACCACCACCTGGATTCTGCACCTTAGC  
ATAAGCACCCACTGCCCTCAGAGGAGCCTTCGGTCCCTGCTGACTGCCTGGAGGCAGCACAGCAACTCA  
GGAACAGCTCTCTGATAGGCTGCATGTGCCACCGCGCATGAAGAACCAGGTTGCCTGCTTGGACATCTA  
TTGGACCGTTACCGTGCCTGCAGCCTTGGTAATATGAGCTGGATGTCTCCCCCTATGAAGACACAGTG  
ACCAGCAAACCTGGAAAATGAATCTCAGCAAACCTGAACATGCTCAAACAGACTCAGACCTCTGCCTCA  
AGTTTGCCATGCTGTGACTCTCAATGACAAGTGTGACCGGCTGCGCAAGGCCTACGGGGAGGCGTGCTC  
CGGGCCCCACTGCCAGCGCCACGTCTGCCTCAGGCAGTGTCTCACTTTCTCGAGAAGGCCCGCCGAGCCC  
CACGCGCAGGGCCTGCTACTGTGCCATGTGCCCCCAACGACCGGGGTGCGGGGAGCGCCGGCGCAACA  
CCATCGCCCCAACTGCGCGCTGCCCTGTGGCCCCAACTGCCTGGAGCTGCGGCGCCTCTGCTTCTC  
CGACCCGCTTTGCAGATCACGCTGGTGGATTTCCAGACCCACTGCCATCCCATGGACATCCTAGGAACT  
TGTGCAACAGAGCAGTCCAGATGTCTACGAGCATACCTGGGGCTGATTGGGACTGCCATGACCCCAACT  
TTGTGAGCAATGTCAACACCAGTGTTCCTTAAGCTGCACCTGCCGAGGAGTGGCAACCTGCAGGAGGA  
GTGTGAAATGCTGGAAGGTTCTTCTCCACAACCCCTGCCTCACGGAGGCCATTGCAGCTAAGATGCGT  
TTTCACAGCCAACTCTTCTCCAGGACTGGCCACACCCTACCTTTGCTGTGATGGCACACCAAGATGAAA  
ACCCTGCTGTGAGGCCACAGCCCTGGGTGCCCTCTTTTTCTCTGCACGCTTCCCTTGATTCTGCTCCT  
GAGCCTATGG

**ACGCGT**ACGCGGCCGCTCGAGCAGAAACTCATCTCAGAAGAGGATCTGGCAGCAAATGATATCCTGGATT  
ACAAGGATGACGACGATAAGGTTTAA



[View online »](#)

**Protein Sequence:** >RC207590 protein sequence  
Red=Cloning site Green=Tags(s)

MVRPLNPRPLPPVVLMLLLLLPPSPLPLAAGDPLPTESRLMNSCLQARRKQADPTCSAAYHHLDSCTSS  
 ISTPLPSEEPSVPADCLEAAQQLRNSSLIGMCHRRMKNQVACLDIYWTVHRARSLGNYELDVSPYEDTV  
 TSKPWKMNLKLNMLKPDSDLCLKFAMLCNLNDKCDRLRKAYGEACSGPHCQRHVCLRQLLTFEKAAP  
 HAQGLLLCPCAPNDRGCGERRRNTIAPNCALPPVAPNCLLRRLCFSDPLCRSRLVDFQTHCHPMDILGT  
 CATEQSRCLRAYLGLIGTAMTPNFVSNVNTSVALSCTCRGSGNLQEECEMLEGFFSHNPCLTEAIAAKMR  
 FHSQLFSQDWPHTFAVMAHQENPAVRPQPWVPSLFSCTLPLILLLSLW

TRTRPLEQKLISEEDLAANDILDYKDDDDKV

**Chromatograms:** [https://cdn.origene.com/chromatograms/mk6019\\_b11.zip](https://cdn.origene.com/chromatograms/mk6019_b11.zip)

**Restriction Sites:** SgfI-MluI

**Cloning Scheme:**



\* The last codon before the Stop codon of the ORF

**ACCN:** NM\_001496

**ORF Size:** 1200 bp

**OTI Disclaimer:** The molecular sequence of this clone aligns with the gene accession number as a point of reference only. However, individual transcript sequences of the same gene can differ through naturally occurring variations (e.g. polymorphisms), each with its own valid existence. This clone is substantially in agreement with the reference, but a complete review of all prevailing variants is recommended prior to use. [More info](#)

**OTI Annotation:** This clone was engineered to express the complete ORF with an expression tag. Expression varies depending on the nature of the gene.

**Components:** The ORF clone is ion-exchange column purified and shipped in a 2D barcoded Matrix tube containing 10ug of transfection-ready, dried plasmid DNA (reconstitute with 100 ul of water).

**Reconstitution Method:**

1. Centrifuge at 5,000xg for 5min.
2. Carefully open the tube and add 100ul of sterile water to dissolve the DNA.
3. Close the tube and incubate for 10 minutes at room temperature.
4. Briefly vortex the tube and then do a quick spin (less than 5000xg) to concentrate the liquid at the bottom.
5. Store the suspended plasmid at -20°C. The DNA is stable for at least one year from date of shipping when stored at -20°C.

**Note:** Plasmids are not sterile. For experiments where strict sterility is required, filtration with 0.22um filter is required.

**RefSeq:** [NM\\_001496.4](#)

**RefSeq Size:** 1980 bp

**RefSeq ORF:** 1203 bp

**Locus ID:** 2676

**UniProt ID:** [O60609](#)

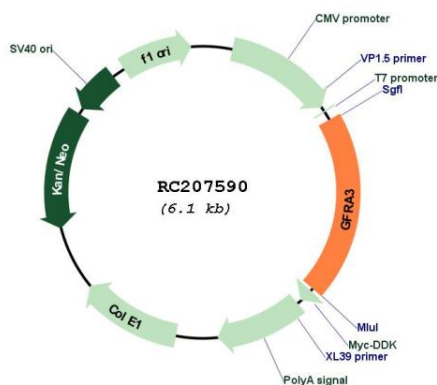
**Cytogenetics:** 5q31.2

**Protein Families:** Druggable Genome

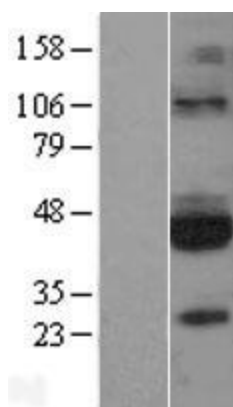
**MW:** 44.5 kDa

**Gene Summary:** The protein encoded by this gene is a glycosylphosphatidylinositol(GPI)-linked cell surface receptor and a member of the GDNF receptor family. It forms a signaling receptor complex with RET tyrosine kinase receptor and binds the ligand, artemin. [provided by RefSeq, Jul 2008]

### Product images:



Circular map for RC207590



Western blot validation of overexpression lysate (Cat# [LY400574]) using anti-DDK antibody (Cat# [TA50011-100]). Left: Cell lysates from untransfected HEK293T cells; Right: Cell lysates from HEK293T cells transfected with RC207590 using transfection reagent MegaTran 2.0 (Cat# [TT210002]).