

Product datasheet for RC207589

Somatostatin Receptor 1 (SSTR1) (NM_001049) Human Tagged ORF Clone

Product data:

Product Type:	Expression Plasmids
Product Name:	Somatostatin Receptor 1 (SSTR1) (NM_001049) Human Tagged ORF Clone
Tag:	Myc-DDK
Symbol:	Somatostatin Receptor 1
Synonyms:	SRIF-2; SS-1-R; SS1-R; SS1R
Mammalian Cell Selection:	Neomycin
Vector:	pCMV6-Entry (PS100001)
E. coli Selection:	Kanamycin (25 ug/mL)
ORF Nucleotide Sequence:	>RC207589 ORF sequence Red=Cloning site Blue=ORF Green=Tags(s)

TTTTGTAATACGACTCACTATAGGGCGGCCGGAATTCGTCGACTGGATCCGGTACCGAGGAGATCTGCC
GCC**CGATCGCC**

ATGTTCCCAATGGCACCGCCTCCTCCTCCTCCTCCTAGCCCCAGCCCGGCAGCTGCGGCGAAG
GCGGCGGCAGCAGGGGCCCGGGCCGGCGCTGCGGACGGCATGGAGGAGCCAGGGCGAAATGCGTCCCA
GAACGGGACCTTGAGCGAGGGCCAGGGCAGCGCCATCCTGATCTCTTTCATCTACTCCGTGGTGTGCTG
GTGGGGCTGTGTGGAACTCTATGGTCATCTACGTGATCCTGCGCTATGCCAAGATGAAGACGGCCACCA
ACATCTACATCCTAAATCTGGCCATTGCTGATGAGCTGCTCATGCTCAGCGTGCCCTTCTAGTCACCTC
CAGTTGTTGCGCACTGGCCCTTCGGTGCCTGCTGCGCCCTCGTGCAGCGTGGACGCGGTCAAC
ATGTTACCAGCATCTACTGTCTGACTGTGCTCAGCGTGGACCGCTACGTGGCCGTGGTGCATCCCATCA
AGGCGGCCCGCTACCGCCGGCCACCGTGGCCAAGGTAGTAAACCTGGGCGTGTGGGTGCTATCGTGTCT
CGTCATCTGCCCATCGTGGTCTTCTCTCGCACCGGCCAACAGCGACGGCACGGTGGCTTGAACATG
CTCATGCCAGAGCCCGCTCAACGCTGGCTGGTGGGCTTCGTGTTGTACACATTTCTATGGGTTCTCTG
TGCCCGTGGGGGCTATCTGCCTGTGCTACGTGCTCATATTGCTAAGATGCGCATGGTGGCCCTCAAGGC
CGGCTGGCAGCAGCGCAAGCGCTCGGAGCGCAAGATCACCTTAATGGTGATGATGGTGGTATGGTGT
GTCATCTGCTGGATGCCTTCTACGTGGTGCAGCTGGTCAACGTTTGGCTGAGCAGGACGACGCCACGG
TGAGTCAGCTGTGCGTATCCTCGCTATGCCAACAGCTGCGCCAACCCATCCTCTATGGCTTCTCTC
AGACAACCTTCAAGCGCTCTTCCAACGCATCCTATGCCTCAGCTGGATGGACAACGCCGCGGAGGAGCCG
GTTGACTATTACGCCACCGCGCTCAAGAGCCGTGCCTACAGTGTGGAAGACTTCCAACTGAGAACCCTGG
AGTCCGGCGCGTCTTCCGTAATGGCACCTGCACGTCCCGGATCACGACGCTC

ACGCGTACGCGGCCGCTCGAGCAGAACTCATCTCAGAAGAGGATCTGGCAGCAATGATATCCTGGATT
ACAAGGATGACGACGATAAGGTTTAA



[View online >](#)

Protein Sequence: >RC207589 protein sequence
Red=Cloning site Green=Tags(s)

MFPNGTASSPSSPSPGSCGEGGSRGPGAGAADMEEPGRNASQNGTLEGGQSAILISFIYSVVCL
 VGLCGNSMVIYVILRYAKMKTATNIYILNLAIADLLMLVFPFLVTSTLLRHWPFGALLCRLVLSVDAVN
 MFTSIYCLTVLSVDYRVAVVHPKAARYRRPTVAKVVNLGVVWVLSLLVILPIVVF SRTAANS DGT VACNM
 LMPEPAQRWLVGFVLYTFLMGFLLPVGAICLCYVLI IAKMRMVALKAGWQQRKRSEKITLMVMMVVMVF
 VICWMPFYVVQLVNVFAEQDDATVSQLSVILGYANSCANPILYGF LSDNFKR SFQRILCLSWMDNAEEP
 VDYATALKSRAYSVEDFQOPENLESGG VFRNGTCTSRITTL

TRTRPLEQKLISEEDLAANDILDYKDDDDKV

Chromatograms: https://cdn.origene.com/chromatograms/mk6226_h03.zip

Restriction Sites: SgfI-MluI

Cloning Scheme:



ACCN: NM_001049

ORF Size: 1173 bp

OTI Disclaimer: The molecular sequence of this clone aligns with the gene accession number as a point of reference only. However, individual transcript sequences of the same gene can differ through naturally occurring variations (e.g. polymorphisms), each with its own valid existence. This clone is substantially in agreement with the reference, but a complete review of all prevailing variants is recommended prior to use. [More info](#)

OTI Annotation: This clone was engineered to express the complete ORF with an expression tag. Expression varies depending on the nature of the gene.

Components: The ORF clone is ion-exchange column purified and shipped in a 2D barcoded Matrix tube containing 10ug of transfection-ready, dried plasmid DNA (reconstitute with 100 ul of water).

Reconstitution Method:

1. Centrifuge at 5,000xg for 5min.
2. Carefully open the tube and add 100ul of sterile water to dissolve the DNA.
3. Close the tube and incubate for 10 minutes at room temperature.
4. Briefly vortex the tube and then do a quick spin (less than 5000xg) to concentrate the liquid at the bottom.
5. Store the suspended plasmid at -20°C. The DNA is stable for at least one year from date of shipping when stored at -20°C.

Note: Plasmids are not sterile. For experiments where strict sterility is required, filtration with 0.22um filter is required.

RefSeq: [NM_001049.3](#)

RefSeq Size: 4343 bp

RefSeq ORF: 1176 bp

Locus ID: 6751

UniProt ID: [P30872](#)

Cytogenetics: 14q21.1

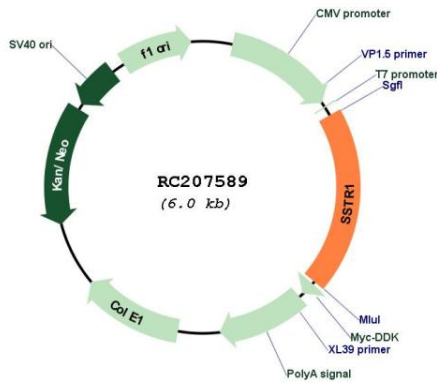
Protein Families: Druggable Genome, GPCR, Transmembrane

Protein Pathways: Neuroactive ligand-receptor interaction

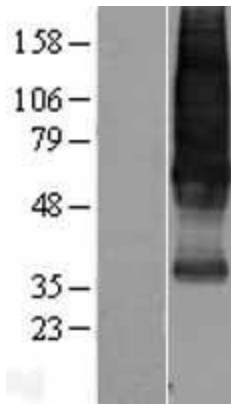
MW: 42.7 kDa

Gene Summary: Somatostatins are peptide hormones that regulate diverse cellular functions such as neurotransmission, cell proliferation, and endocrine signaling as well as inhibiting the release of many hormones and other secretory proteins. Somatostatin has two active forms of 14 and 28 amino acids. The biological effects of somatostatins are mediated by a family of G-protein coupled somatostatin receptors that are expressed in a tissue-specific manner. The protein encoded by this gene is a member of the superfamily of somatostatin receptors having seven transmembrane segments. Somatostatin receptors form homodimers and heterodimers with other members of the superfamily as well as with other G-protein coupled receptors and receptor tyrosine kinases. This somatostatin receptor has greater affinity for somatostatin-14 than -28. [provided by RefSeq, Jul 2012]

Product images:



Circular map for RC207589



Western blot validation of overexpression lysate (Cat# [LY420798]) using anti-DDK antibody (Cat# [TA50011-100]). Left: Cell lysates from untransfected HEK293T cells; Right: Cell lysates from HEK293T cells transfected with RC207589 using transfection reagent MegaTran 2.0 (Cat# [TT210002]).