

## Product datasheet for **RC207583**

### **SPARCL1 (NM\_004684) Human Tagged ORF Clone**

#### **Product data:**

Product Type:	Expression Plasmids
Product Name:	SPARCL1 (NM_004684) Human Tagged ORF Clone
Tag:	Myc-DDK
Symbol:	SPARCL1
Synonyms:	MAST 9; MAST9; PIG33; SC1
Mammalian Cell Selection:	Neomycin
Vector:	pCMV6-Entry (PS100001)
E. coli Selection:	Kanamycin (25 ug/mL)



[View online »](#)

**ORF Nucleotide  
Sequence:**

>RC207583 ORF sequence  
 Red=Cloning site Blue=ORF Green=Tags(s)

TTTTGTAATACGACTCACTATAGGGCGGCCGGAATTCGTCGACTGGATCCGGTACCGAGGAGATCTGCC  
 GCC**CGCATCGCC**

ATGAAGACTGGGCTTTTTTCTATGTCTCTTGGAACTGCAGCTGCAATCCCGACAAATGCAAGATTAT  
 TATCTGATCATTCCAAACCAACTGCTGAAACGGTAGCACCCGACAACACTGCAATCCCCAGTTTAAGGGC  
 TGAAGATGAAGAAAATGAAAAAGAAACAGCAGTATCCACAGAAGACGATTCCCACCATAAGGCTGAAAA  
 TCATCAGTACTAAAGTCAAAAGAGGAAAGCCATGAACAGTCAGCAGAACAGGGCAAGAGTTCTAGCCAAG  
 AGCTGGGATTGAAGGATCAAGAGGACAGTGATGGTGACTTAAGTGTGAATTTGGAGTATGCACCAACTGA  
 AGGTACATTGGACATAAAAGAAGATATGAGTGAGCCTCAGGAGAAAAACTCTCAGAGAACACTGATTTT  
 TTGGCTCTGGTGTAGTTCTTACAGATTCTAACCAACAAGAAAGTATCACAAAGAGAGAGGAAAAACC  
 AAGAACAACCTAGAAATTATTCACATCATCAGTTGAACAGGAGCAGTAAACATAGCCAAGGCCTAAGGGA  
 TCAAGGAAAACCAAGAGCAGGATCCAAATATTTCCAATGGAGAAGAGGAAGAAGAAAAAGGCCAGGTGAA  
 GTTGGTACCCACAATGATAACCAAGAAAAGAAAGACAGAATTGCCAGGGAGCATGCTAACAGCAAGCAGG  
 AGGAAGACAATACCCAATCTGATGATATTTTGGAAAGTCTGATCAACCAACTCAAGTAAGCAAGATGCA  
 GGAGGATGAATTTGATCAGGGTAACCAAGAACAAGAAGATAACTCCAATGCAGAAATGGAAGAGGAAAAAT  
 GCATCGAACGTCAATAAGCACATTAAGAAACTGAATGGCAGAGTCAAGAGGGTAAAACTGGCCTAGAAG  
 CTATCAGCAACCACAAAGAGACAGAAGAAAAGACTGTTTCTGAGGCTCTGCTCATGGAACCTACTGATGA  
 TGGTAATACCACGCCAGAAATCATGGAGTTGATGATGATGGCGATGATGATGGCGATGATGGCGGCACT  
 GATGGCCCCAGGCACAGTGCAAGTGTACTACTTCATCCAAGCCAGGCCTTTCTGGAGCCGAGAGAG  
 TCCAATCCATTGCCTATCACCTCAAAATGAGGAGCAAGAGAAAAAGTACATGAAAATGAAAATATAGG  
 TACCACTGAGCCTGGAGAGCACCAAGAGGCCAAGAAAGCAGAGAACTCATCAAATGAGGAGGAAACGTCA  
 AGTGAAGGCAACATGAGGGTGCATGCTGTGGATTCTTGCATGAGCTTCCAGTGTAAAAGAGGCCACATCT  
 GTAAGGCAGACCAACAGGAAAACTCACTGTGTCTGCCAGGATCCAGTGACTTGTCTCCAACAAAACC  
 CCTTGATCAAGTTTGTGGCACTGACAAATCAGACCTATGCTAGTTCCTGTCTATTCGCTACTAAATGC  
 AGACTGGAGGGGACCAAAAAGGGGCATCAACTCCAGCTGGATTATTTGGAGCCTGCAAATCTATTCCTA  
 CTTGTACGGACTTTGAAGTGATTCAGTTTCTCTACGGATGAGAGACTGGCTCAAGAATATCCTCATGCA  
 GCTTTATGAAGCCAACCTGAACACGCTGGTTATCTAAATGAGAAGCAGAGAAAATAAGTCAAGAAAATT  
 TACCTGGATGAAAAGAGGCTTTTGGCTGGGGACCATCCCATTGACCTTCTTAAAGGACTTTAAGAAAA  
 ACTACCACATGTATGTGTATCCTGTGACTGGCAGTTTAGTGAACCTTGACCAACACCCCTATGGATAGAGT  
 CTTGACACATTCTGAACTTGCTCCTCTGCGAGCATCTCTGGTGCCATGGAACACTGCATAACCCGTTTC  
 TTTGAGGAGTGTGACCCCAACAAGGATAAGCACATCACCTGAAGGAGTGGGGCCACTGCTTTGGAATTA  
 AAGAAGAGGACATAGATGAAAATCTCTTGT

**ACGCGT**ACGCGGCCGCTCGAGCAGAACTCATCTCAGAAGAGGATCTGGCAGCAAATGATATCCTGGATT  
 ACAAGGATGACGACGATAAGGTTTAA

**Protein Sequence:** >RC207583 protein sequence  
Red=Cloning site Green=Tags(s)

```
MKTGLFFLLCLLGTAAAIPNARLLSDHSKPTAETVAPDNTAIPSLRAEDEENEKETAVSTEDDSSHKAEK
SSVLKSKESHEQSAEQGKSSSQELGLKDQEDSDGDL SVNLEYAPTEGLDIKEDMSEPQEKKLSENTDF
LAPGVSSF TDSNQQESI TKREENQE QPRNYSHHQLNRSSKHSQGLRDQGNQE QDPNISNGEEEEKEPGE
VGTHNDRNQERKTELPREHANSKQEEDNTQSDDILEESDQPTQVSKMQEDEFDQGNQE QEDNSNAEMEEEN
ASNVNKHIQETEWQSQEGKTGLEAISNHKETEETVSEALLMEPTDDGNTTPRNHGVDGDDGDDGDDGGT
DGPRHSASDDYFIPSAFLEAERAQSIAYHLKIEEQREKVHENENIGTTEPGEHQEAKKAENSSNEEETS
SEGNMRVHAVDSCMSFQCKRGHICKADQQGKPHVCQDPVTCPPTKPLDQVCGTDNQTYASSCHLFATKC
RLEGTKKGHQLLDYFGACKSIPTCTDFEVIQFPLRMRDWLKNILMQLYEANSEHAGYLNEKQRNKVKKI
YLDEKRLLAGDHPIDLRLDFKKNYHMYVYPVHWQFSELDQHPMDRVLTHSELAPLRASLVPMHCITRF
FEEDPNKDKHITLKEWGHCFGIKEEDIDENLLF
```

TRTRPLEQKLISEEDLAANDILDYKDDDDKV

**Chromatograms:** [https://cdn.origene.com/chromatograms/mk6518\\_c01.zip](https://cdn.origene.com/chromatograms/mk6518_c01.zip)

**Restriction Sites:** SgfI-MluI

**Cloning Scheme:**



**ACCN:** NM\_004684

**ORF Size:** 1992 bp

**OTI Disclaimer:** The molecular sequence of this clone aligns with the gene accession number as a point of reference only. However, individual transcript sequences of the same gene can differ through naturally occurring variations (e.g. polymorphisms), each with its own valid existence. This clone is substantially in agreement with the reference, but a complete review of all prevailing variants is recommended prior to use. [More info](#)

**OTI Annotation:** This clone was engineered to express the complete ORF with an expression tag. Expression varies depending on the nature of the gene.

**Components:** The ORF clone is ion-exchange column purified and shipped in a 2D barcoded Matrix tube containing 10ug of transfection-ready, dried plasmid DNA (reconstitute with 100 ul of water).

**Reconstitution Method:**

1. Centrifuge at 5,000xg for 5min.
2. Carefully open the tube and add 100ul of sterile water to dissolve the DNA.
3. Close the tube and incubate for 10 minutes at room temperature.
4. Briefly vortex the tube and then do a quick spin (less than 5000xg) to concentrate the liquid at the bottom.
5. Store the suspended plasmid at -20°C. The DNA is stable for at least one year from date of shipping when stored at -20°C.

**RefSeq:** [NM\\_004684.5](#)

**RefSeq Size:** 2910 bp

**RefSeq ORF:** 1995 bp

**Locus ID:** 8404

**UniProt ID:** [Q14515](#)

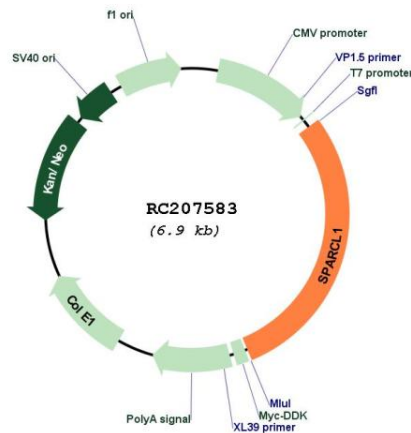
**Cytogenetics:** 4q22.1

**Domains:** kazal, FOLN

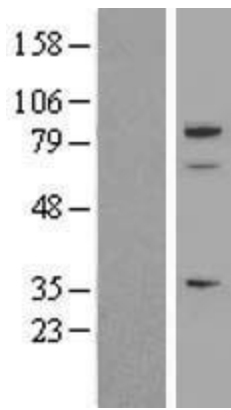
**Protein Families:** Druggable Genome, Secreted Protein

**MW:** 75.2 kDa

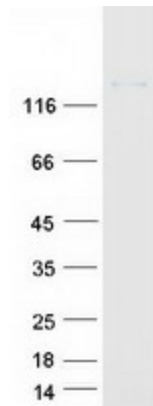
**Product images:**



Circular map for RC207583



Western blot validation of overexpression lysate (Cat# [LY426947]) using anti-DDK antibody (Cat# [TA50011-100]). Left: Cell lysates from untransfected HEK293T cells; Right: Cell lysates from HEK293T cells transfected with [RC226078] using transfection reagent MegaTran 2.0 (Cat# [TT210002]).



Coomassie blue staining of purified SPARCL1 protein (Cat# [TP307583]). The protein was produced from HEK293T cells transfected with SPARCL1 cDNA clone (Cat# RC207583) using MegaTran 2.0 (Cat# [TT210002]).