

Product datasheet for **RC207579**

SLC22A6 (NM_153276) Human Tagged ORF Clone

Product data:

Product Type:	Expression Plasmids
Product Name:	SLC22A6 (NM_153276) Human Tagged ORF Clone
Tag:	Myc-DDK
Symbol:	SLC22A6
Synonyms:	HOAT1; OAT1; PAHT; ROAT1
Mammalian Cell Selection:	Neomycin
Vector:	pCMV6-Entry (PS100001)
E. coli Selection:	Kanamycin (25 ug/mL)



[View online »](#)

ORF Nucleotide Sequence:

>RC207579 ORF sequence
 Red=Cloning site Blue=ORF Green=Tags(s)

TTTTGTAATACGACTCACTATAGGGCGGCCGGGAATTCGTCGACTGGATCCGGTACCGAGGAGATCTGCC
 GCC**CGGATCGCC**

ATGGCCTTTAATGACCTCCTGCAGCAGGTGGGGGTGTCGGCCGCTTCCAGCAGATCCAGGTACCCTGG
 TGGTCTCCCCCTGCTCCTGATGGCTTCTCACAACACCCTGCAGAACTTCACTGCTGCCATCCCTACCCA
 CCACTGCCGCCCGCTGCCGATGCCAACCTCAGCAAGAACGGGGGCTGGAGGTCTGGCTGCCCCGGGAC
 AGGCAGGGGCAGCCTGAGTCTGCTCCGCTTACCTCCCGCAGTGGGACTGCCCTTTCTCAATGGCA
 CAGAAGCCAATGGCACAGGGGCCACAGAGCCCTGCACCGATGGCTGGATCTATGACAACAGCACCTTCCC
 ATCTACCATCGTACTGAGTGGGACCTTGTGTGCTCTCACAGGGCCCTACGCCAGCTGGCCAGTCTTGT
 TACATGGTGGGGTGTGCTCGGAGCCATGGTGTTCGGCTACCTTGACAGCAGGCTAGGCCGCCGGAAGG
 TACTCATCTTGAACACCTGCAGACAGCTGTGTCAGGGACCTGCGCAGCCTTCGCACCCAATTCCCAT
 CTACTGCGCTTCCGGCTCCTCTCGGGCATGGCTCTGGCTGGCATCTCCCTCACTGCATGACACTGAAT
 GTGGAGTGGATGCCATTACACACGGGCTGCGTGGGCACCTTGATTGGCTATGTCTACAGCCTGGGCC
 AGTTCTCCTGGCTGGTGTGGCCTACGCTGTGCCCACTGGCGCCACCTGCAGCTACTGGTCTCTGCGCC
 TTTTTTGCCTTCTTCACTACTCCTGGTCTTCAATTGAGTCGGCCCGCTGGCACTCCTCCTCCGGGAGG
 CTGGACCTCACCTGAGGGCCCTGCAGAGAGTCGCCCGGATCAATGGGAAGCGGGAAGAAGGAGCCAAAT
 TGAGTATGGAGGTACTCCGGGCCAGTCTGCAGAAGGAGCTGACCATGGGCAAAGGCCAGGCATCGGCCAT
 GGAGCTGCTGCGTGGCCACCTCCGCCACCTTCTCCTGCTCTCCATGCTGTGGTTGCCACTAGC
 TTTGCATACTATGGGCTGGTCACTGGACCTGCAGGGCTTGGAGTCAGCATCTACCTAATCCAGGTGATCT
 TTGGTGTGGACCTGCTGCTGCAAGCTTGTGGCTTCTTGTCACTCACTCCCTGGTGGCCGCGCTGC
 CCAGATGGCTGCACTGCTGCTGGCAGGCATCTGCATCCTGCTCAATGGGGTATACCCAGGACCGTCC
 ATTGTCCGAACCTCTCTTGTGCTGCTGGGAAGGGTTGTCTGGCTGCCTCCTTCACTGCATCTTCTGT
 AACTGGGAACCTGTATCCCAATGATCCGGCAGACAGGCATGGGAATGGGCAGCACCATGGCCGAGT
 GGGCAGCATCGTGGCCACTGGTGGAGCATGACTGCCGAGCTCTACCCCTCCATGCCTCTTCTATCTAC
 GGTGCTGTTCTGTGGCCGCCAGCGCTGTACTGTCTCTGCCAGAGACCCTGGCCAGCCACTGCCAG
 ACACGGTGCAGGACCTGGAGAGCAGGAAAGGAAACAGACGCGACAGCAACAAGAGCACCAGAAGTATAT
 GGTCCCACTGCAGGCCTCAGCACAAGAGAAGAATGGACTC

ACGCGTACGCGGCCGCTCGAGCAGAAACTCATCTCAGAAGAGGATCTGGCAGCAAATGATATCCTGGATT
 ACAAGGATGACGACGATAAGGTTTAA

Protein Sequence:

>RC207579 protein sequence
 Red=Cloning site Green=Tags(s)

MAFNLLQQVGGVGRFQQIQVTLVVLPLLLMASHNTLQNFTAAIPTHHRPPADANLSKNGGLEVWLPRD
 RQGQPECLRFTSPQWGLPFLNGTEANGTGATEPCTDGWIYDNSTFPSTIVTEWDLVCSHRALRQLAQSL
 YMVGVLLGAMVFGYLAADRLGRRKVLILNYLQTAVSGTCAAFAPNFPIYCAFRLLSGMALAGISLNCMTLN
 VEWMPIHTRACVGTIGYVYSLGQFLLAGVAVAVPHWRHLQLLSAPFFAFFIYSWFFIESARWHSSGR
 LDLTLRALQRVARINGKREEGAKLSMEVLRASLQKELTMGKGQASAMELLRCPTLRHLFLCLSMWFATS
 FAYYGLVMDLQGFVSIYLIQVIFGAVDLPKLVGFLVINSLRGRRPAQMAALLLAGICILLNGVIPQDQS
 IVRTSLAVLGGCLAASFNCIFLYTGELYPTMIRQTMGMGSTMARVGSIVSPLVSMTAELYPSMPLFIY
 GAVPVAASAVTVLLPETLGPPLPDTVQDLESRKQKQTRQQQEHQKYMVPLQASAQEKNGL

TRTRPLEQKLISEEDLAANDILDYKDDDDKV

Chromatograms:

https://cdn.origene.com/chromatograms/mk6334_a12.zip

Restriction Sites:

Sgfl-Mlul

Cloning Scheme:



ACCN: NM_153276

ORF Size: 1650 bp

OTI Disclaimer: Due to the inherent nature of this plasmid, standard methods to replicate additional amounts of DNA in E. coli are highly likely to result in mutations and/or rearrangements. Therefore, OriGene does not guarantee the capability to replicate this plasmid DNA. Additional amounts of DNA can be purchased from OriGene with batch-specific, full-sequence verification at a reduced cost. Please contact our customer care team at custsupport@origene.com or by calling 301.340.3188 option 3 for pricing and delivery.

The molecular sequence of this clone aligns with the gene accession number as a point of reference only. However, individual transcript sequences of the same gene can differ through naturally occurring variations (e.g. polymorphisms), each with its own valid existence. This clone is substantially in agreement with the reference, but a complete review of all prevailing variants is recommended prior to use. [More info](#)

OTI Annotation: This clone was engineered to express the complete ORF with an expression tag. Expression varies depending on the nature of the gene.

Components: The ORF clone is ion-exchange column purified and shipped in a 2D barcoded Matrix tube containing 10ug of transfection-ready, dried plasmid DNA (reconstitute with 100 ul of water).

- Reconstitution Method:
1. Centrifuge at 5,000xg for 5min.
 2. Carefully open the tube and add 100ul of sterile water to dissolve the DNA.
 3. Close the tube and incubate for 10 minutes at room temperature.
 4. Briefly vortex the tube and then do a quick spin (less than 5000xg) to concentrate the liquid at the bottom.
 5. Store the suspended plasmid at -20°C. The DNA is stable for at least one year from date of shipping when stored at -20°C.

Note: Plasmids are not sterile. For experiments where strict sterility is required, filtration with 0.22um filter is required.

RefSeq: [NM_153276.3](#)

RefSeq Size: 2220 bp

RefSeq ORF: 1653 bp

Locus ID: 9356

UniProt ID: [Q4U2R8](#)

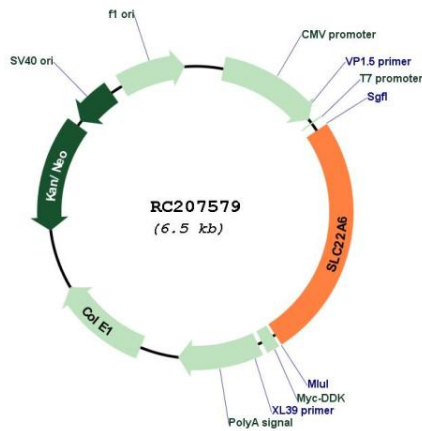
Cytogenetics: 11q12.3

Protein Families: Transmembrane

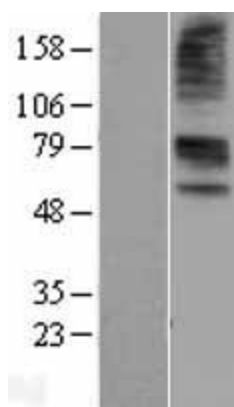
MW: 60.3 kDa

Gene Summary: The protein encoded by this gene is involved in the sodium-dependent transport and excretion of organic anions, some of which are potentially toxic. The encoded protein is an integral membrane protein and may be localized to the basolateral membrane. Four transcript variants encoding four different isoforms have been found for this gene. [provided by RefSeq, Jul 2008]

Product images:



Circular map for RC207579



Western blot validation of overexpression lysate (Cat# [LY407098]) using anti-DDK antibody (Cat# [TA50011-100]). Left: Cell lysates from untransfected HEK293T cells; Right: Cell lysates from HEK293T cells transfected with RC207579 using transfection reagent MegaTran 2.0 (Cat# [TT210002]).