

## Product datasheet for RC207578

### SARA (ZFYVE9) (NM\_004799) Human Tagged ORF Clone

#### Product data:

Product Type:	Expression Plasmids
Product Name:	SARA (ZFYVE9) (NM_004799) Human Tagged ORF Clone
Tag:	Myc-DDK
Symbol:	SARA
Synonyms:	MADHIP; NSP; PPP1R173; SARA; SMADIP
Mammalian Cell Selection:	Neomycin
Vector:	pCMV6-Entry (PS100001)
E. coli Selection:	Kanamycin (25 ug/mL)
ORF Nucleotide Sequence:	>RC207578 ORF sequence Red=Cloning site Blue=ORF Green=Tags(s)

TTTTGTAATACGACTCACTATAGGGCGGCCGGAATTCGTCGACTGGATCCGGTACCGAGGAGATCTGCC  
GCCCGGATCGCC

ATGGAGAATTACTCCAAGCAGAAGCTTACAACCTGGACAAGGTGTTAGATGAATTTGAACAAAACGAAG  
ATGAAACAGTTTCTTCTACTTTATTGGATACAAAGTGAATAAGATTCTAGATCCCCCTTCTCACC GGCT  
GTCATTTAACCTACTTTGGCCAGTGTGAATGAATCTGCAGTTTCTAATGAGTCAACAACCACAACCTGAAA  
GTCTTCTCCCTGGCTCATTGAGTCCCCTGACCACAGAGGAAGAGGATCACTGTGCTAATGGACAGGACT  
GTAATCTAAATCCAGAGATTGCCACAATGTGGATTGATGAAAATGCTGTTGCAGAAGACCAGTTAATTAA  
GAGAACTATAGTTGGGATGATCAATGCAGTGTGTTGAAGTGGGAGAGAAGAAATGTGGAAACCTGGCT  
TGTCTGCCAGATGAGAAGAATGTTCTTGTGTAGCCGTCATGCATAACTGTGATAAAAAGGACATTACAAA  
ACGATTTACAGGATTGTAATAATTATAATAGTCAATCCCTTATGGATGCTTTTAGCTGTTCACTGGATAA  
TGAAAACAGACAACTGATCAATTTAGTTTTAGTATAAATGAGTCCACTGAAAAAGATAGAATTCAGAG  
AAACAAATGGATCCATTGAATAGACCGAAAACAGAGGGGAGATCTGTTAACCATCTGTGCTCTACTTCAT  
CTGATAGTCTAGCCAGTGTCTGTTCCCTTCCAAATTAAGGATGACGGAAGTATAGGTAGAGACCCCTC  
CATGTCTGCGATTACAAGTTTAAACGTTGATTTCAGTAATCTCATCCCAGGAACAGATGGATGTCCTGCT  
GTTAAAAAGCAAGAGAACTATATACCAGATGAGGACCTCACTGGCAAAATCAGTCTCCTAGGACAGATC  
TAGGGAGTCCAAATTCCTTTCCACATGAGTGAGGGGATTTTGATGAAAAAAGAGCCAGCAGAGGAGAG  
CACCAGTGAAGAATCCCTCCGGTCTGGTTTACCTTTGCTTCTCAAACCAGACATGCCTAATGGGTCTGGA  
AGGAATAATGACTGTGAACGGTGTTCAGATTGCCTTGTGCCTAATGAAGTTAGGGCTGATGAAAAAGAA  
GTTATGAACATGAAGAACTCTTGGCACTACAGAATTCCTTAATATGACAGAGCATTCTCTGAATCTCA  
GGACATGACTAATTGGAAGTTGACTAACTAAATGAGATGAATGATAGCCAAGTAAACGAAGAAAAGGAA  
AAGTTTCTACAGATTAGTCAGCCTGAGGACACTAATGGTATAGTGGAGGACAGTGTGTTGGATTGGCAG  
ATGCAGGCTAGATTTAAAGGAACTTGCATTAGTAAAAGTGAAGAATGTGATTTCTCCACTGTTATAGA  
CACACCAGCAGCAAATTATCTATCTAATGTTGTGATTCTATGGAATGCAAGACCCAGGTGTTCTTTT



[View online >](#)

GTTCCAAAGACTTTACCCTCAAAGAAGATTTCAGTAACAGAAGAAAAAGAAATAGAGGAAAAGCAAGTCAG  
AATGCTACTCAAATATTTATGAACAGAGAGGAAATGAGGCCACAGAAGGGAGTGGACTACTTTTAAACAG  
CACTGGTGACCTAATGAAGAAAAATTTTACATAATTTCTGTAGTCAAGTTCCATCAGTGCTTGGGCAA  
TCTTCCCCAAGGTAGTAGCAAGCCTGCCATCTATCAGTGTTCTTTTGGTGGTGAAGACCCAAGCAAC  
CTTCTAATCTTAACTTCAAATTCAAAAGCCATTATCAGACCATTACAAAATGACTTTCCTGCAAAACAG  
TGGAAATAACTAAAAATAAAATGATATTCTGGGAAAACAAAATAGGGGAAAACCTCAGCAACCAAT  
GTATGCAGTCCATCTTTGGGAAACATCTAATGTGATACAAAATGGGGAACATTTAGAAAAGTTATGAGG  
CTGAGATCTCCACTAGACCATGCCTTGCAATTAGCTCCAGATAGCCAGATAATGATCTCAGAGCTGGTCA  
GTTTGGAAATTTCTGCCAGAAAGCCATTCACCACCTCTGGGTGAGGTGGCTCCAGTATGGGTACCGGATTCT  
CAGGCTCCAAATGTCATGAAATGTGAAGCCAGGTTTACATTACCCAAAAGGAGGCATCACTGCAGAGCAT  
GTGGGAAGGTTTTCTGTGCTTCTGCTGTAGCCTGAAATGTAACTGTTATACATGGACAGAAAAGGAAGC  
TAGAGTGTGTGAATCTGCCATTCAGTGCTAATGAATGCTCAAGCCTGGGAGAACATGATGAGTGCCTCA  
AGCCAGAGCCCTAACCTAACATCCTGCTGAATACTGTTCTACTATCCCTCCCTGCAGCAAGCTCAGG  
CCTCAGGAGCTCTGAGCTCTCCACCTCCACTGTGATGGTACCTGTGGGAGTTTTAAAGCACCTGGAGC  
AGAAGTGGCTCAGCCAGAGAGCAGAGGGCAGTTGGTTTGTGATGGGATCTTGCCCAATGGAGAAGTT  
GCTGATGCAGCCAAATTAACAATGAATGGAACCTCCTCTGCAGGAACCCCTGGCTGTGTCACACGACCAG  
TCAAGCCAGTAACCTACCAGTCTCTACCAGCAGAGACGGATATTTGTCTATTCTCTGGGAGTATAACTCA  
GGTTGGAAGTCTGTTGGAAGTGAATGAATCTTATTCTGAAGATGGCCTTCTCCCATCTCATCTCC  
ACTGGTGTAAAAGGAGACTATGCTGTGGAAGAGAAACCATCACAGATTTTCAGTAATGCAGCAGTTGGAGG  
ATGGTGGCCCTGACCCACTTGTATTTGTTTTAAATGCAATTTGTTGTCAATGGTTAAAATTGTAATTA  
TGTGAACAGGAAGTGTGGTGTTCACAACCAAGGGAATGCATGCAGTGGGTGAGTCTGAGATAGTCATT  
CTTCTACAGTGTTCACCGATGAAAAGTGTTCGCAAAGGATATCTTTAATCACTTTGTGCAGCTTTATC  
GGGATGCTCTGGCAGGGAATGTGGTGAAGCACTGGGACATTCCTTCTCAGTCAAAGTTTTCTTGGCAG  
TAAAGAACATGGTGGATTCTTATATGTGACATCTACCTACCAGTCACTGCAAGACCTAGTACTCCCAACC  
CCACCTTACTTGTGGATTCTTATCCAGAAATGGGAACTCCTTGGGCTAAAAGTATTTCTATCCGTC  
TGATGTTGAGACTTGAGCTGAATATCGACTTTATCCATGCCACTATTCAGTGTGAGATTTGGAAGCC  
ATTGTTTGGAGAGACGGGCATACCATCATGAATCTTCTTGCAGACTTCAGAAAATACCAGTATACCTTG  
CCAGTAGTTCAAGGTTTGGTGGTTGATATGGAAGTTCGGAAGACTAGCATCAAAATCCCAGCAACAGAT  
ACAATGAGATGATGAAAGCCATGAACAAGTCCAATGAGCATGCTCTGGCAGGAGGTGCTGCTTCAATGA  
AAAGGCAGACTCTCATCTTGTGTGTACAGAATGATGATGGAAGTATCAGACCCAGGCTATCAGTATT  
CACAATCAGCCAGAAAAGTGAAGTGGTCCAGTTCTTTGTGTTCAAGTGGCGCTCTGAAATCCTCTCTG  
GATACCTTGCCAAGTCCAGTATTGTGGAAGATGGTGTATGGTCCAGATTACTGCAGAGAACATGGATTC  
CTTGAGGCAGGCACTGCGAGAGATGAAGGACTTACCATCACCTGTGGGAAGGCGGACGCGGAGGAACCC  
CAGGAGCACATCCACATCCAGTGGTGGATGATGACAAGAAGCTTAGCAAGGGTGTGCTAAGTCTATAG  
ATGGGAAGTCCATGGAGACTATAACAAATGTGAAGATAATCCATGGATCAGAATAAAAGCAATGGAAA  
AGTAATCAGATGGACAGAGGTGTTTTCTAGAAAACGATGACCAGCACAAATGCCTCAGTATCCTGCA  
GATCACAGTAGATTGACTGAGCATGTTGCCAAAGCTTTTTGCCTTGCTCTCTGCTCACCTGAACTTC  
TGAAGGAAGATGGAATGACCAAACTGGGACTACGTGTGACACTTACTCAGATCAGGTTGGCTATCAAGC  
AGGGAGCAATGGCCAGCCCTTCCCTCGCAGTACATGAATGATCTGGACAGCGCCTTGGTGCCGGTGATC  
CATGGAGGGGCCCTGCCAGCTTAGTGAGGGCCCCGTTGTGATGGAACCTCATCTTTATATTCTGAAAAACA  
TCGTA

ACGCGTACGCGGCCGCTCGAGCAGAACTCATCTCAGAAGAGGATCTGGCAGCAATGATATCCTGGATT  
ACAAGGATGACGACGATAAGGTTTAA

Protein Sequence: >RC207578 protein sequence  
 Red=Cloning site Green=Tags(s)

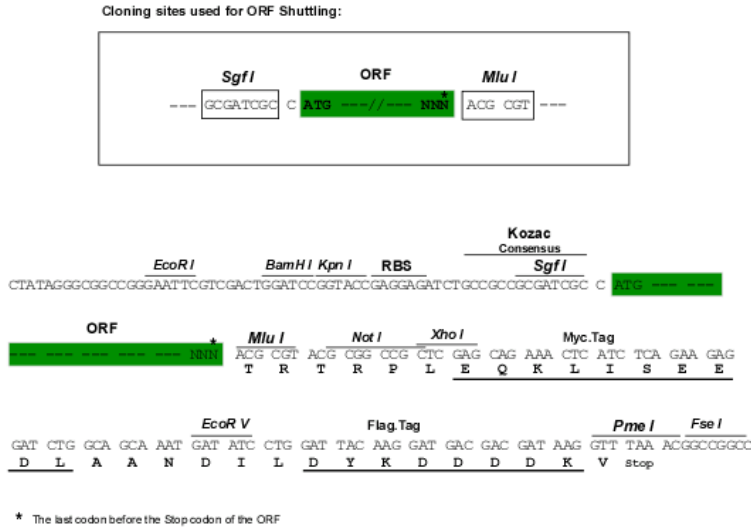
MENYFQAEAYNLDKVLDEFEQNEDETVSSTLLDTKWNLDPSPHRLSFNPTLASVNESAVSNESQPQLK  
 VFLSLAHSAPLTTTEEDHCANGQDCNLNPEIATMWIDENAVAEDQLIKRNYSWDDQCSAVEVGEKKCGNLA  
 CLPDEKNVLVVAVMHNC DKRTLQNDLQDCNNYNSQSLMDAFSCSLDNENRQTDQF SFSINESTEKMNSE  
 KQMDPLNRPKTEGRSVNHL CPTSSDSLAVCSQSPSLKDDGSI GRDPSMSAITSLTVDSVSISSQGTGCPA  
 VKKQENYIPDEDLTGKISSPRTL GSPNSFSHMSEGILMKKEPAEESTTEESLRSGLPLLLKPDMPNGSG  
 RNNDCERCSDCLVPNEVRADENEGYEHEETLGTTEFLNMTTEHSESQDMTNWKLTKLNEMNDSQVNEEKE  
 KFLQISQPEDTNGDSGGQCVGLADAGLDLKGTCISESEECDFSTVIDTPAANYLSNGCDSYGMQDPGVSF  
 VPKTLPSKEDSVTEEKEIEESKSECYSNIYEQRGNEATEGSGLLLNSTGDLMKKNYLHNFCSQVPSVLGQ  
 SSPKVVASLPSISVPPFGGARPQPSNLKLIQPKPLSDHLQNDFFPANSGNNTKNKNDILGKAKLGENSATN  
 VCSPSLGNISNVDNNGEHELESYAEI STRPCLALAPDSPDNDLRAGQFGISARKPFITLGEVAPVWVPDS  
 QAPNCMKCEARFTFKRRHHCRACGKVFCASSCSLKCKLLYMDRKEARVCVICHVLMNAQAWENMMSAS  
 SQSPNPNPAEYCSTIPPLQQAQASGALSPPPTVMVPGV LKHPGAEVAQPREQRRVWFADGILPNGEV  
 ADAAKLTMNGTSSAGTLAVSHDPVKPVTT SPLPAETDICLFGSITQVGSVPVGSAMNLIPEGLPPIILIS  
 TGVKGDYAVEEKPSQISVMQQLEDGGPDPLVFVLANLLSMVKIVNYVNRKWCWFTTKGMHAVGQSEIVI  
 LLQCLPDEKCLPKDIFNHVQLYRDALAGNVVSNLGHFFFQSFLGSKEHGGFLYVTSTYQSLQDLVLP  
 PPYLFGLIQKWETPWAKVFP IRLMLRLGAEYRL YPCPLFSVFRKPLFGETGHTIMNLLADFRNYQYTL  
 PVVQGLVVDMEVRKTSIKIPSNRYNEMMKAMNKSNEHVL AGGACFNEKADSHLVCVQNDGNYQTQAISI  
 HNQPRKVTGASFFVFSGALKSSSGYLAKSSIVEDGMVQITAE NMDSL RQALREMKDFTITCGKADAEPP  
 QEHIHIQWVDDDKNVSKGVVSPIDGKSMETITNVKIFHGSEYKANGKVIRWTEVFLENDQHNCLSDPA  
 DHSRLTEHVAKAFCLALCPHLKLLKEDGMTKGLRVTL DSDQVGVYQAGSNGQPLPSQYMNLDLSALVPVI  
 HGGACQLSEGPVVMELIFYILENIV

TRTRPLEQKLISEEDLAANDILDYKDDDDKV

Chromatograms: [https://cdn.origene.com/chromatograms/mk6262\\_b07.zip](https://cdn.origene.com/chromatograms/mk6262_b07.zip)

Restriction Sites: SgfI-MluI

Cloning Scheme:

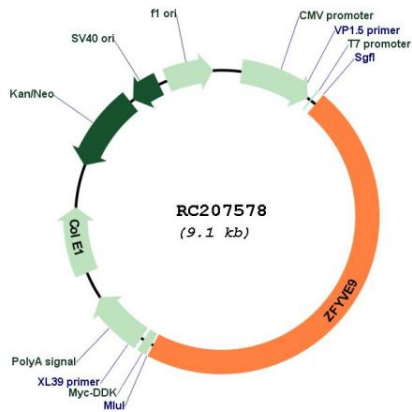


ACCN: NM\_004799

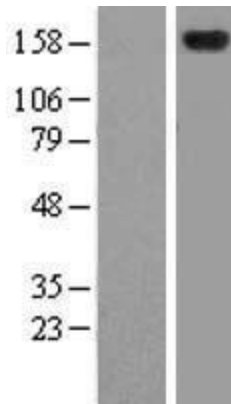
ORF Size: 4275 bp

<b>OTI Disclaimer:</b>	The molecular sequence of this clone aligns with the gene accession number as a point of reference only. However, individual transcript sequences of the same gene can differ through naturally occurring variations (e.g. polymorphisms), each with its own valid existence. This clone is substantially in agreement with the reference, but a complete review of all prevailing variants is recommended prior to use. <a href="#">More info</a>
<b>OTI Annotation:</b>	This clone was engineered to express the complete ORF with an expression tag. Expression varies depending on the nature of the gene.
<b>Components:</b>	The ORF clone is ion-exchange column purified and shipped in a 2D barcoded Matrix tube containing 10ug of transfection-ready, dried plasmid DNA (reconstitute with 100 ul of water).
<b>Reconstitution Method:</b>	<ol style="list-style-type: none"><li>1. Centrifuge at 5,000xg for 5min.</li><li>2. Carefully open the tube and add 100ul of sterile water to dissolve the DNA.</li><li>3. Close the tube and incubate for 10 minutes at room temperature.</li><li>4. Briefly vortex the tube and then do a quick spin (less than 5000xg) to concentrate the liquid at the bottom.</li><li>5. Store the suspended plasmid at -20°C. The DNA is stable for at least one year from date of shipping when stored at -20°C.</li></ol>
<b>RefSeq:</b>	<a href="#">NM_004799.3</a>
<b>RefSeq Size:</b>	5210 bp
<b>RefSeq ORF:</b>	4278 bp
<b>Locus ID:</b>	9372
<b>UniProt ID:</b>	<a href="#">O95405</a>
<b>Cytogenetics:</b>	1p32.3
<b>Domains:</b>	FYVE
<b>Protein Pathways:</b>	TGF-beta signaling pathway
<b>MW:</b>	156.4 kDa
<b>Gene Summary:</b>	This gene encodes a double zinc finger motif-containing protein that participates in the transforming growth factor-beta (TGFB) signalling pathway. The encoded protein interacts directly with SMAD2 and SMAD3, and recruits SMAD2 to the TGFB receptor. There are multiple pseudogenes for this gene on chromosomes 2, 15, and X. Alternative splicing results in multiple transcript variants. [provided by RefSeq, Mar 2013]

Product images:



Circular map for RC207578



Western blot validation of overexpression lysate (Cat# [LY417734]) using anti-DDK antibody (Cat# [TA50011-100]). Left: Cell lysates from untransfected HEK293T cells; Right: Cell lysates from HEK293T cells transfected with RC207578 using transfection reagent MegaTran 2.0 (Cat# [TT210002]).