

Product datasheet for RC207573

GPR3 (NM_005281) Human Tagged ORF Clone

Product data:

Product Type:	Expression Plasmids
Product Name:	GPR3 (NM_005281) Human Tagged ORF Clone
Tag:	Myc-DDK
Symbol:	GPR3
Synonyms:	ACCA
Mammalian Cell Selection:	Neomycin
Vector:	pCMV6-Entry (PS100001)
E. coli Selection:	Kanamycin (25 ug/mL)
ORF Nucleotide Sequence:	>RC207573 ORF sequence Red=Cloning site Blue=ORF Green=Tags(s)

TTTTGTAATACGACTCACTATAGGGCGCCGGGAATTCGTCGACTGGATCCGGTACCGAGGAGATCTGCC
GCC**CGATCGCC**

ATGATGTGGGGTGCAGGCAGCCCTCTGGCCTGGCTCTCAGCTGGCTCAGGCAACGTGAATGTAAGCAGCG
TGGGCCAGCAGAGGGGCCACAGGTCCAGCCGACCCTGCCCTCGCCTAAGGCCTGGGATGTGGTGCT
CTGCATCTCAGGCACCCTGGTGTCTGCGAGAATGCGCTAGTGGTGGCCATCATCGTGGGCACTCCTGCC
TTCCGTGCCCCCATGTTCTGCTGGTGGCAGCCTGGCCGTGGCAGACCTGCTGGCAGGCCTGGGCTGG
TCCTGCACCTTTGCTGCTGCTTCTGCATCGGCTCAGCGGAGATGAGCCTGGTGTGGTTGGCGTGTGGC
AATGGCCTTTACCGCCAGCATCGGCAGTCTACTGGCCATCACTGTGACCCTACCTTTCTCTGTACAAT
GCCCTCACCTACTATTCAGAGACAACAGTGACACGGACCTATGTGATGCTGGCCTTAGTGTGGGAGGTG
CCCTGGGCTGGGGCTGCTGCCTGTGCTGGCCTGGAAGTGCCTGGATGGCCTGACCACATGTGGCGTGGT
TTATCCACTCTCCAAGAACCATCTGGTAGTTCTGGCCATTGCCTTCTTATGGTGTGGTGGCATTGCTG
CAGCTCTACGCCAAATCTGCCGCATCGTCTGCCGCCATGCCAGCAGATTGCCCTCAGCGGCACCTGC
TGCTGCTCCACTATGTGGCCACCCGAAGGGCATTGCCCACTGGCCGTGGTGTGGAGCCTTTGC
CGCCTGCTGGTTGCCCTCACTGTCTACTGCCTGCTGGGTGATGCCCACTCTCCACCTCTACACCTAT
CTTACCTTGCTCCCTGCCACCTACAACCTCATGATCAACCCTATCATCTACGCCCTCCGCAACCAGGATG
TGCAGAAAGTGTGGGCTGTCTGCTGCTGCTTCTTCCAAGATCCCCTCCGATCCCGCTCCCC
CAGTGATGTC

ACGCGTACGCGGCCGCTCGAGCAGAACTCATCTCAGAAGAGGATCTGGCAGCAAATGATATCCTGGATT
ACAAGGATGACGACGATAAGGTTTAA



[View online »](#)

Protein Sequence: >RC207573 protein sequence
Red=Cloning site Green=Tags(s)

MMWGAGSPLAWLSAGSGNVNVSSVGPAGPTGPAAPLPSPKAWDVVLCISGTLVSCENALVVAIIVGTPA
 FRAPMFLLVGSLAVADLLAGLGLVLHFAAVFCIGSAEMSLVVLVGLVMAFTASIGSLLAITVDRYLSLYN
 ALTYSETTVTRTYVMLALVWGGALGLLLPVLAWNCLDGLTTGCVVYPLSKNHLVVLAIFFMVFIML
 QLYAQICRIVCRHAQQIALQRHLLPASHYVATRKGIATLAVVLGAF AACWLPFTVYCLLGDHSPPLYTY
 LTLLPATYNSMINPIIYAFRNQDVQKVLWAVCCCCSSSKIPFRSRSPSDV

TRTRPLEQKLISEEDLAANDILDYKDDDDKV

Chromatograms: https://cdn.origene.com/chromatograms/mk6019_d07.zip

Restriction Sites: SgfI-MluI

Cloning Scheme:



ACCN: NM_005281

ORF Size: 990 bp

OTI Disclaimer: The molecular sequence of this clone aligns with the gene accession number as a point of reference only. However, individual transcript sequences of the same gene can differ through naturally occurring variations (e.g. polymorphisms), each with its own valid existence. This clone is substantially in agreement with the reference, but a complete review of all prevailing variants is recommended prior to use. [More info](#)

OTI Annotation: This clone was engineered to express the complete ORF with an expression tag. Expression varies depending on the nature of the gene.

Components: The ORF clone is ion-exchange column purified and shipped in a 2D barcoded Matrix tube containing 10ug of transfection-ready, dried plasmid DNA (reconstitute with 100 ul of water).

Reconstitution Method:

1. Centrifuge at 5,000xg for 5min.
2. Carefully open the tube and add 100ul of sterile water to dissolve the DNA.
3. Close the tube and incubate for 10 minutes at room temperature.
4. Briefly vortex the tube and then do a quick spin (less than 5000xg) to concentrate the liquid at the bottom.
5. Store the suspended plasmid at -20°C. The DNA is stable for at least one year from date of shipping when stored at -20°C.

RefSeq: [NM_005281.4](#)

RefSeq Size: 2149 bp

RefSeq ORF: 993 bp

Locus ID: 2827

UniProt ID: [P46089](#)

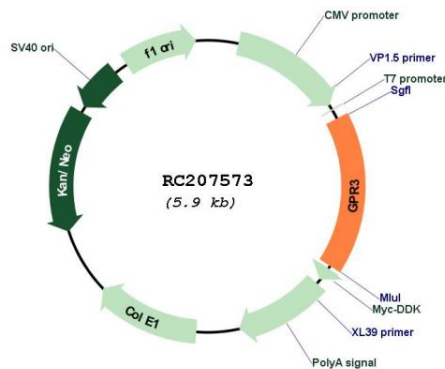
Cytogenetics: 1p36.11

Protein Families: Druggable Genome, GPCR, Transmembrane

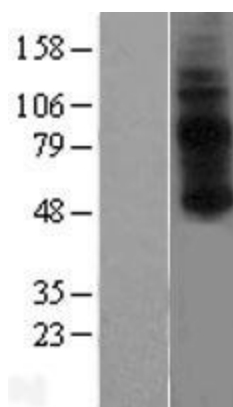
MW: 35 kDa

Gene Summary: This gene is a member of the G protein-coupled receptor family and is found in the cell membrane. G protein-coupled receptors, characterized by a seven transmembrane domain motif, are involved in translating outside signals into G protein mediated intracellular effects. The encoded protein activates adenylate cyclase and modulates amyloid-beta production in a mouse model, suggesting that it may play a role in Alzheimer's disease. [provided by RefSeq, Oct 2012]

Product images:



Circular map for RC207573



Western blot validation of overexpression lysate (Cat# [LY417404]) using anti-DDK antibody (Cat# [TA50011-100]). Left: Cell lysates from untransfected HEK293T cells; Right: Cell lysates from HEK293T cells transfected with RC207573 using transfection reagent MegaTran 2.0 (Cat# [TT210002]).