

Product datasheet for RC207566

CEPT1 (NM_001007794) Human Tagged ORF Clone

Product data:

Product Type:	Expression Plasmids
Product Name:	CEPT1 (NM_001007794) Human Tagged ORF Clone
Tag:	Myc-DDK
Symbol:	CEPT1
Mammalian Cell Selection:	Neomycin
Vector:	pCMV6-Entry (PS100001)
E. coli Selection:	Kanamycin (25 ug/mL)
ORF Nucleotide Sequence:	>RC207566 ORF sequence Red=Cloning site Blue=ORF Green=Tags(s)

TTTTGTAATACGACTCACTATAGGGCGGCCGGAATTCGTCGACTGGATCCGGTACCGAGGAGATCTGCC
GCC**CGATCGCC**

ATGAGTGGGCATCGATCAACAAGGAAAAGATGTGGAGATTCTCACCCGGAGTCCCCAGTGGGCTTCGGGC
ATATGAGTACTACAGGATGTGTATTAATAAATTTGTTTCAGTTACCAACACCACCATTGTCAAGACACCA
ACTAAAGCGGCTAGAAGAACACAGATATCAAAGTGCTGGACGGTCCCTGCTTGAGCCCTTAATGCAAGGG
TATTGGGAATGGCTCGTTAGAAGAGTCCCTCCTGGATTGCCCAAATTCATCACCATCATTGGACTGT
CAATAAACATCTGTACAACATTTTATTAGTCTTCTACTGCCCTACAGCTACAGAGCAGGCACCTCTGTG
GGCATATATTGCTTGTGCCTGTGGCCTTTTCATTTACCAGTCTTTGGATGCTATTGATGGGAAACAGGCA
AGAAGAACCAATAGTAGTTCCTCTGGGAGAACTTTTTGATCATGGCTGTGATTCACTATCAACAGTTT
TTGTGGTCTTGGAACTTGTATTGCAGTGCAGCTGGGACAAACCCTGATTGGATGTTTTTTTGTGTTT
TGCGGGGACATTTATGTTCTATTGTGCGCACTGGCAAACGTATGTTTCTGGAACATTGCGATTTGGAATA
ATTGATGTGACTGAAGTGCAAATCTTCATAAATCATGCATTTGCTGGCAGTGATTGGAGGACCACCTT
TTTGGCAATCTATGATCCAGTGTGAATATTCAAATGAAAATTTTCTGCACCTTGTACTGTAGCAGG
GACCATATTTCTGTACAAATTAATCCGTGTAATCTTCACAGGTGGTGTGGCAAAAATGGATCAACA
ATAGCAGGAACAAGTGCCTTTCTCCTTTCTCCATATTGGATCAGTGATTACATTAGCTGCAATGATCT
ACAAGAAATCTGCAGTTCAGTTTTTGAAAAGCATCCCTGCTTTATATACTGACATTTGTTTTGTGTC
TGCTAAAATCACTAATAAGCTTGTGGTTGCACACATGACGAAAAGTAAAATGCATTTGCATGACACAGCA
TTCATAGTCCGGCACTTTTGTCTGGACCAGTATTTAACAGCTTTATTGATGAATATATTGACTTT
GGATTGCCCTGGTTTTCTTTCTTTGATTTGATCCGCTACTGTGTCAGTGTGGCAATCAGATTGCGTC
TCACCTGCACATACATGTCTTCAGAATCAAGGTCTCTACAGCTCATTCTAATCATCAT

ACGCGTACGCGGCGGCTCGAGCAGAAACTCATCTCAGAAGAGGATCTGGCAGCAAATGATATCCTGGATT
ACAAGGATGACGACGATAAGGTTTAA



[View online »](#)

Protein Sequence: >RC207566 protein sequence
Red=Cloning site Green=Tags(s)

MSGHRSTRKRCGDSHPESVVGFGHMSTTGCVLNKLFLPTPLSRHQLKRLEEHRYSAGRSLLLEPLMQG
 YWEWL VRRVPSWIAPNLITIIIGLSINICTTILLVFYCPATEQAPLWAYIACACGLFIYQSLDAIDGKQA
 RRTNSSSPLGELFDHGCDLSTVFLVLTGTCIAVQLGTNPDMWFCCFAGTFMFYCAHWQTYVSGTLRFGI
 IDVTEVQIFIIIMHLLAVIGPPFWQSMIPVLNIQMKIFPALCTVAGTIF SCTNYFRVIFTGGVGKNGST
 IAGTSVLSPFLLHIGSVITLAAMIYKSAVQLFEKHPCLYLTFGFVSAKITNKL VVAHMTKSEMHLHDTA
 FIGPALLFLDQYFNSFIDEYIVLWIALVFSFFDLIRYCVSVCNQIASHLHIHFRIKVVSTAHSNHH

TRTRPLEQKLISEEDLAANDILDYKDDDDKV

Chromatograms: https://cdn.origene.com/chromatograms/mk6336_a02.zip

Restriction Sites: SgfI-MluI

Cloning Scheme:

Cloning sites used for ORF Shuttling:



* The last codon before the Stop codon of the ORF

ACCN: NM_001007794

ORF Size: 1248 bp

OTI Disclaimer: The molecular sequence of this clone aligns with the gene accession number as a point of reference only. However, individual transcript sequences of the same gene can differ through naturally occurring variations (e.g. polymorphisms), each with its own valid existence. This clone is substantially in agreement with the reference, but a complete review of all prevailing variants is recommended prior to use. [More info](#)

OTI Annotation: This clone was engineered to express the complete ORF with an expression tag. Expression varies depending on the nature of the gene.

Components: The ORF clone is ion-exchange column purified and shipped in a 2D barcoded Matrix tube containing 10ug of transfection-ready, dried plasmid DNA (reconstitute with 100 ul of water).

Reconstitution Method:

1. Centrifuge at 5,000xg for 5min.
2. Carefully open the tube and add 100ul of sterile water to dissolve the DNA.
3. Close the tube and incubate for 10 minutes at room temperature.
4. Briefly vortex the tube and then do a quick spin (less than 5000xg) to concentrate the liquid at the bottom.
5. Store the suspended plasmid at -20°C. The DNA is stable for at least one year from date of shipping when stored at -20°C.

RefSeq: [NM_001007794.2](#)

RefSeq Size: 2251 bp

RefSeq ORF: 1251 bp

Locus ID: 10390

UniProt ID: [Q9Y6K0](#)

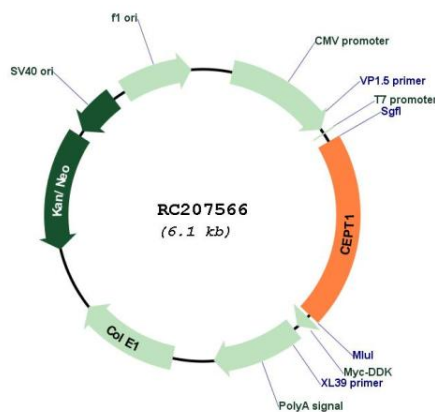
Cytogenetics: 1p13.3

Protein Families: Transmembrane

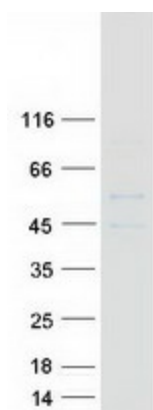
MW: 46.6 kDa

Gene Summary: This gene codes for a choline/ethanolaminephosphotransferase, which functions in the synthesis of choline- or ethanolamine- containing phospholipids. Alternative splicing results in multiple transcript variants. [provided by RefSeq, Aug 2016]

Product images:



Circular map for RC207566



Coomassie blue staining of purified CEPT1 protein (Cat# [TP307566]). The protein was produced from HEK293T cells transfected with CEPT1 cDNA clone (Cat# RC207566) using MegaTran 2.0 (Cat# [TT210002]).