

## Product datasheet for **RC207564**

### SEM1 (NM\_006304) Human Tagged ORF Clone

#### Product data:

Product Type:	Expression Plasmids
Product Name:	SEM1 (NM_006304) Human Tagged ORF Clone
Tag:	Myc-DDK
Symbol:	SEM1
Synonyms:	C7orf76; DSS1; ECD; PSMD15; SHFD1; Shfdg1; SHFM1; SHSF1
Mammalian Cell Selection:	Neomycin
Vector:	pCMV6-Entry (PS100001)
E. coli Selection:	Kanamycin (25 ug/mL)
ORF Nucleotide Sequence:	>RC207564 ORF sequence Red=Cloning site Blue=ORF Green=Tags(s)  TTTTGTAATACGACTCACTATAGGGCGGCCGGAATTCGTCGACTGGATCCGGTACCGAGGAGATCTGCC GCC <b>CGATCGCC</b>  ATGTCAGAGAAAAAGCAGCCGGTAGACTTAGGTCTGTTAGAGGAAGACGACGAGTTTGAAGAGTTCCTG CCGAAGACTGGGCTGGCTTAGATGAAGATGAAGATGCACATGTCTGGGAGGATAATTGGGATGATGACAA TGTAGAGGATGACTTCTCTAATCAGTTACGAGCTGAAGTAGAGAAACATGGTTATAAGATGGAGACTTCA  AC <b>CGGT</b> ACGCGGCCGCTCGAGCAGAAACTCATCTCAGAAGAGGATCTGGCAGCAAATGATATCCTGGATT ACAAGGATGACGACGATAAGGTTTAA
Protein Sequence:	>RC207564 protein sequence Red=Cloning site Green=Tags(s)  MSEKKQPVDLGLLEEDDEFEEFPAEDWAGLDEDEDAHVWEDNWDDDNVEDDFSNQLRAELEKHGYKMETS  TRTRPLEQ <b>KL</b> ISEEDLAANDILDYKDDDDKV
Chromatograms:	<a href="https://cdn.origene.com/chromatograms/mk6335_e06.zip">https://cdn.origene.com/chromatograms/mk6335_e06.zip</a>
Restriction Sites:	Sgfl-MluI



[View online »](#)

**Cloning Scheme:**


**ACCN:** NM\_006304

**ORF Size:** 210 bp

**OTI Disclaimer:** The molecular sequence of this clone aligns with the gene accession number as a point of reference only. However, individual transcript sequences of the same gene can differ through naturally occurring variations (e.g. polymorphisms), each with its own valid existence. This clone is substantially in agreement with the reference, but a complete review of all prevailing variants is recommended prior to use. [More info](#)

**OTI Annotation:** This clone was engineered to express the complete ORF with an expression tag. Expression varies depending on the nature of the gene.

**Components:** The ORF clone is ion-exchange column purified and shipped in a 2D barcoded Matrix tube containing 10ug of transfection-ready, dried plasmid DNA (reconstitute with 100 ul of water).

- Reconstitution Method:**
1. Centrifuge at 5,000xg for 5min.
  2. Carefully open the tube and add 100ul of sterile water to dissolve the DNA.
  3. Close the tube and incubate for 10 minutes at room temperature.
  4. Briefly vortex the tube and then do a quick spin (less than 5000xg) to concentrate the liquid at the bottom.
  5. Store the suspended plasmid at -20°C. The DNA is stable for at least one year from date of shipping when stored at -20°C.

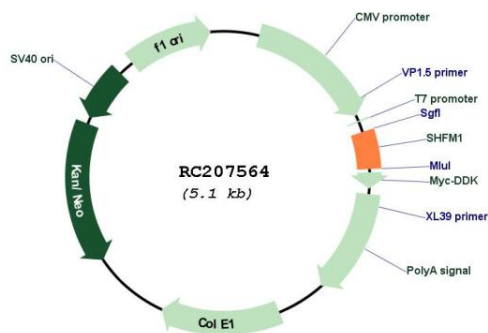
**Note:** Plasmids are not sterile. For experiments where strict sterility is required, filtration with 0.22um filter is required.

**RefSeq:** [NM\\_006304.1](#), [NP\\_006295.1](#)

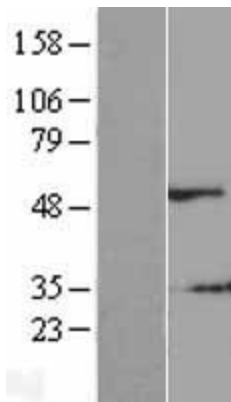
**RefSeq Size:** 509 bp  
**RefSeq ORF:** 213 bp  
**Locus ID:** 7979  
**UniProt ID:** [P60896](#)  
**Cytogenetics:** 7q21.3  
**Domains:** DSS1\_SEM1  
**Protein Pathways:** Homologous recombination, Proteasome  
**MW:** 8.3 kDa

**Gene Summary:** The product of this gene has been localized within the split hand/split foot malformation locus SHFM1 at chromosome 7. It has been proposed to be a candidate gene for the autosomal dominant form of the heterogeneous limb developmental disorder split hand/split foot malformation type 1. In addition, it has been shown to directly interact with BRCA2. It also may play a role in the completion of the cell cycle. [provided by RefSeq, Jul 2008]

### Product images:



Circular map for RC207564



Western blot validation of overexpression lysate (Cat# [LY416746]) using anti-DDK antibody (Cat# [TA50011-100]). Left: Cell lysates from untransfected HEK293T cells; Right: Cell lysates from HEK293T cells transfected with RC207564 using transfection reagent MegaTran 2.0 (Cat# [TT210002]).