

Product datasheet for RC207562

BOB1 (POU2AF1) (NM_006235) Human Tagged ORF Clone

Product data:

Product Type:	Expression Plasmids
Product Name:	BOB1 (POU2AF1) (NM_006235) Human Tagged ORF Clone
Tag:	Myc-DDK
Symbol:	BOB1
Synonyms:	BOB1; OBF-1; OBF1; OCAB
Mammalian Cell Selection:	Neomycin
Vector:	pCMV6-Entry (PS100001)
E. coli Selection:	Kanamycin (25 ug/mL)
ORF Nucleotide Sequence:	>RC207562 ORF sequence Red=Cloning site Blue=ORF Green=Tags(s)

TTTTGTAATACGACTCACTATAGGGCGCCGGGAATTCGTCGACTGGATCCGGTACCGAGGAGATCTGCC
GCC**CGATCGC**C

ATGCTCTGGCAAAAACCCACAGCTCCGGAGCAAGCCCCAGCCCCGGCCCGCCATACCAGGGCGTCCGTG
TGAAGGAGCCAGTGAAGGAAGTCTGAGGAGGAAGCGAGGCCACGCCAGCAGTGGGGCAGCACCTGCACC
TACGGCGGTGGTCTGCCCCATCAGCCCCTGGCGACCTACACCACAGTGGGTCTTCTCTGCCTGGACATG
GAAGGTTCTGTCTGCAGTGACAGAGGAGGCTGCCCTGTGTGCCGGCTGGCTCTCCAGCCACCCCGG
CCACCCTGCAGCCCTGGCCCCATGGACACCTTACACCGAGTATGTGCCCATGAAGCTGTCAGCTGCCC
CTACTCAGCTGACATGTATGTGCAGCCCGTGTGCCCCAGCTACACGGTGGTGGGGCCCTCCTCAGTGTG
ACCTATGCCTCTCCGCCACTCATACCAATGTCACGACAAGAAGCTCCGCCACGCCCGCAGTGGGGCCCC
CGCTGGAGGGCCAGAGCACCAGGCACCCCTCACCTATTTCCCGTGGCCTCAGCCCTTTCCACACTACC
CACCTCCACCCTGCAGTACCAGCCTCCGGCCCCAGCCCTACCTGGGCCCCAGTTTGTCCAGCTCCCCATC
TCTATCCAGAGCCAGTCCTTCAGGACATGGAAGACCCAGAAGAGCCGCCAGCTCGTTGACCATCGACA
AGCTGCTTTGGAGGAAGAGGATAGCGACGCCTATGCGCTTAACCACACTCTCTGTGGAAGGCTTT

ACGCGTACGCGGCCGCTCGAGCAGAAACTCATCTCAGAAGAGGATCTGGCAGCAAATGATATCCTGGATT
ACAAGGATGACGACGATAAGGTTTAA



[View online »](#)

Protein Sequence: >RC207562 protein sequence
 Red=Cloning site Green=Tags(s)

MLWQKPTAPEQAPAPARPYQGVVRVKEPVKELLRRKRGHASSGAAPATAVVLPHQPLATYTTVGPSCLDMEGSVSAVTEEAALCAGWLSQPTPATLQPLAPWTPYTEYVPHEAVSCPYSADMYVQPVCPSTYVVGPSSVLYASPLITNVTTRSSATPAVGPPLLEGPEHQAPLTYFPWPQPLSTLPTSTLQYQPPAPALPGPQFVQLPISIPEPVLQDMEDPRRAASSLTIDKLLLEEDSDAYALNHTLSVEGF

TRTRPLEQKLISEEDLAANDILDYKDDDDKV

Chromatograms: https://cdn.origene.com/chromatograms/mk6517_a09.zip

Restriction Sites: SgfI-MluI

Cloning Scheme:

Cloning sites used for ORF Shuttling:



* The last codon before the Stop codon of the ORF

ACCN: NM_006235

ORF Size: 768 bp

OTI Disclaimer: The molecular sequence of this clone aligns with the gene accession number as a point of reference only. However, individual transcript sequences of the same gene can differ through naturally occurring variations (e.g. polymorphisms), each with its own valid existence. This clone is substantially in agreement with the reference, but a complete review of all prevailing variants is recommended prior to use. [More info](#)

OTI Annotation: This clone was engineered to express the complete ORF with an expression tag. Expression varies depending on the nature of the gene.

Components: The ORF clone is ion-exchange column purified and shipped in a 2D barcoded Matrix tube containing 10ug of transfection-ready, dried plasmid DNA (reconstitute with 100 ul of water).

Reconstitution Method:

1. Centrifuge at 5,000xg for 5min.
2. Carefully open the tube and add 100ul of sterile water to dissolve the DNA.
3. Close the tube and incubate for 10 minutes at room temperature.
4. Briefly vortex the tube and then do a quick spin (less than 5000xg) to concentrate the liquid at the bottom.
5. Store the suspended plasmid at -20°C. The DNA is stable for at least one year from date of shipping when stored at -20°C.

RefSeq: [NM_006235.3](#)

RefSeq Size: 3032 bp

RefSeq ORF: 771 bp

Locus ID: 5450

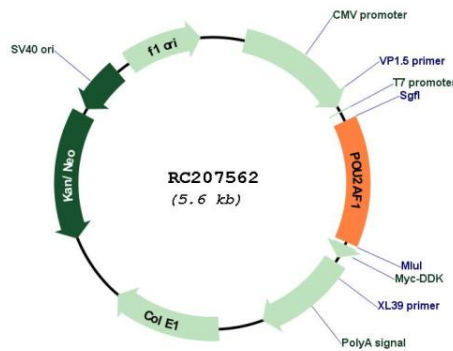
UniProt ID: [Q16633](#)

Cytogenetics: 11q23.1

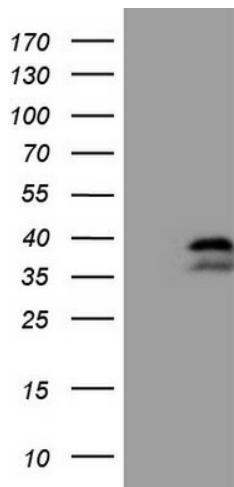
MW: 27.4 kDa

Gene Summary: Transcriptional coactivator that specifically associates with either OCT1 or OCT2. It boosts the OCT1 mediated promoter activity and to a lesser extent, that of OCT2. It has no intrinsic DNA-binding activity. It recognizes the POU domains of OCT1 and OCT2. It is essential for the response of B-cells to antigens and required for the formation of germinal centers. [UniProtKB/Swiss-Prot Function]

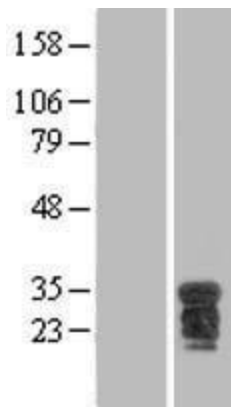
Product images:



Circular map for RC207562



HEK293T cells were transfected with the pCMV6-ENTRY control (Cat# [PS100001], Left lane) or pCMV6-ENTRY POU2AF1 (Cat# RC207562, Right lane) cDNA for 48 hrs and lysed. Equivalent amounts of cell lysates (5 ug per lane) were separated by SDS-PAGE and immunoblotted with anti-POU2AF1 (Cat# [TA807930])(1:2000). Positive lysates [LY416779] (100ug) and [LC416779] (20ug) can be purchased separately from OriGene.



Western blot validation of overexpression lysate (Cat# [LY416779]) using anti-DDK antibody (Cat# [TA50011-100]). Left: Cell lysates from untransfected HEK293T cells; Right: Cell lysates from HEK293T cells transfected with RC207562 using transfection reagent MegaTran 2.0 (Cat# [TT210002]).