

## Product datasheet for **RC207561**

### Peripherin (PRPH) (NM\_006262) Human Tagged ORF Clone

#### Product data:

Product Type:	Expression Plasmids
Product Name:	Peripherin (PRPH) (NM_006262) Human Tagged ORF Clone
Tag:	Myc-DDK
Symbol:	Peripherin
Synonyms:	NEF4; PRPH1
Mammalian Cell Selection:	Neomycin
Vector:	pCMV6-Entry (PS100001)
E. coli Selection:	Kanamycin (25 ug/mL)



[View online »](#)

**ORF Nucleotide Sequence:**

>RC207561 ORF sequence  
 Red=Cloning site Blue=ORF Green=Tags(s)

TTTTGTAATACGACTCACTATAGGGCGGCCGGAATTCGTCGACTGGATCCGGTACCGAGGAGATCTGCC  
 GCC**GCGATCGCC**

ATGAGCCACCACCGTCGGGCTCGGGCCGGTTCAGCTCCACCTCATACCGCCGTACCTTCGGTCCAC  
 CGCCTCACTATCCCCGGGGCCTTCTCCTACTCGTCCAGCTCCCGCTTCTCCAGCAGCCGCTGCTGGG  
 CTCGCGTCCCCGAGCTCCTCGGTGCGCCTGGGACGTTCCGTAGCCCCGAGCGGGAGCGGGCCCTC  
 CTGCGCCTGCCCTCGGAGCGCTCGACTTCTCCATGGCCGAGGCCCTCAACCAGGAGTTCCTGGCCACGC  
 GCAGCAACGAGAAGCAGGAGCTGCAGGAGCTCAACGACCGCTTCGCCAATTCATCGAGAAGGTACGCTT  
 TCTGGAGCAGCAGAACCGGGCCCTGCGCGGGGAGCTGAGCCAAGCCGGGGCCAGGAGCCGGCGCGCC  
 GACCAGCTGTGCCAGCAGGAGCTGCGCGAGCTGCGGCGAGAGCTGGAGCTGTTGGCCGCGAGCGTGACC  
 GGGTGCAGGTGGAGCGGACGGGCTGGCGGAGGACCTGGCGCGCTCAAGCAGAGGTTGGAGGAGGAGAC  
 GCGCAAGCGGGAGGACGCGGAGCACAACCTCGTCTCTTCGCAAGGACGTGGACGATGCCACTCTGTCC  
 CGCTGGAAGTAGAGCGCAAGATTGAGTCTCTGATGGATGAGATTGAGTTCCTCAAGAAGCTGCACGAGG  
 AGGAGCTGCGAGACCTGCAGGTGAGTGTGGAGAGCCAGCAGGTGCAGCAGGTGGAGTGGAAAGCCACGGT  
 GAAGCCCAGCTGACGGCAGCGCTGAGGGACATCCGCGCGCAGTACGAGAGCATCGCCGCGAAGAACCCTG  
 CAGGAGGCGGAGGAGTGGTACAAGTCCAAGTACGCGGACCTGTCCGACGCTGCCAACCGGAACCACGAGG  
 CCCTGCGCCAGGCCAAGCAGGAGATGAACGAGTCCCGACGCCAGATCCAGAGTCTAACGTGCGAGGTGGA  
 CGGGCTGCGCGGCACGAACGAGGCGCTGCTCAGGACGTTGAGAGAGCTGGAGGAGCAGTTCGCCCTGGAG  
 GCGGGGGGCTACCAGGCGGGCGCTGCGCGGCTCGAGGAGGAGCTGCGACAGCTAAAAGAGGAGATGGCCG  
 GGCACCTGAGGGAGTACCAGGAGCTCTCAACGTCAAGTGGCCCTGGACATCGAGATCGCCACCTACCG  
 CAAGCTGCTGGAGGGCGAGGAGAGCCGGATCTCCGTGCCGTCCATTCTTTTGCCTCCTTAAATATAAAG  
 ACGACTGTGCTGAGGTGGAGCCTCCCCAGGACAGCCACAGCCGGAAGACGGTTCTGATCAAGACCATTG  
 AGACCCGGAATGGGGAGGTGGTACAGAGTCCCAGAAGGAGCAGCGCAGTGAGCTGGACAAGTCTTCTG  
 CCACAGTTAC

**ACGCGT**ACGCGGGCCGCTCGAGCAGAAACTCATCTCAGAAGAGGATCTGGCAGCAAATGATATCCTGGATT  
 ACAAGGATGACGACGATAAGGTTTAA

**Protein Sequence:**

>RC207561 protein sequence  
 Red=Cloning site Green=Tags(s)

MSHHPGLRAGFSSTSYRRTFGPPPSLSPGAFSYSSSRFSSSRLLSASPSVVRLGFRSPRAGAGAL  
 LRLPSERLDFSMAEALNQEFATRNSNEKQELQELNDRFANFIEKVRFLQQAALRGELSQAARGQEPARA  
 DQLCQQELRELRELELLGRERDRVQVERDGLAEDLAALKQRLEETTRKREDAEHLVLFRKDVDDATLS  
 RLELERKIESLMDEIEFLKHLHEEELRDLQVSVESQQVQVEVEATVKPELTAALRDIRAQYESIAAKNL  
 QEAEWYKSKYADLSDAANRNHEALRQAKQEMNESRRQIQSLTCEVDGLRGTNEALLRQLRELEEQFALE  
 AGGYQAGAARLEELRQLKEEMARHLREYQELLNKMLDIEIATYRKLEEGESRISVPVHSFASLNIK  
 TTVPEVEPPQDHSRKTVLIKTIETRNGEVVTSQKEQRSELDKSSAHSY

**TR**TRPLEQKLISEEDLAANDILDYKDDDDKV

**Chromatograms:**

[https://cdn.origene.com/chromatograms/mk6019\\_c07.zip](https://cdn.origene.com/chromatograms/mk6019_c07.zip)

**Restriction Sites:**

Sgfl-Mlul

**Cloning Scheme:**


**ACCN:** NM\_006262

**ORF Size:** 1410 bp

**OTI Disclaimer:** The molecular sequence of this clone aligns with the gene accession number as a point of reference only. However, individual transcript sequences of the same gene can differ through naturally occurring variations (e.g. polymorphisms), each with its own valid existence. This clone is substantially in agreement with the reference, but a complete review of all prevailing variants is recommended prior to use. [More info](#)

**OTI Annotation:** This clone was engineered to express the complete ORF with an expression tag. Expression varies depending on the nature of the gene.

**Components:** The ORF clone is ion-exchange column purified and shipped in a 2D barcoded Matrix tube containing 10ug of transfection-ready, dried plasmid DNA (reconstitute with 100 ul of water).

**Reconstitution Method:**

1. Centrifuge at 5,000xg for 5min.
2. Carefully open the tube and add 100ul of sterile water to dissolve the DNA.
3. Close the tube and incubate for 10 minutes at room temperature.
4. Briefly vortex the tube and then do a quick spin (less than 5000xg) to concentrate the liquid at the bottom.
5. Store the suspended plasmid at -20°C. The DNA is stable for at least one year from date of shipping when stored at -20°C.

**Note:** Plasmids are not sterile. For experiments where strict sterility is required, filtration with 0.22um filter is required.

**RefSeq:** [NM\\_006262.4](#)

**RefSeq Size:** 1833 bp

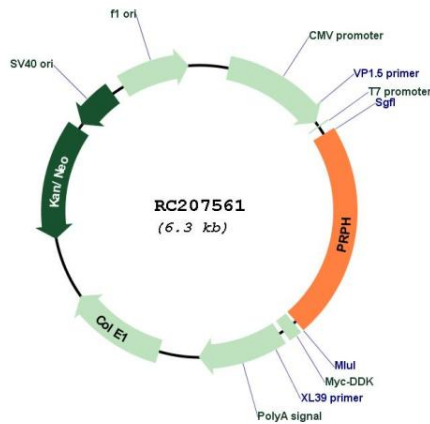
**RefSeq ORF:** 1413 bp

**Locus ID:** 5630

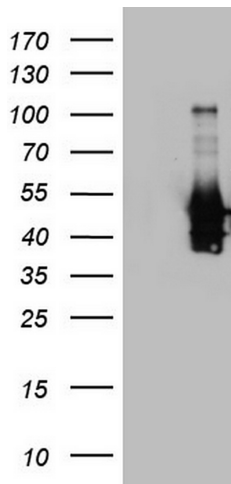
UniProt ID: [P41219](#)  
 Cytogenetics: 12q13.12  
 Protein Pathways: Amyotrophic lateral sclerosis (ALS)  
 MW: 53.7 kDa

Gene Summary: This gene encodes a cytoskeletal protein found in neurons of the peripheral nervous system. The encoded protein is a type III intermediate filament protein with homology to other cytoskeletal proteins such as desmin, and is a different protein that the peripherin found in photoreceptors. Mutations in this gene have been associated with susceptibility to amyotrophic lateral sclerosis. [provided by RefSeq, Jul 2008]

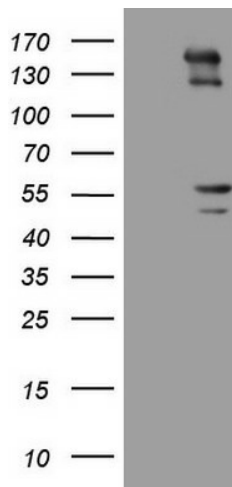
**Product images:**



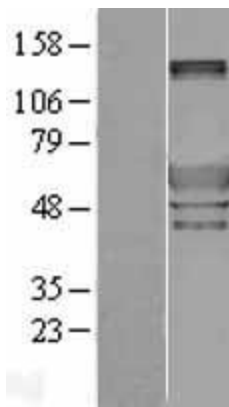
Circular map for RC207561



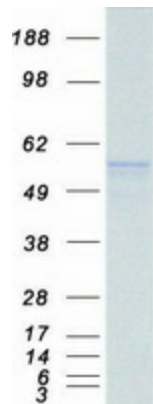
HEK293T cells were transfected with the pCMV6-ENTRY control (Cat# [PS100001], Left lane) or pCMV6-ENTRY PRPH (Cat# RC207561, Right lane) cDNA for 48 hrs and lysed. Equivalent amounts of cell lysates (5 ug per lane) were separated by SDS-PAGE and immunoblotted with anti-PRPH (Cat# [TA806183]). Positive lysates [LY401885] (100ug) and [LC401885] (20ug) can be purchased separately from OriGene.



HEK293T cells were transfected with the pCMV6-ENTRY control (Left lane) or pCMV6-ENTRY PRPH (RC207561, Right lane) cDNA for 48 hrs and lysed. Equivalent amounts of cell lysates (5 ug per lane) were separated by SDS-PAGE and immunoblotted with anti-PRPH ([TA806226]). Positive lysates [LY401885] (100ug) and [LC401885] (20ug) can be purchased separately from OriGene.



Western blot validation of overexpression lysate (Cat# [LY401885]) using anti-DDK antibody (Cat# [TA50011-100]). Left: Cell lysates from untransfected HEK293T cells; Right: Cell lysates from HEK293T cells transfected with RC207561 using transfection reagent MegaTran 2.0 (Cat# [TT210002]).



Coomassie blue staining of purified PRPH protein (Cat# [TP307561]). The protein was produced from HEK293T cells transfected with PRPH cDNA clone (Cat# RC207561) using MegaTran 2.0 (Cat# [TT210002]).