

## Product datasheet for **RC207560**

### TESK1 (NM\_006285) Human Tagged ORF Clone

#### Product data:

Product Type:	Expression Plasmids
Product Name:	TESK1 (NM_006285) Human Tagged ORF Clone
Tag:	Myc-DDK
Symbol:	TESK1
Mammalian Cell Selection:	Neomycin
Vector:	pCMV6-Entry (PS100001)
E. coli Selection:	Kanamycin (25 ug/mL)



[View online »](#)

**ORF Nucleotide Sequence:**

>RC207560 representing NM\_006285  
 Red=Cloning site Blue=ORF Green=Tags(s)

TTTTGTAATACGACTCACTATAGGGCGGCCGGAATTCGTCGACTGGATCCGGTACCGAGGAGATCTGCC  
 GCC**CGGATCGCC**

ATGGCCGGGGAACGGCCCCACTGCGGGCCCTGGGCCGGCCCTGGAGAGGTGCCGGGGAGGGGCC  
 CGGGCCGGGGGACGGGCGGAGGCCGGCCGGGGCCGCCCTCCTCCTACCGGGCTCTCCGACGCGC  
 CGTGTCTAGCCTGGCGCTGTGGACGATTTTCACTGCGCGGAGAAGATCGGGCCGGCTTCTTCTGAG  
 GTCTACAAGTTTCGGCACCGACAGTCAGGGCAAGTCATGGTGCTGAAGATGAACAAGCTCCCCAGTAACC  
 GGGGAACACACTACGGGAAGTGCAGCTGATGAACCGGCTCAGGCACCCCAACATCCTAAGTTTCATGGG  
 AGTCTGTGTGCACAGGGACAGCTGCACGCTTTACAGAGTATATGAATGGGGGACATTGGAACAGCTG  
 CTCAGCTCCCCTGAACCCTATCCTGGCCGGTCAAGCTCCACCTGGCCCTGGACATTGCCGAGGCTGC  
 GGTACCTGCACCTCAAAGGTGTATTTACCAGGACCTCACATCCAAGAAGTGTCTAGTCCGACGGGAAGA  
 TCGAGGCTTACCAGCTGTCGTGGGTGACTTCGGGCTGGCCGAAAAGATTCTGTGTATAGGGAGGGGGCA  
 AGGAAGGAGCCATTGGCCGTGGTGGGCTCCCATACTGGATGGCTCCAGAGGTGTACGGGGTGAGCTGT  
 ATGATGAGAAGGCTGATGTCTTTGCCTTCGGGATTGCTCTGTGAGCTCATCGCCCGAGTACCTGCAGA  
 CCCTGACTACCTACCACGCACTGAGGACTTTGGCCTGGATGTGCCTGCTTCCGAACCTCTGGTGGGGAT  
 GACTGCCCACTGCCTTTCTTGTCTCTGGCCATCCACTGCTGCAACCTGGAACCCAGCACCCGTGCCCTT  
 TCACCGAAATTACCCAGCACCTGGAATGGATCCTGGAGCAGCTGCCTGAGCCAGCCCCACTACCCAGGAC  
 CGCCCTGACACACAATCAGGGCTCTGTTGCAAGAGGGGGTCCCTCTGCCACGCTTCCAGGCCAGATCCC  
 CGGCTTCCCGAAGCCGGTCAAGCTCTTCTGCCCCATCACCAGAATCACCCCAACTGGGGGGGACA  
 ATCTGACTCGAGTCAACCCTTCTACTACGGGAAGACCTCAGGGGTGGCAAGATCAAGCTTTAGACAC  
 ACCCAGCAAGCCAGTCTGCCTCTTGTGCCACCATCACCATTCCCATCCACTCAGCTGCCCTTGGTGACC  
 ACTCCGGAGACCCTGGTCCAGCCTGGGACACCTGCCCGCCGCTGCCGCTACTACCCTATCCCCGAGC  
 TCCCCCGCGTATGGAGACAGCACTGCCAGTCTGGCCCTCCCGCTGTGGGCCCCCTCGGCTGAAGAGAA  
 GATGGAGTGCAGGGCAGCAGCCCTGAGCCGGAACCTCCAGGGCCAGCGCCCGAGCTGCCTCTGGCTGTG  
 GCCACAGACAACCTCATCAGCACCTGTTCTCGGCCTCCCAACCTGGTCCCCTAGATCAGGACCCGTCC  
 TCAATAACAATCCCCAGCTGTGGTGGTGAACCTCCCAACAAGGCTGGGCTGGGGAGCCCTGGAACCGGGC  
 CCAGCATAGCCTGCCCGGGCGGACGCCCTGGAGCGGACAGAACCCTCGCCACCCCTTCAGCTCCCCGG  
 GAGCCCGATGAGGGGCTGCCCTGTCTGGCTGCTGCCTCGGCCCTTTCAGCTTTGGCTTCTGTCCATGT  
 GCCCCCGCCACACCAGCTGTTGCCCGTACCGCAACCTGAACTGTGAGGCGGGGAGTCTCCTCTGCCA  
 CCGAGGGCACCACGCCAAGCCACCCACCCAGCCTGCAGCTGCCTGGGGCAGCTCT

**ACGCGT**ACGCGGCCGCTCGAGCAGAACTCATCTCAGAAGAGGATCTGGCAGCAAATGATATCCTGGATT  
 ACAAGGATGACGACGATAAGGTTTAA

**Protein Sequence:**

>RC207560 representing NM\_006285  
 Red=Cloning site Green=Tags(s)

MAGERPPLRPGPGPEVPGEGPPGGTGGGPRGRPSSYRRLRSVSSLARVDDFHCAEKIGAGFFSE  
 VYKVRHRQSGQVMVLKMNKLPNSNRGNTLREVQLMNRLRHPNILRFMGVCVHQQLHALTEYMNGGTLLEQL  
 LSSPEPLSWPVRLLALDIARGLRYLHSGVFFHRDLTSKNCLVRREDRGFTAVVGDVFLAEKIPVYREGA  
 RKEPLAVVGSPPYMAPEVLRGELYDEKADVFAFGIVLCEL IARVPADPDYLPRTEDFGLDVPAFRTLVDG  
 DCPLPFLLLAIHCCNLEPSTRAPFTEITQHLEWILEQLPEPAPL TRTAL THNQGSVARGGPSATLPRPDP  
 RLSRSRSDLFLPPSPSPNWDNL TRVNPFLSLREDLRGGKIKLLDTPSKPVLPLVPPSPFPSTQLPLVT  
 TPETLVQPGTPARRCRSLPSSPELPRRMETALPGPGPPAVGPPSAEEMECEGSSPEPEPPGPAPQLPLAV  
 ATDNFISTCSSASQPSPRSGPVLNNPPAVVNSPQGWAGEPWNRAQHSLPRAAALERTEPSPPPSAPR  
 EPDEGLPCPGCCLGPFSGFLSMCPRPTPAVARYRNLNCEAGSLLCHRGHAKPPTPSLQLPGARS

**TR**TRPLEQKLISEEDLAANDILDYKDDDDKV

**Chromatograms:**

[https://cdn.origene.com/chromatograms/mg4124\\_b03.zip](https://cdn.origene.com/chromatograms/mg4124_b03.zip)

Restriction Sites: SgfI-MluI

Cloning Scheme:



ACCN: NM\_006285

ORF Size: 1878 bp

OTI Disclaimer: The molecular sequence of this clone aligns with the gene accession number as a point of reference only. However, individual transcript sequences of the same gene can differ through naturally occurring variations (e.g. polymorphisms), each with its own valid existence. This clone is substantially in agreement with the reference, but a complete review of all prevailing variants is recommended prior to use. [More info](#)

OTI Annotation: This clone was engineered to express the complete ORF with an expression tag. Expression varies depending on the nature of the gene.

Components: The ORF clone is ion-exchange column purified and shipped in a 2D barcoded Matrix tube containing 10ug of transfection-ready, dried plasmid DNA (reconstitute with 100 ul of water).

- Reconstitution Method:
1. Centrifuge at 5,000xg for 5min.
  2. Carefully open the tube and add 100ul of sterile water to dissolve the DNA.
  3. Close the tube and incubate for 10 minutes at room temperature.
  4. Briefly vortex the tube and then do a quick spin (less than 5000xg) to concentrate the liquid at the bottom.
  5. Store the suspended plasmid at -20°C. The DNA is stable for at least one year from date of shipping when stored at -20°C.

RefSeq: [NM\\_006285.3](#)

RefSeq Size: 2559 bp

RefSeq ORF: 1881 bp

Locus ID: 7016

UniProt ID: [Q15569](#)

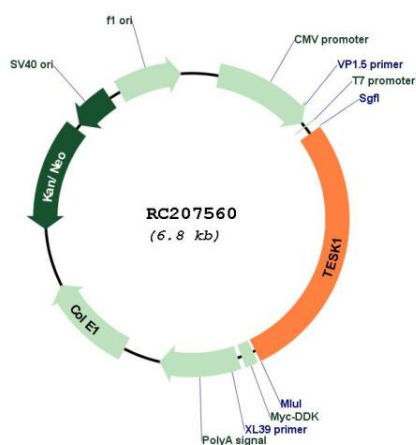
**Cytogenetics:** 9p13.3

**Protein Families:** Druggable Genome, Protein Kinase

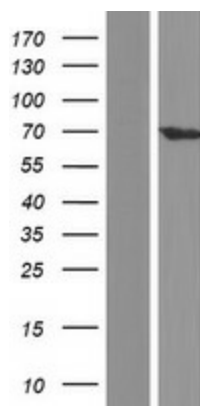
**MW:** 67.5 kDa

**Gene Summary:** This gene product is a serine/threonine protein kinase that contains an N-terminal protein kinase domain and a C-terminal proline-rich domain. Its protein kinase domain is most closely related to those of the LIM motif-containing protein kinases (LIMKs). The encoded protein can phosphorylate myelin basic protein and histone in vitro. The testicular germ cell-specific expression and developmental pattern of expression of the mouse gene suggests that this gene plays an important role at and after the meiotic phase of spermatogenesis. Alternative splicing results in multiple transcript variants encoding different isoforms. [provided by RefSeq, Dec 2015]

### Product images:



Circular map for RC207560



Western blot validation of overexpression lysate (Cat# [LY416753]) using anti-DDK antibody (Cat# [TA50011-100]). Left: Cell lysates from untransfected HEK293T cells; Right: Cell lysates from HEK293T cells transfected with RC207560 using transfection reagent MegaTran 2.0 (Cat# [TT210002]).