

Product datasheet for RC207559

Bim (BCL2L11) (NM_138621) Human Tagged ORF Clone

Product data:

Product Type: Expression Plasmids
Product Name: Bim (BCL2L11) (NM_138621) Human Tagged ORF Clone
Tag: Myc-DDK
Symbol: Bim
Synonyms: BAM; BIM; BOD
Mammalian Cell Selection: Neomycin
Vector: pCMV6-Entry (PS100001)
E. coli Selection: Kanamycin (25 ug/mL)
ORF Nucleotide Sequence: >RC207559 representing NM_138621
 Red=Cloning site Blue=ORF Green=Tags(s)

CTATAGGGCGCCGGGAATTCGTCGACTGGATCCGGTACCGAGGAGATCTGCCGCCGCGATCGCCGGCGC
GCCC

ATGGCAAAGCAACCTTCTGATGTAAGTTCTGAGTGTGACCGAGAAGGTAGACAATTGCAGCCTGCGGAGA
GGCCTCCCAGCTCAGACCTGGGGCCCCCTACCTCCCTACAGACAGAGCCACAAGGTAATCCTGAAGGCAA
TACGGAGGTGAAGGGGACAGCTGCCCCACGGCAGCCCTCAGGGCCCGTGGCCCCACCTGCCAGCCCT
GGCCCTTTTGTACCAGATCCCCGCTTTTCATCTTTATGAGAAGATCCTCCCTGCTGTCTCGATCCTCCA
GTGGGTATTTCTTTTGACACAGACAGGAGCCCAGCACCCATGAGTTGTGACAAATCAACACAAACCCC
AAGTCTCCTTGCCAGGCCTTCAACCACTATCTCAGTGCAATGGCTTCCATGAGGCAGGCTGAACCTGCA
GATATGCCCCAGAGATATGGATCGCCCAAGAGTTGCGGCGTATTGGAGACGAGTTTAACGCTTACTATG
CAAGGAGGGTATTTTGAATAATTACCAAGCAGCCGAAGACCACCACGAATGGTTATCTTACGACTGTT
ACGTTACATTGTCCGCTGGTGTGGAGAATGCAT

ACGCGTACGCGGCCGCTCGAGCAGAACTCATCTCAGAAGAGGATCTGGCAGCAAATGATATCCTGGATT
ACAAGGATGACGACGATAAGGTTTAA

Protein Sequence: >RC207559 representing NM_138621
 Red=Cloning site Green=Tags(s)

MAKQPSDVSSECDREGRQLQPAERPPQLRPGAPTSLQTEPQGNPEGNHGGEGDSCPHGSPQGPLAPPASP
GPFATRSPLFIFMRSSLLSRSSSGYFSFDTRSPAPMSCDKSTQTPSPPCQAFNHYLSAMASMRQAEP
DMRPEIWIQAQLRRIGDEFNAYYARRVFLNNYQAAEDHPRMVILRLLRYIVRLVWRMH

TRTRPLEQKLISEEDLAANDILDYKDDDDKV

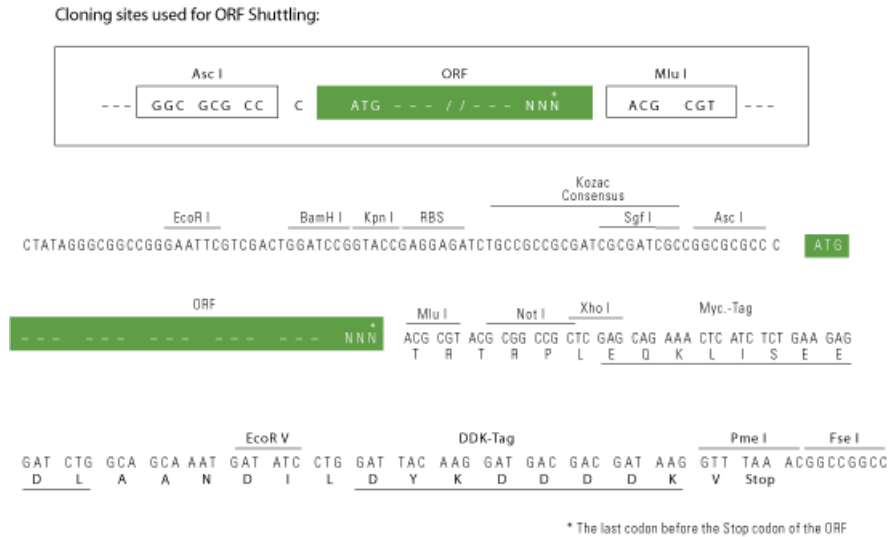


[View online »](#)

Chromatograms: https://cdn.origene.com/chromatograms/mg3554_b05.zip

Restriction Sites: AscI-MluI

Cloning Scheme:



ACCN: NM_138621

ORF Size: 594 bp

OTI Disclaimer: The molecular sequence of this clone aligns with the gene accession number as a point of reference only. However, individual transcript sequences of the same gene can differ through naturally occurring variations (e.g. polymorphisms), each with its own valid existence. This clone is substantially in agreement with the reference, but a complete review of all prevailing variants is recommended prior to use. [More info](#)

OTI Annotation: This clone was engineered to express the complete ORF with an expression tag. Expression varies depending on the nature of the gene.

Components: The ORF clone is ion-exchange column purified and shipped in a 2D barcoded Matrix tube containing 10ug of transfection-ready, dried plasmid DNA (reconstitute with 100 ul of water).

Reconstitution Method:

1. Centrifuge at 5,000xg for 5min.
2. Carefully open the tube and add 100ul of sterile water to dissolve the DNA.
3. Close the tube and incubate for 10 minutes at room temperature.
4. Briefly vortex the tube and then do a quick spin (less than 5000xg) to concentrate the liquid at the bottom.
5. Store the suspended plasmid at -20°C. The DNA is stable for at least one year from date of shipping when stored at -20°C.

Note: Plasmids are not sterile. For experiments where strict sterility is required, filtration with 0.22um filter is required.

RefSeq: [NM_138621.5](#)

RefSeq Size: 3422 bp

RefSeq ORF: 597 bp

Locus ID: 10018

UniProt ID: [O43521](#)

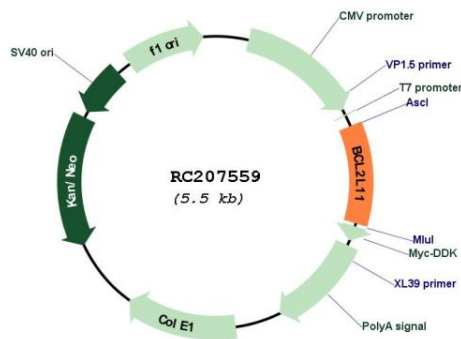
Cytogenetics: 2q13

Protein Families: Druggable Genome

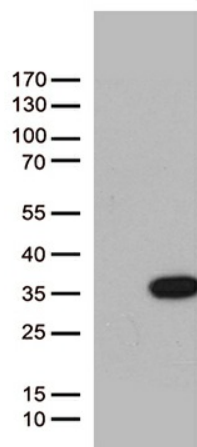
MW: 22 kDa

Gene Summary: The protein encoded by this gene belongs to the BCL-2 protein family. BCL-2 family members form hetero- or homodimers and act as anti- or pro-apoptotic regulators that are involved in a wide variety of cellular activities. The protein encoded by this gene contains a Bcl-2 homology domain 3 (BH3). It has been shown to interact with other members of the BCL-2 protein family and to act as an apoptotic activator. The expression of this gene can be induced by nerve growth factor (NGF), as well as by the forkhead transcription factor FKHR-L1, which suggests a role of this gene in neuronal and lymphocyte apoptosis. Transgenic studies of the mouse counterpart suggested that this gene functions as an essential initiator of apoptosis in thymocyte-negative selection. Several alternatively spliced transcript variants of this gene have been identified. [provided by RefSeq, Jun 2013]

Product images:



Circular map for RC207559



HEK293T cells were transfected with the pCMV6-ENTRY control (Cat# [PS100001], Left lane) or pCMV6-ENTRY BCL2L11 (Cat# RC207559, Right lane) cDNA for 48 hrs and lysed. Equivalent amounts of cell lysates (5 ug per lane) were separated by SDS-PAGE and immunoblotted with anti-BCL2L11 (Cat# [TA812441])(1:500).