

## Product datasheet for **RC207554**

### **KAT7 (NM\_007067) Human Tagged ORF Clone**

#### **Product data:**

Product Type:	Expression Plasmids
Product Name:	KAT7 (NM_007067) Human Tagged ORF Clone
Tag:	Myc-DDK
Symbol:	KAT7
Synonyms:	HBO1; HBOA; MYST2; ZC2HC7
Mammalian Cell Selection:	Neomycin
Vector:	pCMV6-Entry (PS100001)
E. coli Selection:	Kanamycin (25 ug/mL)



[View online »](#)

**ORF Nucleotide Sequence:**

>RC207554 ORF sequence  
 Red=Cloning site Blue=ORF Green=Tags(s)

TTTTGTAATACGACTCACTATAGGGCGGCCGGGAATTCGTCGACTGGATCCGGTACCGAGGAGATCTGCC  
 GCC**CGGATCGCC**

ATGCCCGAAGGAAGAGGAATGCAGGCAGTAGTTCAGATGGAACCGAAGATTCCGATTTTTCTACAGATC  
 TCGAGCACACAGACAGTTTCAGAAAGTGATGGCACATCCCGACGATCTGCTCGAGTCACCCGCTCCTCAGC  
 CAGGCTAAGCCAGAGTTCTCAAGATTCCAGTCTGTTTCGAAATCTGCAGTCTTTTGGCACTGAGGAGCCT  
 GCTTACTCTACCAGAAGAGTGACCCGTAGTCAGCAGCAGCTACCCAGTGACACCGAAAAATACCCTC  
 TTCGGCAGACTCGTTCATCTGGTTCAGAAACTGAGCAAGTGGTTGATTTTTTCAGATAGAGAACTAAAAA  
 TACAGCTGATCATGATGAGTCACCGCTCGAACTCCAAGTGGAAATGCGCCTTCTCTGAGTCTGACATA  
 GACATCTCCAGCCCAATGTATCTCAGATGAGAGCATTGCCAAGGACATGTCCCTGAAGGACTCAGGCA  
 GTGATCTCTCATCGCCCAAGCGCCGTCGTTCCATGAAAGCTACAACCTCAATATGAAGTGTCTAC  
 ACCAGGCTGTAACCTCTAGGACACCTACAGGAAAACATGAGAGACATTTCTCCATCTCAGGATGCCCA  
 CTGTATCATAACCTCTCAGCTGACGAATGCAAGGTGAGAGCACAGAGCCGGGATAAGCAGATAGAAGAAA  
 GGATGCTGTCTCACAGGCAAGATGACAACAACAGGCATGCAACCAGGCACCAGGCACCAACGGAGAGGCA  
 GCTTCGATATAAGGAAAAAGTGGCTGAACCTCAGGAAAGAAAAGAAATCTGGACTGAGCAAAGAACAGAAA  
 GAGAAATATGGAACACAGACAGACCTATGGGAACACACGGAAACCTCTTTAGAAAACCTGACAAGCG  
 AGTATGACTTGGATCTTTCCGAAGAGCACAAAGCCCGGGCTTCAGAGGATTTGGAGAAGTTAAGGCTGCA  
 AGGCCAAATCACAGAGGGAAGCAACATGATTAACAATTGCTTTTGGCCGCTATGAGCTTGATACCTGG  
 TACCATTCTCCATATCTGAAGAATATGCACGGCTGGGACGTCTATATGTGTGAATCTGTTTAAAAAT  
 ATATGAAGAGCCAAACGATACTCCGCGGCACATGGCCAAATGTGTGTGGAACACCCCACTGGTGATGA  
 GATATATCGCAAAGTTCAATCTGTGTTTGAAGTGGATGGCAAGAAAAACAAGATCTACTGCCAAAAC  
 CTGTGCCTGTTGGCCAACTTTTTCTGGACCACAAGACATTATATTATGATGTGGAGCCCTTCTGTTCT  
 ATGTTATGACAGAGGCGGACAACACTGGCTGTACCTGATTGGATATTTTTCTAAGGAAAAGAAATTCATT  
 CCTCAACTACAACGTCTCCTGTATCCTTACTATGCCTCAGTACATGAGACAGGGCTATGGCAAGATGCTT  
 ATTGATTTAGTTATTTGCTTTCCAAAGTCGAAGAAAAGTTGGCTCCCCAGAACGTCCACTCTCAGATC  
 TGGGGCTTATAAGCTATCGCAGTTACTGAAAAGAAGTACTTCTCCGCTACCTGCATAATTTTCAAGGCAA  
 AGAGATTTCTATCAAAGAAATCAGTCAGGAGACGGCTGTGAATCCTGTGGACATTGTCAGCACTCTGCAA  
 GCCCTTCAGATGCTCAAATACTGGAAGGAAAACACCTAGTTTTAAAGAGACAGGACCTGATTGATGAGT  
 GGATAGCCAAAGAGGCCAAAAGTCCAACCTCAATAAAAACCATGGATCCCAGCTGCTTAAATGGACCC  
 TCCAAGGGCACT

**ACGCGT**ACGCGGCCGCTCGAGCAGAACTCATCTCAGAAGAGGATCTGGCAGCAAATGATATCCTGGATT  
 ACAAGGATGACGACGATAAGGTTTAA

**Protein Sequence:**

>RC207554 protein sequence  
 Red=Cloning site Green=Tags(s)

MRRRKRNAGSSSDGTEDSDFSTDLEHTDSESDGTSRRSARVTRSSARLSQSSQDSSPVRNLQSFGTPEE  
 AYSTRRVTRSQQPTPVTPKKYPLRQTRSSGSETEQVVDVSDRETKNTADHDESPRPTGNAPSSEDI  
 DISSPNVSHDESIKDMSLKDSGSDLHRPKRRRFHESYNFMKCP TPGCNSLGH LTGKHERHFSISGCP  
 LYHNL SADECKVRAQSRDKQIEERMLSHRQDDNRRHATRHQAPTERQLRYKEKVAELRKKRNSGLSKEQK  
 EKMEHRQTYGNTREPLLENLTSEYDLDFRRAQARASEDLKLR LQGGITEGSNMIKTIAFGRYELDTW  
 YHSPYPPEYARLGRLYMCEFCLKYMKSQTLRRHMAKCVWKHPPGDEIYRKGSI SVFEVDGKKNKIYQCN  
 LCLLAKLFLDHKTLYYDVEPFLFYVMTEADNTGCHLIGYFSKEKNSFLNYNVSCILTMPQYMRQGYGKML  
 IDFSYLLSKVEEKVGSERPLSDLGLISYRSYWKVLLRRLHNFQGKEISIKEISQETAVNPVDIVSTLQ  
 ALQMLKYWKGHLLVLRQDLIDEWIAKEAKRSNSNKTMDPSCLKWTPPKGT

**TR**TRPLEQKLISEEDLAANDILDYKDDDDKV

**Chromatograms:** [https://cdn.origene.com/chromatograms/mk6136\\_b03.zip](https://cdn.origene.com/chromatograms/mk6136_b03.zip)  
**Restriction Sites:** SgfI-MluI  
**Cloning Scheme:**



**ACCN:** NM\_007067  
**ORF Size:** 1833 bp

**OTI Disclaimer:** The molecular sequence of this clone aligns with the gene accession number as a point of reference only. However, individual transcript sequences of the same gene can differ through naturally occurring variations (e.g. polymorphisms), each with its own valid existence. This clone is substantially in agreement with the reference, but a complete review of all prevailing variants is recommended prior to use. [More info](#)

**OTI Annotation:** This clone was engineered to express the complete ORF with an expression tag. Expression varies depending on the nature of the gene.

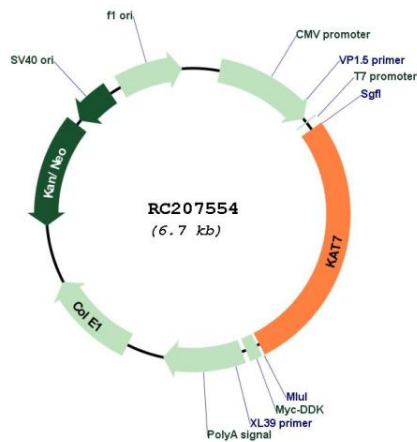
**Components:** The ORF clone is ion-exchange column purified and shipped in a 2D barcoded Matrix tube containing 10ug of transfection-ready, dried plasmid DNA (reconstitute with 100 ul of water).

- Reconstitution Method:**
1. Centrifuge at 5,000xg for 5min.
  2. Carefully open the tube and add 100ul of sterile water to dissolve the DNA.
  3. Close the tube and incubate for 10 minutes at room temperature.
  4. Briefly vortex the tube and then do a quick spin (less than 5000xg) to concentrate the liquid at the bottom.
  5. Store the suspended plasmid at -20°C. The DNA is stable for at least one year from date of shipping when stored at -20°C.

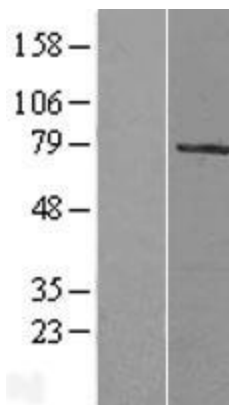
**RefSeq:** [NM\\_007067.3, NP\\_008998.1](#)  
**RefSeq Size:** 3664 bp  
**RefSeq ORF:** 1836 bp

**Locus ID:** 11143  
**UniProt ID:** [O95251](#)  
**Cytogenetics:** 17q21.33  
**Domains:** zf-C2HC, MOZ\_SAS, zf-C2H2  
**Protein Families:** Druggable Genome, Stem cell - Pluripotency, Transcription Factors  
**MW:** 70.6 kDa  
**Gene Summary:** The protein encoded by this gene is part of the multimeric HBO1 complex, which possesses histone H4-specific acetyltransferase activity. This activity is required for functional replication origins and is involved in transcriptional activation of some genes. In both cases, the acetylation of histone H4 helps unfold chromatin so that the DNA can be accessed and replicated or transcribed. [provided by RefSeq, Oct 2016]

### Product images:



Circular map for RC207554



Western blot validation of overexpression lysate (Cat# [LY402089]) using anti-DDK antibody (Cat# [TA50011-100]). Left: Cell lysates from untransfected HEK293T cells; Right: Cell lysates from HEK293T cells transfected with RC207554 using transfection reagent MegaTran 2.0 (Cat# [TT210002]).