

Product datasheet for RC207549

Centaurin alpha 1 (ADAP1) (NM_006869) Human Tagged ORF Clone

Product data:

Product Type:	Expression Plasmids
Product Name:	Centaurin alpha 1 (ADAP1) (NM_006869) Human Tagged ORF Clone
Tag:	Myc-DDK
Symbol:	Centaurin alpha 1
Synonyms:	CENTA1; GCS1L; p42IP4
Mammalian Cell Selection:	Neomycin
Vector:	pCMV6-Entry (PS100001)
E. coli Selection:	Kanamycin (25 ug/mL)
ORF Nucleotide Sequence:	>RC207549 representing NM_006869 Red=Cloning site Blue=ORF Green=Tags(s)

TTTTGTAATACGACTCACTATAGGGCGGCCGGAATTCGTCGACTGGATCCGGTACCGAGGAGATCTGCC
GCC**CGATCGCC**

ATGGCCAAGGAGCGCGCAGGGCGTCTGGAGCTGCTGCAGCGGCCGGGAACGCGCTGCGCGGACT
GCGGCGCCCGGATCCCGACTGGCCTCTACACTCTGGCGTCTTCATCTGCCTGAGCTGCTCGGGAAT
CCACCGGAATATCCCCAGGTGAGCAAGGTGAAGTCCGTCGCGCTGGACGCTGGGAGGAGCCCAAGT
GAGTTCATGGCCTCCACGGGAACGACGCCGAGAGCCAGGTTTGAGTCCAAAGTACCCTCTTACT
ACCGGCCACGCCCTCCGACTGCCAGCTCTTCGAGAGCAGTGGATCCGGCCAAGTACGAGCGACAGGA
GTTTCATCTACCGGAGAAGCAGGAGCCCTACTCGGACGGTACCGTGAGGGTTTTCTCTGGAAGCGTGGC
CGGGACAACGGGCAAGTTTTGAGCCGGAAGTTGTGCTGACAGAACGAGAGGGTGTCTGAAGTATTCA
ACAGAAATGATGCCAAGGAGCCCAAGGCCGTGATGAAGATCGAGCACCTGAACGCCACCTCCAGCCGGC
CAAGATCGGCCACCCACGGCCTGCAGGTCACTACCTGAAGGACAACAGCACCCGTAACATCTTCATC
TACCATGAGGACGGGAAGGAGATTGTGGACTGGTCAATGCACTCCGAGCTGCTCGCTTCCACTACCTGC
AGGTGGCATTCCAGGGGCCAGCGACGCAGATCTGGTGCCAAAGCTCTCCAGGAACCTGAAGGAAGG
CTACATGGAGAAGACGGGGCCCAAGCAAACGGAAGGCTTCGCGGAGGGGAAGTCTTCATTGGCAGCAAGGAGA
GTGGCTACACGGTGTGCATGGTTCCCGCCGTCACCCAGGGCCACCACTGGCCACATGGCATCACCAT
CGTCACGCCCCGACCGCAAGTTTCTGTTTGCCTGCGAGACGGAGTCCGACCAGAGGGAGTGGTGGCGGCC
TTCCAGAAGGCGGTGGACAGGCCATGCTGCCCGAGGATACGCAGTGGAGGCGCACTTCAAGCATAAAC
CT

ACGCGTACGCGGCCGCTCGAGCAGAAACTCATCTCAGAAGAGGATCTGGCAGCAAATGATATCCTGGATT
ACAAGGATGACGACGATAAGGTTTAA



[View online >](#)

Protein Sequence: >RC207549 representing NM_006869
Red=Cloning site Green=Tags(s)

MAKERRRAVLELLQRPGNARCADCGAPDPDWASYTLGVFICLSCSGIHRNIPQVSKVKSVRLEDAWEEAQV
 EFMASHGNDAAARARFESKVPFSFYRPTSDCQLLREQWIRAKYERQEF IYPEKQEPYSAGYREGFLWKR
 RDNGQFLSRKFVLTREGALKYFNNDAKEPKAVMKIEHLNATFQPAKIGHPHGLQVLYLKDNRNIF I
 YHEDGKEIVDFWALRAARFHYLQVAFPGASDADLVKLSRNYLKEGYMEKTGPKQTEGFRKRWF TMDDR
 RLMYFKDPLDAFARGEVFIGSKESGYTVLHGFPSTQGHHPHGITIVTPDRKFLFACETESDQREWVAA
 FQKAVDRPMLPQEYAVEAHFKHKP

TRTRPLEQKLISEEDLAANDILDYKDDDDKV

Chromatograms: https://cdn.origene.com/chromatograms/mg4334_a09.zip

Restriction Sites: SgfI-MluI

Cloning Scheme:



* The last codon before the Stop codon of the ORF

ACCN: NM_006869

ORF Size: 1122 bp

OTI Disclaimer: The molecular sequence of this clone aligns with the gene accession number as a point of reference only. However, individual transcript sequences of the same gene can differ through naturally occurring variations (e.g. polymorphisms), each with its own valid existence. This clone is substantially in agreement with the reference, but a complete review of all prevailing variants is recommended prior to use. [More info](#)

OTI Annotation: This clone was engineered to express the complete ORF with an expression tag. Expression varies depending on the nature of the gene.

Components: The ORF clone is ion-exchange column purified and shipped in a 2D barcoded Matrix tube containing 10ug of transfection-ready, dried plasmid DNA (reconstitute with 100 ul of water).

Reconstitution Method:

1. Centrifuge at 5,000xg for 5min.
2. Carefully open the tube and add 100ul of sterile water to dissolve the DNA.
3. Close the tube and incubate for 10 minutes at room temperature.
4. Briefly vortex the tube and then do a quick spin (less than 5000xg) to concentrate the liquid at the bottom.
5. Store the suspended plasmid at -20°C. The DNA is stable for at least one year from date of shipping when stored at -20°C.

RefSeq: [NM_006869.3](#)

RefSeq Size: 2378 bp

RefSeq ORF: 1125 bp

Locus ID: 11033

UniProt ID: [O75689](#)

Cytogenetics: 7p22.3

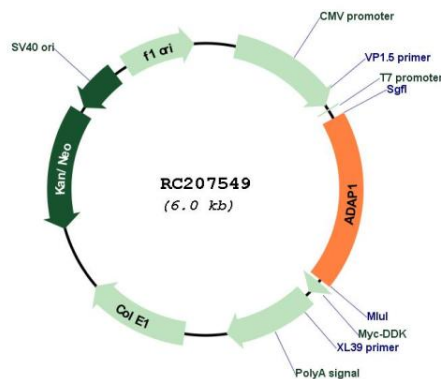
Domains: ArfGap, PH

Protein Families: Druggable Genome

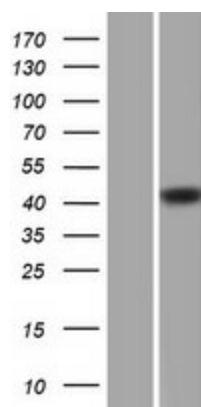
MW: 43.2 kDa

Gene Summary: GTPase-activating protein for the ADP ribosylation factor family (Probable). Binds phosphatidylinositol 3,4,5-trisphosphate (PtdInsP3) and inositol 1,3,4,5-tetrakisphosphate (InsP4).[UniProtKB/Swiss-Prot Function]

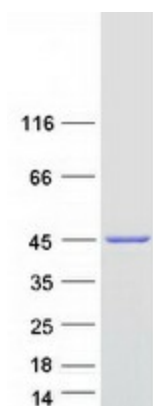
Product images:



Circular map for RC207549



Western blot validation of overexpression lysate (Cat# [LY416347]) using anti-DDK antibody (Cat# [TA50011-100]). Left: Cell lysates from untransfected HEK293T cells; Right: Cell lysates from HEK293T cells transfected with RC207549 using transfection reagent MegaTran 2.0 (Cat# [TT210002]).



Coomassie blue staining of purified ADAP1 protein (Cat# [TP307549]). The protein was produced from HEK293T cells transfected with ADAP1 cDNA clone (Cat# RC207549) using MegaTran 2.0 (Cat# [TT210002]).