

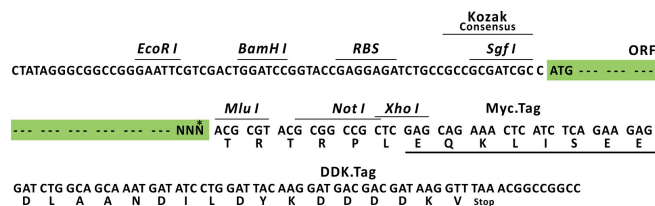
Product datasheet for RC207546L1

Calcium independent Phospholipase A2 (PLA2G6) (NM_003560) Human Tagged Lenti ORF Clone

Product data:

Product Type:	Expression Plasmids
Product Name:	Calcium independent Phospholipase A2 (PLA2G6) (NM_003560) Human Tagged Lenti ORF Clone
Tag:	Myc-DDK
Symbol:	Calcium independent Phospholipase A2
Synonyms:	Cal-PLA2; GVI; INAD1; iPLA2; IPLA2-VIA; iPLA2beta; NBIA2; NBIA2A; NBIA2B; PARK14; PLA2; PNPLA9
Mammalian Cell Selection:	None
Vector:	pLenti-C-Myc-DDK (PS100064)
E. coli Selection:	Chloramphenicol (34 ug/mL)
ORF Nucleotide Sequence:	The ORF insert of this clone is exactly the same as(RC207546).
Restriction Sites:	Sgfl-MluI
Cloning Scheme:	

Cloning sites used for ORF Shuttling:



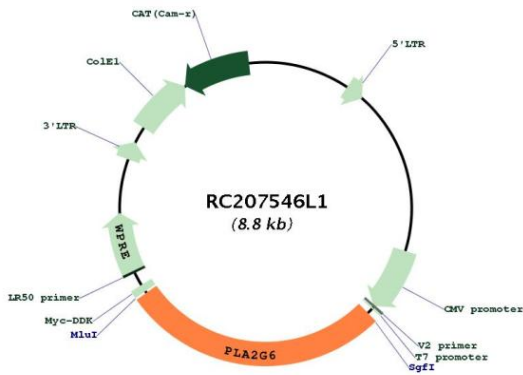
* The last codon before the Stop codon of the ORF.



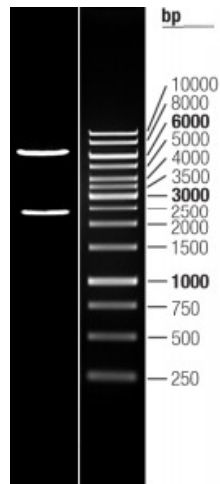
[View online »](#)

ACCN:	NM_003560
ORF Size:	2418 bp
OTI Disclaimer:	The molecular sequence of this clone aligns with the gene accession number as a point of reference only. However, individual transcript sequences of the same gene can differ through naturally occurring variations (e.g. polymorphisms), each with its own valid existence. This clone is substantially in agreement with the reference, but a complete review of all prevailing variants is recommended prior to use. More info
OTI Annotation:	This clone was engineered to express the complete ORF with an expression tag. Expression varies depending on the nature of the gene.
Components:	The ORF clone is ion-exchange column purified and shipped in a 2D barcoded Matrix tube containing 10ug of transfection-ready, dried plasmid DNA (reconstitute with 100 ul of water).
Reconstitution Method:	<ol style="list-style-type: none">1. Centrifuge at 5,000xg for 5min.2. Carefully open the tube and add 100ul of sterile water to dissolve the DNA.3. Close the tube and incubate for 10 minutes at room temperature.4. Briefly vortex the tube and then do a quick spin (less than 5000xg) to concentrate the liquid at the bottom.5. Store the suspended plasmid at -20°C. The DNA is stable for at least one year from date of shipping when stored at -20°C.
RefSeq:	NM_003560.2
RefSeq Size:	3239 bp
RefSeq ORF:	2421 bp
Locus ID:	8398
UniProt ID:	O60733
Cytogenetics:	22q13.1
Protein Pathways:	alpha-Linolenic acid metabolism, Arachidonic acid metabolism, Ether lipid metabolism, Fc epsilon RI signaling pathway, Fc gamma R-mediated phagocytosis, Glycerophospholipid metabolism, GnRH signaling pathway, Linoleic acid metabolism, Long-term depression, MAPK signaling pathway, Metabolic pathways, Vascular smooth muscle contraction, VEGF signaling pathway
MW:	89.7 kDa
Gene Summary:	The protein encoded by this gene is an A2 phospholipase, a class of enzyme that catalyzes the release of fatty acids from phospholipids. The encoded protein may play a role in phospholipid remodelling, arachidonic acid release, leukotriene and prostaglandin synthesis, fas-mediated apoptosis, and transmembrane ion flux in glucose-stimulated B-cells. Several transcript variants encoding multiple isoforms have been described, but the full-length nature of only three of them have been determined to date. [provided by RefSeq, Dec 2010]

Product images:



Circular map for RC207546L1



Double digestion of RC207546L1 using SgfI and MluI