

Product datasheet for **RC207545L1V**

DLX2 (NM_004405) Human Tagged ORF Clone Lentiviral Particle

Product data:

Product Type:	Lentiviral Particles
Product Name:	DLX2 (NM_004405) Human Tagged ORF Clone Lentiviral Particle
Symbol:	DLX2
Synonyms:	TES-1; TES1
Mammalian Cell Selection:	None
Vector:	pLenti-C-Myc-DDK (PS100064)
Tag:	Myc-DDK
ACCN:	NM_004405
ORF Size:	984 bp
ORF Nucleotide Sequence:	The ORF insert of this clone is exactly the same as(RC207545).
OTI Disclaimer:	The molecular sequence of this clone aligns with the gene accession number as a point of reference only. However, individual transcript sequences of the same gene can differ through naturally occurring variations (e.g. polymorphisms), each with its own valid existence. This clone is substantially in agreement with the reference, but a complete review of all prevailing variants is recommended prior to use. More info
OTI Annotation:	This clone was engineered to express the complete ORF with an expression tag. Expression varies depending on the nature of the gene.
RefSeq:	NM_004405.2
RefSeq Size:	2308 bp
RefSeq ORF:	987 bp
Locus ID:	1746
UniProt ID:	Q07687
Cytogenetics:	2q31.1
Protein Families:	ES Cell Differentiation/IPS, Stem cell relevant signaling - TGFb/BMP signaling pathway, Transcription Factors

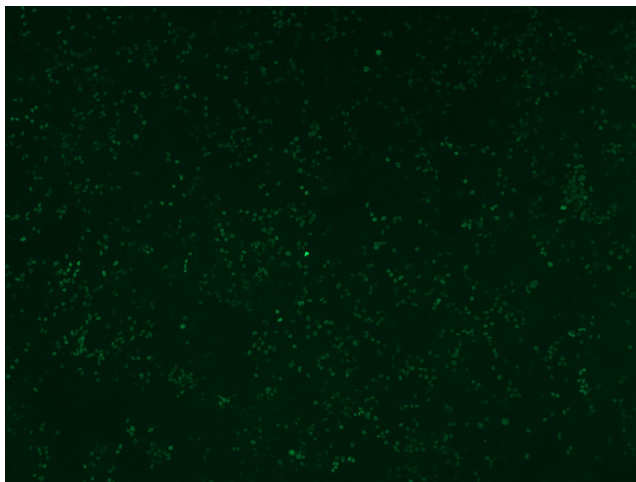


[View online »](#)

MW: 34.2 kDa

Gene Summary: Many vertebrate homeo box-containing genes have been identified on the basis of their sequence similarity with Drosophila developmental genes. Members of the Dlx gene family contain a homeobox that is related to that of Distal-less (Dll), a gene expressed in the head and limbs of the developing fruit fly. The Distal-less (Dlx) family of genes comprises at least 6 different members, DLX1-DLX6. The DLX proteins are postulated to play a role in forebrain and craniofacial development. This gene is located in a tail-to-tail configuration with another member of the gene family on the long arm of chromosome 2. [provided by RefSeq, Jul 2008]

Product images:



[RC207545L1] was used to prepare Lentiviral particles using [TR30037] packaging kit. HEK293T cells were transduced with RC207545L1V particle to overexpress human DLX2-Myc-DDK fusion protein.