

## Product datasheet for RC207545

### DLX2 (NM\_004405) Human Tagged ORF Clone

#### Product data:

Product Type:	Expression Plasmids
Product Name:	DLX2 (NM_004405) Human Tagged ORF Clone
Tag:	Myc-DDK
Symbol:	DLX2
Synonyms:	TES-1; TES1
Mammalian Cell Selection:	Neomycin
Vector:	pCMV6-Entry (PS100001)
E. coli Selection:	Kanamycin (25 ug/mL)
ORF Nucleotide Sequence:	>RC207545 ORF sequence Red=Cloning site Blue=ORF Green=Tags(s)

TTTTGTAATACGACTCACTATAGGGCGGCCGGAATTCGTCGACTGGATCCGGTACCGAGGAGATCTGCC  
GCC**CGATCGCC**

ATGACTGGAGTCTTTGACAGTCTAGTGGCTGATATGCACTCGACCCAGATCGCCGCTCCAGCACGTACC  
ACCAGCACAGCAGCCCCGAGCGGGCGGCCGCGCCCGGGTGGCAACAGCAGCAGCAGCAGCAGCCT  
CCACAAGCCCCAGGAGTCGCCACCCCTCCGGTGTCCACCGCCACCGACAGCAGCTACTACCAACCAG  
CAGCACCCGGCGGGCGGGCGGGCGGGGGCTCGCCCTACGCGCACATGGGTTCTACCAGTACCAAG  
CCAGCGGCTCAACAACGTCCCTTACTCCGCAAGAGCAGCTATGACCTGGGCTACACCGCCGCTACAC  
CTCTACGCTCCCTATGGAACAGTTTCGTCGCCAGCCAACAACGAGCCTGAGAAGGAGGACCTTGAGCCT  
GAAATTCGGATAGTGAACGGGAAGCCAAAGAAAGTCCGGAACCCCGCACCATCTACTCCAGTTTCCAGC  
TGGCGGCTCTTACAGCGCGTTCCTCAAAAGACTCAATACTTGGCCTTGGCGGAGCGAGCCGAGCTGGCGGC  
CTCTCTGGGCTCACCCAGACTCAGGTCAAATCTGGTTCAGAACCGCCGGTCCAAGTTCAAGAAGATG  
TGGAAAAGTGGTGAATCCCCTCGGAGCAGCACCTGGGGCCAGCGCTTCTCACCTTGTGCTTCGCGGC  
CAGTCTCAGCGCCGCGCTCCTGGGACTTGGTGTGCCGAGCGGATGGCGGGCGGGTGGTCCGGGCGAG  
TGGCGGCAGCGGGCGGGCAGCTCGGGCTCCAGCCGAGCAGCGCGGCCCTCGGCTTTTCTGGGCAACTAC  
CCCTGGTACCACAGACCTCGGGATCCGCTCACACCTGCAGGCCACGGCGCCGCTGCTGCACCCCACTC  
AGACCCCGCAGCCGCATCACCCACCACCATCACGGCGGGGGCGCCCGGTGAGCGGGGGACGAT  
TTTC

**ACGCGT**ACGCGGGCGCTCGAGCAGAACTCATCTCAGAAGAGGATCTGGCAGCAATGATATCCTGGATT  
ACAAGGATGACGACGATAAGGTTTAA



[View online »](#)

**Protein Sequence:** >RC207545 protein sequence  
Red=Cloning site Green=Tags(s)

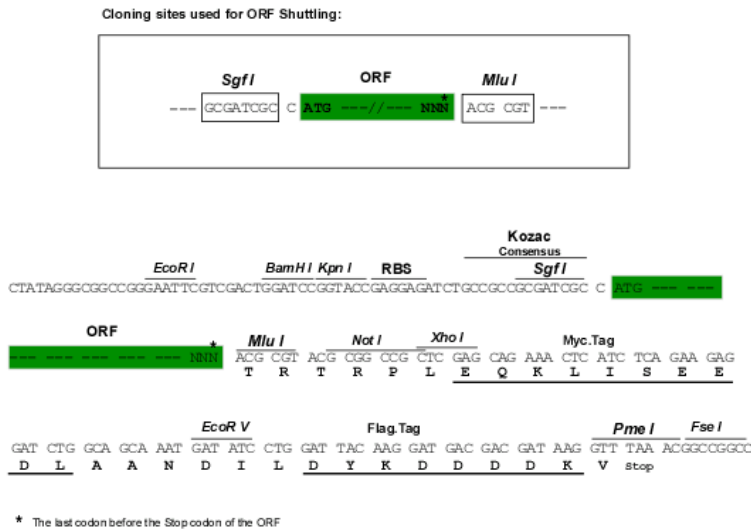
MTGVFDSLVDLMHSTQIAASSTYHQHQPPSSGGGAGPGGNSSSSSSLHKPQESPTLPVSTATDSSSYTNQ  
 QHPAGGGGGGGSPYAHMGSYQYQASGLNNVPYSKSSYDLGYTAAYSYAPYGTSSSPANNEPEKEDLEP  
 EIRIVNGKPKKVRKPRTIYSSFQLAALQRRFQKTQYLALPERAELAASLGLTQTQVKIWFQNRRSKFKKM  
 WKSGEIPSEQHPGASAPPCASPPVSAPASWDFGVPQRMAGGGGPGSGGSGAGSSGSSPSSAASAF LGNY  
 PWYHQTSGSASHLQATAPLLHPTQTPQH HHHHHHHGGGGAPVSAGTIF

TRTRPLEQKLISEEDLAANDILDYKDDDDKV

**Chromatograms:** [https://cdn.origene.com/chromatograms/mk6021\\_f09.zip](https://cdn.origene.com/chromatograms/mk6021_f09.zip)

**Restriction Sites:** SgfI-MluI

**Cloning Scheme:**



**ACCN:** NM\_004405

**ORF Size:** 984 bp

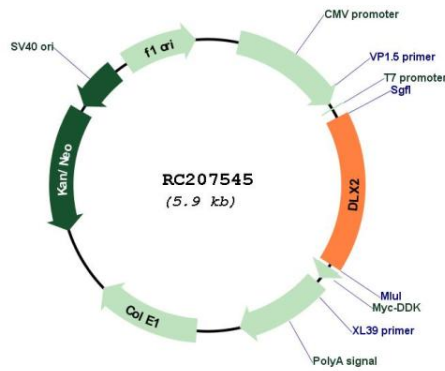
**OTI Disclaimer:** The molecular sequence of this clone aligns with the gene accession number as a point of reference only. However, individual transcript sequences of the same gene can differ through naturally occurring variations (e.g. polymorphisms), each with its own valid existence. This clone is substantially in agreement with the reference, but a complete review of all prevailing variants is recommended prior to use. [More info](#)

**OTI Annotation:** This clone was engineered to express the complete ORF with an expression tag. Expression varies depending on the nature of the gene.

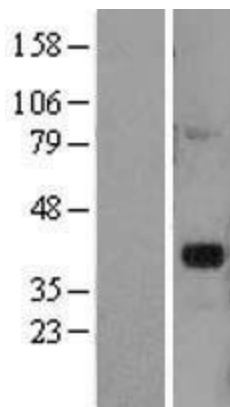
**Components:** The ORF clone is ion-exchange column purified and shipped in a 2D barcoded Matrix tube containing 10ug of transfection-ready, dried plasmid DNA (reconstitute with 100 ul of water).

<b>Reconstitution Method:</b>	<ol style="list-style-type: none"><li>1. Centrifuge at 5,000xg for 5min.</li><li>2. Carefully open the tube and add 100ul of sterile water to dissolve the DNA.</li><li>3. Close the tube and incubate for 10 minutes at room temperature.</li><li>4. Briefly vortex the tube and then do a quick spin (less than 5000xg) to concentrate the liquid at the bottom.</li><li>5. Store the suspended plasmid at -20°C. The DNA is stable for at least one year from date of shipping when stored at -20°C.</li></ol>
<b>Note:</b>	Plasmids are not sterile. For experiments where strict sterility is required, filtration with 0.22um filter is required.
<b>RefSeq:</b>	<a href="#">NM_004405.4</a>
<b>RefSeq Size:</b>	2308 bp
<b>RefSeq ORF:</b>	987 bp
<b>Locus ID:</b>	1746
<b>UniProt ID:</b>	<a href="#">Q07687</a>
<b>Cytogenetics:</b>	2q31.1
<b>Protein Families:</b>	ES Cell Differentiation/IPS, Stem cell relevant signaling - TGFb/BMP signaling pathway, Transcription Factors
<b>MW:</b>	34.2 kDa
<b>Gene Summary:</b>	Many vertebrate homeo box-containing genes have been identified on the basis of their sequence similarity with Drosophila developmental genes. Members of the Dlx gene family contain a homeobox that is related to that of Distal-less (Dll), a gene expressed in the head and limbs of the developing fruit fly. The Distal-less (Dlx) family of genes comprises at least 6 different members, DLX1-DLX6. The DLX proteins are postulated to play a role in forebrain and craniofacial development. This gene is located in a tail-to-tail configuration with another member of the gene family on the long arm of chromosome 2. [provided by RefSeq, Jul 2008]

Product images:



Circular map for RC207545



Western blot validation of overexpression lysate (Cat# [LY418012]) using anti-DDK antibody (Cat# [TA50011-100]). Left: Cell lysates from untransfected HEK293T cells; Right: Cell lysates from HEK293T cells transfected with RC207545 using transfection reagent MegaTran 2.0 (Cat# [TT210002]).