

Product datasheet for **RC207543**

Host cell factor C2 (HCFC2) (NM_013320) Human Tagged ORF Clone

Product data:

Product Type:	Expression Plasmids
Product Name:	Host cell factor C2 (HCFC2) (NM_013320) Human Tagged ORF Clone
Tag:	Myc-DDK
Symbol:	Host cell factor C2
Synonyms:	HCF-2; HCF2
Mammalian Cell Selection:	Neomycin
Vector:	pCMV6-Entry (PS100001)
E. coli Selection:	Kanamycin (25 ug/mL)



[View online »](#)

**ORF Nucleotide
Sequence:**

>RC207543 ORF sequence
 Red=Cloning site Blue=ORF Green=Tags(s)

TTTTGTAATACGACTCACTATAGGGCGGCCGGAATTCGTCGACTGGATCCGGTACCGAGGAGATCTGCC
 GCC**CGGATCGCC**

ATGGCGGCTCCCAGCCTCCTCAACTGGAGCGAGTTTCTCCTTCACGGGCGCGTCCCCGCGCCCGG
 ACGGACACCGAGCGGTGCCATCCGGGAGCTGATGATCATCTTTGGAGGGGAAAATGAGGCATCCGCGGA
 TGAGCTGCACGTCTACAACACGGCTACGAATCAGTGGTTCTGCCAGCTGTTAGAGGAGATATCCCTCCA
 GGCTGTGCTGCCATGGATTTGTCTGTGATGGTACCAGAATATTAGTATTTGGGGAAATGGTTGAATATG
 GAAGATACAGCAATGAGTTATATGAGTTACAAGCAAGTCGTTGGTTATGGAAAAAGTGAACCCCATCC
 CCCTCCTTCTGGTTTACCTCCTGTCTCGCTGGACATAGCTTCTCTTATATGGTAACAAATGCTAT
 TTGTTTGGTGGCCTGGCAAACGAAAGCGAAGATCAAACAATAATGTTCCAGATATTTAAATGATTTTT
 ATGAGTTGGAGCTACAGCATGGCTCTGGTGTGGGTTGGAGCATTCCAGTGACTAAAGGGGTTGTGCC
 TTCTCCAAGAGAATCCCACACAGCTGTTATATATTGCAAAAAGATTCTGGAAGTCTAAAATGTATGTT
 TTTGGTGAATGTGTGGTCTCGCTGGATGACCTATGGCAGCTTGACTTAGAAAATATGTCATGGTCAA
 AACCAGAACTAAAGGGACAGTGCCACTCCACGAAGCCTTCATACAGCCAGTGTATAGAAAACAGAT
 GTACATTTTTGGTGGATGGGTCCACATAAGGGGGAAAATACTGAGACTTCACCTCATGATTGTGAATGG
 AGATGTACCAGTTCATTTCTTACCTAAATCTGGATACAACAGAGTGGACCACCCTAGTATCAGATTCTC
 AGGAAGATAAAAAAATCAAGACCAAGACCAAGAGCTGGCCACTGTGCTGTTGCAATCGGCACTCGATT
 GTATTTTTGGAGTGAAGAGATGGCTACAAAAAGCACTGAATAGTCAAGTTTGTGCAAGGATCTTTGG
 TATCTTGATACTGAGAAACCACCGCACCATCTCAAGTACAGCTGATCAAAGCCACTACCAACTCCTTTC
 ATGTCAAGTGGGATGAAGTGTCTACAGTTGAGGGCTATCTTTTGCAGTTGAGTACAGACTGCCATACCA
 AGCTGCATCATCAGATTCTTCAGCAGCACAAATATGCAAGGAGTCAGGATGGACCCTCACAGACAAGGC
 AGTAATAACATCGTTCTAACAGTATCAATGATACAATAAACAGCACAAAACTGAACAGCCAGCCACAA
 AAGAACTTCAATGAAAAACAAACCAGACTTTAAAGCACTGACGGATTCTAATGCCATTTTATATCCATC
 TTTGGCATCAAATGCTTCTAATCATAATAGTCATGTGGTGGATATGCTAAGGAAAAATGAAGTCTCAC
 ACTTCAGCAAATGTAGGTGTTCTAAGTAGTTGCCTGGATGTAAGAACAGTAATTCCTGAAACATCTGTAT
 CCAGTACTGTTTCCAGCACACAACTATGGTAACCCAGCAGACCATTAAGTGAATCATCCAGTACAAA
 TGGGGCAGTTGTTAAAGATGAAACTTCACTAACAACTTCAGTACCAAATCTGAAGTTGATGAAACATAT
 GCACTGCCTGCAACGAAGATCAGCCGTGTAGAGACACATGCTACAGCAACGCCGTTTTCTAAAGAGACTC
 TTCAAATCCAGTGGCCACAGTAAAGCGGGAGAACGACAATGGTGTGATGTGGGAATTTTTAAAAATAA
 TACAGCTTTGGTGGAGCCAGTTTTATTTGCTGCCAAAAGGGAAGCAAGCATCTCAAAGGTAGGAAATGCA
 GATGTACTGACTACAGCTTGTCTAAGAAAACAGATCTTGTTCAGGCACAGGATACAGATTCAGGGTTG
 CTGCAATCAATGGTTGTGGGATAGGTCCTTTCAGCAAAATCAGTGAATTTAAACTTGTATTCTGGTTT
 TCCTGGAGCTCCTTCTGCAGTCAGAATTTCAAAGAATGTTGAAGGTATCCACCTTTCCTGGGAACCTCCA
 ACCTCACCTTCTGAAAATTTTTGGAATATTCAGCCTACTTGGCTATCCGCACAGCACAGATACAAGATA
 ATCCAAGTCAACTGTGTTTCATGAGGATTTATTGGTCTTAAGACATCATGTATAGTAACTGCTGGGCA
 ACTTGCAAATGCACATATTGATTATACATCCAGGCCTGCCATTGTGTTCCAGGATATCAGCAAAGAATGAA
 AAGGGATATGGACCAGCTACACAAGTTCGGTGGCTTCAAGGTAACAATAAGAAAGCACCTTTAAAT

ACGCGTACGCGGCCGCTCGAGCAGAACTCATCTCAGAAGAGGATCTGGCAGCAAATGATATCCTGGATT
 ACAAGGATGACGACGATAAGGTTTAA

Protein Sequence: >RC207543 protein sequence
Red=Cloning site Green=Tags(s)

MAAPSLLNWRRVSSFTGPVPRARHGHRVAIRELMIIFGGGNEGIADELHVYNTATNQWFLPAVRGDIPP
GCAAHGFVCDGTRILVFGGMVEYGRYSNELYELQASRWLWKKVKPHPPPSGLPPCPRLGHSFSLYGKCY
LFGGLANESEDSNNNVPRYLNDFYELQLHGSGVVGWSIPVTKGVVPSPRESHTAVIYCKKDSGSPKMYV
FGMCGARLDDLWQLDLETMSWSKPETKGTVPLPRSLHTASVIGNKMYIFGGWVPHKGENTETSPHDCEW
RCTSSFYLNLDTEWTTLVSDSQEDKNSRPRPRAGHCAVAIGTRLYFWSGRDGYKKALNSQVCKDLW
YLDTEKPPAPSQVQLIKATTNSFHVKWDEVSTVEGYLLQLSTDLPYQAASSDSSAAPNMQGV RMDPHRQG
SNNIVPNSINDTINSTKTEQPATKETS MKNKPDFKAL TDSNAILYPSLASNASNHSHVVDMLRKNEGPH
TSANVGVLSSCLDVRTVIPETSVSSTVSSTQTMVTQQTIKTESSSTNGAVVKDETSLTTFSTKSEVDETY
ALPATKISR VETHATATPFSKETPSNPVATVKAGERQWCDVGIFKNNTALVSQFYLLPKGKQSIKVGNA
DVPDYSLLKKQDLVPGTGYRFRVAANGCGIGPFKISEFKTCIPGFGAPSAVRISK NVEGIHLSWEPP
TSPSGNILEYSAYLAIRTAQIQDNPSQLVMRIYCGLKTS CIVTAGQLANAHIDYTSRPAIVFRISAKNE
KGYGPATQVRWLQGNKKAPLN

TRTRPLEQKLI SEEDLAANDILDYKDDDDKV

Chromatograms: https://cdn.origene.com/chromatograms/mk6517_b08.zip

Restriction Sites: Sgfl-Mlul

Cloning Scheme:


ACCN: NM_013320

ORF Size: 2376 bp

OTI Disclaimer: The molecular sequence of this clone aligns with the gene accession number as a point of reference only. However, individual transcript sequences of the same gene can differ through naturally occurring variations (e.g. polymorphisms), each with its own valid existence. This clone is substantially in agreement with the reference, but a complete review of all prevailing variants is recommended prior to use. [More info](#)

OTI Annotation: This clone was engineered to express the complete ORF with an expression tag. Expression varies depending on the nature of the gene.

Components: The ORF clone is ion-exchange column purified and shipped in a 2D barcoded Matrix tube containing 10ug of transfection-ready, dried plasmid DNA (reconstitute with 100 ul of water).

Reconstitution Method:

1. Centrifuge at 5,000xg for 5min.
2. Carefully open the tube and add 100ul of sterile water to dissolve the DNA.
3. Close the tube and incubate for 10 minutes at room temperature.
4. Briefly vortex the tube and then do a quick spin (less than 5000xg) to concentrate the liquid at the bottom.
5. Store the suspended plasmid at -20°C. The DNA is stable for at least one year from date of shipping when stored at -20°C.

RefSeq: [NM_013320.3](#)

RefSeq Size: 5743 bp

RefSeq ORF: 2379 bp

Locus ID: 29915

UniProt ID: [Q9Y5Z7](#)

Cytogenetics: 12q23.3

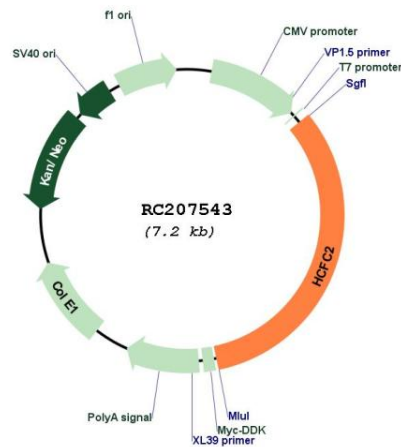
Domains: FN3, Kelch

Protein Families: Transcription Factors

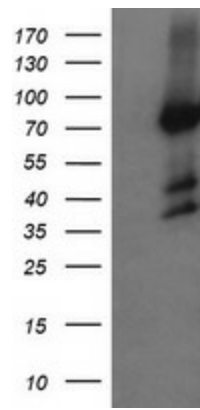
MW: 86.8 kDa

Gene Summary: This gene encodes one of two proteins which interact with VP16, a herpes simplex virus protein that initiates virus infection. Both the encoded protein and the original Herpes host cell factor interact with VP16 through a beta-propeller domain. The original Herpes host cell factor, however, is effective at initiating viral infection while the encoded protein is not. Transcripts of varying length due to alternative polyadenylation signals have been described. [provided by RefSeq, Jul 2008]

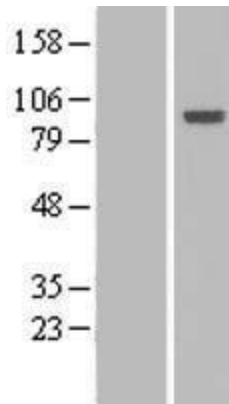
Product images:



Circular map for RC207543



HEK293T cells were transfected with the pCMV6-ENTRY control (Cat# [PS100001], Left lane) or pCMV6-ENTRY HCFC2 (Cat# RC207543, Right lane) cDNA for 48 hrs and lysed. Equivalent amounts of cell lysates (5 ug per lane) were separated by SDS-PAGE and immunoblotted with anti-HCFC2 (Cat# [TA505235]). Positive lysates [LY415672] (100ug) and [LC415672] (20ug) can be purchased separately from OriGene.



Western blot validation of overexpression lysate (Cat# [LY415672]) using anti-DDK antibody (Cat# [TA50011-100]). Left: Cell lysates from untransfected HEK293T cells; Right: Cell lysates from HEK293T cells transfected with RC207543 using transfection reagent MegaTran 2.0 (Cat# [TT210002]).