

## Product datasheet for **RC207536**

### **CESK1 (CCT8L2) (NM\_014406) Human Tagged ORF Clone**

#### **Product data:**

Product Type:	Expression Plasmids
Product Name:	CESK1 (CCT8L2) (NM_014406) Human Tagged ORF Clone
Tag:	Myc-DDK
Symbol:	CESK1
Synonyms:	CESK1
Mammalian Cell Selection:	Neomycin
Vector:	pCMV6-Entry (PS100001)
E. coli Selection:	Kanamycin (25 ug/mL)



[View online »](#)

**ORF Nucleotide Sequence:**

>RC207536 ORF sequence  
 Red=Cloning site Blue=ORF Green=Tags(s)

TTTTGTAATACGACTCACTATAGGGCGGCCGGGAATTCGTCGACTGGATCCGGTACCGAGGAGATCTGCC  
 GCC**CGGATCGCC**

ATGGACAGCACAGTCCCTTCAGCCCTGGAGCTGCCCCAGCGGCTGGCACTGAACCCAAGGGAGAGCCCGA  
 GGAGTCCAGAAGAGGAGGAGCCCCACCTGCTGAGCAGCTTGCTGCACTCCAGACCTGGCCAGTGCAT  
 CCGGCCTTGCTATGGCCCCACGGCCGGCAGAAGTTCCTGGTGACCATGAAAGGAGAAACAGTGTGCACG  
 GGGTGTGCCACTGCCATCCTCAGGGCCCTGGAGCTGGAGCACCCAGCAGCATGGCTCCTCCGGGAAGCAG  
 GACAAACCCAGGCAGAGAATAGTGGGGACGGCACAGCCTTCGTGGTTCTGCTGACGGAAGCCTTGTGGA  
 ACAGGCAGAGCAGCTGCTGAAGGCTGGCCTGCCTCGCCCGCAGCTCCGGGAGGCCACGCCACGGCCACT  
 GCAGAGTCTGGCCACACTGCCCTCCCTGGCCATCCAATCTCTGGGGCCTTTGGAAGATCCATCCTGGG  
 CCCTCCATTCTGTGATGAATACCCACACCCTGTCCCCATGGACCACTTGACCAAGCTGGTGGCCACGC  
 CTGCTGGGCTATCAAGGAACTAGACGGCAGCTTCAAGCCTGAGCGTGTGGGGTGTGCGCGCTGCCCGGG  
 GGGACACTGGAGGATTCCTGCCTCCTCCCGGGTTAGCAATATCTGGGAAGCTCTGTGGGCAATGGCCA  
 CAGTGTTAAGTGGTGCCAGGGTGGCTCTTTGCTTGCCCTTTGGTCTGCCATCCAATGCACCAGC  
 AACGGCCCGTCTTTCTAGTCTGCTGATCTAGCTCAATTTAGTAAAGGAAGCGATCAATTAAGAAAAG  
 CAAGTAGGCCAGCTAGCAGCTGCAGGAATTAATGTGGCAGTGGTGTGGGGGAGGTCGACGAGGAGACCC  
 TCACACTGGCGGACAAGTATGGCATCGTGGTGAATCAAGCTAGGCTTGGATGGAGATCATTTACCTGAG  
 TGAGGTGTGGACACACCTCTGCTGCCTCGTCTGCTCCCTCCCCAGAGGCCAGGCAAGTCCAGAGGGTT  
 TACAGGCAGGAGCTGGGAGATGGTTTGGCTGTGGTATTTGAATGGGAATGTACAGGCACACCTGCCCTCA  
 CTGTGGTTCTCAGGGGAGCCACCACCGGGCTGCGGAGTGCAGAGCAGGCCGTACCCACGGCATTGA  
 TGCCTATTTCCAGCTATGTCAAGATCCCAGACTGATTCCAGGAGCTGGGGCCACAGAAATGGCTTTGGCA  
 AAAATGCTTTCTGATAAAGGAAGCAGATTGGAAGGGCCAGTGGGCTGCATTCTAGCATTGCTGGG  
 CCCTGAAGTATCTTCTAAAACCTTTGGCAGAGAATGCAGGCTTAGCTGTCTCAGACGTGATGGCAGAAAT  
 GAGTGGAGTGCACCAAGGTGGGAACCTCCTAATGGGTGTGGAACTGAAGGGATAATAAATGTGGCCAG  
 GAAGGGGTGTGGGACACCCTAATAGTCAAAGCCCAAGGATTTGAGCAGTGGCTGAGGTGGTCTACAGC  
 TCGTACTGTAGATGAAATCGTAGTGGCAAGAAAAGTCCACACATCAGGAGATCTGGAATCCTGACTC  
 CAAGAAGACAAAACACCCACCTCCTGTGAAAACAAAAAATCCTTGATTGAATAAC

**ACGCGT**ACGCGGCCGCTCGAGCAGAAACTCATCTCAGAAGAGGATCTGGCAGCAAATGATATCCTGGATT  
 ACAAGGATGACGACGATAAGGTTTAA

**Protein Sequence:**

>RC207536 protein sequence  
 Red=Cloning site Green=Tags(s)

MDSTVPSALELPQRLALNPRESRSPREEEPHLLSSLAAVQTLASVIRPCYGPGRQKFLVTMKGETVCT  
 GCATAILRALELEHPAAWLLREAGQTQAENSGDGTAFVLLTEALLEQAEQLLKAGLPRPQLREAYATAT  
 AEVLATLPSLAIQSLGPLEDPSWALHSMNHTLSPMDHLTKLVAHACWAIKELDGSFKPERVGVICALPG  
 GTLEDSCLLPGLAISGKLCGQMATVLSGARVALFACPFPAHPNAPATARLSSPADLAQFSKGSQDQLEK  
 QVGQLAAAGINAVVVLGEVDEETLTLADKYGIVVIQARSWMEIIYLSEVLDTPLLPRLPPQRPQKQRV  
 YRQELGDGLAVVFEWECTGTPALTVVLRGATTQGLRSAEQAVYHGIDAYFQLCQDPRLIPGAGATEMALA  
 KMLSDKGSRLGSPGPAFLAFWALKYLPKTLAENAGLAVSDVMAEMSGVHQGGNLLMGVGTETGINVAQ  
 EGVWDTLIVKAQGFRAVAEVLQLVTVDEIVVAKKSPHQEIWNPDSSKTKKHPPPVPETKKILGLNN

**TR**TRPLEQKLISEEDLAANDILDYKDDDDKV

**Chromatograms:**

[https://cdn.origene.com/chromatograms/mk6335\\_b12.zip](https://cdn.origene.com/chromatograms/mk6335_b12.zip)

**Restriction Sites:**

Sgfl-Mlul

**Cloning Scheme:**


**ACCN:** NM\_014406

**ORF Size:** 1671 bp

**OTI Disclaimer:** The molecular sequence of this clone aligns with the gene accession number as a point of reference only. However, individual transcript sequences of the same gene can differ through naturally occurring variations (e.g. polymorphisms), each with its own valid existence. This clone is substantially in agreement with the reference, but a complete review of all prevailing variants is recommended prior to use. [More info](#)

**OTI Annotation:** This clone was engineered to express the complete ORF with an expression tag. Expression varies depending on the nature of the gene.

**Components:** The ORF clone is ion-exchange column purified and shipped in a 2D barcoded Matrix tube containing 10ug of transfection-ready, dried plasmid DNA (reconstitute with 100 ul of water).

- Reconstitution Method:**
1. Centrifuge at 5,000xg for 5min.
  2. Carefully open the tube and add 100ul of sterile water to dissolve the DNA.
  3. Close the tube and incubate for 10 minutes at room temperature.
  4. Briefly vortex the tube and then do a quick spin (less than 5000xg) to concentrate the liquid at the bottom.
  5. Store the suspended plasmid at -20°C. The DNA is stable for at least one year from date of shipping when stored at -20°C.

**RefSeq:** [NM\\_014406.3](#)

**RefSeq Size:** 2065 bp

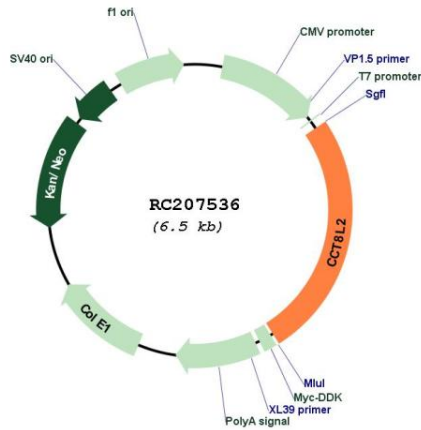
**RefSeq ORF:** 1674 bp

**Locus ID:** 150160

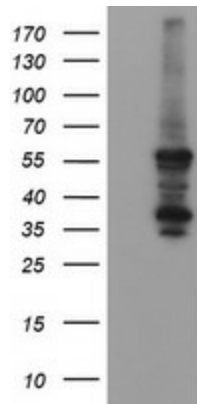
**UniProt ID:** [Q96SF2](#)

**Cytogenetics:** 22q11.1  
**MW:** 59.4 kDa  
**Gene Summary:** Possible molecular chaperone; assists the folding of proteins upon ATP hydrolysis. [UniProtKB/Swiss-Prot Function]

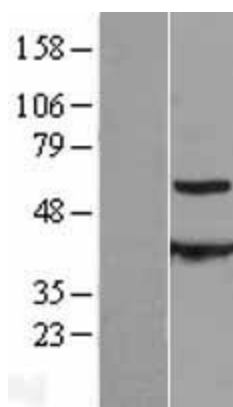
**Product images:**



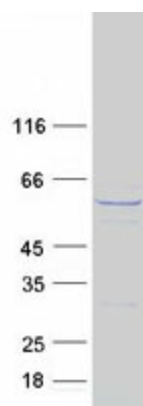
Circular map for RC207536



HEK293T cells were transfected with the pCMV6-ENTRY control (Cat# [PS100001], Left lane) or pCMV6-ENTRY CCT8L2 (Cat# RC207536, Right lane) cDNA for 48 hrs and lysed. Equivalent amounts of cell lysates (5 ug per lane) were separated by SDS-PAGE and immunoblotted with anti-CCT8L2 (Cat# [TA505334]). Positive lysates [LY415299] (100ug) and [LC415299] (20ug) can be purchased separately from OriGene.



Western blot validation of overexpression lysate (Cat# [LY415299]) using anti-DDK antibody (Cat# [TA50011-100]). Left: Cell lysates from untransfected HEK293T cells; Right: Cell lysates from HEK293T cells transfected with RC207536 using transfection reagent MegaTran 2.0 (Cat# [TT210002]).



Coomassie blue staining of purified CCT8L2 protein (Cat# [TP307536]). The protein was produced from HEK293T cells transfected with CCT8L2 cDNA clone (Cat# RC207536) using MegaTran 2.0 (Cat# [TT210002]).