

Product datasheet for **RC207532**

ARMC8 (NM_015396) Human Tagged ORF Clone

Product data:

Product Type:	Expression Plasmids
Product Name:	ARMC8 (NM_015396) Human Tagged ORF Clone
Tag:	Myc-DDK
Symbol:	ARMC8
Synonyms:	GID5; HSPC056; S863-2; VID28
Mammalian Cell Selection:	Neomycin
Vector:	pCMV6-Entry (PS100001)
E. coli Selection:	Kanamycin (25 ug/mL)



[View online »](#)

ORF Nucleotide
Sequence:

>RC207532 ORF sequence
Red=Cloning site Blue=ORF Green=Tags(s)

TTTTGTAATACGACTCACTATAGGGCGGCCGGAATTCGTCGACTGGATCCGGTACCGAGGAGATCTGCC
GCCGCGATCGCC

ATGGAAGTAACAGCTAGCAGTCGCCACTATGTTGACAGGCTATTTGACCCTGATCCCCAGAAAGTTCTAC
AAGGTGTCATAGACATGAAAAATGCTGTAATTGGAAACAACAAGCAGAAAGCCAATCTCATTGTTTTAGG
AGCTGTTCCAAGATTGTTGACTTGTCTCAGCAAGAAACCTCAAGCACAGAGCTGAAAACTGAATGTGCA
GTGGTGTGGGAAGTCTTGCTATGGGACTGAAAAACAATGTCAAGTCTCTACTGGACTGCCATATTATCC
CTGCCATTATTGCAAGGACTACTGTCCCCAGACCTGAAGTTTATTGAAGCTTGCCTCCGATGCCTGCGTAC
CATCTTCACCAGTCTGTCACTCCAGAGGAGCTACTGTATACAGATGCCACAGTGATACCACACCTCATG
GCACTGCTTAGCAGGTCCCGCTATACCCAGGAGTACATCTGTGAGATCTTCTCACACTGTGTAAGGGC
CAGATCATCAAACAATTTTATTTAACACGGTGCAGTTTCAAGATATTGCTCACCTACTAACCTCACTGTC
CTACAAAGTTCGAATGCAAGCACTGAAATGTTTCTCAGTTTTAGCTTTTAAAACCCCCAGGTATCGATG
ACCTGGTAAATGTTTTGGCTGATGGAGAATTGTTACCACAGATTTTTGTGAAGATGTTACAGAGGGATA
AGCCTATTGAGATGCAGCTCACATCAGCAAAATGTTTAACTTACATGTGTAGAGCTGGAGCAATTCGGAC
AGATGATAACTGTATTGTATTAAGACATTACCTGTTTGGTTCGAATGTGCAGTAAGGAGAGATTACTA
GAGGAGAGAGTTGAAGGAGCTGAGACACTTGCCTATCTGATTGAACCAGATGTTGAGCTACAGAGAATCG
CTAGCATAACTGATCACCTCATTGCCATGCTTGTCTGATTATTTCAAGTATCCCAGCTCAGTGAGTGCCAT
CACTGATATTAAGGCTTGATCATGATTTAAACATGCTCACGAACTCCGCCAGGCTGCATTCAAGCTC
TATGCCTCTCTTGAGCAAATGATGAAGACATCCGGAAGAAGATCATTGAGACTGAAAAATGATGGACC
GAATTGTGACTGGCTTGTCTGAGTCTAGTGTCAAGGTGCGGTTAGCTGCCGTGAGATGTTTGCACAGTTT
ATCCAGATCTGTGCAGCAGCTTCGAACCAAGTTTCCAGGATCATGCTGTTTGGAAACCTTTAATGAAGGTT
TTACAAAATGCACCAGATGAAATCCTAGTGGTAGCATCTTCCATGCTGTGTAATCTTCTTCTGAATTTT
CTCCAAGCAAAGACCAATTTTGAATCAGGAGCCGTAGAGCTACTTTGTGGATTAACCTCAGAGTGAAAA
TCCTGCTTACGAGTGAATGGAATTTGGGCTTTAATGAATATGGCATTTCAGGCTGAACAAAAAATAAAA
GCAGATATTTACGAAGCTTGTACTGAAACAGCTATTCCGGTTATTATCAGATTCAGATTTGAATGTGC
TGATGAAGACATTGGGACTTCTTAGAAATCTCCTCTCCACTCGTCTCATATAGATAAAAATAATGAGTAC
TCATGGAAGCAAATTATGCAAGCCGCTCACTCTTATTCTAGAAGGGGAACATAACATTGAGGTCAAAGAG
CAGACACTGTGCATCTTAGCCAACATAGCGGATGGGACAACAGCAAAAGATCTTATTATGACCAATGATG
ATATCCTACAGAAAATCAAGTATTACATGGGCCATTACATGTTAACTGCAGCTTGCAGCCATGTTTTG
TATATCAAACCTCATATGGAATGAAGAGGAAGGTTCAAGAAGCCAGGATAAATTACGAGACATGGGC
ATCGTAGATATTCTACACAAACTGAGTCAGTCACCAGATCAAACCTTTGTGACAAGGCAAAGATGGCAC
TGCAGCAGTACCTGGCA

ACGCGTACGCGGCCGCTCGAGCAGAACTCATCTCAGAAGAGGATCTGGCAGCAAATGATATCCTGGATT
ACAAGGATGACGACGATAAGGTTTAA

Reconstitution Method:

1. Centrifuge at 5,000xg for 5min.
2. Carefully open the tube and add 100ul of sterile water to dissolve the DNA.
3. Close the tube and incubate for 10 minutes at room temperature.
4. Briefly vortex the tube and then do a quick spin (less than 5000xg) to concentrate the liquid at the bottom.
5. Store the suspended plasmid at -20°C. The DNA is stable for at least one year from date of shipping when stored at -20°C.

RefSeq: [NM_015396.6](#)

RefSeq Size: 4915 bp

RefSeq ORF: 1980 bp

Locus ID: 25852

UniProt ID: [Q8IUR7](#)

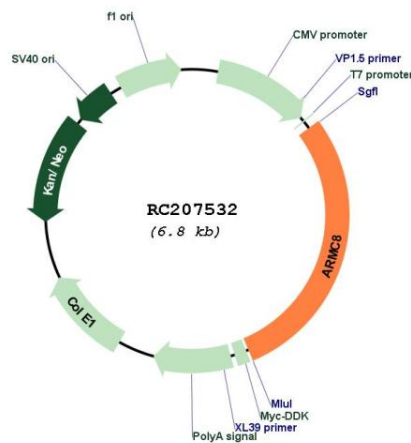
Cytogenetics: 3q22.3

Domains: Armadillo_seg

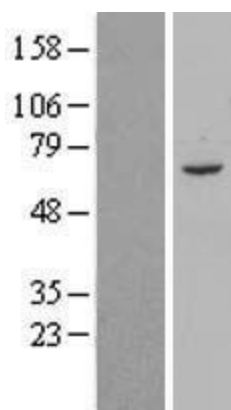
MW: 74 kDa

Gene Summary: Component of the CTLH E3 ubiquitin-protein ligase complex that selectively accepts ubiquitin from UBE2H and mediates ubiquitination and subsequent proteasomal degradation of the transcription factor HBP1.[UniProtKB/Swiss-Prot Function]

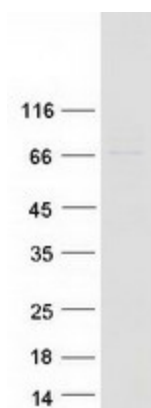
Product images:



Circular map for RC207532



Western blot validation of overexpression lysate (Cat# [LY414566]) using anti-DDK antibody (Cat# [TA50011-100]). Left: Cell lysates from untransfected HEK293T cells; Right: Cell lysates from HEK293T cells transfected with RC207532 using transfection reagent MegaTran 2.0 (Cat# [TT210002]).



Coomassie blue staining of purified ARMC8 protein (Cat# [TP307532]). The protein was produced from HEK293T cells transfected with ARMC8 cDNA clone (Cat# RC207532) using MegaTran 2.0 (Cat# [TT210002]).