

Product datasheet for RC207531

Cullin 7 (CUL7) (NM_014780) Human Tagged ORF Clone

Product data:

Product Type:	Expression Plasmids
Product Name:	Cullin 7 (CUL7) (NM_014780) Human Tagged ORF Clone
Tag:	Myc-DDK
Symbol:	CUL7
Synonyms:	3M1; CUL-7; dj20C7.5; KIAA0076
Vector:	pCMV6-Entry (PS100001)
E. coli Selection:	Kanamycin (25 ug/mL)
Cell Selection:	Neomycin
ORF Nucleotide Sequence:	>RC207531 representing NM_014780 Red=Cloning site Blue=ORF Green=Tags(s)

TTTTGTAATACGACTCACTATAGGGCGCCGGGAATTCGTCGACTGGATCCGGTACCGAGGAGATCTGCC
GCC**CGATCGCC**

ATGGTGGGAGAACTCCGCTACAGGGAATTCAGGGTGCCCTGGGGCCGGCTTACATGCCTATCCTGATG
AGCTGATCCGCCAGCGCGTGGGCCATGATGGGCATCCTGAGTACCAGATCCGTTGGCTCATCTCGGGCG
TGGCGATGAGGGGACGGGGCTCTGGCCAAGTGGACTGCAAGGCTGAGCACATCCTGCTGTGGATGTC
AAGGATGAGATCTATGCCAACTGCCACAAGATGCTGGGCGAGGATGGCCAGGTCATCGGGCCCTCCAGG
AGTCTGCAGGGGAGGTTGGGGCCCTGGCAAACTCTGTGCTGGAGGAGATGGAAACCAGCTGAAGTCCCT
CATTTCAGAGAGCCCTTCGGCAGCTGGAGGAGTGTGTGGGCACTATCCCTCCTGCTCCTACTTCACACT
GTCCACGTGCTCAGCGCCTATGCCAGCATTGAGCCCTCACTGGAGTATTCAGGACCCAAGGGTCTGG
ACTTGCTCATGCACATGTTGAGTAGTCTGATTATCAGATTCGCTGGAGTGCAGGCCGGATGATACAAGC
CCTGTCTCCCATGACGCTGGGACCCGGACTCAGATCCTTCTGTCAGTGCAGCAACAAGAAGCCATTGAG
AAACACCTGGATTTTGACAGCCGCTGTGCTCTGCTAGCACTGTTTGCACAGGCCACGCTCTCTGAACACC
CCATGTCTTTGAGGGCATTTCAGCTACCACAGGTCCAGGAAGGGTCTCTTCTCCCTGGTGAAGCGGTA
TTTGATGTACCTCGCTCCTGGATCAGCTGAACGACAGTGTGCGGAGCCAGGAGCCAGAACACCTCT
GCTCCTGAGGAGTTGAGTGGGAGAGGGGTCAACTGGAGCTGGAGTTCAGTATGGCCATGGGCACCTGTA
TCTCGGAGCTGGTGAAGCCATGCGCTGGGACAGGCCTCAGACAGACCAAGGAGCTCAGCACGGTCCCC
CGGTTCCATCTTCAGCCTCAGCTGGCAGATGTGAGCCAGGGCTCCCCGCTGCCAGGCTCAGCCCTCC
TTCAGGAGGTCAAGACGTTTTTCGCCCTCGTTCTGAGTTCGCAAGTGGCAATACCTATGCTTTGTATGTGC
GGGACACACTGCAGCCGGGATGCGAGTGGGATGCTGGATGATTATGAGGAGATCAGTGCCGGGATGA
GGCGGAGTTTCGGCAGAGCAACAACGGTGTGCCTCCTGTGCAGGTATTTGGGAGTCAACAGGCCGACC
TATTGGGTGCACTGGCACATGCTGGAGATCTTGGGCTTTGAGGAAGACATTGAGGACATGGTTGAGGCTG
ATGAGTACCAAGGGGAGTGGCCAGTAGAGTCCCTGGGTAGAGCCCTGCCTGCCTGGCGCTGGAGGCCAT
GACAGAATCTATGCTGTGCCTATGTGCTGCCTGAGGATGAGGACACTGAGGAGTGTGAACACCTGACC
CTGGCTGAGTGGTGGAACTCCTCTTTCATCAAGAAGCTGGATGGACCTGACCATCAGGAGGTTCTCC



[View online »](#)

AGATCCTCCAGGAGAACCTAGATGGGGAGATTCTGGATGATGAGATCCTAGCTGAACTGGCCGTGCCCAT
 AGAATTGGCCAGGACTTGTCTGCTGACTCTGCCACAGCGACTCAATGACAGTGCCCTCAGGGACCTGATC
 AACTGCCATGTCTACAAGAAGTATGGGCCTGAAGCCCTAGCAGGGAAACCAAGCCTACCCATCCCTTCTAG
 AAGCCCAAGAAGATGTCTCCTGCTAGACGCGCAGGCCAGGCTAAGGACTCAGAAGATGCAGCCAAAGT
 GGAAGCAAAAAGAACCCCATCTCAGAGTCCCAACTCCCCTGCAGCGTCTGGTGGAGGGTTATGGTCCA
 GCTGGGAAAATCCTCCTGGATCTAGAGCAAGCCCTCAGCTCAGAGGGGACCCAGGAGAACAAGTCAAGC
 CACTCCTGCTGCAGTGCAGCGCGCAGCCGAGCCCTTCTGGCACTGATGCAGAGCTGGACACTCCGGA
 GACTAACAGGACCCTGCACCTGACTGTGCTGAGAATCCTGAAGCAGCTGGTGGACTTCCCCGAGGCACTG
 CTGCTCCCCTGGCACGAGGCCGTGGATGCCTGCATGGCCTGCCTGCGGTCCCCAAACTGATCGAGAGG
 TGCTCCAGGAACTGATTTTCTTCTGCACCGCCTGACCTCAGTGAGCAGGGACTATGCCGTGGTGTGAA
 TCAGCTGGGAGCAAGAGACGCTATCTCCAAGGCCCTGAAAAGCACCTGGGAAAGCTGGAGCTGGCTCAG
 GAGCTGCGGGACATGGTGTCAAGTGTGAGAAGCATGCCACCTTACCACAACTATCACCAACATCC
 TGGGAGGCTGCATCCAGATGGTGTGGCCAGATCGAAGACCACAGACGAACCCACCAACCCATCAACAT
 CCCTTTCTTTGATGTGTCTCAGATACCTGTGCCAGGGCTCCAGTGTGGAAGTGAAGGAGGACAAGTGC
 TGGGAGAAGTGGAGGTGCTCCAACCCGACCCGGGCCAGCAAGCTGACGGACCACAACCCCAAGACCT
 ATTGGGAGTCCAACGGCAGCGCCGGCTCCCCTACATCACCTGCACATGCGCCGGGGCATCCTCATCAG
 GCAACTGACTCTGCTTGTGGCTAGTGAGGACTCGAGTTACATGCCGGCCCCGAGTGGTGGTGTGCGGGGT
 GATAGCACTAGCTCTTTCACACGGAECTAACTCGGTGAATGTGATGCCCTCTGCCAGCCGGGTGATCC
 TCCTGGAGAACCTGACCCGCTTCTGGCCATCATCCAGATCCGCATAAAGCGCTGCCAGCAGGGTGGCAT
 TGATACGCGCATTGCGGGGTTAGAGATCCTAGGCCCAAGCCACGTTCTGGCCAGTGTTCGGGGAGCAG
 CTCTGTGTCACACGCCTCTTCTACATGGTTTCGGGCACAGGCCCTGGAGCCAGGACATGGCAGAGGACC
 GCAGGACCTCCTGCACCTGAGTCTAGACTCAACGGTGTCTGCGCCAGGAGCAGAATTTGCTGACCC
 GTTCTCCTGATGACGAGGCTGCCAAGCTCTGGCAAGACTGCTGGGAGGCCCTGTCAGCCCGTGG
 GTGCAGAACATCACCTCCCCTGATGAGGATGGCATTAGCCCCCTGGGTTGGCTGCTGACCAGTACCTGG
 AGTGTGAGGAAGCTGTCTTCAACCCCCAGAGCCGCGGCCAGCTTTCTTCTGCGGGTGGCCGTCTCAC
 TCACCTGCTGGTGCATGTGAGCCCTGTGAGGCACCCCTCCTGTGGTGGCCACTCCTCGGCCAAAGGC
 AGAAACAGAAGCCAGACTGGAGCTCCTGGCTACCCGGGGCCTTCAAGCAGCATCATGAGAACTGGA
 CGCGCTGTTGGCGGGCCGTGGTGGAGAAGCAGGTGAACAATTTTCTGACCTCATCTGGCGGGATGATGA
 CTTTGTGCCACGCTACTGTGAGCACTTAAATATTCTGCAGAACTAAGCTCTGAACTGTTGGGCCCTCGG
 GCAGCCTTCTTGTGGCGCTGAAAATGGCTGTGCGGGAGCCTTGTGAACTCCCTTTTCTCAAAGCTG
 CCCACGTGAGTGAGCAGTTCGCCCGGCACATTGACCAGCAGATCCAGGGCAGCCGGATCGGTGGAGCCCA
 GGAATGGAGAGGCTGGCACAGCTGCAGCAATGCCTGCAAGCTGTCTGATTTTCTCCGGCTTGGAGATA
 GCCACCCTTTTGTGACTTATTACCAGCACTACATGGCGGACCGTCTCCTGGGCGTGGTCTCGAGCTGGC
 TGGAGGGGGCCGTGCTGGAGCAGATCGGTCCCTGCTTCCCCAACCCGCTCCCCCAGCAGATGTTGCAGAG
 CCTGAGCACCTTAAGGAGCTGCAGCGCAGTTCACGTCTACCAGCTCCAGCAGCTGGATCAGGAACTC
 CTGAAGCTGGAGGATACAGAGAAGAAAATACAGGTGGGCCTTGGGGCCAGTGGCAAGGAGCACAAGAGCG
 AGAAGGAAGAGGAAGCTGGGGCAGCAGCAGTGGTGGATGTGGCGGAGGGAGAGGAGGAAGAGGAGGAGAA
 TGAGGACCTCTACTATGAAGGGGCAATGCCAGAAGTGTCTGTGCTTGTCTGTCCGACACTCCTGGCCT
 GTTGCCTCAATCTGCCACACACTGAACCCAGAACCTGCCTGCCCTCTACCTGAGGGGCACCTTTGAACA
 GATACTCCAACCTTCTACAACAAGAGTCAGAGCCACCCTGCCCTTGAAGCAGGCTCACAGAGGCGACTGCA
 GTGGACGTGGCTGGGCTGGGCTGAGCTGCAGTTTGGGAACCAGACCCTGCATGTGTCCACCGTGCAGATG
 TGGCTACTGCTGTATCTCAACGACCTGAAGGCGGTCTCTGTGGAGAGTCTGCTGGCGTTCTCAGGGCTCT
 CCGCAGACATGCTCAATCAGGCGATTGGGCCCTCACCTCTTCAAGAGGCCCCCTGGACCTTACAGAGCA
 AAAGGATATACCAGGAGGGTCTCAAGATTGAGATGGCAGCAAGGAACCCAGGTGAGATGGGACATT
 GTGCGGCTCATCCACCTCAGACGTACCTGCAAGCTGAGGGTGAAGACGGCCAGAACTTGGAGAAGAGAC
 GGAATCTTCTGAACTGCCTCATCGTCCGAATCCTCAAGGCCATGGAGATGAGGGGCTGCACATTGACCA
 GCTTGTCTGTCTGGTGTGGAGGCTTGGCAGAAGGGCCCGTGTCTCCCAGGGGTTTGGTACGACGCTT
 GGTAAAGGGTCTGCATGCAGCAGCACTGACGTCTCTCCTGCATCCTACACCTCCTGGGCAAGGGCACGC
 TGAGACGCCATGACGACCGGCCCCAGGTGCTGTCTATGCAGTCCCTGTGACTGTGATGGAGCCTCACAC
 TGAGTCCCTGAACCCAGGCTCCTCAGGCCCAACCCACCCTCACCTTCCATACCCATACAGATTGCTCTC
 CGGGGTGTGCCCTATGCCTCCTGCAGTCCACCCAGAGCTTCTTACCTCCGG

ACGCGTACGCGGCCGCTCGAGCAGAAACTCATCTCAGAAGAGGATCTGGCAGCAAATGATATCCTGGATT
ACAAGGATGACGACGATAAGGTTTAA

Protein Sequence:

>RC207531 representing NM_014780
Red=Cloning site Green=Tags(s)

MVGELRYREFRVPLGPGLHAYPDELIRQVRVGHDPHEYQIRWLILRRGDEGDGGSQVDCCKAEHILLWMS
KDEIYANCHKMLGEDGQVIGPSQESAGEVGDVLEEMETDVKSLIQRALRQLEECVGTIPPAPLLHT
VHVLSAYASIEPLTGVFKDPRVLDLLMMLSSPDYQIRWSAGRMIALSSHDAGTRTQILLSSQQEAEIE
KHLDFDSRCALLALFAQATLSEHPMSFEGIQLPQVPGRVFLSVKRYLHVTSLLDQLNDSAAEPGAQNTS
APEELSGERGQLELEFSMAMGTLISELVQAMRWDQASDRPRSSARSPGSIQFQPLADVSPGLPAAQAQPS
FRSRRFRPRSEFASGNTYALYVRDTLQPGMRVRMLDDYEEISAGDEGEFRQSNNGVPPVQVFWESTGRT
YVWHHMLEILGFEEIDEMVEADEYQGAVASRVLGRALPAWRWRPMTLEYAVPYVLPEDEDTECEHLT
LAEWELLFFIKKLDGPDHQEVLQILQENLDGEILDDEILAELAVPIELAQDLLLLTLPQRNDSALRDLI
NCHVYKKGPEALAGNQAYPSLLEAQEDVLLDDAQAQAKDSEDAKVEAKEPPSQSPNTPLQRLVEGYGP
AGKILLDLEQALSSEGTQENKVKPLLLQLQRQPFPFLALMQSLDTPETNRTLHLTVLRILKQLVDFPEAL
LLPWHEAVDACMACLRSPNTDREVLQELIFFLHRLTSVSRDYAVVLNQLGARDAISKALEKHLGKLELAQ
ELRDMVFKCEKHAHLRKLITNILGGCIQMVLGQIEDHRRTHQPINIPFDVFLRYLCQGSSEVKEKDC
WEKVEVSSNPHRASKLTDHNPITYWESNGSAGSHYITLHMRRGILIRQLTLLVASEDSSYMPARVVVCGG
DSTSSLHTELNSVNVMPASRVILLENLTRFWPIIQIRIKRCQQGGIDTRIRGLEILGPKPTFWPVFREQ
LCRHTRLFYMVRAQAWSQDMAEDRRSLHLSSRLNGALRQEQNFADRFLPDDEAAQALGKTCWEALVSPV
VQNTITSPDEDGISPLGWLLDQYLECQEA VFNQSRGPAFFSRVRLTHLLVHVEPCEAPPPVATPRPKG
RNRSHDWSSLATRGLPSSIMRNLTRCWRAVVEKQVNNFLTSSWRDDDFVPRYCEHFNILQNSSSELFGPR
AAFLALQNGCAGALLKLPFLKAAHVSEQFARHIDQIQGSRIGGAQEMERLAQLQQCLQAVLIFSGLEI
ATTFEHHYQHVMADRLLVGVSSWLEGA VLEQIGPCFPNRLPQQMLQSLSTSKELQRQFHVYQLQQLDQEL
LKLEDETEKKIQVGLGASGKEHKSEKEEEEAGAAVVDVAEGEEEEENEDLYYEGAMPEVSVLVLSRHSWP
VASICHTLNPRTCLPSYLRGTLNRYSNFNKQSQHPALERGSQRRQLQWTWLGWAEALQFGNQTLHVSTVQM
WLLL YLNDLKAVSVESLLAFSGLSADMLNQAIGPLTSSRGLDLHEQKDIPGGVLKIRDGSKEPRSRWDI
VRLIPPQTYLQAEGEDGQNLKRRNLLNCLIVRILKAHGDEGLHIDQLVCLVLEAWQKGPCPPRGLVSSL
GKGSACSSTDVLSCILHLLGKGLRRHDDRPQVLSYAVPVVMEPHTESLNPSSGPNPPLTFHTLQIRS
RGVPYASCTATQSFSTFR

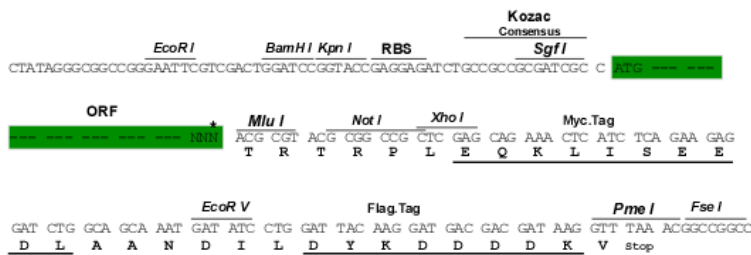
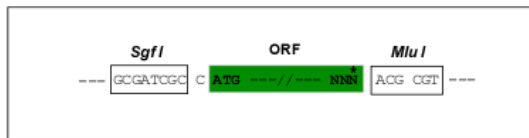
TRTRPLEQKLISEEDLAANDILDYKDDDDKV

Restriction Sites:

SgfI-MluI

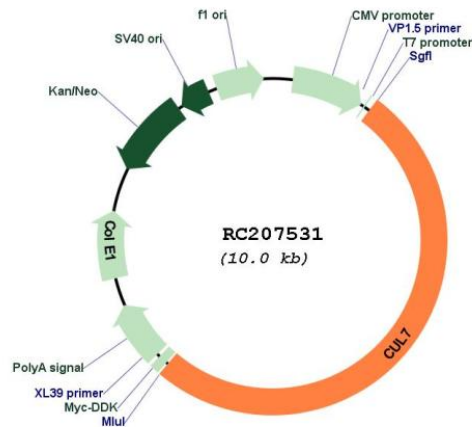
Cloning Scheme:

Cloning sites used for ORF Shuttling:



* The last codon before the Stop codon of the ORF

Plasmid Map:



ACCN: NM_014780

ORF Size: 5094 bp

OTI Disclaimer: The molecular sequence of this clone aligns with the gene accession number as a point of reference only. However, individual transcript sequences of the same gene can differ through naturally occurring variations (e.g. polymorphisms), each with its own valid existence. This clone is substantially in agreement with the reference, but a complete review of all prevailing variants is recommended prior to use. [More info](#)

OTI Annotation: This clone was engineered to express the complete ORF with an expression tag. Expression varies depending on the nature of the gene.

Components:	The ORF clone is ion-exchange column purified and shipped in a 2D barcoded Matrix tube containing 10ug of transfection-ready, dried plasmid DNA (reconstitute with 100 ul of water).
Reconstitution Method:	<ol style="list-style-type: none">1. Centrifuge at 5,000xg for 5min.2. Carefully open the tube and add 100ul of sterile water to dissolve the DNA.3. Close the tube and incubate for 10 minutes at room temperature.4. Briefly vortex the tube and then do a quick spin (less than 5000xg) to concentrate the liquid at the bottom.5. Store the suspended plasmid at -20°C. The DNA is stable for at least one year from date of shipping when stored at -20°C.
RefSeq:	NM_014780.5
RefSeq Size:	5520 bp
RefSeq ORF:	5097 bp
Locus ID:	9820
UniProt ID:	Q14999
Cytogenetics:	6p21.1
Protein Pathways:	Ubiquitin mediated proteolysis
MW:	191.2 kDa
Gene Summary:	The protein encoded by this gene is a component of an E3 ubiquitin-protein ligase complex. The encoded protein interacts with TP53, CUL9, and FBXW8 proteins. Defects in this gene are a cause of 3M syndrome type 1 (3M1). Two transcript variants encoding different isoforms have been found for this gene. [provided by RefSeq, Dec 2009]