

Product datasheet for RC207528

IFT140 (NM_014714) Human Tagged ORF Clone

Product data:

Product Type:	Expression Plasmids
Product Name:	IFT140 (NM_014714) Human Tagged ORF Clone
Tag:	Myc-DDK
Symbol:	IFT140
Synonyms:	c305C8.4; c380F5.1; gs114; MZSDS; RP80; SRTD9; WDTC2
Mammalian Cell Selection:	Neomycin
Vector:	pCMV6-Entry (PS100001)
E. coli Selection:	Kanamycin (25 ug/mL)
ORF Nucleotide Sequence:	>RC207528 ORF sequence Red=Cloning site Blue=ORF Green=Tags(s)

TTTTGTAATACGACTCACTATAGGGCGCCGGGAATTCGTCGACTGGATCCGGTACCGAGGAGATCTGCC
GCC**CGATCGCC**

ATGGCCCTCTATTATGACCACCAGATAGAAGCCCCGGATGCAGCAGGGTCACCCTCATTTATCAGCTGGC
ACCCTGTCCATCCATTCTTGGCAGTTGCTTACATCAGCACAACTCAACAGGCAGCGTGGATATTTACCT
GGAGCAAGGGGAGTGCCTGCCAGATACACACGTCGAGAGGCCGTTCCGGGTTGCTTCCCTGTGCTGGCAC
CCGACCGCGTGGTGTGGCTGGGACTGGAGACTGGAGAAGTGACGGTGTAAACAAGCAGGACAAGG
AGCAGCACACGATGCCCTGACACACACAGCCGACATCACCGTGTCCGTTGGAGCCCCAGTGAAACTG
CCTGCTGTCTGGGACAGGCTTGGTGTCTTGTCTTGTGGAGGTTGGACCAAAGGGCCGAGTGCAAGGG
ACGCTCTGTGAAACACGAGTATGGGAAACACCTCACGCACTGCATCTTCCGGCTCCCCCTCCTGGCG
AGGACCTGGTTCAGTTGGCAAAGGCAGCTGTGAGCGGTGATGAGAAAGCCCTGGACATGTTAACTGGAA
GAAGAGCAGTTCTGGAAGTTTGTGAAGATGGGGTCTCACGAGGGGCTGTTGTTCTTTGTGAGTCTGATG
GACGGGACAGTGCATATGTGGATGAGAAGGGCAAGACCACTCAGGTGGTGTCCGAGACAGCACGATTC
AGATGCTGTTCTACATGGAGAAGAGGGAGGCACTGGTGGTGGTTCACAGAGAACCTCCGGCTGTCCCTGTA
CACGGTGCCTCCTGAGGGCAAAGCAGAAGAAGTGAAGGTCAAGCTGAGCGGGAAAACCGCCGCCGG
GCAGACATCGCTTGTGATTGAAGGCAGCCTTCTCGTGATGGCCGTCGGGGAGGCTGCCCTCAGATTCTGG
ACATAGAACGAGGAGAGAATTATATACTAGTCCAGATGAGAAGTTTGGCTTTGAGAAAGGAGAGAATAT
GAACTGTGTGTTACTGTAAAGTCAAAGTCTTCTGGCCGCTGTTACCGACAGAGGGCGAGTAGCCATG
TGGAGGAAAGTACCAGACTTCTGGGCAGCCCCGGGCGAGAGGGCAAGGACAGGTGGGCCCTTACAGACC
CTACCGAGCTCCAAGGAAACATCACGCAAATCCAGTGGGGTCCAGGAAGAACCTGCTGGCAGTGAACAG
CGTCATCTCCGTGGCCATCCTCAGCGAGCGGGCCATGTCGTACACTTCCACCAGCAAGTGGCCGCCATG
CAGGTCTCCCGAGTCTGCTGAATGTGTGCTTCTGTCCAGGGGTCGCACACAGCCTGCGCACCCGACA
TGCACATCAGTGGAGTGTGGCCACCAAGGATGCTGTCGAGTCTGGAACGGAAGGCAGGTGGCGATCTT
CGAGCTTCTGGAGCCGGATACGGAGTGCAGGGACCTTCTTGTGTGAGACGCTGTGTTAGCAATGCAT



[View online »](#)

GAAGAAAACGTTTACACGGTGGAGTCAAACCGAGTTCAAGTTCGAACCTGGCAGGGGACTGTCAAACAAC
TCCTCCTTTTCTCGGAGACTGAGGGGAATCCCTGCTTCTTGACATCTGTGGGAATTTCTGGTTGTAGG
GACAGACTTGGCTCACTTTAAAAGCTTTGATCTTTCCGAAGAGAGGGCCAAAGCACACTGTAGCTGCAGG
AGCCTGGCGGAGCTGGTCCCTGGGGTGGGGGCATCGTCTCTGCGGTGCAGCAGCAGCGGGAGCACCA
TCAGCATCCTCCCAGCAAGGCTGACAACAGCCCTGATTCAAAATCTGCTTCTACGATGTTGAAATGGA
CACAGTGACCGTCTTTGACTTCAAGACTGGACAAATTGATCGGAGAGAGACGCTGCTCTTAATGAGCAA
GAGACTAATAAGAGCCACTCTTTGTGGATGAGGGACTGAAAAATTATGTTCCCGTGAACCACTTCTGGG
ACCAGAGTGAGCCCCGGCTGTTTGTATGCGAAGCCGTGCAGGAGACGCCGCTCCACGCTCAGTCTGC
AAACGGGCAGCCCCAAGATGGGCGCGTGGCCCTGCGGCAGATGTTTTGATCCTGTCTTCTTATTTC
GAAGAGCACGGCTTCTGCTTTCATGAGAGCTTCCCCGGCCTGCCACCTCCACAGTCTCCTGGGGATGG
AAGTGCCTTATTACTACTTACAAGAAAGCCGAAGAAGCAGACAGAGAAGACGAGGTGGAGCCTGGGTG
CCACCACATCCCTCAGATGGTGTCCAGGAGACCCCTGCGAGACTTTGTGGGGCTGGAGGACTGCGACAAG
GCCACCCGGGACCCATGCTCCACTTCACTTCTTTGTCACCATAGGAGACATGGACGAAGCCTTCAAAT
CCATCAAGCTCATCAAAGTGAGGCCGTCTGGGAGAACATGGCGCGCATGTGCGTGAAGACCCAGCGGT
GGAGCTGGCCAAGGTGTGCTGGGGAACATGGGCCATGCCCGGGGGCCGAGCGCTGCGTGAGGCGGAG
CAGGAGCCGGAGCTAGAGGCCCGGTGGCCGTGCTGGCCACGCAGCTGGGCATGTGGAGGACGCCGAGC
AGCTGTACAGGAAGTGAAGCGCCACGACCTCCTGAACAAGTTCTACCAGGCTGCGGGCCGGTGGCAGGA
GGCCCTCCAGGTAGCCGAGCACCACGATCGCGTGCACCTGCGCAGCACCTACCACCGCTATGCCGGGCAC
CTGGAGGCCAGCGCCGACTGCAGCCGGGCCCTCAGTTACTACGAGAAGTCGGACACGCACCCGCTTCGAGG
TGCCCAGGATGCTGTGCGGAGGACTGCCGTCCCTGGAGCTCTACGTGAATAAAATGAAGGATAAGACCT
GTGGCGGTGGTGGGCGCAGTACCTGGAGAGCCAGGGCGAGATGGACGCCGCGCTGCACTACTACGAGCTG
GCCCGGGACCACTTCTCCCTGGTCCGCATCCACTGCTTCCAGGGCAATGTCCAGAAGGCTGCGCAAAATG
CCAACGAGACAGGAAACCTGGCGCCCTCCTACCCTCGCCCGCAGTACGAGAGCCAGGAGGATCGG
GCAGGCGGTGCACTTCTACACCCGGGCACAGCCCTTCAAGAATGCCATCCGCTGTGCAAGGAGAACGGC
CTGGACGACCAGCTCATGAACCTGGCCCTGCTGAGCTCCCCGAGGACATGATCGAGGCGGCCGATACT
ACGAGGAGAAGGGCGTGCAGATGGACAGGGCGGTGATGCTGTACCACAAGGCTGGCCACTTCTCCAAGGC
CCTGGAGCTGGCCTTGGCACCCAGCAGTTTGTGGCCCTACAGCTCATAGCAGAGGACCTGGATGAGACG
TCAGACCTGCGCTCCTGGCCCGTCTCCGACTTCTTTCATCGAGCAGTCACTACGAGAGGGCGGTAG
AGCTGTGCTGGTGCAGGAAGTATCAGGAAGCCCTGCAGCTGTGCTGGGGCAGAACATGAGCATCAC
CGAGGAGATGGCGAAAAGATGACCGTGGCCAAGGACTCCTCGGACCTGCCTGAGGAGTCGCGGGGGAG
CTGCTGGAGCAGATAGCAGACTGCTGCATGCGCCAGGGCAGTACCACCTGGCCACCAAGAAGTACACGC
AGGCCGGCAACAAGCTGAAGGCCATGAGGGCGTCTCAAATCCGGAGACACGGAGAAAATCACGTTCTT
CGCGAGCGTGTCCAGGCAGAAGGAAATCTACATCATGGTGTAACTACCTGCAGTCCCTGGACTGGCGG
AAGGAGCCGGAGATCATGAAGAACATCATCGGCTTCTACACCAAGGGGCGGGCCCTGGACCTCCTGGCTG
GCTTTTATGACGCTTGTGCCAGGTGGAGATTGATGAATACCAGAATACGACAAAGCCACGGGGCGCT
GACCGAGGCCTACAAGTGCCTGGCCAAGGCCAAGGCCAAGAGCCCCCTGGACCAGGAGACCAGGCTGGCG
CAGCTGCAGAGCAGGATGGCACTGGTGAAGAGTTTATCCAGGCCCGCAGGACGTACACAGAGGACCCCA
AGGAGTCCATCAAGCAGTGTGAGCTGCTCCTGGAGGAACCAGACTGGACAGCACCATCCGCATCGGGGA
CGTCTATGGCTTCTGGTGGAGCACTACGTGCGGAAGGAGGAATACCAGACGGCCTACAGATTCTGGAG
GAGATGCGGGCGGGCTTCCCTTGGCCAACATGTCTACTACGTGAGCCCGCAGGCCGTGGACGCCGTGC
ACCGGGGGCTGGGTCTCCACTGCCACGCACCGTCCCCGAGCAGGTCCGCCACAACAGCATGGAGGACGC
CAGGGAGCTGGACGAGGAGTGGTGAAGAGGCAGATGACGACCCC

ACGCGTACGCGGCCGCTCGAGCAGAACTCATCTCAGAAGAGGATCTGGCAGCAATGATATCCTGGATT
ACAAGGATGACGACGATAAGGTTTAA

Protein Sequence:

>RC207528 protein sequence
 Red=Cloning site Green=Tags(s)

```

MALYYDHQIEAPDAAGSPSFI SWHPVHPFLAVAYISTTSTGSVDIYLEQGECPDTHVERPFRVASLCWH
PTRLLVAVGWETGEVTVFNKQDKEQHTMPLTHTADITVLRWSPSGNCLL SGDRLVLLLWRLDQRGRVQG
TPLLLKHEYGKHLTHCIFRLPPPGEDLVQLAKAAVSGDEKALDMFNWKKSSSGSLLKMGSHGELLFFVSLM
DGTVHYVDEKGGTTQVVSADSTIQMLFYMEKREALVVVTENLRSLSYTVPPEGKAEVVMVKLSGKTGRR
ADIALIEGSLLVMAVGEALRFWDIERGENYILSPDEKFGFEKGENMNCVCYCKVKGLLAAGTDRGRVAM
WRKVPDFLGSPPGAEKDRWALQTPTELQGNITQIQWGSRKLLAVNSVIVSAILSERAMSSHFHQVAAAM
QVSPSLLNVCFLSTGVAHSLRDMHISGVFATKDAVAVWNGRQVAIFELSGAAIRSAGTFLCETPVLAMH
EENVYTVESNRVQVRTWQGTVKQLLLFSETEGNPCFLDICGNFLVVGTDLAHFKSFDLSRREAKAHCSCR
SLAELVPGVGGIASLRCSSSGSTISILPSKADNSPDSKICFYDVEMDTVTVDFKTGQIDRRETLFNEQ
ETNKSHLFVDEGLKNYVPVNHFWQSEPRLFVCEAVQETPRSQPQSANGQPQDGRAGPAADVILSFFIS
EEHGFLHESFPRPATSHSLLGMEVPYYFTRKPEEADREDEVEPGCHHIPQMVSRRPLRDFVGLDCDK
ATRDAMLHFSFFVTIGDMDEAFKSIKLIKSEAVWENMARMCVKTQRLDVAKVCLGNMGHARGARALREAE
QEPELEARVAVLATQLGMLDEAEQLYRCKRHDLNKFYQAAGRWQEQALQVAEHDRVHLRSTYHRYAGH
LEASADCSRALSYYEKSDTHRFEVPRMLSEDLPSLELYVNKMKDKTLWRWVAQYLESQGEEMAALHYEL
ARDHFSLVRIHCFQGNVQKAAQIANETGNLAASYHLARQYESQEEVQAVHFYTRAQAFKNAIRLCKENG
LDDQLMNLALLSSPEDMIEAARYEEKGVQMDRAVMLYHKAGHFSKALELAFATQQFVALQLIAEDLDET
SDPALLARCSDFEIEHSQYERAVELLLAARKYQEQALQLCLGQNMSITEEMAEKMTVAKDSSDLPEESRRE
LLEQIADCCMRQGSYHLATKKYTQAGNKLKAMRALLKSGDTEKIFFASVSRQKEIYIMAANYLQSLDWR
KEPEIMKNIIGFYTKGRALDLLAGFYDACAQVEIDYQNYDKAHGALTEAYKCLAKAKAKSPLDQETRLA
QLQSRMALVKRFIQARRTYTEDPKESIKQCELLLEEPDL DSTIRIGDVYGFVVEHYVRKEEYQTA YRFL E
EMRRRLPLANMSYVSPQAVDAVHRGLGLPLRPTVPEQVRHNSMEDARELDEEVVEEADDDP
    
```

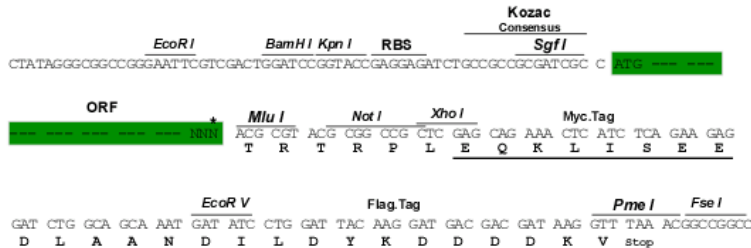
TRTRPLEQKLISEEDLAANDILDYKDDDDKV

Restriction Sites:

Sgfl-MluI

Cloning Scheme:

Cloning sites used for ORF Shuttling:



* The last codon before the Stop codon of the ORF

ACCN:

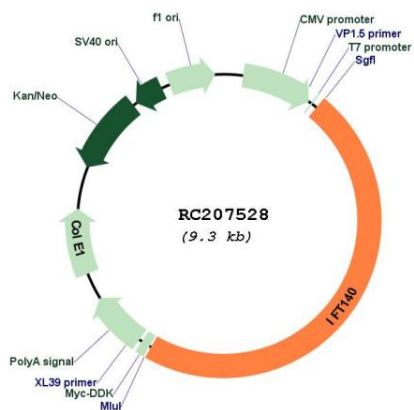
NM_014714

ORF Size:

4386 bp

OTI Disclaimer:	The molecular sequence of this clone aligns with the gene accession number as a point of reference only. However, individual transcript sequences of the same gene can differ through naturally occurring variations (e.g. polymorphisms), each with its own valid existence. This clone is substantially in agreement with the reference, but a complete review of all prevailing variants is recommended prior to use. More info
OTI Annotation:	This clone was engineered to express the complete ORF with an expression tag. Expression varies depending on the nature of the gene.
Components:	The ORF clone is ion-exchange column purified and shipped in a 2D barcoded Matrix tube containing 10ug of transfection-ready, dried plasmid DNA (reconstitute with 100 ul of water).
Reconstitution Method:	<ol style="list-style-type: none">1. Centrifuge at 5,000xg for 5min.2. Carefully open the tube and add 100ul of sterile water to dissolve the DNA.3. Close the tube and incubate for 10 minutes at room temperature.4. Briefly vortex the tube and then do a quick spin (less than 5000xg) to concentrate the liquid at the bottom.5. Store the suspended plasmid at -20°C. The DNA is stable for at least one year from date of shipping when stored at -20°C.
RefSeq:	NM_014714.4
RefSeq Size:	5277 bp
RefSeq ORF:	4389 bp
Locus ID:	9742
UniProt ID:	Q96RY7
Cytogenetics:	16p13.3
Domains:	WD40
MW:	165.2 kDa
Gene Summary:	This gene encodes one of the subunits of the intraflagellar transport (IFT) complex A. Intraflagellar transport is involved in the genesis, resorption and signaling of primary cilia. The primary cilium is a microtubule-based sensory organelle at the surface of most quiescent mammalian cells, that receives signals from its environment, such as the flow of fluid, light or odors, and transduces those signals to the nucleus. Loss of the corresponding protein in mouse results in renal cystic disease. [provided by RefSeq, Jun 2012]

Product images:



Circular map for RC207528