

Product datasheet for **RC207526**

SSX2IP (NM_014021) Human Tagged ORF Clone

Product data:

Product Type:	Expression Plasmids
Product Name:	SSX2IP (NM_014021) Human Tagged ORF Clone
Tag:	Myc-DDK
Symbol:	SSX2IP
Synonyms:	ADIP; hMsd1
Mammalian Cell Selection:	Neomycin
Vector:	pCMV6-Entry (PS100001)
E. coli Selection:	Kanamycin (25 ug/mL)



[View online »](#)

ORF Nucleotide Sequence:

>RC207526 representing NM_014021
 Red=Cloning site Blue=ORF Green=Tags(s)

TTTTGTAATACGACTCACTATAGGGCGGCCGGAATTCGTCGACTGGATCCGGTACCGAGGAGATCTGCC
 GCC**CGGATCGCC**

ATGGGAGATTGGATGACTGTTACAGATCCAGTCTGTCTTCAGAAAGCAAACACTATCTCTCAATATACCT
 CAGAAACAAAGATGTCTCCATCAAGTTTATACTCACAGCAAGTGCTATGTTCTTCAATACCTTTATCGAA
 AAATGTGCACAGTTTTTTCAGTGCCTTCTGCACAGAAGATAATATTGAACAGAGTATCTCATATCTTGAT
 CAGGAATTGACTACTTTTTGGTTTTCTTCATTATATGAAGAATCCAAAGGTAAAGAGACAAAGAGAGAGT
 TAAATATAGTAGCTGACTAAATTTGATGAATGAGCTGCTTGCTTCAGCGGAAGAACCTTCTAGCTCA
 GGAAAAATGTGGAGACACAGAATTTGAAGCTGGGAAGTGATATGGACCATCTACAGAGCTGCTACTCAAAA
 CTTAAGGAACAACCTGGAAACCTCCAGGAGGGAATGATTGGGCTTCAGGAAAGAGACAGACAGTTACAAT
 GTAAGAACAGGAATTTGCATCAGCTACTAAGAATGAGAAAGATGAGGTGCAAAAATTACAAAATATCAT
 TGCAAGTCGAGCTACTCAGTATAATCATGATATGAAGAGAAAAGAGCGTGAATATAATAAAGTGAAGGAA
 CGTCTACATCAACTTGTTATGAACAAGAAAGATAAGAAAATAGCTATGGACATTTTGAATATGTGCGGGA
 GAGCTGATGGA AAAAGAGGCTCCTGGAGGACTGGTAAAACCTGAAGCCAGGAATGAAGATGAAATGTATAA
 AATTCTCTTGAATGATTATGAATATCGTCAGAAACAAATCCTAATGGA AAAATGCAGAACTTAAAGAAGTT
 CTTCAACAAATGAAAAAGGAAATGATTTCTCTTCTTCTCCCAAAAAGAAGAAACCTAGAGAAAGAGTAG
 ATGATAGTACAGGAACCTGTTATTTCCGATGTTGAAGAAGATGCCGGGGAACCTAAGCAGAGAGAGTATGTG
 GGACCTTCTGTGAACTGTGAGAGAGCAGCTTACAAACAGCATCAGAAAACAGTGGAGAATTTTGAAA
 AGTCATGTAGAAAAGCTTGATAACCAAGTTTCAAAGGTACACCTGGAAGGTTTTAATGATGAAGATGTAA
 TCTCACGACAAGACCATGAACAAGAAACTGAAAAACTCGAGTTAGAAAATCAGCAGTGTAAGAAAATGAT
 TAAAACCTCAGCAACAGCTTTTACAGCAGCAGCTCGCTACTGCATATGATGATGATACCACCTTCACTATTA
 CGAGACTGTTATTTGTTGGAAGAAAAGGAACGTCTCAAAGAAGAATGGTCCCTTTTTAAAGAGCAGAAAA
 AGAATTTTGAGAGGGAGAGACGAAGCTTACAGAAGCCGCTATTCGCCTGGGATTGGAGAGAAAAGGCATT
 TGAAGAAGAAAGAGCCAGTTGGTTAAAGCAGCAGTTTCTAAATATGACTACCTTTGACCACCAGAACTCA
 GAAAATGTGAACTTTTTCAGTGCCTTCTCAGGAAGTTCTGATTGGGACAATCTTATAGTGCCTCGAGGC
 AGCCGCAAAAAGAGCCTCACAGTGTGTCTAATGGGTCTCCAGTTGCATGTCTAACTTACTAAATCTCT
 TCCTGCTTCACTTCCACTTCCAGCTTTTCCAGACACGTTCTGCATATCTGAACATAGTTCAATCAAT
 GTACTGAATATAACTGCTGAAGAAATTAACCAAAATCAGGTTGGAGGAGAATGTACAAATCAAAAATGGA
 GTGTGGCGTCAAGACCTGGATCACAGGAAGGTTGCTATAGTGGATGCTCCTTGAGCTACACAAATCTCA
 TGTAGAAAAGATGACTTACCT

ACGCGTACGCGGCCGCTCGAGCAGAAACTCATCTCAGAAGAGGATCTGGCAGCAATGATATCCTGGATT
 ACAAGGATGACGACGATAAGGTTTAA

Protein Sequence:

>RC207526 representing NM_014021
 Red=Cloning site Green=Tags(s)

MGDWMVTDPGLSSESKTISQYTSETKMSPSSLYSQVLCSSIPLSKNVHSFFSAFCTEDNIEQISISYLD
 QELTTFGFPSLYEESKGETKRELNIVAVLNCMNELLVLQRKNLLAQENVETQNLKLGSDMDHLQSCYSK
 LKEQLETSRREMIGLQERDRQLQCKNRNLHQLLKNEKDEVQKLQNIIASRATQYNHDMKRKEREYNLKE
 RLHQLVMNKKDKKIAMDILNYVGRADGKRGSWRTGKTEARNEDEMYKILLNDYERYQKQILMENAELKKV
 LQQMKKEMISLLSPQKKKPRERVDSTGTVISDVEEDAGELSRESMWDLSCEVREQLTNSIRKQWRILK
 SHVEKLDNQVSKVHLEGFNDEDVISRQDHEQETEKLELEIQCKEMIKTQQQLLQQQLATAYDDDTTSL
 RDCYLLEEKERLKEEWSLFKEQKKNFERRRSFTAAIRLGLERKAFFEEERASWLKQQLNMTTFDQHNS
 ENVKLFSAFSGSSDWDNLIVHSRQPQKKPHSVSNGSPVCM SKLTKSLPASPSTSDFCQTRSCISEHSSIN
 VLNITAEIEIKPNQVGGECTNQKWSVASRPGSQEGCYSGCSLSYTNHVEKDDLP

TRTRPLEQKLISEEDLAANDILDYKDDDDKV

Chromatograms: https://cdn.origene.com/chromatograms/mg4037_a05.zip
Restriction Sites: SgfI-MluI
Cloning Scheme:



ACCN: NM_014021
ORF Size: 1842 bp

OTI Disclaimer: The molecular sequence of this clone aligns with the gene accession number as a point of reference only. However, individual transcript sequences of the same gene can differ through naturally occurring variations (e.g. polymorphisms), each with its own valid existence. This clone is substantially in agreement with the reference, but a complete review of all prevailing variants is recommended prior to use. [More info](#)

OTI Annotation: This clone was engineered to express the complete ORF with an expression tag. Expression varies depending on the nature of the gene.

Components: The ORF clone is ion-exchange column purified and shipped in a 2D barcoded Matrix tube containing 10ug of transfection-ready, dried plasmid DNA (reconstitute with 100 ul of water).

- Reconstitution Method:**
1. Centrifuge at 5,000xg for 5min.
 2. Carefully open the tube and add 100ul of sterile water to dissolve the DNA.
 3. Close the tube and incubate for 10 minutes at room temperature.
 4. Briefly vortex the tube and then do a quick spin (less than 5000xg) to concentrate the liquid at the bottom.
 5. Store the suspended plasmid at -20°C. The DNA is stable for at least one year from date of shipping when stored at -20°C.

RefSeq: [NM_014021.4](#)
RefSeq Size: 5658 bp
RefSeq ORF: 1845 bp

Locus ID: 117178

UniProt ID: [Q9Y2D8](#)

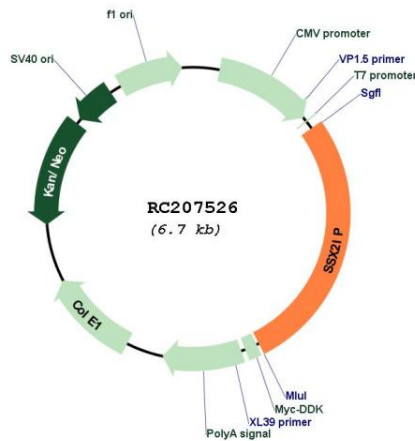
Cytogenetics: 1p22.3

Protein Pathways: Adherens junction

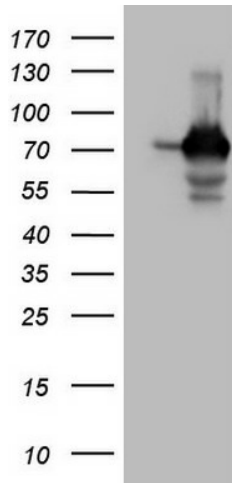
MW: 71.1 kDa

Gene Summary: This gene encodes a protein that binds the cancer-testis antigen Synovial Sarcoma X breakpoint 2 protein. The encoded protein may regulate the activity of Synovial Sarcoma X breakpoint 2 protein in malignant cells. Alternate splicing results in multiple transcript variants. A pseudogene of this gene is found on chromosome 3. [provided by RefSeq, Oct 2009]

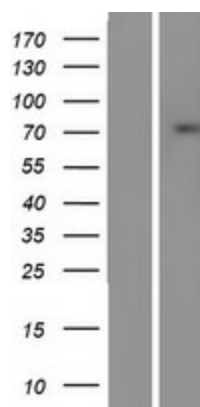
Product images:



Circular map for RC207526



HEK293T cells were transfected with the pCMV6-ENTRY control (Cat# [PS100001], Left lane) or pCMV6-ENTRY SSX2IP (Cat# RC207526, Right lane) cDNA for 48 hrs and lysed. Equivalent amounts of cell lysates (5 ug per lane) were separated by SDS-PAGE and immunoblotted with anti-SSX2IP (Cat# [TA807455])(1:2000). Positive lysates [LY415525] (100ug) and [LC415525] (20ug) can be purchased separately from OriGene.



Western blot validation of overexpression lysate (Cat# [LY415525]) using anti-DDK antibody (Cat# [TA50011-100]). Left: Cell lysates from untransfected HEK293T cells; Right: Cell lysates from HEK293T cells transfected with RC207526 using transfection reagent MegaTran 2.0 (Cat# [TT210002]).