

Product datasheet for **RC207524**

Neuroigin 1 (NLGN1) (NM_014932) Human Tagged ORF Clone

Product data:

Product Type:	Expression Plasmids
Product Name:	Neuroigin 1 (NLGN1) (NM_014932) Human Tagged ORF Clone
Tag:	Myc-DDK
Symbol:	Neuroigin 1
Synonyms:	NL1
Mammalian Cell Selection:	Neomycin
Vector:	pCMV6-Entry (PS100001)
E. coli Selection:	Kanamycin (25 ug/mL)



[View online »](#)

**ORF Nucleotide
Sequence:**

>RC207524 ORF sequence
 Red=Cloning site Blue=ORF Green=Tags(s)

TTTTGTAATACGACTCACTATAGGGCGGCCGGGAATTCGTCGACTGGATCCGGTACCGAGGAGATCTGCC
 GCC**CGCATCGCC**

ATGGCACTGCCAGATGCACGTGGCCAAATATGTTTGGAGAGCAGTGATGGCATGCTTGGTACACCGGG
 GATTGGGTGCCCATGACTCTCTGTATGTTGGGATGTTTGTTCAGGCTGGCCATGTGCTATCACAAAA
 ATTGGATGATGTGGACCACTGGTGGCTACCACTTTGAAAGATAAGAGGGATTAAGAAGGAACCTCAAT
 AATGAAATTTTGGGGCCTGTTATTCAATTTCTTGGGGTCCATATGCAGCCCCACCAACAGGGGAACGTC
 GTTTTCAGCCTCCAGAACCACCTCTCCCTGGTCAGATATCAGAAATGCCACTCAATTTGCTCCTGTGTG
 TCCCCAGAATATCATTGATGGCAGATTGCCAGAAGTCATGCTTCTGTGTGGTTACTAATAACTTGGAT
 GTGGTTTCATCATATGTGAAGACCAGAGCGAAGACTGCCTATATTTAAATATATATGTCCCGACTGAGG
 ATGATATTCGGGACAGTGGGGTCCAAACCAGTGATGGTGTATATCCATGGTGGCTCATATATGGAAGG
 TACTGAAATTTATATGATGGAAGTGTCTTGGCAAGTTATGGCAATGTGATCGTCATCACAGTCAACTAT
 CGACTTGGAGTACTCGGTTTCTTGTAGTACAGGCGATCAGGCTGCAAAGGGGAACCTATGGACTCCTTGATC
 TCATACAAGCTTTAAGATGGACTAGTGA AACATTGGATTCTTTGGTGGTGACCCCTTAAGAATCACTGT
 TTTTGGATCTGGTCTGGGGTTCATGTGTCAACCTGCTGACTTTATCCCATTATCTGAAGGTAACCGT
 TGGAGCAATTCACCAAAGGACTTTTTCAACGAGCAATAGCTCAAAGTGGAACAGCCCTTCCAGCTGGG
 CTGTTAGTTTTCAACCTGCAAAAATAGCTAGAATGTTGGCCACAAAAGTTGGTTGCAATGTTTCAGATAC
 AGTAGAGTTAGTGAATGCCTACAGAAGAAGCCTTACAAAGAACTTGGTACCAAGATATCAACCAGCT
 CGATACCACATAGCCTTGGACCTGTGATTGATGGTGTGTAATACCAGACGACCCCGAGATATTGATGG
 AGCAAGGAGAGTTTCTCAACTATGATATAATGTTAGGAGTGAACCAAGGGGAAGGTTAAAAATTTGTTGA
 AAATATAGTAGATAGCGATGATGGTATATCAGCTAGTGATTTTGACTTTGCTGTTTCAAATTTTGTGAT
 AATTTATATGGATATCCTGAAGGCAAAGATGTTTTGAGAGAAACCATTAAGTTCATGTATACTGACTGGG
 CTGACCGTCATAACCCTGAAACCAGAAGAAAGACATTACTGGCTTTGTTACGGACCATCAGTGGGTGGC
 ACCAGCTGTAGCCACAGCGGATCTTCACTCAAACCTTTGGTTACCTACGTA CTCTATGCCTTTTACCAT
 CATTGCCAAACAGATCAGGTTCCAGCTTGGGCTGATGCAGCCACGGAGACGAGGTTCCCTATGTACTGG
 GAATCCCCATGATTGGCCCTACAGAGTTATTTCTTGCAATTTCTCCAAAAATGATGTGATGCTGAGTGC
 AGTTGTAATGACATACTGGACAAATTTTGCTAAAACCTGGTGACCCAAATCAACCAGTCCCTCAAGACAG
 AAATTCATTCATACCAAACCCAACCGTTTTGAAGAAGTAGCATGGACCAGATATCCAGAAAGACCAAC
 TTTATCTCCATATTGGATTAAAACCAAGAGTTAAAGAACATTACAGAGCCAATAAGGTGAACCTCTGGTT
 GGAGTTGGTACCTCATCTGCATAATCTCAATGACATTTCTCAGTATACCTCTACAACAACCTAAAAGTGCCA
 TCAACTGACATCACTTTTACAGACTACGAGAAAAAATCTGTACCTGTCACGTGAGCCTTTCCCACTGCCA
 AGCAGGATGATCCCAAACAACAACCAAGTCCATTTTTCAGTGGATCAAAGGGACTACTCAACAGAGCTGAG
 TGTCACTATTGCAGTTGGAGCATCACTGCTGTTTCTGAACATCTTGGCCTTTGCAGCCCTGTACTACAAA
 AAGGATAAGAGGAGACATGATGTTACAGGAGATGCAGCCCTCAGCGCACTACTACCAATGATCTAACCC
 ATGCACAAGAAGGAAATCATGTCCCTCCAAATGAAGCACACTGATTTGGATCATGAATGTGAGTCCAT
 TCATCCACATGAGGTGGTTCTTCGGACCGCCTGTCCCCAGATTACACACTAGCTATGAGGAGGTCACCT
 GATGATGTTCCCTTAATGACACCCAACACCATTACAATGATTCCAACACTATACCAGGGATTTCAGCCCT
 TACACACATTCAATACATTTACTGGAGGACAGAACAATACTCTGCCCCATCCCCATCCCCACCCCATTC
 ACATTCACAACCAAGGTA

ACGCGTACGCGGCCGCTCGAGCAGAACTCATCTCAGAAGAGGATCTGGCAGCAATGATATCCTGGATT
 ACAAGGATGACGACGATAAGGTTTAA

Protein Sequence: >RC207524 protein sequence
Red=Cloning site Green=Tags(s)

MALPRCTWPNYVWRAVMACLVHRGLGAPLTL CMLGCLLQAGHVL S QKLDDVDPLVATNFGKIRGIKKELN
NEILGPVIQFLGVPYAAPPTGERRFQPPEPPSPWSDIRNATQFAPVCPQNIIDGRLPEVMLPVWFTNNLD
VVSSYVQDQSEDCLYLNIYVPTEDDIRDSGGPKPVMVYIHGGSYMEGTGNLYDGSVLASYGNVIVITVNY
RLGVLGFLSTGDQAAKGNYGLLDLIQALRWTSENI GFFGGDPLRITVFGSGAGGSCVNL L T LSHYSEGNR
WSNSTKGLFQRAIAQSGTALSSWAVSFQPAKYARMLATKVGCVS DTVELVECLQKKPYKELVDQDIQPA
RYHIAFGPVIDGDVIPDDPQILMEQGEFLNYDIMLGVNQGEGLKFVENIVSDDDGISASDFDFAVSNFVD
NLYGYPEGKDVLR ETIKFM YTDWADRHNPE TRRK TLLALFTDHQWVAPAVATADLHSNFGSPTYFYAFYH
HCQTDQVPAWADAAHGDEVYVVLGIPMIGPTELFPCNFSKNDVMLS AVVMTYWTNFAKTGDPNQVPVQDT
KFIHTKPNRFEEVAWTRYSQKDQLYLHIGLKPRVKEHYRANKVNLWLEL VPHLHNLNDISQY TSTTTKVP
STDITFRPTRKNSVPVTSAFPTAKQDDPKQQSPFSVDQRDYSTE LSVTIAVGASLLFLN LAF AALYYK
KDKRRHDVHRRCS PQR TTTNDLTHAQEEEIMSLQMKHTDL DHECESIHPHEVVLRTACPPDYTLAMRRSP
DDVPLMTPNTITMIPNTIPGIQPLHTFNTFTGGQNNTLPHPHPHSHSTTRV

TRTRPLEQKLI SEEDLAANDILDYKDDDDKV

Chromatograms: https://cdn.origene.com/chromatograms/mk6021_c09.zip

Restriction Sites: Sgfl-Mlul

Reconstitution Method:

1. Centrifuge at 5,000xg for 5min.
2. Carefully open the tube and add 100ul of sterile water to dissolve the DNA.
3. Close the tube and incubate for 10 minutes at room temperature.
4. Briefly vortex the tube and then do a quick spin (less than 5000xg) to concentrate the liquid at the bottom.
5. Store the suspended plasmid at -20°C. The DNA is stable for at least one year from date of shipping when stored at -20°C.

RefSeq: [NM_014932.5](#)

RefSeq Size: 4947 bp

RefSeq ORF: 2472 bp

Locus ID: 22871

UniProt ID: [Q8N2Q7](#)

Cytogenetics: 3q26.31

Domains: COesterase

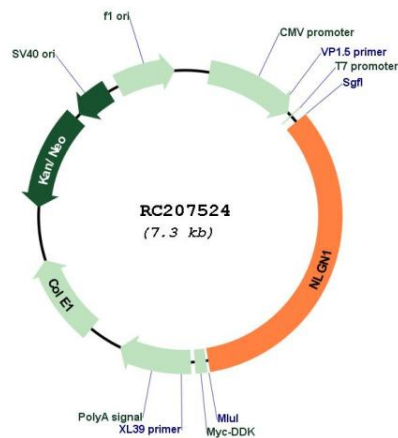
Protein Families: Druggable Genome, Transmembrane

Protein Pathways: Cell adhesion molecules (CAMs)

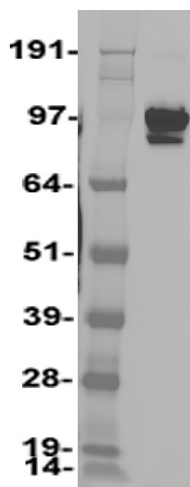
MW: 92 kDa

Gene Summary: This gene encodes a member of a family of neuronal cell surface proteins. Members of this family may act as splice site-specific ligands for beta-neurexins and may be involved in the formation and remodeling of central nervous system synapses. [provided by RefSeq, Jul 2008]

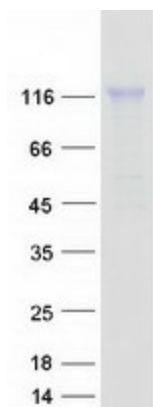
Product images:



Circular map for RC207524



Western blot validation of overexpression lysate (Cat# [LY402393]) using anti-DDK antibody (Cat# [TA50011-100]). Left: Cell lysates from untransfected HEK293T cells; Right: Cell lysates from HEK293T cells transfected with RC207524 using transfection reagent MegaTran 2.0 (Cat# [TT210002]).



Coomassie blue staining of purified NLGN1 protein (Cat# [TP307524]). The protein was produced from HEK293T cells transfected with NLGN1 cDNA clone (Cat# RC207524) using MegaTran 2.0 (Cat# [TT210002]).