

## Product datasheet for **RC207519**

### **IPO11 (NM\_016338) Human Tagged ORF Clone**

#### **Product data:**

Product Type:	Expression Plasmids
Product Name:	IPO11 (NM_016338) Human Tagged ORF Clone
Tag:	Myc-DDK
Symbol:	IPO11
Synonyms:	RanBP11
Mammalian Cell Selection:	Neomycin
Vector:	pCMV6-Entry (PS100001)
E. coli Selection:	Kanamycin (25 ug/mL)



[View online »](#)

**ORF Nucleotide Sequence:**

>RC207519 ORF sequence  
 Red=Cloning site Blue=ORF Green=Tags(s)

TTTTGTAATACGACTCACTATAGGGCGGCCGGAATTCGTCGACTGGATCCGGTACCGAGGAGATCTGCC  
 GCC**CGCATCGCC**

ATGGATCTCAATAGTGCCAGCACTGTTGTTCTTCAGGTGTTAACACAGGCCACCAGTCAGGATACTGCTG  
 TGTTAAAACAGCTGAGGAGCAGTTGAAGCAGTGGGAGACACAGCCAGGTTTCTATTCAAGTGTGCTGAA  
 TATTTTACCAACCACACTTTGGATATAAATGTAAAGTGGCTTGCTGACTGTATTTTAAACATGGAATT  
 GATCGCTACTGGAGACGTGTAGCACCTCATGCTCTCAGAGGAGGAGAAAATACTCTGCGTGCAGGGC  
 TCATCACCAACTTCAATGAACCAATAAACAGATTGCAACTCAGATTGCAGTGTCTATTGCAAAAAGTTGC  
 TAGATTGGATTGTCCAGACAGTGGCCTGAACTAATCCACTCTATAGAGTCTGTTAAAGTCCAGGAT  
 GATCTTCGACAGCACAGACATTACTTACCTTCTATCATGTTACCAAGACTGGCATCTAACGACTTG  
 CTGCTGATAGAAAATAATTTATGATTTAGCTTCTGGAATTTATAATTTTGCCTGCTCTCTGTGGAATCA  
 CCACACAGACACATTCTGCAAGAAGTTTCTTCTGGCAATGAAGCTGCAATTTTGAGTTCCTAGAACGA  
 ACACTGCTATCATTGAAAGTGTGCGTAAGTAACTGTTAATGGATTTGTGGAACCTCATAAGAATATGG  
 AGGTGATGGGTTTTTACATGGAATATTTGAACGTCTAAAACAGTTTCTGGAATGCAGTAGAAGTATAGG  
 TACAGATAATGTTGTAGAGATAGACTGGAAAAGACCATCATTCTTTTACTAAAGTGTCTTTGGACTTC  
 TTGGATCAGCATCCTTTTTCATTACTCCTCTAATTCAGAGATCACTGGAATTTTCTGTAAGCTATGTTT  
 TTACAGAAGTTGGTGAAGGCGTTACATTTGAACGATTCATTGTCCAATGTATGAATCTTATTAAGATGAT  
 TGTCAAAAATATGCTTATAAGCCATCCAAAAATTTTGAAGATAGCAGCCCTGAAACTCTGAAGCCCAT  
 AAGATTAAGATGGCATTCTTACATATCCTACTTTGACAGAGATATGTAGAAGATTAGTCTCTCATTATT  
 TCCTATTAAGTGAAGAAGAACTGACAATGTGGGAAGAAGCCAGAAGGCTTTACAGTGGAAACAGG  
 AGGAGATCTTGAAATATAGTTTGGAGCCATGCACTGAAGTATTTTATAGATATATCCATGAATAT  
 AATCAGACTCTTACTCCTGTACTTCTAGAAATGATGCAAACACTTCAAGGACCCACAAATGTGGAAGATA  
 TGAATGCACTGTTAATCAAAGTGTGTGATAATGCTGTTGGATTAGCTGCTTATGAGCTCTTTGACAG  
 TGTTGATTTTGTAGTGGTTTAAAAACAGCTTCTTCCAGAATTACAAGTCACTTACAATAGGTATAAG  
 CCATTGCGACGCAGGGTATTGGCTCATCGGTCACTGGATTTCTGTGAAATCAAGTCTGACTTAAGAC  
 CCATGCTTATGAAGCAATCTGTAACCTGCTTCAAGATCAAGATTTAGTGGTCCGATTGAAACAGCTAC  
 AACTTTGAAGTAACTGTTGATGATTTTGAATTTAGAACAGATCAGTTTCTACCGTATTTGAAACCATG  
 TTCACACTACTTTTTCAGTTACTGCAGCAAGTTACAGAATGTGACACAAAGATGCATGTTTTGCATGTC  
 TTTCTTGTGTGATCGAAAGAGTCAACATGCAGATACGACCATATGTGGGATGTTGGTACAATATTTGCC  
 CCTCCTTTGGAAGCAGAGTGAAGAACAATATGTTGAGATGTGCTATTTTGACAACACTTATTCATCTT  
 GTTCAGGGATTAGGAGCAGACAGCAAGAACCTGTACCCTTTCTGCTCCCAGTATTCAACTGAGTACAG  
 ATGTTTACAGCCTCCACATGTTTATCTTCTGGAAGATGGTTTAGAATTATGGTTAGTAACTTTGGAAAA  
 CAGTCCATGTATTACACCAGAGTTGCTTCGTATATTTTCAAGATATGTCACCACTTCTTGAAGTAACTCA  
 GAAAATCTTAGAAGTCTTAAAGATCATCAATGGTTATATCTTTTATCATCAACAGAATTTTACAGA  
 CATACGCAGTAGGTCTATGCCAGTCTTTTGTGAACTTTAAAGGAAATTAACAGAAAGTCAAGTTCA  
 GGTGCTCAAGGTTGTGGAAAATGCCCTTAAAGTGAACCAATACTAGTCCACAAATGTTTCAACCGATT  
 TTACCCTATGTTTTCAAGGGTATTATAGAAGGGAGAGGTATCCTGTAGTGTGATGTCACGATCTTGGAG  
 TTATGGGTCGAGTCTACTACAAAACACTAGTTTTTTTTCTTCACTACTAATGAGATGGCCATAAATT  
 TAATCAGGAGATGGACCAGCTTTTGGGAAATATGATTGAAATGTGGGTTGATCGAATGGACAACATTACC  
 CAGCCTGAAAGAAGAAAATTTTCAAGCTTTGGCTTGTCTCTCTTCTGCCATCTGATAATAGTGTATCC  
 AAGATAAATCTGTGGGATTATAAACATTTTCAAGTGAAGGCTGCATGATGTCATGACGGAAGATCTGGA  
 AACAGGAACTTATAAAGACTGTATGTTGATGTCTCATCTTGAAGAACAAAAGTAAACAGAAGATGAAGAA  
 CCACCCACAGAACAAGATAAGAGGAAAAAGATGCTGGCCCTGAAGGACCTGTTTCATACAGTGTCACTGC  
 AGCAGTTCATCTACGAGAAGCTCAAGGCACAGCAGGAGATGCTAGGAGAACAAGGTTTCCAGTCCCTCAT  
 GGAACAGTGGATACGGAGATTGCACCCAGCTACAGGAGTTTTTGAAGGATT

**ACGCGT**ACGCGGCCGCTCGAGCAGAACTCATCTCAGAAGAGGATCTGGCAGCAAATGATATCCTGGATT  
 ACAAGGATGACGACGATAAGGTTTAA

Protein Sequence: >RC207519 protein sequence  
 Red=Cloning site Green=Tags(s)

MDLNSASTVVLQVLTQATSQDTAVLKPAEEQLKQWETQPGFYSVLLNIFTNHTLDINVRWLAVLYFKHGI  
 DRYWRRVAPHALSEEKTTLRAGLITNFNEPINQIATQIAVLIKVARLDCPRQWPELIPTLIESVKVQD  
 DLRQHRALLTFYHVTKTLASKRLAADRKLFYDLASGIYNFACSLWNHHTDFLQEVSSGNEAAILSSLER  
 TLLSLKVLRLKLVNGFVEPHKNMEVMGFLHGIFERLQKQFLECSRSIGTDNVCRRDRLEKTIILFTKVLLDF  
 LDQHPFSFTPLIQRSLFVSYSYVFTEVGEVTFERFIVQCMNLKIMIVKNYAYKPSKNFEDSSPETLEAH  
 KIKMAFFTYPTLTEICRRLVSHYFLLTEEELTMWEEDPEGFTVEETGGDSWKYSLRPCTEVLVIDIFHEY  
 NQTLTPVLLMMQTLQGPTNVEDMNALLIKDAVYNAVGLAAYELFDSVDFDQWFKNQLPELQVIHNRKY  
 PLRRRVIWLIQGWISVKFKSDLRPMLYEAICNLLQDQDLVVRIETATTKLTVDDDFERTDQFLPYLETM  
 FTLLFQLLQQVTECDTKMHVLHVLSCVIERVNMQIRPYVGCLVQYPLLWKQSEEHNMLRCAILTTLIHL  
 VQGLGADSKNLYPFLLPVIQLSTDVVSQPPHYLLEDGLELWLVLENSPCITPELLRIFQNSPILLELSS  
 ENLRTCFKIINGYIFLSSTEFLLQTYAVGLCQSFCELLKEITTEGQVQVLKVVENALKVNPILGPQMFQPI  
 LPYVFKGIIIEGERYPVVMSTYLGVNMRVLLQNTSFFSLLNEMAHKFNQEMDQLLGNMIEMWVDRMDNIT  
 QPERRKLSALALLSLLPDSNSVIQDKFCGIIINISVEGLHDVMTEDPETGTGKDCMLMSHLEEPKVFDEE  
 PPTQDKRKKMLALKDPVHTVSLQQFIYEKLKAQQEMLGEQGFQSLMETVDEIVTQLQEFLLQGF

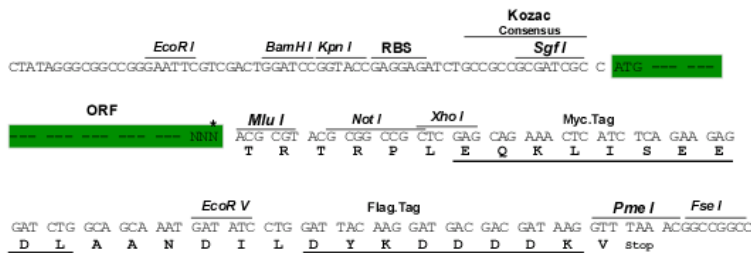
TRTRPLEQKLISEEDLAANDILDYKDDDDKV

Chromatograms: [https://cdn.origene.com/chromatograms/mk6202\\_c06.zip](https://cdn.origene.com/chromatograms/mk6202_c06.zip)

Restriction Sites: SgfI-MluI

Cloning Scheme:

Cloning sites used for ORF Shuttling:



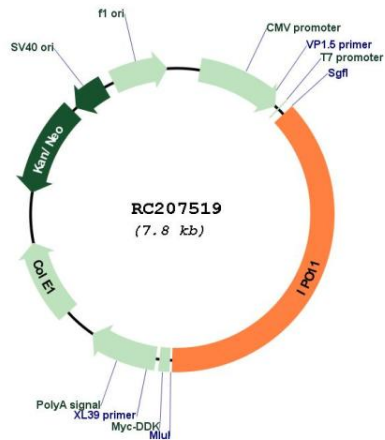
\* The last codon before the Stop codon of the ORF

ACCN: NM\_016338

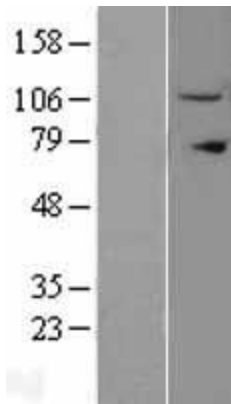
ORF Size: 2925 bp

<b>OTI Disclaimer:</b>	The molecular sequence of this clone aligns with the gene accession number as a point of reference only. However, individual transcript sequences of the same gene can differ through naturally occurring variations (e.g. polymorphisms), each with its own valid existence. This clone is substantially in agreement with the reference, but a complete review of all prevailing variants is recommended prior to use. <a href="#">More info</a>
<b>OTI Annotation:</b>	This clone was engineered to express the complete ORF with an expression tag. Expression varies depending on the nature of the gene.
<b>Components:</b>	The ORF clone is ion-exchange column purified and shipped in a 2D barcoded Matrix tube containing 10ug of transfection-ready, dried plasmid DNA (reconstitute with 100 ul of water).
<b>Reconstitution Method:</b>	<ol style="list-style-type: none"><li>1. Centrifuge at 5,000xg for 5min.</li><li>2. Carefully open the tube and add 100ul of sterile water to dissolve the DNA.</li><li>3. Close the tube and incubate for 10 minutes at room temperature.</li><li>4. Briefly vortex the tube and then do a quick spin (less than 5000xg) to concentrate the liquid at the bottom.</li><li>5. Store the suspended plasmid at -20°C. The DNA is stable for at least one year from date of shipping when stored at -20°C.</li></ol>
<b>RefSeq:</b>	<a href="#">NM_016338.5</a>
<b>RefSeq Size:</b>	4420 bp
<b>RefSeq ORF:</b>	2928 bp
<b>Locus ID:</b>	51194
<b>UniProt ID:</b>	<a href="#">Q9UI26</a>
<b>Cytogenetics:</b>	5q12.1
<b>Domains:</b>	IBN_NT
<b>MW:</b>	112.5 kDa
<b>Gene Summary:</b>	Importins, including IPO11, are a members of the karyopherin/importin-beta family of transport receptors (see KPNB1; 602738) that mediate nucleocytoplasmic transport of protein and RNA cargoes (Plafker and Macara, 2000 [PubMed 11032817]).[supplied by OMIM, Sep 2008]

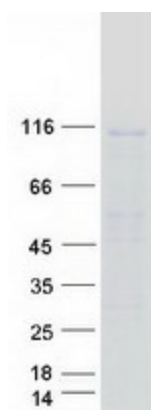
Product images:



Circular map for RC207519



Western blot validation of overexpression lysate (Cat# [LY402541]) using anti-DDK antibody (Cat# [TA50011-100]). Left: Cell lysates from untransfected HEK293T cells; Right: Cell lysates from HEK293T cells transfected with RC207519 using transfection reagent MegaTran 2.0 (Cat# [TT210002]).



Coomassie blue staining of purified IPO11 protein (Cat# [TP307519]). The protein was produced from HEK293T cells transfected with IPO11 cDNA clone (Cat# RC207519) using MegaTran 2.0 (Cat# [TT210002]).