

Product datasheet for RC207517L1

MARCH2 (MARCHF2) (NM_016496) Human Tagged Lenti ORF Clone

Product data:

Product Type:	Expression Plasmids
Product Name:	MARCH2 (MARCHF2) (NM_016496) Human Tagged Lenti ORF Clone
Tag:	Myc-DDK
Symbol:	MARCHF2
Synonyms:	HSPC240; MARCH-II; MARCH2; RNF172
Mammalian Cell Selection:	None
Vector:	pLenti-C-Myc-DDK (PS100064)
E. coli Selection:	Chloramphenicol (34 ug/mL)
ORF Nucleotide Sequence:	The ORF insert of this clone is exactly the same as(RC207517).
Restriction Sites:	SgfI-MluI
Cloning Scheme:	

Cloning sites used for ORF Shuttling:



* The last codon before the Stop codon of the ORF.

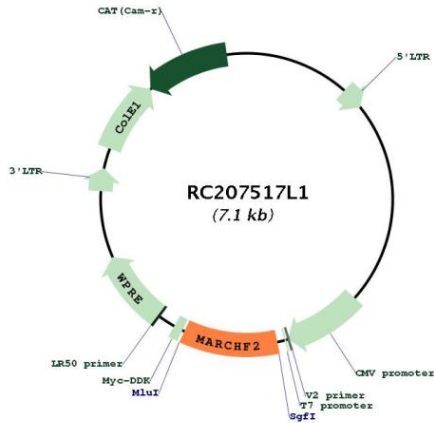
ACCN:	NM_016496
ORF Size:	738 bp



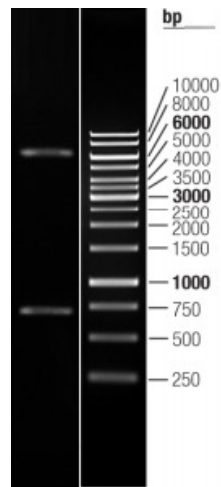
[View online >](#)

OTI Disclaimer:	The molecular sequence of this clone aligns with the gene accession number as a point of reference only. However, individual transcript sequences of the same gene can differ through naturally occurring variations (e.g. polymorphisms), each with its own valid existence. This clone is substantially in agreement with the reference, but a complete review of all prevailing variants is recommended prior to use. More info
OTI Annotation:	This clone was engineered to express the complete ORF with an expression tag. Expression varies depending on the nature of the gene.
Components:	The ORF clone is ion-exchange column purified and shipped in a 2D barcoded Matrix tube containing 10ug of transfection-ready, dried plasmid DNA (reconstitute with 100 ul of water).
Reconstitution Method:	<ol style="list-style-type: none">1. Centrifuge at 5,000xg for 5min.2. Carefully open the tube and add 100ul of sterile water to dissolve the DNA.3. Close the tube and incubate for 10 minutes at room temperature.4. Briefly vortex the tube and then do a quick spin (less than 5000xg) to concentrate the liquid at the bottom.5. Store the suspended plasmid at -20°C. The DNA is stable for at least one year from date of shipping when stored at -20°C.
RefSeq:	NM_016496.4 , NP_057580.2
RefSeq Size:	1705 bp
RefSeq ORF:	741 bp
Locus ID:	51257
UniProt ID:	Q9P0N8
Cytogenetics:	19p13.2
Domains:	RING
Protein Families:	Druggable Genome, Transmembrane
MW:	27 kDa
Gene Summary:	MARCH2 is a member of the MARCH family of membrane-bound E3 ubiquitin ligases (EC 6.3.2.19). MARCH enzymes add ubiquitin (see MIM 191339) to target lysines in substrate proteins, thereby signaling their vesicular transport between membrane compartments. MARCH2 reduces surface accumulation of several glycoproteins and appears to regulate early endosome-to-trans-Golgi network (TGN) trafficking (Bartee et al., 2004 [PubMed 14722266]; Nakamura et al., 2005 [PubMed 15689499]).[supplied by OMIM, Mar 2010]

Product images:



Circular map for RC207517L1



Double digestion of RC207517L1 using SgfI and MluI