

## Product datasheet for **RC207517**

### **MARCHF2 (NM\_016496) Human Tagged ORF Clone**

#### Product data:

**Product Type:** Expression Plasmids  
**Product Name:** MARCHF2 (NM\_016496) Human Tagged ORF Clone  
**Tag:** Myc-DDK  
**Symbol:** MARCHF2  
**Synonyms:** HSPC240; MARCH-II; MARCH2; RNF172  
**Mammalian Cell Selection:** Neomycin  
**Vector:** pCMV6-Entry (PS100001)  
**E. coli Selection:** Kanamycin (25 ug/mL)  
**ORF Nucleotide Sequence:** >RC207517 ORF sequence  
 Red=Cloning site Blue=ORF Green=Tags(s)

TTTTGTAATACGACTCACTATAGGGCGCCGGGAATTCGTCGACTGGATCCGGTACCGAGGAGATCTGCC  
 GCC**CGATCGCC**

ATGACGACGGGTGACTGCTGCCACCTCCCCGGCTCCCTGTGTGACTGCTCCGGCAGCCCTGCCTTCTCCA  
 AGGTCGTGGAGGCTACGGGCCTCGGACCGCCCCAGTATGTGGCACAGGTGACTTCAAGGGATGGCCGGCT  
 CCTCTCCACCGTCATCCGTACCTTGGACACACCGAGTGATGGTCCTTTCTGCCGGATCTGCCATGAGGGA  
 GCGAACGGGGAGTGTCTGTCCCGTGTGGCTGCACCGGCACGCTGGGTGCCGTGCATAAGAGCTGTC  
 TGGAGAAGTGGCTTTCCTCATCTAACACCAGCTACTGCGAGCTGTCCACACGGAGTTTGCAGTGGAGAA  
 ACGGCCTCGACCCCTCACAGAGTGGCTGAAGGACCCGGGCGCGGACGGAAGCGGACACTGTGCTGC  
 GACATGGTGTGTTTCTGTTTCATCACACCGCTGGCCGCCATCTCAGGCTGGTTGTGCCTGCGCGGGGCC  
 AGGACCACCTCCGGCTCCACAGCCAGCTGGAGGCCGTGGGTCTCATTGCCCTCACCATCGCCCTCTTAC  
 CATCTATGTCTCTGGACGCTGGTCTCCTTCCGCTACCACTGCCAGCTGTACTCCGAGTGGAGAAAGACC  
 AACCAGAAAGTTCGCCTGAAGATCCGGGAGCGGACAGCCCCGAGGGCCCCCAGCATTCTCCACTGGCAG  
 CTGGACTCCTGAAGAAGGTGGCAGAGGAGACACCGTA

**ACGCGT**ACGCGGCCGCTCGAGCAGAAACTCATCTCAGAAGAGGATCTGGCAGCAAATGATATCCTGGATT  
 ACAAGGATGACGACGATAAGGTTTAA



[View online »](#)

**Protein Sequence:** >RC207517 protein sequence  
Red=Cloning site Green=Tags(s)

MTTGDCCHLPGSLCDCSGSPAFSKVVEATGLGPPQYVAQVTSRDGRLSTVIRTLDTSPDGPFCRICHEG  
 ANGECLLSPCGCTGTLGAVHKSCLEKWLSSNNTSYCELCHTEFAVEKRPRPLTEWLKDPGRPRTEKRTLCC  
 DMVCFLEITPLAAISGWLCLRGAQDHLRLHSQLEAVGLIALTIALFTIYVLWTLVSFRYHCQLYSEWRKT  
 NQKVRLKIREADSPEGPQHSPLAAGLLKKVAEETPV

TRTRPLEQKLISEEDLAANDILDYKDDDDKV

**Chromatograms:** [https://cdn.origene.com/chromatograms/mk6336\\_d07.zip](https://cdn.origene.com/chromatograms/mk6336_d07.zip)

**Restriction Sites:** SgfI-MluI

**Cloning Scheme:**



**ACCN:** NM\_016496

**ORF Size:** 738 bp

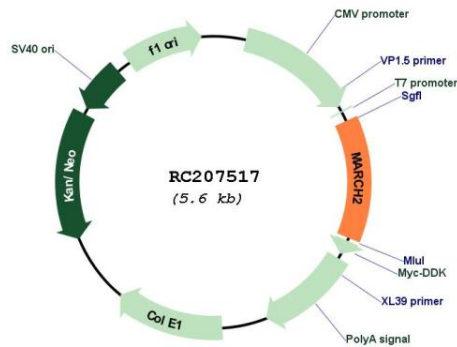
**OTI Disclaimer:** The molecular sequence of this clone aligns with the gene accession number as a point of reference only. However, individual transcript sequences of the same gene can differ through naturally occurring variations (e.g. polymorphisms), each with its own valid existence. This clone is substantially in agreement with the reference, but a complete review of all prevailing variants is recommended prior to use. [More info](#)

**OTI Annotation:** This clone was engineered to express the complete ORF with an expression tag. Expression varies depending on the nature of the gene.

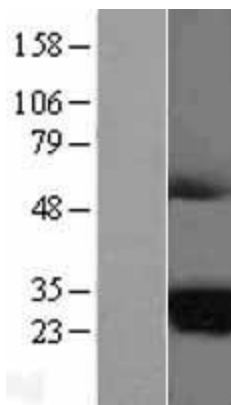
**Components:** The ORF clone is ion-exchange column purified and shipped in a 2D barcoded Matrix tube containing 10ug of transfection-ready, dried plasmid DNA (reconstitute with 100 ul of water).

<b>Reconstitution Method:</b>	<ol style="list-style-type: none"><li>1. Centrifuge at 5,000xg for 5min.</li><li>2. Carefully open the tube and add 100ul of sterile water to dissolve the DNA.</li><li>3. Close the tube and incubate for 10 minutes at room temperature.</li><li>4. Briefly vortex the tube and then do a quick spin (less than 5000xg) to concentrate the liquid at the bottom.</li><li>5. Store the suspended plasmid at -20°C. The DNA is stable for at least one year from date of shipping when stored at -20°C.</li></ol>
<b>Note:</b>	Plasmids are not sterile. For experiments where strict sterility is required, filtration with 0.22um filter is required.
<b>RefSeq:</b>	<u><a href="#">NM_016496.3</a></u> , <u><a href="#">NP_057580.2</a></u>
<b>RefSeq Size:</b>	1705 bp
<b>RefSeq ORF:</b>	741 bp
<b>Locus ID:</b>	51257
<b>UniProt ID:</b>	<u><a href="#">Q9P0N8</a></u>
<b>Cytogenetics:</b>	19p13.2
<b>Domains:</b>	RING
<b>Protein Families:</b>	Druggable Genome, Transmembrane
<b>MW:</b>	27 kDa
<b>Gene Summary:</b>	MARCH2 is a member of the MARCH family of membrane-bound E3 ubiquitin ligases (EC 6.3.2.19). MARCH enzymes add ubiquitin (see MIM 191339) to target lysines in substrate proteins, thereby signaling their vesicular transport between membrane compartments. MARCH2 reduces surface accumulation of several glycoproteins and appears to regulate early endosome-to-trans-Golgi network (TGN) trafficking (Bartee et al., 2004 [PubMed 14722266]; Nakamura et al., 2005 [PubMed 15689499]).[supplied by OMIM, Mar 2010]

Product images:



Circular map for RC207517



Western blot validation of overexpression lysate (Cat# [LY413937]) using anti-DDK antibody (Cat# [TA50011-100]). Left: Cell lysates from untransfected HEK293T cells; Right: Cell lysates from HEK293T cells transfected with RC207517 using transfection reagent MegaTran 2.0 (Cat# [TT210002]).



Coomassie blue staining of purified MARCF2 protein (Cat# [TP307517]). The protein was produced from HEK293T cells transfected with MARCF2 cDNA clone (Cat# RC207517) using MegaTran 2.0 (Cat# [TT210002]).