

Product datasheet for **RC207516**

BET1L (NM_016526) Human Tagged ORF Clone

Product data:

Product Type: Expression Plasmids
Product Name: BET1L (NM_016526) Human Tagged ORF Clone
Tag: Myc-DDK
Symbol: BET1L
Synonyms: BET1L1; GOLIM3; GS15; HSPC197
Mammalian Cell Selection: Neomycin
Vector: pCMV6-Entry (PS100001)
E. coli Selection: Kanamycin (25 ug/mL)
ORF Nucleotide Sequence: >RC207516 ORF sequence
Red=Cloning site Blue=ORF Green=Tags(s)

TTTTGTAATACGACTCACTATAGGGCGGCCGGAATTCGTCGACTGGATCCGGTACCGAGGAGATCTGCC
GCC**CGATCGCC**

ATGGCGGACTGGGCTCGGGCTCAGAGCCCGGGCGCTGTGGAAGAGATTCTAGACCGGAGAAACAAGCGAA
TGGCTGACAGCCTGGCCTCAAAGTCACCAGGCTCAAATCGCTCGCCCTGGACATCGATAGGGATGCAGA
GGATCAGAACCGGTACCTGGATGGCATGGTAAGGGCCACGGTGTGCGTGTATCAGTGCCTGCCCTAGC
ACTACCTGCTGCAGAGCCTGCAGTGTCTCTTCAGCACTGGTCCGGTGGTGGTCAAATCACCCTCT
GTGTGATCTTCTGGGATTCTCCCT

ACGCGTACGCGGCCGCTCGAGCAGAAACTCATCTCAGAAGAGGATCTGGCAGCAAATGATATCCTGGATT
ACAAGGATGACGACGATAAGGTTTAA

Protein Sequence: >RC207516 protein sequence
Red=Cloning site Green=Tags(s)

MADWARAQSPGAVEEILDRENKRMADSLASKVTRLKSLALDIDRDAEDQNRYLDGMVRAHGVRVSVPCPS
TTCRACSVSFSTGAGGWSNHHFCVILLGFLP

TRTRPLEQKLISEEDLAANDILDYKDDDDKV

Chromatograms: https://cdn.origene.com/chromatograms/mk6087_a06.zip

Restriction Sites: SgfI-MluI



[View online »](#)

Cloning Scheme:


ACCN: NM_016526

ORF Size: 306 bp

OTI Disclaimer: The molecular sequence of this clone aligns with the gene accession number as a point of reference only. However, individual transcript sequences of the same gene can differ through naturally occurring variations (e.g. polymorphisms), each with its own valid existence. This clone is substantially in agreement with the reference, but a complete review of all prevailing variants is recommended prior to use. [More info](#)

OTI Annotation: This clone was engineered to express the complete ORF with an expression tag. Expression varies depending on the nature of the gene.

Components: The ORF clone is ion-exchange column purified and shipped in a 2D barcoded Matrix tube containing 10ug of transfection-ready, dried plasmid DNA (reconstitute with 100 ul of water).

Reconstitution Method:

1. Centrifuge at 5,000xg for 5min.
2. Carefully open the tube and add 100ul of sterile water to dissolve the DNA.
3. Close the tube and incubate for 10 minutes at room temperature.
4. Briefly vortex the tube and then do a quick spin (less than 5000xg) to concentrate the liquid at the bottom.
5. Store the suspended plasmid at -20°C. The DNA is stable for at least one year from date of shipping when stored at -20°C.

RefSeq: [NM_016526.4](#)

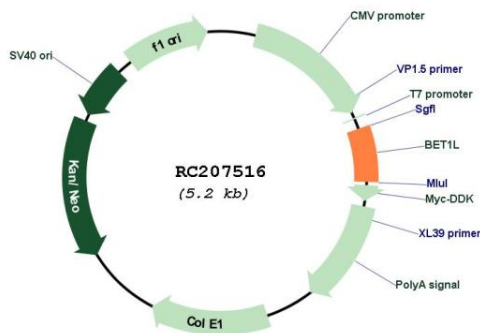
RefSeq Size: 2971 bp

RefSeq ORF: 309 bp

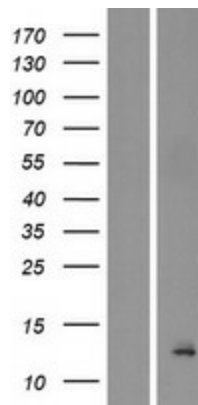
Locus ID: 51272

Cytogenetics: 11p15.5
Protein Families: Transmembrane
Protein Pathways: SNARE interactions in vesicular transport
MW: 11.1 kDa
Gene Summary: Vesicle SNARE required for targeting and fusion of retrograde transport vesicles with the Golgi complex. Required for the integrity of the Golgi complex (By similarity).
 [UniProtKB/Swiss-Prot Function]

Product images:



Circular map for RC207516



Western blot validation of overexpression lysate (Cat# [LY402560]) using anti-DDK antibody (Cat# [TA50011-100]). Left: Cell lysates from untransfected HEK293T cells; Right: Cell lysates from HEK293T cells transfected with RC207516 using transfection reagent MegaTran 2.0 (Cat# [TT210002]).