

Product datasheet for RC207509

Keratocan (KERA) (NM_007035) Human Tagged ORF Clone

Product data:

Product Type:	Expression Plasmids
Product Name:	Keratocan (KERA) (NM_007035) Human Tagged ORF Clone
Tag:	Myc-DDK
Symbol:	Keratocan
Synonyms:	CNA2; KTN; SLRR2B
Mammalian Cell Selection:	Neomycin
Vector:	pCMV6-Entry (PS100001)
E. coli Selection:	Kanamycin (25 ug/mL)
ORF Nucleotide Sequence:	>RC207509 ORF sequence Red=Cloning site Blue=ORF Green=Tags(s)

TTTTGTAATACGACTCACTATAGGGCGGCCGGAATTCGTCGACTGGATCCGGTACCGAGGAGATCTGCC
GCC**CGATCGCC**

ATGGCAGGCACAATCTGTTTCATCATGTGGGTGTTATTCATAACAGACACTGTGTGGTCTAGAAGTGTAAGGCAGGTCTAAGTACATGATTCAGATGATTGGACTATTCAGACTTCGAGTGTCCCATGGAATGTTCTGCCACCCAGTTTTCTACTGCTTTATATTGTGAAAATAGAGGTCTCAAAGAAATTCCTGCTATTCTTCAAGAATTTGGTATCTTTATCTTCAAACAACCTGATAGAAACCATTCTGAAAAGCCATTTGAGAATGCCCCAGCTAAGATGGATAAATCTAAACAAGAACAATAACCAACTACGGAATTGAAAAGGAGCCCTAAGCCAGCTGAAGAAGTTGCTCTTCTTATTTCTGGAAGATAATGAGCTAGAGGAGGTACCTTCTCCATTGCCAAGAAGTTTAGAACAATTACAATTAGCTAGAAATAAGGTGTCCAGAATTCCTCAAGGGACCTTTAGCAATCTGGAGAACCTGACCTTCTTGACCTACAGAACAACAATTAGTGGACAATGCCTTTCAAAGAGACACTTTTAAAGGACTCAAGAATCTCATGCAGCTAAACATGGCCAAGAATGCCCTGAGGAATATGCCTCCAAGATTACCAGCCAATACAATGCAGTTGTTTTAGACAACAATTCATTGAAGGAATACCAGAAAATATTTTTATGTGATTCCTAAAGTGGCCTTTTTGAGACTAAATCACAACAACCTGTGAGTGGAGGTCTCCCATCAAGAGGATTTGATGTATCATCAATTCTAGATCTTCAACTGTGCGACAATCAACTCACAAGGTTCCCGAATCAGTGCTCATCTGCAGCACCTTCACTTGATCATAACAAAATTAAGTGTGAATGTCTGTAATATGTCACAGCCCATCCATGCTGCCTGCAGAACGAGATTCCTTCAGTTATGGACCTCATCTTCGCTACCTCGTCTGGATGGAATGAAATCAAACCACCAATTCGAATGGCTTTAATGACCTGCTTCAGACTTCTGCAGGCTGCTATTATT

ACGCGTACGCGGCCGCTCGAGCAGAACTCATCTCAGAAGAGGATCTGGCAGCAATGATATCCTGGATT
ACAAGGATGACGACGATAAGGTTAA



[View online »](#)

Protein Sequence: >RC207509 protein sequence
Red=Cloning site Green=Tags(s)

MAGTICFIMWVLFITDTVWSRSVRQVYEVHSDDDWTIHFECPCMEFCPPSFPTALYCENRGLKEIPAIP
 SRIWYL YLQNNL IETIPEKPFENATQLRWINLNKNKITNYGIEKALSQKLLFLFLEDNEEEVPSPL
 PRSLEQLQLARNKVSRIPOGTF SNLENL TLLDLQNNKLVDNAFQRDTFKGLKNLMQLNMAKNALRNMP
 LPANTMQLFLDNN SIEGIPENYFNVIPKVAFLRLNHNKLSDEGLPSRGFVSSILDQLSHNQLTKVPRI
 SAHLQHLHLDHNKIKSVNYSVICPSPMLPAERDSF SYGPHRLRYLRDGN EIKPPIPMALMTCFRLLQAV
 II

TRTRPLEQKLISEEDLAANDILDYKDDDDKV

Chromatograms: https://cdn.origene.com/chromatograms/mk6336_b02.zip

Restriction Sites: SgfI-MluI

Cloning Scheme:



* The last codon before the Stop codon of the ORF

ACCN: NM_007035

ORF Size: 1056 bp

OTI Disclaimer: The molecular sequence of this clone aligns with the gene accession number as a point of reference only. However, individual transcript sequences of the same gene can differ through naturally occurring variations (e.g. polymorphisms), each with its own valid existence. This clone is substantially in agreement with the reference, but a complete review of all prevailing variants is recommended prior to use. [More info](#)

OTI Annotation: This clone was engineered to express the complete ORF with an expression tag. Expression varies depending on the nature of the gene.

Components: The ORF clone is ion-exchange column purified and shipped in a 2D barcoded Matrix tube containing 10ug of transfection-ready, dried plasmid DNA (reconstitute with 100 ul of water).

Reconstitution Method:

1. Centrifuge at 5,000xg for 5min.
2. Carefully open the tube and add 100ul of sterile water to dissolve the DNA.
3. Close the tube and incubate for 10 minutes at room temperature.
4. Briefly vortex the tube and then do a quick spin (less than 5000xg) to concentrate the liquid at the bottom.
5. Store the suspended plasmid at -20°C. The DNA is stable for at least one year from date of shipping when stored at -20°C.

RefSeq: [NM_007035.4](#)

RefSeq Size: 2543 bp

RefSeq ORF: 1059 bp

Locus ID: 11081

UniProt ID: [O60938](#)

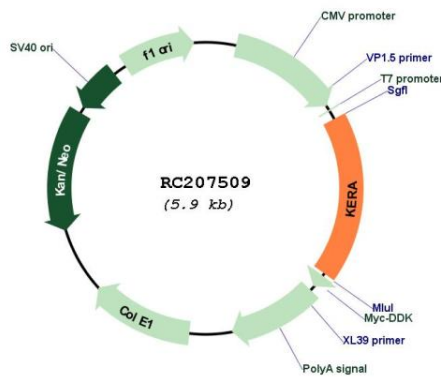
Cytogenetics: 12q21.33

Protein Families: Secreted Protein

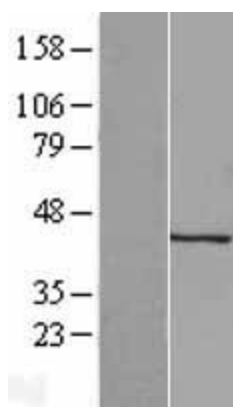
MW: 40.5 kDa

Gene Summary: The protein encoded by this gene is a keratan sulfate proteoglycan that is involved in corneal transparency. Defects in this gene are a cause of autosomal recessive cornea plana 2 (CNA2). [provided by RefSeq, May 2010]

Product images:



Circular map for RC207509



Western blot validation of overexpression lysate (Cat# [LY416127]) using anti-DDK antibody (Cat# [TA50011-100]). Left: Cell lysates from untransfected HEK293T cells; Right: Cell lysates from HEK293T cells transfected with RC207509 using transfection reagent MegaTran 2.0 (Cat# [TT210002]).