

Product datasheet for RC207501

Centaurin alpha 2 (ADAP2) (NM_018404) Human Tagged ORF Clone

Product data:

Product Type:	Expression Plasmids
Product Name:	Centaurin alpha 2 (ADAP2) (NM_018404) Human Tagged ORF Clone
Tag:	Myc-DDK
Symbol:	Centaurin alpha 2
Synonyms:	cent-b; CENTA2; HSA272195
Mammalian Cell Selection:	Neomycin
Vector:	pCMV6-Entry (PS100001)
E. coli Selection:	Kanamycin (25 ug/mL)
ORF Nucleotide Sequence:	>RC207501 ORF sequence Red=Cloning site Blue=ORF Green=Tags(s)

CTATAGGGCGCCGGGAATTCGTCGACTGGATCCGGTACCGAGGAGATCTGCCGCCGCGATCGCCGGCGC
GCC

ATGGGCGATCGCGAGCGCAACAAGAAGCGGCTGCTGGAGCTGCTGCGGGCGCCGGACACAGGCAACGCGC
ACTGCGCCGACTGCGGGCGGCAGATCCCGACTGGCCTTTACAAGCTGGGGATCTTCTGTCTCAA
CTGCTGCGGCGTCCACCGTAACCTCCCTGACATCAGCAGAGTTAAATCTGTGCGACTTGACTTCTGGGAC
GACAGTATTGTGGAGTTTATGATCCACAATGAAACCTCCGTGTGAAGGCCAAGTTCGAAGCCAGAGTCC
CAGCTTTCTACTACATCCCCAGGCCAAGACTGCCTGGTCTTAAAGGAACAATGGATTCGAGCTAAGTA
TGAGAGACGGGAATTTATGGCTGATGGGAAACCATCTCGCTCCCAGGTAACCGAGAAGGATTCCTGTGG
AAGCGAGGAAGGGACAACCTCACAGTTTCTGAGAAGGAAGTTTGTACTTCTGGCAAGAGAAGGCCCTCTGA
AGTACTTCACAAAGGAACAGGGTAAAAGCCCCAAAGCTGTCATCAGCATTAAAGGACTTGAATGCCACCTT
CCAGACAGAGAAGATAGGGCACCCCAATGGGCTGCAGATCACCTACAGGAGAGATGGCCACACCAGGAAC
CTGTTTGTGATCATGAAAGTGGGAAGGAGATAGTGGACTGGTTCAATGCCCTCCGTGCAGCCCGTCTGC
AGTACCTAAAAATGGCCTTCTGAACTCCAGAGTCTGAGCTCGTGCCATTCTCACCAGGAACACTCT
CAACAAGGCTTCATGAAAAAGACTGGGCCAAAGAAAGAACCTTCAAGAAAAGGTGGTTTCGCCCTGGAT
TGCCATGAGCGGAGGCTGCTCTATTACAAGAACCCTGGATGCCTTCGAGCAGGGCCAGTCTTTCTTG
GGAACAAGGAGCAGGGATATGAAGCCTACGAAGACCTGCCAAGGGCATCCGAGGAAATCGCTGGAAGC
CGGACTACCATTGTACCCAGAGCGGAGATTTGTCCTCACTTGCCCCAGTGAGAAGGAACAGCAGGAA
TGGCTGGAAGTTTGGGGGTGTCCTGTCCAGCCCTTGACGCCCTCAACCGGCTTACTGCATCAACAG
AGAGTGGCCGACGAGCAGG

ACGCGTACGCGGCCGCTCGAGCAGAACTCATCTCAGAAGAGGATCTGGCAGCAATGATATCCTGGATT
ACAAGGATGACGACGATAAGGTTTAA



[View online >](#)

Protein Sequence: >RC207501 protein sequence
Red=Cloning site Green=Tags(s)

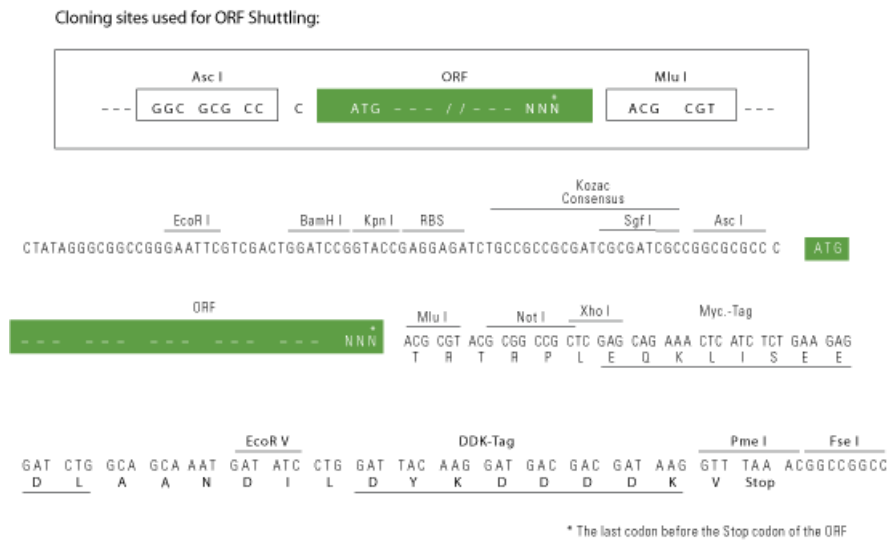
MGDRERNKKRLELLRAPDTGNAHCADCGAADPDWASYKLGIFICLNCCGVHRNFPDISRVKSVRLDFWD
 DSIVFMIHNGNLRVKAKFEARVPAFYYIPQANDCLVLKEQWIRAKYERREFMADGETISLPGNREGFLW
 KRGRDNSQFLRRKFVLLAREGLLKYFTKEQGKSPKAVISIKDLNATFQTEKIGHPHGLQITYRRDGHTRN
 LFVYHESGKEIVDFWNLRAARLQYLKMAFPELPESELVPFLTRNYLKQGFMEKTGPKKEPFKKRWFALD
 CHERRLLYYKNPLDAFEQGVFLGNKEQGYEAYEDLPKGIRGNRWKAGLTI VTPERRFVLTCPSEKEQQE
 WLESLRGVLSPLTPLNRLTASTESGRSSR

TRTRPLEQKLISEEDLAANDILDYKDDDDKV

Chromatograms: https://cdn.origene.com/chromatograms/mk6809_h08.zip

Restriction Sites: AscI-MluI

Cloning Scheme:



ACCN: NM_018404

ORF Size: 1392 bp

OTI Disclaimer: The molecular sequence of this clone aligns with the gene accession number as a point of reference only. However, individual transcript sequences of the same gene can differ through naturally occurring variations (e.g. polymorphisms), each with its own valid existence. This clone is substantially in agreement with the reference, but a complete review of all prevailing variants is recommended prior to use. [More info](#)

OTI Annotation: This clone was engineered to express the complete ORF with an expression tag. Expression varies depending on the nature of the gene.

Components: The ORF clone is ion-exchange column purified and shipped in a 2D barcoded Matrix tube containing 10ug of transfection-ready, dried plasmid DNA (reconstitute with 100 ul of water).

- Reconstitution Method:**
1. Centrifuge at 5,000xg for 5min.
 2. Carefully open the tube and add 100ul of sterile water to dissolve the DNA.
 3. Close the tube and incubate for 10 minutes at room temperature.
 4. Briefly vortex the tube and then do a quick spin (less than 5000xg) to concentrate the liquid at the bottom.
 5. Store the suspended plasmid at -20°C. The DNA is stable for at least one year from date of shipping when stored at -20°C.

RefSeq: [NM_018404.3](#)

RefSeq Size: 2757 bp

RefSeq ORF: 1146 bp

Locus ID: 55803

UniProt ID: [Q9NPF8](#)

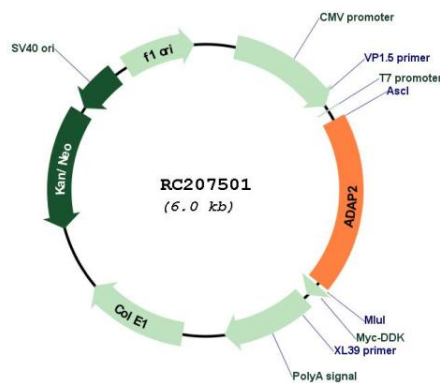
Cytogenetics: 17q11.2

Domains: ArfGap, PH

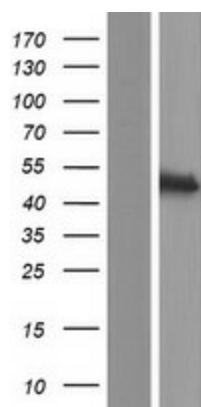
MW: 44.2 kDa

Gene Summary: The protein encoded by this gene binds beta-tubulin and increases the stability of microtubules. The encoded protein can also translocate to the cell membrane and bind phosphatidylinositol 3,4,5-trisphosphate (PtdInsP3) and inositol 1,3,4,5-tetrakisphosphate (InsP4). In addition, this protein is a GTPase-activating protein for ADP ribosylation factor 6 and may be able to block the entry of some RNA viruses. [provided by RefSeq, Oct 2016]

Product images:



Circular map for RC207501



Western blot validation of overexpression lysate (Cat# [LY413076]) using anti-DDK antibody (Cat# [TA50011-100]). Left: Cell lysates from untransfected HEK293T cells; Right: Cell lysates from HEK293T cells transfected with RC207501 using transfection reagent MegaTran 2.0 (Cat# [TT210002]).