

## Product datasheet for RC207500

### TMEM126B (NM\_018480) Human Tagged ORF Clone

#### Product data:

**Product Type:** Expression Plasmids  
**Product Name:** TMEM126B (NM\_018480) Human Tagged ORF Clone  
**Tag:** Myc-DDK  
**Symbol:** TMEM126B  
**Synonyms:** HT007; MC1DN29  
**Mammalian Cell Selection:** Neomycin  
**Vector:** pCMV6-Entry (PS100001)  
**E. coli Selection:** Kanamycin (25 ug/mL)  
**ORF Nucleotide Sequence:** >RC207500 representing NM\_018480  
 Red=Cloning site Blue=ORF Green=Tags(s)

TTTTGTAATACGACTCACTATAGGGCGGCCGGAATTCGTCGACTGGATCCGGTACCGAGGAGATCTGCC  
 GCCCGCATCGCC

ATGGCAGCATCTATGCATGGTCAGCCCAGTCCTTCTCTAGAAGATGCAAACTCAGAAGACCAATGGTCA  
 TAGAAATCATAGAAAAAATTTGACTATCTTAGAAAAGAAATGACACAAAATATATATCAAATGGCGAC  
 ATTTGGAACAACAGCTGGTTTCTCTGGAATATTCTCAAACCTTCTGTTCCAGACGCTGCTCAAGGTAAA  
 CATGATGCTTTGAAGACATATGCATCATTGGCTACACTCCATTTTTGTCTACTGTTGTTACTGACAAGC  
 TTTTTGTAATTGATGCTTTGTATTTCAGATAATATAAGCAAGGAAAACGTGTTTTTCAGAAGCTCACTGAT  
 TGGCATAGTTTGTGGTGTCTTCTATCCCAGTCTTTGGCTTTTACTAAAAATGGACGCCTGGCAACCAAG  
 TATCATACCGTTCCTACTGCCACCAAAAGGAAGGTTTTAATCCATTGGATGACGCTTTGTCAAAACAAA  
 TGAAATTAATGGTGATTCTCTAGTCTTTCAGATTATGTTTGAATATTAATGGTCTATACCATTATGC  
 AGTATTTGAAGAGACTTGAGAAAACATACATGAAGAG

ACGCGTACGCGGCCGCTCGAGCAGAAAACATCTCAGAAGAGGATCTGGCAGCAAATGATATCCTGGATT  
 ACAAGGATGACGACGATAAGGTTTAA

**Protein Sequence:** >RC207500 representing NM\_018480  
 Red=Cloning site Green=Tags(s)

MAASMHGQPSPLEDAKLRRPMVIEIEKNFDYLRKEMTQNIYQMATFGTTAGFSGIFSNFLFRRCFKVK  
 HDALKTYASLATLPFLSTVVTDKLFVIDALYSDNISKENCVFRSSLIGIVCGVFYPSSLAFTKNGRLATK  
 YHTVPLPPKGRVLIHWMTLCTQMKLMVIPLVFQIMFGILNGLYHYAVFEETLEKTIHEE

TRTRPLEQKLISEEDLAANDILDYKDDDDKV



[View online »](#)

Chromatograms: [https://cdn.origene.com/chromatograms/ja1443\\_h10.zip](https://cdn.origene.com/chromatograms/ja1443_h10.zip)

Restriction Sites: SgfI-MluI

Cloning Scheme:



ACCN: NM\_018480

ORF Size: 600 bp

OTI Disclaimer: The molecular sequence of this clone aligns with the gene accession number as a point of reference only. However, individual transcript sequences of the same gene can differ through naturally occurring variations (e.g. polymorphisms), each with its own valid existence. This clone is substantially in agreement with the reference, but a complete review of all prevailing variants is recommended prior to use. [More info](#)

OTI Annotation: This clone was engineered to express the complete ORF with an expression tag. Expression varies depending on the nature of the gene.

Components: The ORF clone is ion-exchange column purified and shipped in a 2D barcoded Matrix tube containing 10ug of transfection-ready, dried plasmid DNA (reconstitute with 100 ul of water).

Reconstitution Method:

1. Centrifuge at 5,000xg for 5min.
2. Carefully open the tube and add 100ul of sterile water to dissolve the DNA.
3. Close the tube and incubate for 10 minutes at room temperature.
4. Briefly vortex the tube and then do a quick spin (less than 5000xg) to concentrate the liquid at the bottom.
5. Store the suspended plasmid at -20°C. The DNA is stable for at least one year from date of shipping when stored at -20°C.

RefSeq: [NM\\_018480.2](#), [NP\\_060950.2](#)

RefSeq Size: 1038 bp

RefSeq ORF: 693 bp

Locus ID: 55863

UniProt ID: [Q8IUX1](#)

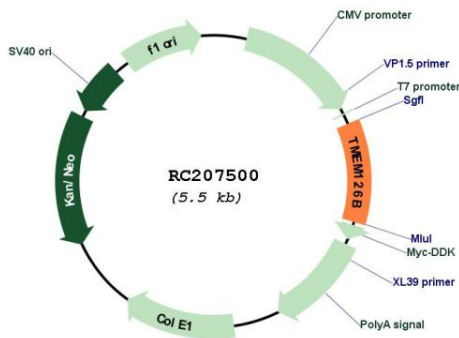
Cytogenetics: 11q14.1

Protein Families: Transmembrane

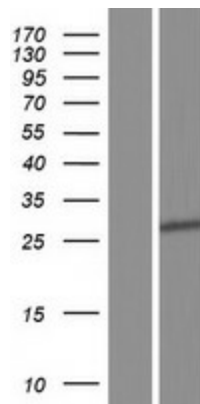
MW: 22.8 kDa

**Gene Summary:** This gene encodes a mitochondrial transmembrane protein which is a component of the mitochondrial complex I assembly complex. The encoded protein serves as an assembly factor that is required for formation of the membrane arm of the complex. It interacts with NADH dehydrogenase [ubiquinone] 1 alpha subcomplex assembly factor 13. Naturally occurring mutations in this gene are associated with isolated complex I deficiency. A pseudogene of this gene has been defined on chromosome 9. [provided by RefSeq, Apr 2017]

**Product images:**



Circular map for RC207500



Western blot validation of overexpression lysate (Cat# [LY433772]) using anti-DDK antibody (Cat# [TA50011-100]). Left: Cell lysates from untransfected HEK293T cells; Right: Cell lysates from HEK293T cells transfected with [RC230773] using transfection reagent MegaTran 2.0 (Cat# [TT210002]).