

Product datasheet for **RC207491**

CPA6 (NM_020361) Human Tagged ORF Clone

Product data:

| | |
|---------------------------|---|
| Product Type: | Expression Plasmids |
| Product Name: | CPA6 (NM_020361) Human Tagged ORF Clone |
| Tag: | Myc-DDK |
| Symbol: | CPA6 |
| Synonyms: | CPAH; ETL5; FEB11 |
| Mammalian Cell Selection: | Neomycin |
| Vector: | pCMV6-Entry (PS100001) |
| E. coli Selection: | Kanamycin (25 ug/mL) |



[View online »](#)

ORF Nucleotide
Sequence:

>RC207491 ORF sequence
Red=Cloning site Blue=ORF Green=Tags(s)

TTTTGTAATACGACTCACTATAGGGCGGCCGGGAATTCGTCGACTGGATCCGGTACCGAGGAGATCTGCC
GCCGCGATCGCC

ATGAAGTGTCTCGGAAGCGCAGGGGCCAGGCAGCTGCTTTCCTGCCTCTTTGCTGGCTCTTTTGAAGA
TTCTGCAACCGGGCACAGCCACCTTTATAACAACCGCTATGCTGGTGATAAAGTGATAAGATTTATTCC
CAAACAGAAGAGGAAGCATATGCACTGAAGAAAATATCCTATCAACTTAAGGTGGACCTGTGGCAGCCC
AGCAGTATCTCCTATGTATCAGAGGGAACAGTTACTGATGTCCATATCCCCAAAATGGTCCCGAGCCC
TGTTAGCCTTCTTACAGGAAGCCAACATCCAGTACAAGTCCCTCATAGAAGATCTTCAGAAAACACTGGA
GAAGGGAAGCAGCTTGCACACCCAGAGAAACCGAAGATCCCTCTCTGGATATAATTATGAAGTTTATCAC
TCCTTAGAAGAAATCAAATTTGGATGCATCATCTGAATAAACTCACTCAGGCCTATTACATGTTCT
CTATTGGAAGATCATATGAGGGAAGATGTCTTTTTATTTAAAGTGGGCAGACGATCACGACTCAAAG
AGCTGTTTGGATAGACTGTGGTATTCATGCAAGAGAATGGATTGGTCTGCCTTTTGTGAGTGGTTTGA
AAAGAAGCTCTTCAACATATAAGAGTGACCCAGCCATGAGAAAATGTTGAATCATCTATATTTCTATA
TCATGCCTGTGTTAACGTCGATGGATACCATTTTAGTTGGACCAATGATCGATTTTGGAGAAAAACAAG
GTCAAGGAACTCAAGTTTCGCTGCCGTGGAGTGGATGCCAATAGAACTGGAAAGTGAAGTGGTGTGAT
GAAGGAGCTTCTATGCACCCTTGTGATGACACATACTGTGCCCTTTCCAGAATCTGAGCCGGAAGTGA
AGGCTGTAGCTAACTTCCTTCGAAAACACAGAAAGCACATTAGGGCTTATCTCTCCTTTCATGCATATGC
TCAGATGTTACTGTATCCCTATCTTACAAATATGCAACAATCCCAATTTAGATGTGTGGAATCTGCA
GCTTATAAAGCTGTGAATGCACCTCAGTCAGTACGCGGTACGATACAGATATGGACCAGCCTCCACAA
CGTTGTATGTGAGCTCTGGTAGCTCAATGGATTGGCCTACAAAAATGGAATACCTTATGCATTTGCTTT
CGAACTACGTGACACTGGATATTTGGATTTTACTCCAGAGATGCTCATCAAACCCACCTGTACAGAA
ACTATGCTGGCTGTGAAAAATATACAATGCACCTGCTAAAGAAATGTCCC

ACGCGTACGCGGCCGCTCGAGCAGAACTCATCTCAGAAGAGGATCTGGCAGCAATGATATCCTGGATT
ACAAGGATGACGACGATAAGGTTTAA

Protein Sequence:

>RC207491 protein sequence
Red=Cloning site Green=Tags(s)

MKCLGKRRGQAAAFPLCWLFLKILQPGHSHLYNNRYAGDKVIRFIPKTEEEAYALKKISYQLKVDLWQP
SSISYVSEGTVDVHIPQNGSRALLAFLQEANIYKVLIEDLQKLEKGSLSHTQRNRRSLSGYNYEVYH
SLEEIQNMHHLNKTSHGLIHMFSIGRSYEGRCFLFKLGRSRLKRAVWIDCGIHAREWIGPAFCQWV
KEALLTYKSDPAMRKMLNHLFYIMPVFNVDGYHFSWTNDRFWRKTRSRNSRFRRCRGVDANRNWKVKWCD
EGASMHPCCDDTYCGPFPESEPEVKAVANFLRKHRRKHIRAYLSFHAYAQMMLLYPYSYKYATIPNFRCVESA
AYKAVNALQSVYGVRYRYGPASTTLYVSSGSSMDWAYKNGIPYAFAFELRDTGYFGFLLPEMLIKPTCTE
TMLAVKNIITMHLKCP

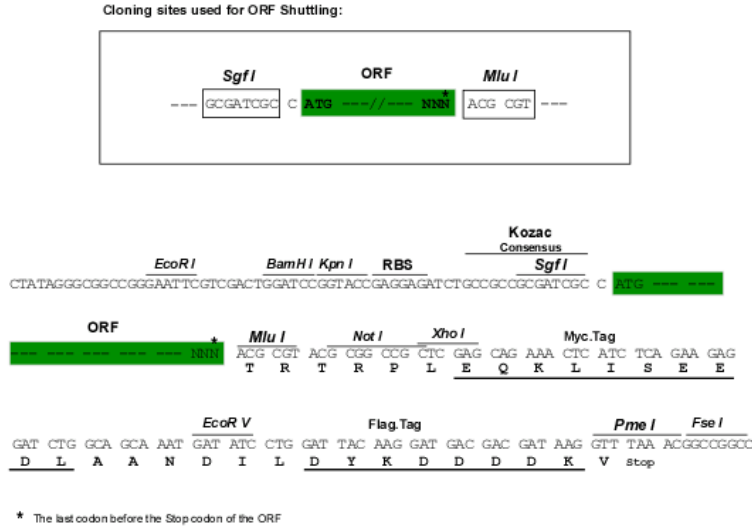
TRTRPLEQKLISEEDLAANDILDYKDDDDKV

Chromatograms:

https://cdn.origene.com/chromatograms/mk6518_h09.zip

Restriction Sites:

SgfI-MluI

Cloning Scheme:


ACCN: NM_020361

ORF Size: 1311 bp

OTI Disclaimer: The molecular sequence of this clone aligns with the gene accession number as a point of reference only. However, individual transcript sequences of the same gene can differ through naturally occurring variations (e.g. polymorphisms), each with its own valid existence. This clone is substantially in agreement with the reference, but a complete review of all prevailing variants is recommended prior to use. [More info](#)

OTI Annotation: This clone was engineered to express the complete ORF with an expression tag. Expression varies depending on the nature of the gene.

Components: The ORF clone is ion-exchange column purified and shipped in a 2D barcoded Matrix tube containing 10ug of transfection-ready, dried plasmid DNA (reconstitute with 100 ul of water).

Reconstitution Method:

1. Centrifuge at 5,000xg for 5min.
2. Carefully open the tube and add 100ul of sterile water to dissolve the DNA.
3. Close the tube and incubate for 10 minutes at room temperature.
4. Briefly vortex the tube and then do a quick spin (less than 5000xg) to concentrate the liquid at the bottom.
5. Store the suspended plasmid at -20°C. The DNA is stable for at least one year from date of shipping when stored at -20°C.

RefSeq: [NM_020361.3](#)

RefSeq Size: 1907 bp

RefSeq ORF: 1314 bp

Locus ID: 57094

UniProt ID: [Q8N4T0](#)

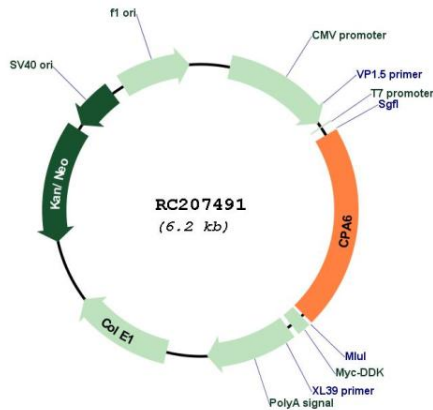
Cytogenetics: 8q13.2

Protein Families: Protease, Secreted Protein

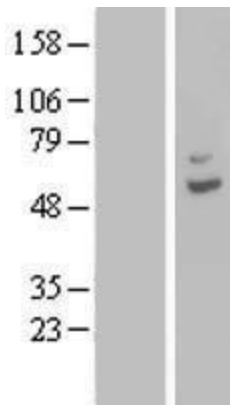
MW: 51 kDa

Gene Summary: The gene encodes a member of the peptidase M14 family of metalloproteases. The encoded preproprotein is proteolytically processed to generate the mature enzyme, which catalyzes the release of large hydrophobic C-terminal amino acids. This enzyme has functions ranging from digestion of food to selective biosynthesis of neuroendocrine peptides. Mutations in this gene may be linked to epilepsy and febrile seizures, and a translocation t(6;8)(q26;q13) involving this gene has been associated with Duane retraction syndrome. [provided by RefSeq, May 2016]

Product images:



Circular map for RC207491



Western blot validation of overexpression lysate (Cat# [LY412531]) using anti-DDK antibody (Cat# [TA50011-100]). Left: Cell lysates from untransfected HEK293T cells; Right: Cell lysates from HEK293T cells transfected with RC207491 using transfection reagent MegaTran 2.0 (Cat# [TT210002]).