

## Product datasheet for **RC207487**

### CD64 (FCGR1A) (NM\_000566) Human Tagged ORF Clone

#### Product data:

Product Type:	Expression Plasmids
Product Name:	CD64 (FCGR1A) (NM_000566) Human Tagged ORF Clone
Tag:	Myc-DDK
Symbol:	CD64
Synonyms:	CD64; CD64A; FCRI; IGFR1
Mammalian Cell Selection:	Neomycin
Vector:	pCMV6-Entry (PS100001)
E. coli Selection:	Kanamycin (25 ug/mL)
ORF Nucleotide Sequence:	>RC207487 ORF sequence Red=Cloning site Blue=ORF Green=Tags(s)

TTTTGTAATACGACTCACTATAGGGCGCCGGGAATTCGTCGACTGGATCCGGTACCGAGGAGATCTGCC  
GCC**CGGATCGCC**

ATGTGGTCTTGACAACCTGCTCCTTTGGGTTCCAGTTGATGGGCAAGTGGACACCACAAAGGCAGTGA  
TCACTTTGCAGCCTCCATGGGTGAGCGTGTCCAAAGGAAACCGTAACCTTGCATTGTGAGGTGCTCCA  
TCTGCCTGGGAGCAGCTTACACAGTGGTTTCTCAATGGCACAGCCACTCAGACCTCGACCCCGAGCTAC  
AGAATCACCTCTGCCAGTGTCAATGACAGTGGTGAATACAGGTGCCAGAGAGGTCTCTCAGGGCGAAGTG  
ACCCCATACAGCTGGAATCCACAGAGGCTGGCTACTACTGCAGGTCTCCAGCAGAGTCTTCACGGAAGG  
AGAACCTCTGGCCTTGGAGGTGCATGCGTGAAGGATAAGCTGGTGTACAATGTGCTTTACTATCGAAAT  
GGCAAAGCCTTTAAGTTTTTCCACTGGAATTCTAACCTCACCTTCTGAAAACCAACATAAGTCACAATG  
GCACCTACCATTGCTCAGGCATGGGAAAGCATCGCTACACATCAGCAGGAATATCTGTCAGTGTGAAAGA  
GCTATTTCCAGCTCCAGTGTGAATGCATCTGTGACATCCCCACTCCTGGAGGGGAATCTGGTCACCCTG  
AGCTGTGAAACAAAGTTGCTCTTGAGAGGCTGGTTTGAGCTTTACTTCTCCTTCTACATGGGCAGCA  
AGACCTGCGAGGCGAGGAACACATCCTCTGAATACAAATACTAAGTCTAGAGAGAAGACTCTGGGTT  
ATACTGGTGGAGGCTGCCACAGAGGATGGAATGTCTTAAGCGCAGCCCTGAGTTGGAGCTTCAAGTG  
CTTGGCCTCCAGTTACCAACTCTGTCTGGTTTCATGTCTTTTCTATCTGGCAGTGGGAATAATGTTTT  
TAGTGAACACTGTTCTCTGGGTGACAATACGTAAGAAGTGAAGAAAGAAAAGTGGGATTTAGAAAT  
CTCTTTGGATTCTGGTATGAGAAGAAGTAATTTCCAGCCTTCAAGAAGACAGACATTTAGAAGAAGAG  
CTGAAATGTCAGGAACAAAAGAAGAACAGCTGCAGGAAGGGGTGCACCGGAAGGAGCCCGAGGGGCCA  
CG

**ACGCGT**ACGCGGCCGCTCGAGCAGAACTCATCTCAGAAGAGGATCTGGCAGCAATGATATCCTGGATT  
ACAAGGATGACGACGATAAGGTTTAA



[View online >](#)

**Protein Sequence:** >RC207487 protein sequence  
Red=Cloning site Green=Tags(s)

MWFLTLLLLWVPVDGQVDTTKAVITLQPPWVSVFQEETVTLHCEVLHLPSSSTQWFLNGTATQTSTPSY  
 RITSASVNDSGEYRCQRGLSGRSDPIQLEIHRGWLLLQVSSRVFTEGEPLALRCHAWKDKLVYNVLYRN  
 GKAFKFFHWNSNLTILKTNISHNGTYHCSGMGKHRYTSAGISVTVKELFPAPVLNASVTSPLLEGNLVTL  
 SCETKLLLQRPGLQLYFSFYMGSKTLRGRNTSSEYQILTARREDSGLYWCEAATEDGNVLKRSEPELELQV  
 LGLQLPTPVWFHVLFYLAVGIMFLVNTVLTWVWVIRKELKRKKKWDLEISLDSGHEKKVISSLQEDRHLEEE  
 LKCEQKEEQLEQEGVHRKEPQGAT

TRTRPLEQKLISEEDLAANDILDYKDDDDKV

**Chromatograms:** [https://cdn.origene.com/chromatograms/mk6136\\_a04.zip](https://cdn.origene.com/chromatograms/mk6136_a04.zip)

**Restriction Sites:** SgfI-MluI

**Cloning Scheme:**



\* The last codon before the Stop codon of the ORF

**ACCN:** NM\_000566

**ORF Size:** 1122 bp

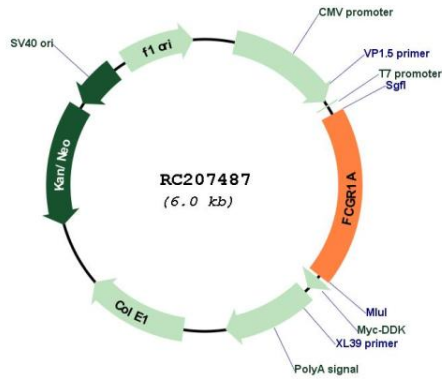
**OTI Disclaimer:** The molecular sequence of this clone aligns with the gene accession number as a point of reference only. However, individual transcript sequences of the same gene can differ through naturally occurring variations (e.g. polymorphisms), each with its own valid existence. This clone is substantially in agreement with the reference, but a complete review of all prevailing variants is recommended prior to use. [More info](#)

**OTI Annotation:** This clone was engineered to express the complete ORF with an expression tag. Expression varies depending on the nature of the gene.

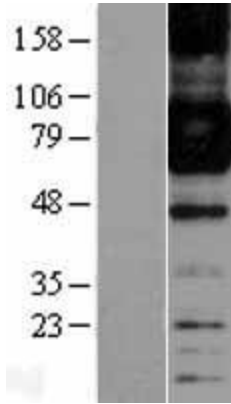
**Components:** The ORF clone is ion-exchange column purified and shipped in a 2D barcoded Matrix tube containing 10ug of transfection-ready, dried plasmid DNA (reconstitute with 100 ul of water).

<b>Reconstitution Method:</b>	<ol style="list-style-type: none"><li>1. Centrifuge at 5,000xg for 5min.</li><li>2. Carefully open the tube and add 100ul of sterile water to dissolve the DNA.</li><li>3. Close the tube and incubate for 10 minutes at room temperature.</li><li>4. Briefly vortex the tube and then do a quick spin (less than 5000xg) to concentrate the liquid at the bottom.</li><li>5. Store the suspended plasmid at -20°C. The DNA is stable for at least one year from date of shipping when stored at -20°C.</li></ol>
<b>Note:</b>	Plasmids are not sterile. For experiments where strict sterility is required, filtration with 0.22um filter is required.
<b>RefSeq:</b>	<a href="#">NM_000566.2</a> , <a href="#">NP_000557.1</a>
<b>RefSeq Size:</b>	2268 bp
<b>RefSeq ORF:</b>	1125 bp
<b>Locus ID:</b>	2209
<b>UniProt ID:</b>	<a href="#">P12314</a>
<b>Cytogenetics:</b>	1q21.2
<b>Domains:</b>	ig, IGc2, IG
<b>Protein Families:</b>	Transmembrane
<b>Protein Pathways:</b>	Fc gamma R-mediated phagocytosis, Hematopoietic cell lineage, Systemic lupus erythematosus
<b>MW:</b>	42.6 kDa
<b>Gene Summary:</b>	This gene encodes a protein that plays an important role in the immune response. This protein is a high-affinity Fc-gamma receptor. The gene is one of three related gene family members located on chromosome 1. [provided by RefSeq, Jul 2008]

Product images:



Circular map for RC207487



Western blot validation of overexpression lysate (Cat# [LY400193]) using anti-DDK antibody (Cat# [TA50011-100]). Left: Cell lysates from untransfected HEK293T cells; Right: Cell lysates from HEK293T cells transfected with RC207487 using transfection reagent MegaTran 2.0 (Cat# [TT210002]).