

## Product datasheet for RC207486L1

### Activin Receptor Type IA (ACVR1) (NM\_001105) Human Tagged Lenti ORF Clone

#### Product data:

Product Type:	Expression Plasmids
Product Name:	Activin Receptor Type IA (ACVR1) (NM_001105) Human Tagged Lenti ORF Clone
Tag:	Myc-DDK
Symbol:	Activin Receptor Type IA
Synonyms:	ACTRI; ACVR1A; ACVRLK2; ALK2; FOP; SKR1; TSRI
Mammalian Cell Selection:	None
Vector:	pLenti-C-Myc-DDK (PS100064)
E. coli Selection:	Chloramphenicol (34 ug/mL)
ORF Nucleotide Sequence:	The ORF insert of this clone is exactly the same as(RC207486).
Restriction Sites:	SgfI-MluI
Cloning Scheme:	

Cloning sites used for ORF Shuttling:



\* The last codon before the Stop codon of the ORF.

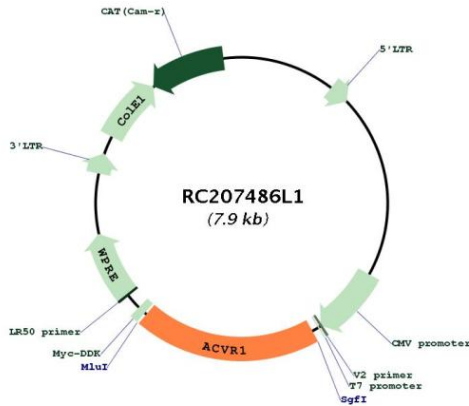
ACCN:	NM_001105
ORF Size:	1527 bp



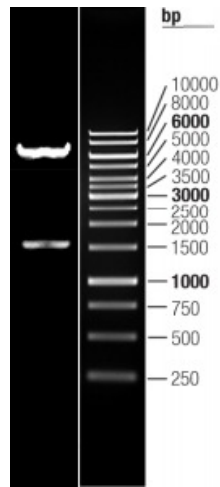
[View online »](#)

<b>OTI Disclaimer:</b>	The molecular sequence of this clone aligns with the gene accession number as a point of reference only. However, individual transcript sequences of the same gene can differ through naturally occurring variations (e.g. polymorphisms), each with its own valid existence. This clone is substantially in agreement with the reference, but a complete review of all prevailing variants is recommended prior to use. <a href="#">More info</a>
<b>OTI Annotation:</b>	This clone was engineered to express the complete ORF with an expression tag. Expression varies depending on the nature of the gene.
<b>Components:</b>	The ORF clone is ion-exchange column purified and shipped in a 2D barcoded Matrix tube containing 10ug of transfection-ready, dried plasmid DNA (reconstitute with 100 ul of water).
<b>Reconstitution Method:</b>	<ol style="list-style-type: none"><li>1. Centrifuge at 5,000xg for 5min.</li><li>2. Carefully open the tube and add 100ul of sterile water to dissolve the DNA.</li><li>3. Close the tube and incubate for 10 minutes at room temperature.</li><li>4. Briefly vortex the tube and then do a quick spin (less than 5000xg) to concentrate the liquid at the bottom.</li><li>5. Store the suspended plasmid at -20°C. The DNA is stable for at least one year from date of shipping when stored at -20°C.</li></ol>
<b>RefSeq:</b>	<a href="#">NM_001105.2</a> , <a href="#">NP_001096.1</a>
<b>RefSeq Size:</b>	2952 bp
<b>RefSeq ORF:</b>	1530 bp
<b>Locus ID:</b>	90
<b>UniProt ID:</b>	<a href="#">Q04771</a>
<b>Cytogenetics:</b>	2q24.1
<b>Domains:</b>	Activin_recp, pkinase, TyrKc, S_TKc, GS
<b>Protein Families:</b>	Druggable Genome, ES Cell Differentiation/IPS, Protein Kinase, Transmembrane
<b>Protein Pathways:</b>	Cytokine-cytokine receptor interaction, TGF-beta signaling pathway
<b>MW:</b>	57.15 kDa
<b>Gene Summary:</b>	Activins are dimeric growth and differentiation factors which belong to the transforming growth factor-beta (TGF-beta) superfamily of structurally related signaling proteins. Activins signal through a heteromeric complex of receptor serine kinases which include at least two type I (I and IB) and two type II (II and IIB) receptors. These receptors are all transmembrane proteins, composed of a ligand-binding extracellular domain with cysteine-rich region, a transmembrane domain, and a cytoplasmic domain with predicted serine/threonine specificity. Type I receptors are essential for signaling; and type II receptors are required for binding ligands and for expression of type I receptors. Type I and II receptors form a stable complex after ligand binding, resulting in phosphorylation of type I receptors by type II receptors. This gene encodes activin A type I receptor which signals a particular transcriptional response in concert with activin type II receptors. Mutations in this gene are associated with fibrodysplasia ossificans progressive. [provided by RefSeq, Jul 2008]

Product images:



Circular map for RC207486L1



Double digestion of RC207486L1 using SgfI and MluI