

Product datasheet for RC207485

Scramblase 1 (PLSCR1) (NM_021105) Human Tagged ORF Clone

Product data:

Product Type:	Expression Plasmids
Product Name:	Scramblase 1 (PLSCR1) (NM_021105) Human Tagged ORF Clone
Tag:	Myc-DDK
Symbol:	Scramblase 1
Synonyms:	MMTRA1B
Mammalian Cell Selection:	Neomycin
Vector:	pCMV6-Entry (PS100001)
E. coli Selection:	Kanamycin (25 ug/mL)
ORF Nucleotide Sequence:	>RC207485 ORF sequence Red=Cloning site Blue=ORF Green=Tags(s)

TTTTGTAATACGACTCACTATAGGGCGGCCGGAATTCGTCGACTGGATCCGGTACCGAGGAGATCTGCC
GCC**CGATCGCC**

ATGGACAAACAAAACCTCACAGATGAATGCTTCTCACCCGGAAACAACTTGCCAGTTGGGTATCCTCCTC
AGTATCCACCGACAGCATTCCAAGGACCTCCAGGATATAGTGGCTACCCTGGGCCCCAGGTCAGCTACCC
ACCCCCACCGCCGCCATTCAGGTCCTGGCCAGCTGGCTTTCCTGTCCAAATCAGCCAGTGTATAAT
CAGCCAGTATATAATCAGCCAGTTGGAGCTGCAGGGTACCATGGATGCCAGCGCCACAGCCTCCATTAA
ACTGTCCACCTGGATTAGAATATTTAAGTCAGATAGATCAGATACTGATTCATCAGCAAATGAACCTTCT
GGAAGTTTTAACAGGTTTTGAACTAATAACAAATATGAAATTAAGAACAGCTTTGGACAGAGGGTTTAC
TTTGCAGCGGAAGATACTGATTGCTGTACCCGAAATTGCTGTGGGCCATCTAGACCTTTTACCTTGAGGA
TTATTGATAATATGGGTCAAGAAGTCATAACTCTGGAGAGACCACTAAGATGTAGCAGCTGTTGTTGTCC
CTGCTGCCTTCAGGAGATAGAAATCCAAGCTCCTCCTGGTGTACCAATAGGTTATGTTATTCAGACTTG
CACCCATGTCTACCAAAGTTTACAATTCAAAATGAGAAAAGAGAGGATGTACTAAAAATAAGTGGTCCAT
GTGTTGTGTGCAGCTGTTGTGGAGATGTTGATTTTGTGATTAATCTCTTGATGAACAGTGTGTGGTTGG
CAAAATTTCCAAGCACTGGACTGGAATTTTGTGAGAGAGGCATTTACAGACGCTGATAACTTTGGAATCCAG
TTCCCTTTAGACCTTGATGTTAAAATGAAAGCTGTAATGATTGGTGCCTGTTTCCCTATTGACTTCATGT
TTTTTGAAGCACTGGCAGCCAGGAACAAAATCAGGAGTGTGG

ACGCGTACGCGGCCGCTCGAGCAGAACTCATCTCAGAAGAGGATCTGGCAGCAAATGATATCCTGGATT
ACAAGGATGACGACGATAAGGTTTAA



[View online »](#)

Protein Sequence: >RC207485 protein sequence
 Red=Cloning site Green=Tags(s)

MDKQNSQMNASHPETNLPVGYPPQYPPTAFQGGPGYSGYPGPQVSYPPPPAGHSGPGPAGFPVNPQPVYN
 QPVYNQPVGAAGVPWMPAPQPPLNCPGLEYLSDIQILIHQQIELLEVLTFETNNKYEIKNSFGQRVY
 FAAEDTDCCTRNC CGPSRPFTLRIDNMGEVITLERPLRCSCCCPCCLQEIEIQAPPGVPIGYVIQTW
 HPCLPKFTIQNEKREDVLKISGPCVVCCSGGDVDFEIKSLDEQCVVGKISKHWTGILREAFDADNFGIQ
 FPLDLDVKMKAVMIGACFLIDFMFFESTGSQE QKSGVW

TRTRPLEQKLISEEDLAANDILDYKDDDDKVV

Chromatograms: https://cdn.origene.com/chromatograms/mk6021_b04.zip

Restriction Sites: SgfI-MluI

Cloning Scheme:

Cloning sites used for ORF Shuttling:



* The last codon before the Stop codon of the ORF

ACCN: NM_021105

ORF Size: 954 bp

OTI Disclaimer: The molecular sequence of this clone aligns with the gene accession number as a point of reference only. However, individual transcript sequences of the same gene can differ through naturally occurring variations (e.g. polymorphisms), each with its own valid existence. This clone is substantially in agreement with the reference, but a complete review of all prevailing variants is recommended prior to use. [More info](#)

OTI Annotation: This clone was engineered to express the complete ORF with an expression tag. Expression varies depending on the nature of the gene.

Components: The ORF clone is ion-exchange column purified and shipped in a 2D barcoded Matrix tube containing 10ug of transfection-ready, dried plasmid DNA (reconstitute with 100 ul of water).

Reconstitution Method:

1. Centrifuge at 5,000xg for 5min.
2. Carefully open the tube and add 100ul of sterile water to dissolve the DNA.
3. Close the tube and incubate for 10 minutes at room temperature.
4. Briefly vortex the tube and then do a quick spin (less than 5000xg) to concentrate the liquid at the bottom.
5. Store the suspended plasmid at -20°C. The DNA is stable for at least one year from date of shipping when stored at -20°C.

RefSeq: [NM_021105.3](#)

RefSeq Size: 2228 bp

RefSeq ORF: 957 bp

Locus ID: 5359

UniProt ID: [O15162](#)

Cytogenetics: 3q24

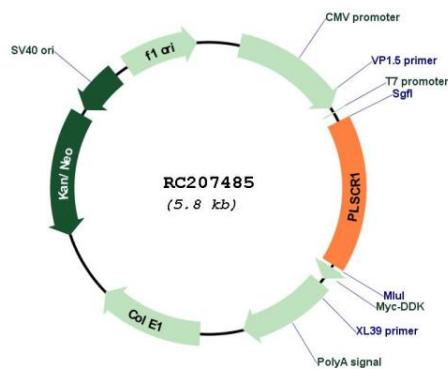
Domains: Scramblase

Protein Families: Druggable Genome, Stem cell - Pluripotency

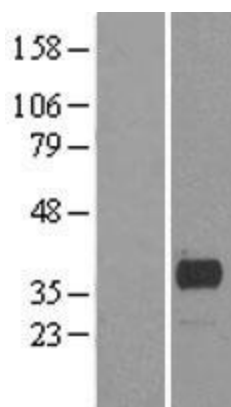
MW: 35 kDa

Gene Summary: May mediate accelerated ATP-independent bidirectional transbilayer migration of phospholipids upon binding calcium ions that results in a loss of phospholipid asymmetry in the plasma membrane. May play a central role in the initiation of fibrin clot formation, in the activation of mast cells and in the recognition of apoptotic and injured cells by the reticuloendothelial system.[UniProtKB/Swiss-Prot Function]

Product images:



Circular map for RC207485



Western blot validation of overexpression lysate (Cat# [LY402834]) using anti-DDK antibody (Cat# [TA50011-100]). Left: Cell lysates from untransfected HEK293T cells; Right: Cell lysates from HEK293T cells transfected with RC207485 using transfection reagent MegaTran 2.0 (Cat# [TT210002]).