

Product datasheet for RC207483

TRAPPC1 (NM_021210) Human Tagged ORF Clone

Product data:

Product Type: Expression Plasmids
Product Name: TRAPPC1 (NM_021210) Human Tagged ORF Clone
Tag: Myc-DDK
Symbol: TRAPPC1
Synonyms: BET5; MUM2
Mammalian Cell Selection: Neomycin
Vector: pCMV6-Entry (PS100001)
E. coli Selection: Kanamycin (25 ug/mL)
ORF Nucleotide Sequence: >RC207483 ORF sequence
 Red=Cloning site Blue=ORF Green=Tags(s)

TTTTGTAATACGACTCACTATAGGGCGGCCGGAATTCGTCGACTGGATCCGGTACCGAGGAGATCTGCC
 GCC**CGATCGCC**

ATGACTGTCCACAACCTGTACCTGTTTGACCGAATGGAGTGTGTCTGCACTACAGCGAATGGCACC
 AGAAGCAAGCAGGGATCCCAAGGAGGAGGAGTATAAGCTGATGTACGGGATGCTCTTCTATCCGCTC
 GTTTGTCAGCAAGATGTCCCGCTAGACATGAAGGATGGCTTCTGGCCTTCCAACTAGCCGTTACAA
 CTCCATTACTACGAGACGCCACTGGGATCAAAGTTGTCATGAATACTGACTTGGGCGTGGGACCCATCC
 GAGATGTGCTGCACCACATCTACAGTGCCTGTATGTGGAGCTGGTGGTGAAGAATCCCTGTGCCCGCT
 GGGCCAACTGTGCAAAGTGAGCTCTTTCGCTCCCGACTGGACTCCTATGTTTCGCTCTGCCCCTCTTC
 TCCGCCCGGGCTGGC

ACGCGTACGCGGCCGCTCGAGCAGAACTCATCTCAGAAGAGGATCTGGCAGCAAATGATATCCTGGATT
 ACAAGGATGACGACGATAAGGTTTAA

Protein Sequence: >RC207483 protein sequence
 Red=Cloning site Green=Tags(s)
 MTVHNLVLFDRNGVCLHYSEWHRKKQAGIPKEEYKLMYGMLFSIRSFVSKMSPLDMKDGFLAFQTSRYK
 LHYYETPTGIKVMNTDLGVPIRDVLHHIYSALYVELVVKNPCLPLGQTVQSELFRSRLDSYVRSPLPF
 SARAG

TRTRPLEQKLISEEDLAANDILDYKDDDDKV

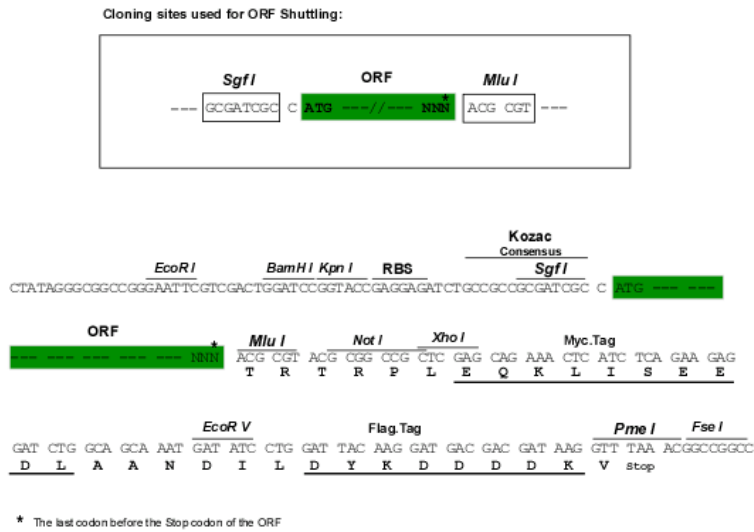
Chromatograms: https://cdn.origene.com/chromatograms/mk6336_a04.zip



[View online >](#)

Restriction Sites: SgfI-MluI

Cloning Scheme:



ACCN: NM_021210

ORF Size: 435 bp

OTI Disclaimer: The molecular sequence of this clone aligns with the gene accession number as a point of reference only. However, individual transcript sequences of the same gene can differ through naturally occurring variations (e.g. polymorphisms), each with its own valid existence. This clone is substantially in agreement with the reference, but a complete review of all prevailing variants is recommended prior to use. [More info](#)

OTI Annotation: This clone was engineered to express the complete ORF with an expression tag. Expression varies depending on the nature of the gene.

Components: The ORF clone is ion-exchange column purified and shipped in a 2D barcoded Matrix tube containing 10ug of transfection-ready, dried plasmid DNA (reconstitute with 100 ul of water).

Reconstitution Method:

1. Centrifuge at 5,000xg for 5min.
2. Carefully open the tube and add 100ul of sterile water to dissolve the DNA.
3. Close the tube and incubate for 10 minutes at room temperature.
4. Briefly vortex the tube and then do a quick spin (less than 5000xg) to concentrate the liquid at the bottom.
5. Store the suspended plasmid at -20°C. The DNA is stable for at least one year from date of shipping when stored at -20°C.

RefSeq: [NM_021210.5](#)

RefSeq Size: 837 bp

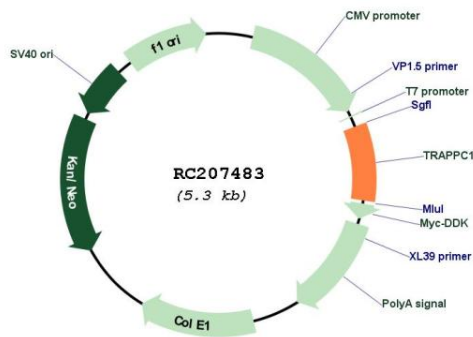
RefSeq ORF: 438 bp

Locus ID: 58485

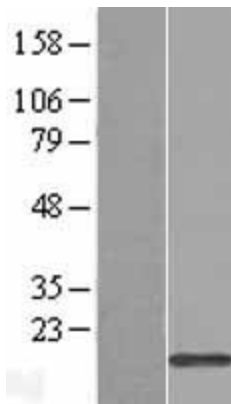
UniProt ID: [Q9Y5R8](#)
Cytogenetics: 17p13.1
Domains: Sybindin
MW: 16.8 kDa

Gene Summary: This gene product plays a role in vesicular transport of proteins to the Golgi apparatus from the endoplasmic reticulum. The encoded protein is a component of the multisubunit transport protein particle (TRAPP) complex. Alternative splicing results in multiple transcript variants.[provided by RefSeq, Oct 2009]

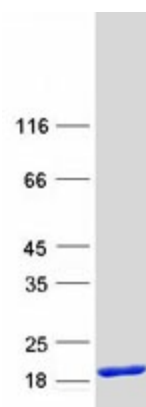
Product images:



Circular map for RC207483



Western blot validation of overexpression lysate (Cat# [LY412013]) using anti-DDK antibody (Cat# [TA50011-100]). Left: Cell lysates from untransfected HEK293T cells; Right: Cell lysates from HEK293T cells transfected with RC207483 using transfection reagent MegaTran 2.0 (Cat# [TT210002]).



Coomassie blue staining of purified TRAPPC1 protein (Cat# [TP307483]). The protein was produced from HEK293T cells transfected with TRAPPC1 cDNA clone (Cat# RC207483) using MegaTran 2.0 (Cat# [TT210002]).