

Product datasheet for **RC207477**

GOLPH3 (NM_022130) Human Tagged ORF Clone

Product data:

Product Type:	Expression Plasmids
Product Name:	GOLPH3 (NM_022130) Human Tagged ORF Clone
Tag:	Myc-DDK
Symbol:	GOLPH3
Synonyms:	GOPP1; GPP34; MIDAS; Vps74
Mammalian Cell Selection:	Neomycin
Vector:	pCMV6-Entry (PS100001)
E. coli Selection:	Kanamycin (25 ug/mL)
ORF Nucleotide Sequence:	>RC207477 ORF sequence Red=Cloning site Blue=ORF Green=Tags(s)

TTTTGTAATACGACTCACTATAGGGCGGCCGGAATTCGTCGACTGGATCCGGTACCGAGGAGATCTGCC
GCC**CGGATCGCC**

ATGACCTCGTGACCCAGCGCAGCTCCGGCCTGGTGCAGCGGCGCACCGAGGCCTCCCGAACGCCCGG
ACAAGGAGCGGGCGGGCGGGCGGGCGCCGCGCAGCAGCGAGGACGACGCGCAGAGCCGCCGCGACGAGCA
GGACGACGACGACAAGGGCGACTCCAAGGAAACCGGGCTGACCCTGATGGAGGAAGTGCTCCTGCTGGC
CTCAAGGACCGCGAGGGTTACACATCATTTTGAATGACTGTATATCATCTGGATTACGTGGCTGTATGT
TAATTGAATTAGCATTGAGAGGAAGTTACAACACTAGAGGCTTGTGAATGAGACGTAAGTCTATTAAC
AAGAAAGGTAATCTGTAAGTCAGATGCTCCAACAGGGGATGTTCTTCTTGATGAAGCTCTGAAGCATGTT
AAGGAACTCAGCCTCCAGAAACGGTCCAGAACTGGATTGAATTACTTAGTGGTGAACATGGAATCCAT
TAAATTGCATTATCAGTTAAGAAATGTACGGGAACGATTAGCTAAAAACCTGGTGGAAAAGGGTGTATT
GACAACAGAGAAACAGAACTTCTACTTTTTGACATGACAACACATCCCCCACCACAAACAACATTAAG
CAGCGCTCATCAAGAAAGTACAGGAAGCCGTTCTTGACAAATGGGTGAATGACCCTCACCGCATGGACA
GGCGCTTGCTGGCCCTCATTTACCTGGCTCATGCCTCGGACGCTCTGGAGAATGCTTTTGCTCCTCTTCT
GGACGAGCAGTATGATTTGGCTACCAAGAGAGTGCAGCTTCTCGACTTAGACCCTGAAGTGAATGT
CTGAAGGCCAACCAATGAGTTCTGTGGCGGTGGTGGCGGCTTACCAAG

ACGCGTACGCGGGCGCTCGAGCAGAAACTCATCTCAGAAGAGGATCTGGCAGCAAATGATATCCTGGATT
ACAAGGATGACGACGATAAGGTTAA



[View online »](#)

Protein Sequence: >RC207477 protein sequence
Red=Cloning site Green=Tags(s)

MTSLTQRSSGLVQRRTEASRNAADKERAAGGGAGSSEDDAQSRRDEQDDDDKGDSEKTRLTLMEEVLLLG
 LKDREGYTSFVNDCISSGLRGCMLIELALRGLQLEACGMRRKSLLTRKVICSDAPTGDVLLDEALKHV
 KETQPPETVQNWIELLSGETWNPCLKLHYQLRNVRELRKLNLEKGVLTTEKQNFLLFDMTTHPLTNNNIK
 QRLIKKVQEAVLDKWVNDPHRMDRRLAL IYLAHASDVLENAPLLDEQYDLATKRVRQLLDLDPVEVC
 LKANTNEVLWAVVAFTK

TRTRPLEQKLISEEDLAANDILDYKDDDDKV

Chromatograms: https://cdn.origene.com/chromatograms/mk6769_g10.zip

Restriction Sites: SgfI-MluI

Cloning Scheme:



ACCN: NM_022130

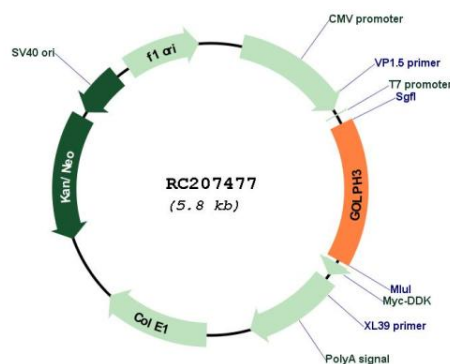
ORF Size: 894 bp

OTI Disclaimer: Due to the inherent nature of this plasmid, standard methods to replicate additional amounts of DNA in E. coli are highly likely to result in mutations and/or rearrangements. Therefore, OriGene does not guarantee the capability to replicate this plasmid DNA. Additional amounts of DNA can be purchased from OriGene with batch-specific, full-sequence verification at a reduced cost. Please contact our customer care team at custsupport@origene.com or by calling 301.340.3188 option 3 for pricing and delivery.

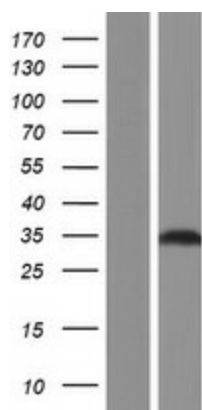
The molecular sequence of this clone aligns with the gene accession number as a point of reference only. However, individual transcript sequences of the same gene can differ through naturally occurring variations (e.g. polymorphisms), each with its own valid existence. This clone is substantially in agreement with the reference, but a complete review of all prevailing variants is recommended prior to use. [More info](#)

OTI Annotation:	This clone was engineered to express the complete ORF with an expression tag. Expression varies depending on the nature of the gene.
Components:	The ORF clone is ion-exchange column purified and shipped in a 2D barcoded Matrix tube containing 10ug of transfection-ready, dried plasmid DNA (reconstitute with 100 ul of water).
Reconstitution Method:	<ol style="list-style-type: none">1. Centrifuge at 5,000xg for 5min.2. Carefully open the tube and add 100ul of sterile water to dissolve the DNA.3. Close the tube and incubate for 10 minutes at room temperature.4. Briefly vortex the tube and then do a quick spin (less than 5000xg) to concentrate the liquid at the bottom.5. Store the suspended plasmid at -20°C. The DNA is stable for at least one year from date of shipping when stored at -20°C.
RefSeq:	NM_022130.4
RefSeq Size:	2676 bp
RefSeq ORF:	897 bp
Locus ID:	64083
UniProt ID:	Q9H4A6
Cytogenetics:	5p13.3
MW:	33.8 kDa
Gene Summary:	The Golgi complex plays a key role in the sorting and modification of proteins exported from the endoplasmic reticulum. The protein encoded by this gene is a peripheral membrane protein of the Golgi stack and may have a regulatory role in Golgi trafficking. Several alternatively spliced transcript variants of this gene have been described, but the full-length nature of these variants has not been determined. [provided by RefSeq, Jul 2008]

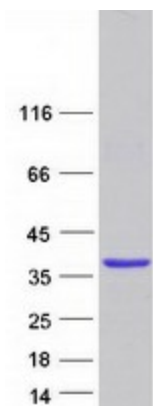
Product images:



Circular map for RC207477



Western blot validation of overexpression lysate (Cat# [LY411758]) using anti-DDK antibody (Cat# [TA50011-100]). Left: Cell lysates from untransfected HEK293T cells; Right: Cell lysates from HEK293T cells transfected with RC207477 using transfection reagent MegaTran 2.0 (Cat# [TT210002]).



Coomassie blue staining of purified GOLPH3 protein (Cat# [TP307477]). The protein was produced from HEK293T cells transfected with GOLPH3 cDNA clone (Cat# RC207477) using MegaTran 2.0 (Cat# [TT210002]).