

Product datasheet for **RC207476**

SNX16 (NM_152836) Human Tagged ORF Clone

Product data:

Product Type:	Expression Plasmids
Product Name:	SNX16 (NM_152836) Human Tagged ORF Clone
Tag:	Myc-DDK
Symbol:	SNX16
Mammalian Cell Selection:	Neomycin
Vector:	pCMV6-Entry (PS100001)
E. coli Selection:	Kanamycin (25 ug/mL)
ORF Nucleotide Sequence:	>RC207476 ORF sequence Red=Cloning site Blue=ORF Green=Tags(s)

TTTTGTAATACGACTCACTATAGGGCGGCCGGAATTCGTCGACTGGATCCGGTACCGAGGAGATCTGCC
GCC**CGATCGCC**

ATGGCAACTCCTTATGTCCCAGTTCCTATGCCCATAGGAACTCTGCTTCCAGTTTTACAACAACAGAA
ATCAAAGAAGTTCTTCTTTGGCAGTGTCTCAACAAGCTCAAATCTTCTAAGGGCCAGTTAGAAGACTC
AAATATGGGTAATTTTAAACAGACAAGTGTTCCTGATCAAATGGATAATACTTCATCTGTCTGTAGCAGT
CCCCTCATTAGGACTAAATTTACAGGTACAGTTCCTCCATTGAGTATTCTACTAGACCAAGAGACTG
AAGAACAAAATCCGGAACAGTGAATTGGGAAGATAGACCATCTACACCTACTATACTGGGTTATGAAGT
GATGGAAGAAAGAGCTAAATTTACTGTATATAAAATACTAGTAAAGAAAACCCAGAAAGAAAGCTGGGTA
GTTTTCAGAAGATACACTGACTTCTCTAGGCTTAATGACAAATTAAGAGATGTTTCCAGTTCGAC
TAGCACTTCTCCAAAACGCTGGTTAAAGATAATTACAATGCTGACTTTTTAGAAGACAGACAATTAGG
ATTACAAGCGTTTCTTAAAATTTAGTAGCTCACAAGGACATTGCTAACTGCCTTGCACTGAGAGAATTT
CTTTGTTGGATGATCCACCGGTCCATTTGATAGCCTAGAAGAAAGCAGGGCATTCTGTGAACTTTAG
AAGAGACAACTACCGCTTACAGAAAGAACTACTTAAAAACAAAAGGAGATGGAATCACTAAAGAACT
GCTCAGTGAGAAGCAACTTCATATAGACACTTTAGAGAACAGAATCAGAACATTGCTTTAGAACCTGAA
GAATCACTGGATGTGTCAGAAACAGAAGGTGAACAGATCCTAAAGTGGAGTCTCTGCCTTGAGGTTG
ATCAAGATGTCCTGGATGAAGAATCTAGAGCTGATAATAAACCATGCTTAAGTTTTAGTGAACCTGAAAA
TGCTGTATCAGAGATAGAAGTAGCAGAAGTGGCATATGATGCTGAAGAAGAC

ACGCGTACGCGGCCGCTCGAGCAGAACTCATCTCAGAAGAGGATCTGGCAGCAAATGATATCCTGGATT
ACAAGGATGACGACGATAAGGTTTAA



[View online »](#)

Protein Sequence: >RC207476 protein sequence
Red=Cloning site Green=Tags(s)

MATPYVPVMPPIGNSASSFTTNRNQRSSSFGSVSTSSNSSKGQLEDSNMGNFKQTSVPDQMDNTSSVCS
 PLIRTKFTGTASSIEYSTRPRDTEEQNPETVNWEDRPSTPTILGYEVMEERAKFTVYKILVKKTPEESWV
 VFRRYTDF SRLNDKLEMFPGFRLALPPKRWFKDNYNADFLEDROLGLQAFQLNLVAHKDIANCLAVREF
 LCLDDPPGPFDSLEESRAFCETLEETNYRLQKELLEKQKEMESLKKLLSEKQLHIDTLENRIRTLSEPE
 ESLDVSETEGEQILKVESSALEVDQDVLDEESRADNKPCLSFSEPENAVSEIEVAEVAAYDAEED

TRTRPLEQKLISEEDLAANDILDYKDDDDKV

Chromatograms: https://cdn.origene.com/chromatograms/mk6019_c09.zip

Restriction Sites: SgfI-MluI

Cloning Scheme:

Cloning sites used for ORF Shuttling:



* The last codon before the Stop codon of the ORF

ACCN: NM_152836

ORF Size: 1032 bp

OTI Disclaimer: The molecular sequence of this clone aligns with the gene accession number as a point of reference only. However, individual transcript sequences of the same gene can differ through naturally occurring variations (e.g. polymorphisms), each with its own valid existence. This clone is substantially in agreement with the reference, but a complete review of all prevailing variants is recommended prior to use. [More info](#)

OTI Annotation: This clone was engineered to express the complete ORF with an expression tag. Expression varies depending on the nature of the gene.

Components: The ORF clone is ion-exchange column purified and shipped in a 2D barcoded Matrix tube containing 10ug of transfection-ready, dried plasmid DNA (reconstitute with 100 ul of water).

Reconstitution Method:

1. Centrifuge at 5,000xg for 5min.
2. Carefully open the tube and add 100ul of sterile water to dissolve the DNA.
3. Close the tube and incubate for 10 minutes at room temperature.
4. Briefly vortex the tube and then do a quick spin (less than 5000xg) to concentrate the liquid at the bottom.
5. Store the suspended plasmid at -20°C. The DNA is stable for at least one year from date of shipping when stored at -20°C.

RefSeq: [NM_152836.3](#)

RefSeq Size: 3225 bp

RefSeq ORF: 1035 bp

Locus ID: 64089

UniProt ID: [P57768](#)

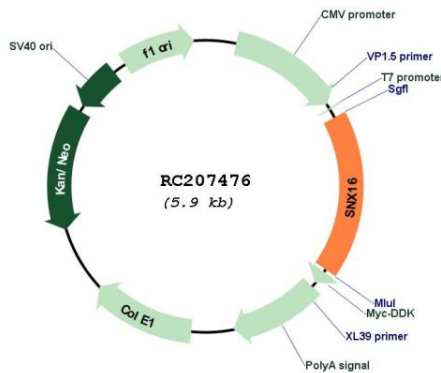
Cytogenetics: 8q21.13

Domains: PX

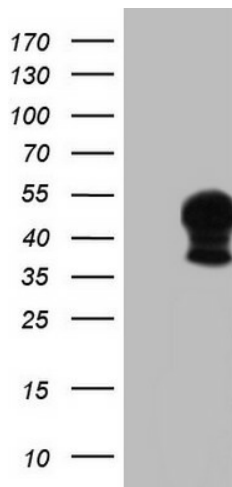
MW: 39.2 kDa

Gene Summary: This gene encodes a member of the sorting nexin family. Members of this family contain a phox (PX) domain, which is a phosphoinositide binding domain, and are involved in intracellular trafficking. The protein encoded by this gene associates with late endosome membranes as is involved in tubule formation, cholesterol transport, and transport of tetraspanin CD81. The encoded protein also inhibits cell migration and tumorigenesis. [provided by RefSeq, Jan 2017]

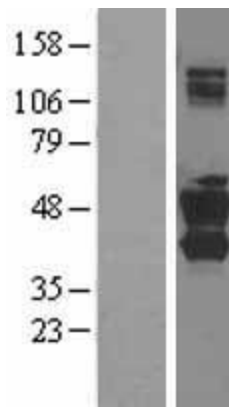
Product images:



Circular map for RC207476



HEK293T cells were transfected with the pCMV6-ENTRY control (Cat# [PS100001], Left lane) or pCMV6-ENTRY SNX16 (Cat# RC207476, Right lane) cDNA for 48 hrs and lysed. Equivalent amounts of cell lysates (5 ug per lane) were separated by SDS-PAGE and immunoblotted with anti-SNX16 antibody (Cat# [TA890009]). Positive lysates [LY403494] (100ug) and [LC403494] (20ug) can be purchased separately from OriGene.



Western blot validation of overexpression lysate (Cat# [LY403494]) using anti-DDK antibody (Cat# [TA50011-100]). Left: Cell lysates from untransfected HEK293T cells; Right: Cell lysates from HEK293T cells transfected with RC207476 using transfection reagent MegaTran 2.0 (Cat# [TT210002]).



Coomassie blue staining of purified SNX16 protein (Cat# [TP307476]). The protein was produced from HEK293T cells transfected with SNX16 cDNA clone (Cat# RC207476) using MegaTran 2.0 (Cat# [TT210002]).