

## Product datasheet for **RC207469**

### CCDC82 (NM\_024725) Human Tagged ORF Clone

#### Product data:

Product Type:	Expression Plasmids
Product Name:	CCDC82 (NM_024725) Human Tagged ORF Clone
Tag:	Myc-DDK
Symbol:	CCDC82
Synonyms:	HSPC048
Mammalian Cell Selection:	Neomycin
Vector:	pCMV6-Entry (PS100001)
E. coli Selection:	Kanamycin (25 ug/mL)



[View online »](#)

**ORF Nucleotide Sequence:**

>RC207469 ORF sequence  
 Red=Cloning site Blue=ORF Green=Tags(s)

TTTTGTAATACGACTCACTATAGGGCGGCCGGAATTCGTCGACTGGATCCGGTACCGAGGAGATCTGCC  
 GCC**CGCATCGCC**

ATGATACATGTTAGAAGACATGAAACAAGGAGAAATTCTAAGAGTCACGTGCCTGAGCAGAAATCTCGAG  
 TTGATTGGAGCGAACTAAAAGAAGTAGTATCTCACAACTACTTGATAGTGATGAAGAGCTTGATAGTGA  
 AGAATTTGATAGTGATGAAGAGCTTGATAGTGATGAAAGTTTTGAAAATGATGAAGAGCTTGATAGTAA  
 AAGGGACCTGATTGTAATAAACACCAGGAAGTAAAGAGAGCTCAACTTAAGTAAAATTCAAAGTGAAG  
 GAAATGACAGTAAGTGTCTCATTAACTCTGGCAACGGTTCAACATATGAAGAAGAAACGAACAAAATCAA  
 ACATAGGAATATTGACTTACAAGATCAGGAAAAACATTTAAGTCAAGAGGATAATGATCTCAACAAACAA  
 ACTGGACAATAATAGAGGATGATCAGGAAAAACATTTAAGTCAAGAGGATAATGATCTCAACAAACAA  
 CTGGACAATAATAGAGGATGATTTAGAAGAAGAAGACATCAAGCGAGGAAAAAGAAAAGGCTATCCTC  
 TGTGATGTGTGACAGTGATGAGAGTGATGACAGCGATATCCTAGTTAGAAAAGTAGGTGTTAAACGTCCC  
 CGTAGAGTGGTTGAAGATGAAGGTTCTTCAAGTGGAAATGGAGCAAAAGACTCCTGAAAAACATTAGCTG  
 CACAAAAGCGAGAAAACTTCAGAAGCTCAAAGAACTCTCAAAACAAAGATCTCGTCAGAGAGCGAGTAG  
 TGGTAGAGATTTGAGGACTCTGAAAAGGAATCTTGCCCAAGCAGTGATGAAGTTGATGAGGAGGAAGAA  
 GAGGATAATTAATGAACTGATGAAGATGGAGATGATTATATTATCGATGACTTTGTAGTGAAGATGAGG  
 AGGGTGTGAAGAGAATAAAAACCAACAAGGAGAAAAATTGACTACATCACAACTGAAATTAGTAAAACG  
 GAATTCCTTTATTCTTTTAGTGACCACTATACTCATTGAAAGAGTTGTAAGGCTCTTCTGATCAAC  
 GCTTTAGATGAATCTTTCTGGGAACATTATATGATGGCACAAGGCAAAAATCATATGCAAAAGATATGC  
 TAACTCTCTTCATTATTTGGATAACCGCTTTGTTGAGCCTCGTCTAGAGAGCTTGGTATCTAGAAGTCG  
 TTGGAAGAGCAATATAAGGAGCGAGTAGAAAATTATTCTAATGTAAAGTATTCATTTGAAGAATCCTGAA  
 AACTGTTCTGCCAGGCTTGTTGACTGCATCGCTACTGTAATATTCAAGTGCATTATCAGGAGAGTTGT  
 ATAAACACCAGGACCATGCAATAGATAATTTATGTCACATGATAAACAGGTGTTCACTGTTGGCAGAA  
 TTGTGCCAGCCGTACCAGAAATTTATCAAACTGAAACATTTTAAATTCAACTATACCAGGAATGTTGC  
 ACCATTGCAATGACAGAAGAAGTTGAAGATGAACAAGTTAAAGAAACAGTGGAAGAATTTTCAGGCGGT  
 CAAAAGAAAATGGCTGGATTAAGGAGAAATATGGTCAACTGAAGAATATCTCAATTTTGGCGATTACT  
 TCAAGAAGAGAAGTTTGAGTTG

**ACGCGT**ACGCGGCCGCTCGAGCAGAAACTCATCTCAGAAGAGGATCTGGCAGCAAATGATATCCTGGATT  
 ACAAGGATGACGACGATAAGGTTTAA

**Protein Sequence:**

>RC207469 protein sequence  
 Red=Cloning site Green=Tags(s)

MIHVRRHETRNSKSHVPEQKSRVDWRRTRKRSSISQLLDSDEELDSEEFDSDEELDSDESFENDEELDSN  
 KGPDCNKTPGSERELNLSKIQSEGNSKCLINSGNGSTYEEETNLIKHRNIDLQDQEKHLSQEDNDLNKQ  
 TGQIIEDDQEKHLSQEDNDLNKQTGQIIEDDLEEDIKRGKRKRLSSVMCDSESDSDILVRKVGKRP  
 RRVVEDEGSSVMEQKTPEKTLAAQKREKLQKLKELSKQRSRQRRSSGRDFESEKESCPSSDEVEEEE  
 EDNYESDEEDGDDYIIDDVVQDEEGDEENKNQGEKLTTSQLKLVKRNLSYFSHDHYTHFERVVKALLIN  
 ALDESFLGTLYDGTRQKSYAKDMLTSLHYLDNRFVQPRLESLSRSRWKEQYKERVENYSNVSIHLKNPE  
 NCSCQACGLHRYCKYSVHLSGELYNTRTMQIDNFM SHDKQVFTVGRICASRTRIYHKLKHFKFLYQEC  
 TIAMTEEVEDEQVKETVERIFRRSKENGWIKKEYGQLEEYLNFAFYFQEEKFEL

**TR**TRPLEQKLISEEDLAANDILDYKDDDDKV

**Chromatograms:**

[https://cdn.origene.com/chromatograms/mk6517\\_f08.zip](https://cdn.origene.com/chromatograms/mk6517_f08.zip)

**Restriction Sites:**

SgfI-MluI

**Cloning Scheme:**


**ACCN:** NM\_024725

**ORF Size:** 1632 bp

**OTI Disclaimer:** The molecular sequence of this clone aligns with the gene accession number as a point of reference only. However, individual transcript sequences of the same gene can differ through naturally occurring variations (e.g. polymorphisms), each with its own valid existence. This clone is substantially in agreement with the reference, but a complete review of all prevailing variants is recommended prior to use. [More info](#)

**OTI Annotation:** This clone was engineered to express the complete ORF with an expression tag. Expression varies depending on the nature of the gene.

**Components:** The ORF clone is ion-exchange column purified and shipped in a 2D barcoded Matrix tube containing 10ug of transfection-ready, dried plasmid DNA (reconstitute with 100 ul of water).

- Reconstitution Method:**
1. Centrifuge at 5,000xg for 5min.
  2. Carefully open the tube and add 100ul of sterile water to dissolve the DNA.
  3. Close the tube and incubate for 10 minutes at room temperature.
  4. Briefly vortex the tube and then do a quick spin (less than 5000xg) to concentrate the liquid at the bottom.
  5. Store the suspended plasmid at -20°C. The DNA is stable for at least one year from date of shipping when stored at -20°C.

**RefSeq:** [NM\\_024725.4](#)

**RefSeq Size:** 2746 bp

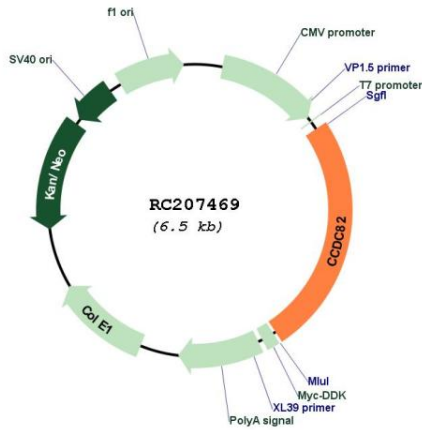
**RefSeq ORF:** 1635 bp

**Locus ID:** 79780

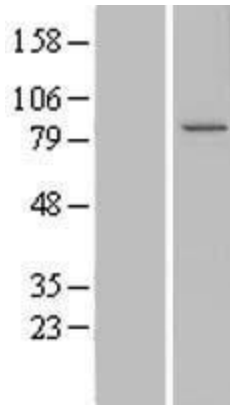
**UniProt ID:** [Q8N4S0](#)

Cytogenetics: 11q21  
 MW: 64 kDa

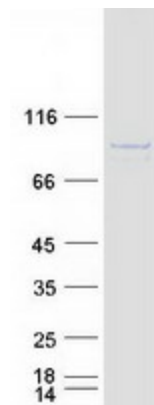
**Product images:**



Circular map for RC207469



Western blot validation of overexpression lysate (Cat# [LY411122]) using anti-DDK antibody (Cat# [TA50011-100]). Left: Cell lysates from untransfected HEK293T cells; Right: Cell lysates from HEK293T cells transfected with RC207469 using transfection reagent MegaTran 2.0 (Cat# [TT210002]).



Coomassie blue staining of purified CCDC82 protein (Cat# [TP307469]). The protein was produced from HEK293T cells transfected with CCDC82 cDNA clone (Cat# RC207469) using MegaTran 2.0 (Cat# [TT210002]).