

Product datasheet for **RC207468**

C16orf44 (KLHL36) (NM_024731) Human Tagged ORF Clone

Product data:

Product Type:	Expression Plasmids
Product Name:	C16orf44 (KLHL36) (NM_024731) Human Tagged ORF Clone
Tag:	Myc-DDK
Symbol:	C16orf44
Synonyms:	C16orf44
Mammalian Cell Selection:	Neomycin
Vector:	pCMV6-Entry (PS100001)
E. coli Selection:	Kanamycin (25 ug/mL)



[View online »](#)

ORF Nucleotide Sequence:

>RC207468 ORF sequence
 Red=Cloning site Blue=ORF Green=Tags(s)

TTTTGTAATACGACTCACTATAGGGCGGCCGGAATTCGTCGACTGGATCCGGTACCGAGGAGATCTGCC
 GCC**CGATCGCC**

ATGATGGAGGAAGCAGGCAGACGCGAGTGTCTCGGCCATAACAAGATCAGCGAATCATCAAAGGTATACC
 GCTGGGCCGACCACTCAAGCACGGTGTGCAGCGGCTGAACGAGCAGCGTCTCCGCGGGCTTCTGCGA
 CGTCGCTCTGGTGGCCGATGAGCAGCGTGTGCCAGCCATCGAACCTGTGGCCGTGTGCAGCGACTAC
 TTCAACTCCATGTTACCATCGGCATGCGGGAAGCTTTCCAGAAGGAGGTGGAGCTGATCGGCGCCTCT
 ACATTGGGCTCAAGGCCGTGGTGGACTTCTGTACGGCGGGAGCTGGTGTGGATGGCGCAACATTGA
 CTACGCTCTGGAGACGGCTCACCTGTGCAGATCTGGACGGTGGTAGACTTCTGTGTGAGTACCTGGAG
 CAGGAGGTGAGCGAGGACAACCTACCTGTACCTGCAGGAGCTGGCCTCCATCTACAGCCTCAAGCGGCTT
 ATGCCTTCATCGATGGCTTCATCCTGAACCACTTCGGCACGCTGTCTTTACGCCGACTTCTGCAGAA
 CGTCTCCATGCAGAAGCTGTGTCTACCTGAGCAGCAGCGAGGTGCAGCGGGAGTGTGAGCAGCACCTC
 TTGCAGGCCGCCCTGCAGTGGCTGACGCAGCAGCCCGAGCGCAGGCCACGCCGCCAGGTGTGGAGA
 ACATCCACTTCCCCTCATCCCCAAGAACGACCTGCTGCACCCGCTCAAGCCGGCCGTGTCTCGTGTCT
 GCCCAAGGAGGCCAACTGCGAGGGCTTCATCGAGGAGGCCGTGCGCTACCAACAACCTGGCGGCCAG
 CCCGTCATGCAGACCAAGCGCACGGCGTGCACCAACCAGGAGCGCCTGCTGTTTGTGGCGCGGAGG
 TCTCCGAGCGGTGTCTGGAGCTCAGTGACGACACCTGCTACCTGGACGCCAAGAGCGAGCAGTGGGTCAA
 AGAGACGCCGCTGCCCGCCGGCGGAGCCACCACTGTGTGCGGGTGTGGGGGCTTCACTTTCATCGCC
 GCGGCGAGCTTCTACGGGACAACGGAGGGATGCGGCCCTCAATCTTCTTTATAGGTATGACCCCGCT
 GTAAACAGTGGATCAAGGTGGCTCCATGAACAGCGCCGTGTGGATTCTACCTTCCATCCATCCAAAGA
 CATGCTGGTGGCCATCGCGGCCGGAATGAGAACGGAGCGCTCTCTTCAGTAGAGACGTACAGTCCCAAG
 ACTGACTCCTGGTCTATGTGGCCGGCTTGCCAAGTTACGTACGGCCACGCGGCACCATCTACAAG
 ACTTCGTGTACATCTCGGGGGCCACGACTACCAAATTGGCCCTACCGCAAGAACCTGTATGCTACGA
 CCACCGGACAGACGTGTGGGAGGAGCGCGGCCATGACCACGGCGCGGGCTGGCACAGCATGTGCAGC
 CTGGGTGACAGCATCTACTCCATCGGGGCGAGCATGACAACATCGAGTCCATGGAGCGCTTCGACGTGC
 TGGCGTGGAGGCTACAGCCCGCAGTGAACCAAGTGGACCCGCTGGCGCCGCTGCTGCACGCCAACAG
 CGAGTCGGCGTGGCAGTGTGGGAGGCCGCATCTACATCCTGGCGGCTACAGTGGGAGAACACTGCC
 TTCTCAAAGACCGTGCAGGTGTACGACCGGAGGCCGACAAGTGGAGCAGGGCGTGCAGCTGCCAAGG
 CCATCGCTGGCGGGTCCGCCTGTGTCTGCGCCCTGGAGCCACGGCCAGAGGACAAGAAGAAGAAAGCAA
 AGCAAGAGGCACCAGGACCGGGGCCAG

ACGCGTACGCGGCCGCTCGAGCAGAACTCATCTCAGAAGAGGATCTGGCAGCAAATGATATCCTGGATT
 ACAAGGATGACGACGATAAGGTTTAA

Protein Sequence:

>RC207468 protein sequence
 Red=Cloning site Green=Tags(s)

MMEGRQTRVSRPYKISESSKVYRWADHSSTVLQRLNEQRLRGLFCDVVLVADEQRPVPAHRNLLAVCS
 DYNFNSMFTIGMREAFQKEVELIGASYIGLKAVVDFLYGGELVLDGGNIDYVLETAHLLQIWTVVDFCCEYLE
 QEVSEDNLYLQELASIYSLKRLDAFIDGFILNHFGLSFTPDFLQNVSMQKLCVYLSSEVQRECEHDL
 LQAALQWL TQPEREAHARQVLENIHFPLIPKNDLLHRVKPAVCSLLPKEANCEGFIEEAVRYHNNLAAQ
 PVMQTKRTALRTNQERLLFVGGEVSERCLELSDDTCYLDAKSEQWVKETPLPARRSHHCVAVLGGFIFIA
 GGSF SRDNGGDAASNLLYRYDPRCKQWIKVASMNQRRVDFYLASIEDMLVAIGGRNENGALSSVETYS
 PKTDSWSYVAGLPRFTYGHAGTIYKDFVYISGGHDYQIGPYRKNLLCYDHRTDVWEERRPMTTARGW
 HSMCS LGDSIYSIGSDDNIESMERFDVLGVEAYSPQCNQWTRVAPLLHANSESGVAVWEGRIYILGGY
 SWENTA FSKTVQVYDREADKWSRQVLDLPKAIAGGSACVCALEPRPEDKKGKGRHQDRGQ

TRTRPLEQKLI SEEDLAANDILDYKDDDDKV

Chromatograms: https://cdn.origene.com/chromatograms/mk6757_g05.zip

Restriction Sites: SgfI-MluI

Cloning Scheme:



ACCN: NM_024731

ORF Size: 1848 bp

OTI Disclaimer: The molecular sequence of this clone aligns with the gene accession number as a point of reference only. However, individual transcript sequences of the same gene can differ through naturally occurring variations (e.g. polymorphisms), each with its own valid existence. This clone is substantially in agreement with the reference, but a complete review of all prevailing variants is recommended prior to use. [More info](#)

OTI Annotation: This clone was engineered to express the complete ORF with an expression tag. Expression varies depending on the nature of the gene.

Components: The ORF clone is ion-exchange column purified and shipped in a 2D barcoded Matrix tube containing 10ug of transfection-ready, dried plasmid DNA (reconstitute with 100 ul of water).

Reconstitution Method:

1. Centrifuge at 5,000xg for 5min.
2. Carefully open the tube and add 100ul of sterile water to dissolve the DNA.
3. Close the tube and incubate for 10 minutes at room temperature.
4. Briefly vortex the tube and then do a quick spin (less than 5000xg) to concentrate the liquid at the bottom.
5. Store the suspended plasmid at -20°C. The DNA is stable for at least one year from date of shipping when stored at -20°C.

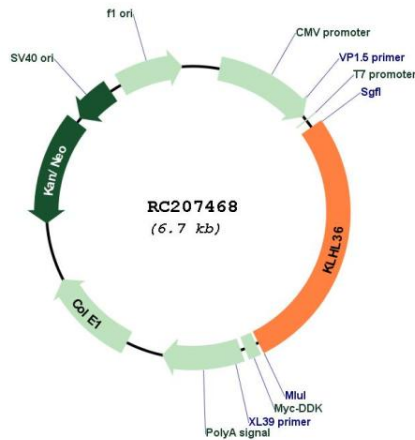
RefSeq: [NM_024731.2, NP_079007.2](#)

RefSeq Size: 2211 bp

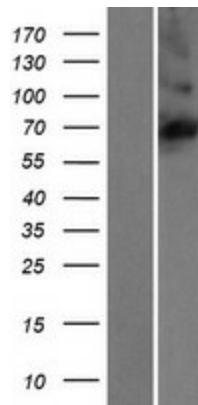
RefSeq ORF: 1851 bp

Locus ID: 79786
UniProt ID: [Q8N4N3](#)
Cytogenetics: 16q24.1
Domains: BTB, Kelch
MW: 69.9 kDa
Gene Summary: Probable substrate-specific adapter of an E3 ubiquitin-protein ligase complex which mediates the ubiquitination and subsequent proteasomal degradation of target proteins. [UniProtKB/Swiss-Prot Function]

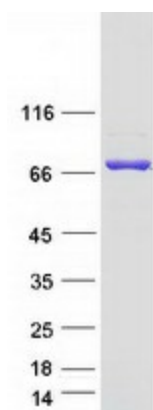
Product images:



Circular map for RC207468



Western blot validation of overexpression lysate (Cat# [LY411128]) using anti-DDK antibody (Cat# [TA50011-100]). Left: Cell lysates from untransfected HEK293T cells; Right: Cell lysates from HEK293T cells transfected with RC207468 using transfection reagent MegaTran 2.0 (Cat# [TT210002]).



Coomassie blue staining of purified KLHL36 protein (Cat# [TP307468]). The protein was produced from HEK293T cells transfected with KLHL36 cDNA clone (Cat# RC207468) using MegaTran 2.0 (Cat# [TT210002]).