

Product datasheet for **RC207467**

C10orf88 (NM_024942) Human Tagged ORF Clone

Product data:

Product Type:	Expression Plasmids
Product Name:	C10orf88 (NM_024942) Human Tagged ORF Clone
Tag:	Myc-DDK
Symbol:	C10orf88
Synonyms:	PAAT
Mammalian Cell Selection:	Neomycin
Vector:	pCMV6-Entry (PS100001)
E. coli Selection:	Kanamycin (25 ug/mL)



[View online »](#)

ORF Nucleotide Sequence:

>RC207467 ORF sequence
 Red=Cloning site Blue=ORF Green=Tags(s)

TTTTGTAATACGACTCACTATAGGGCGGCCGGGAATTCGTCGACTGGATCCGGTACCGAGGAGATCTGCC
 GCC**CGCATCGCC**

ATGGAGACGCGGACCGAGGACGGGGCCTCACCCGCCGCCACGCTGGCCTCTTCTGGGATGTTGCAG
 GCGGGCCCTGACCCACAGCCTCCTCCTCACCCGGCCGGTCTCGGCCCGGTGACTTCGACTGGGAGGA
 GCTGCTGGCACCCTGCTCCAGGTGAGGATCTGGTGATTTTGAAGAGAAACCACAACAACAAAGATGAA
 AACCCCTGCTTCTTTACCTGAGGTGTGGCCCTGATGGAGGTGAAGAAATCGTTCTATTGGCATTTTAA
 GTTCAGCAAGAAATATGGAAGTGTACTTAGGAGAGGAGTACTGTGAACCAAGTAGGGGCAAGAATGTTTG
 TACTGTCTGGATGACAGTGAACATGAAAAGATCATTGTATAAAAAAATCTAAAATTGGAGTCTCC
 ACACATGCTTGTAAAATAAAGTTGCTCTCCTTTGGCGAAAGGCAGTGTGTTCATCAGTAAAGTTGTGG
 TACACATGAGATCAGTTTTTGCAAATCTTCAACAAGCTCTCCTGCTCTAGGATCAAGGATAGACCTTGA
 CAAGGTCAAACCATAATGGAGTCCATGGGGTCAAAGTTATCTCCTGGAGCTCAGCAGTTGATGGATATG
 GTTAGGTGTGAGCAGCGGAATTGTATCCCATTTGGAGAGCAGTTCAAGTCCGGTGTGGGCAATTCTGGAT
 ACAAGCATATGATTGGACTACAATCCTCATCTACCTTAGGAACCTTAAACAAGTCGCTCCACACCTTT
 TCCTTTTGAAGTGGATTGACATCTGGGAACGTGACTGAAAACCTTACAACTTACATTGATAAAAAGTACA
 CAACTGCCTGGTGGAGAGAATTTACCAAGCTTGATGAGTGTAAAGTTATGCCTCAAACCATTCCTTTT
 TTGAAAATGATCTTAAAAATGCAATGGCCTCTTTCTTACCAAAGAAAGTAAAGTGACAACCTCAAATATACC
 CAACTCCGAGTTGCTGCCTTTTCTCCAGAATTTATGTAGTCAAGTTAATCATCTCCATGTGGGAAATAAG
 ACCGAGTGTGAGAAAACATACCAAGCATGGTGAACGCATTCTGGTGTGGAATGGAAGAGCAATCTA
 TTTGCTCCTACTTGGAAAAGATTTCTTAAAAATATGGAAGTGTGAAAAGAACTTATGGATTACAT
 TGATCAGCGAATACATGAACTCCAGGAGCACATTGATGATAAGATTGCTTTGTTACTGGATTTGCTGCAA
 AATCCTAACTCCCGCCCACTGGGATACCTCTAAGACATTATGACTCTGGAGAAAGACTTCAAATGGAG
 AAAGA

ACGCGTACGCGGCCGCTCGAGCAGAACTCATCTCAGAAGAGGATCTGGCAGCAAATGATATCCTGGATT
 ACAAGGATGACGACGATAAGGTTTAA

Protein Sequence:

>RC207467 protein sequence
 Red=Cloning site Green=Tags(s)

METRTEDGGLTRRPTLASSWDVAGGALTHSLLLTRAGLPGDFDWEELLAPPAPGQDLVILKRHNHNKDE
 NPCFLYLRCGPDGEEIASIGILSSARNMEVYL GEEYCGTSRGNVCTVLDSEHEKIIILYKKNLKLESS
 THACKIKLLSFGERQCVFISKVVVHMRSVFANSSTSSPALGSRIDLKQVQTIMESMGSKLSPGAQQLMDM
 VRCQQRNCIPIGEQLQSVLGNISYKHMIGLQSSSTLGLTNKSSSTPFPRFTGLTSGNVTENLQTYIDKST
 QLPGGENSTKLDECKVMPQNHSLFENDLKNAMASFLPKKVDNSNIPNSELLPFLQNLCSQVNHHLVGNK
 TECQENITKHGERILGVGMEEQSICSYLEKILSKNMELMEKKLMDYIDQRIHELQEHIDDKIALLLDLLQ
 NPNSPPTGIPLRHYDSGERLSNGER

TRTRPLEQKLISEEDLAANDILDYKDDDDKV

Chromatograms:

https://cdn.origene.com/chromatograms/mk6336_g03.zip

Restriction Sites:

Sgfl-Mlul

Cloning Scheme:


ACCN: NM_024942

ORF Size: 1335 bp

OTI Disclaimer: The molecular sequence of this clone aligns with the gene accession number as a point of reference only. However, individual transcript sequences of the same gene can differ through naturally occurring variations (e.g. polymorphisms), each with its own valid existence. This clone is substantially in agreement with the reference, but a complete review of all prevailing variants is recommended prior to use. [More info](#)

OTI Annotation: This clone was engineered to express the complete ORF with an expression tag. Expression varies depending on the nature of the gene.

Components: The ORF clone is ion-exchange column purified and shipped in a 2D barcoded Matrix tube containing 10ug of transfection-ready, dried plasmid DNA (reconstitute with 100 ul of water).

- Reconstitution Method:**
1. Centrifuge at 5,000xg for 5min.
 2. Carefully open the tube and add 100ul of sterile water to dissolve the DNA.
 3. Close the tube and incubate for 10 minutes at room temperature.
 4. Briefly vortex the tube and then do a quick spin (less than 5000xg) to concentrate the liquid at the bottom.
 5. Store the suspended plasmid at -20°C. The DNA is stable for at least one year from date of shipping when stored at -20°C.

RefSeq: [NM_024942.4](#)

RefSeq Size: 3102 bp

RefSeq ORF: 1338 bp

Locus ID: 80007

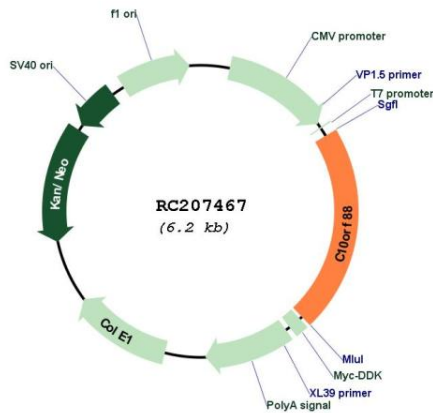
UniProt ID: [Q9H8K7](#)

Cytogenetics: 10q26.13

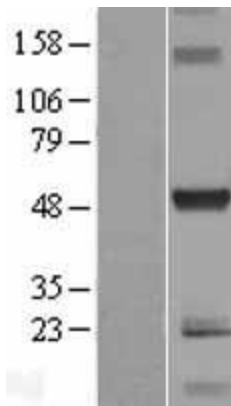
MW: 49.2 kDa

Gene Summary: ATPase that regulates mitochondrial ABC transporters ABCB7, ABCB8/MITOSUR and ABCB10 (PubMed:25063848). Regulates mitochondrial ferric concentration and heme biosynthesis and plays a role in the maintenance of mitochondrial homeostasis and cell survival (PubMed:25063848).[UniProtKB/Swiss-Prot Function]

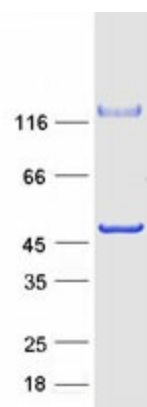
Product images:



Circular map for RC207467



Western blot validation of overexpression lysate (Cat# [LY410974]) using anti-DDK antibody (Cat# [TA50011-100]). Left: Cell lysates from untransfected HEK293T cells; Right: Cell lysates from HEK293T cells transfected with RC207467 using transfection reagent MegaTran 2.0 (Cat# [TT210002]).



Coomassie blue staining of purified C10orf88 protein (Cat# [TP307467]). The protein was produced from HEK293T cells transfected with C10orf88 cDNA clone (Cat# RC207467) using MegaTran 2.0 (Cat# [TT210002]).