

Product datasheet for **RC207466**

ZNF703 (NM_025069) Human Tagged ORF Clone

Product data:

Product Type:	Expression Plasmids
Product Name:	ZNF703 (NM_025069) Human Tagged ORF Clone
Tag:	Myc-DDK
Symbol:	ZNF703
Synonyms:	NLZ1; ZEPPO1; ZNF503L; ZPO1
Mammalian Cell Selection:	Neomycin
Vector:	pCMV6-Entry (PS100001)
E. coli Selection:	Kanamycin (25 ug/mL)



[View online »](#)

ORF Nucleotide Sequence:

>RC207466 ORF sequence
 Red=Cloning site Blue=ORF Green=Tags(s)

TTTTGTAATACGACTCACTATAGGGCGGCCGGGAATTCGTCGACTGGATCCGGTACCGAGGAGATCTGCC
 GCC**CGGATCGCC**

ATGAGCGATTGCCCCGCTGGATCTAACCCAAGGACACCCGAAAGCAGCGGCAGCGGCAGCGCGCGCGGCG
 GGAAGAGGCCGGCGGTGCCGGCAGCGGTGCCCTTTGCCACCGCGGACCCCTGCGCCAGGCGAACCG
 GCTCCCGATCAGGGTCTGAAGATGCTGAGCGCTCACACCGGTACCTCTGCACCCGGAGTACCTGCAG
 CCGCTGCTCCTCACTCCCGTCAGCCCCATTGAGCTGGACGCCAAGAAGAGCCCTTGGCGTGTGGCTC
 AGACCTGCTCGCAGATCGGCAAGCCGACCCGCCCTCTCAAACCTCAACTCGGTGGCGGGCGCGC
 CAACGGGTGGGAGCGGAGAAGGACCCCGCGCTCAGCCCCGGGCGCCCTCCGCAGCCGCGGCCCTG
 AAGCAGCTGGGGACTCACCGCCGAGGACAAGTCCAGCTTCAAGCCCTACTCCAAGGGTCCGGCGCG
 GCGACTCCCGAAAGACAGCGGCTCCTCCTCGGTGCTTCCACCTCCTCCTCGTCTCCTCGTCCCCGG
 AGACAAGCGGGTTCAGGGTCCCAGCGCCGCTGCCCGCCCTTCCCCCGCATGGAGCGCCGGTCTCC
 GCATCCTCGTCTCGTCTCGCCCGCGGCTCCCGCGCGGCTCCCCGCACCACTCTGACTGCAAGAAGC
 GCGGCGGGGTGGCGCGGGGAGCTGGACAAGAAAGACCAGGAGCCCAAGCCAGCCCGGAGCCGGCAGC
 CGTGAGCCCGCGCGCGGTGGGAGCCGGGGCGCACGGTGGCGCCGAGTCCGGGGCTCCGGGCGCAAG
 TCCGAGCCGCCCTCGGCGCTGGTGGGGCCGGCCACGTGGCGCCGGTGTCTCCCTACAAGCCGGGCACT
 CGGTGTTCCCGTGCAGCCCTCCAGATTGGCTACCACGGCTCCATCGTGGGCGCTACGCCGGTACCC
 GTCTCAGTTCTGTGCTGGCTGGATCCTAGCAAGTCCGGCCTCGTGGGAGCCAGCTGTCTGGGGCCTG
 GGCCTGCCCGGGCAAGCCCCCAGCTCAGCCCGCTCACCGGGCCTCCCCGCCCTCCTCCTGCAGG
 GATTATGCCCGGACCCCTATTGCTTGGGAGTTACCACGGCGCTCGCACCTCGGCGGCTCCAGCTGCTC
 CACTGACAGCGCCACGACCCTGCCGGGCCAGCCTGAAGGCGGGGGTACCCCGTGGTGTACCCCGGG
 CACCCGCTGCAGCCCGCGGCTCTCGTCCAGCGCCAGGCCGCGCTCCCCGCCACCCGCTTACA
 CCTACGGTTCATGCTGCAGAACGAACCCTGCCGCACAGCTGCAACTGGGTGGCAGCCAGTGGGCGTG
 CGACAAGCGCTTCGCCACCTCGGAGGAGTGTCTAGCCACCTACGGACCCACAGGCCCTGCCGGGAGCC
 GAGAACTTCTGGCCGCTACCCCGGGGCTCGGGCTGGGCAGCGCCGCCCGCCGCCCGCCGCCCGC
 CCTCCTGCCATCTGCACCTCCCCCGCCCGCCCGCCCGCAGCCCGGGTGTGTCTTGCAGGAATCC
 ACACACTTTGGGCTAAGCCGGTACCACCCTATGGCAAGAGCCACTTATCCACAGCGGGGGCCTGGCC
 GTGCCGCTCCTCCACAGCCGACCCCTACTATTGCCATACGGCTGTATGGACAGAGACTAGCTTCAG
 CCTCGGCGCTGGGATACCAG

ACGCGTACGCGGCCGCTCGAGCAGAAACTCATCTCAGAAGAGGATCTGGCAGCAAATGATATCCTGGATT
 ACAAGGATGACGACGATAAGGTTTAA

Protein Sequence:

>RC207466 protein sequence
 Red=Cloning site Green=Tags(s)

MSDSPAGSNPRTPESSGSGSGGGKRPVPAVAVSLLPPADPLRQANRLPIRVLKMLSAHTGHLHPEYLQ
 PLSSTPVSPIELDAKKSPLALLAQTCISQIGKPDPPPSSKLNVAANGLGAEKDPGRSAPGAASAAAAL
 KQLGDSPAEDKSSFYPYKSGSGGDSRKDSGSSSVSSSSSSSPGDKAGFRVPSAACPPFPPHGAPVS
 ASSSSSPGSRGGSPHSDCKNGGSGGGELDKKQEPKPSPEPAVSRGGGEPGAHGAESGASGRK
 SEPPSALVGAGHVAPVSPYKPGHVFPLPPSSIGYHGSIVGAYAGYPSQFVPGLDPSKSLVGGQLSGGL
 GLPPGKPPSSSPLTGASPPSFLQGLCRDPYCLGGYHGASHLGGSSCSTCSAHPAGPSLKAGGYPLVYPG
 HPLQPAALSSSAAQAALPGHPLYTYGFMLQNEPLPHSCNVAASGPCDKRFATSEELLSHLRTHALPGA
 EKLLAAYPGASGLGSAAAAAAAAASCHLHLPPPAPGSPGSLSLRNPHTLGLSRYHPYKSHLSTAGGLA
 VPSLPTAGPYSPYALYQRLASASALGYQ

TRTRPLEQKLISEEDLAANDILDYKDDDDKV

Chromatograms:

https://cdn.origene.com/chromatograms/mk6802_b07.zip

Restriction Sites: SgfI-MluI

Cloning Scheme:



ACCN: NM_025069

ORF Size: 1770 bp

OTI Disclaimer: The molecular sequence of this clone aligns with the gene accession number as a point of reference only. However, individual transcript sequences of the same gene can differ through naturally occurring variations (e.g. polymorphisms), each with its own valid existence. This clone is substantially in agreement with the reference, but a complete review of all prevailing variants is recommended prior to use. [More info](#)

OTI Annotation: This clone was engineered to express the complete ORF with an expression tag. Expression varies depending on the nature of the gene.

Components: The ORF clone is ion-exchange column purified and shipped in a 2D barcoded Matrix tube containing 10ug of transfection-ready, dried plasmid DNA (reconstitute with 100 ul of water).

- Reconstitution Method:
1. Centrifuge at 5,000xg for 5min.
 2. Carefully open the tube and add 100ul of sterile water to dissolve the DNA.
 3. Close the tube and incubate for 10 minutes at room temperature.
 4. Briefly vortex the tube and then do a quick spin (less than 5000xg) to concentrate the liquid at the bottom.
 5. Store the suspended plasmid at -20°C. The DNA is stable for at least one year from date of shipping when stored at -20°C.

RefSeq: [NM_025069.3](#)

RefSeq Size: 2174 bp

RefSeq ORF: 1773 bp

Locus ID: 80139

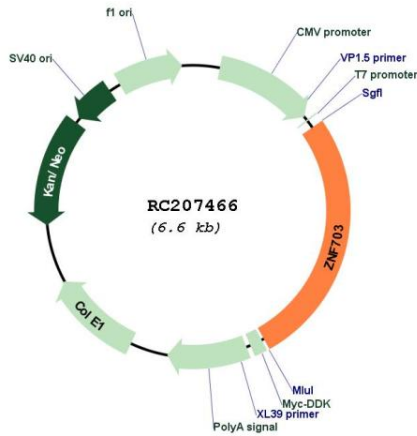
UniProt ID: [Q9H7S9](#)

Cytogenetics: 8p11.23

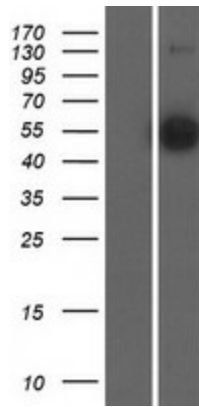
MW: 58.2 kDa

Gene Summary: Transcriptional corepressor which does not bind directly to DNA and may regulate transcription through recruitment of histone deacetylases to gene promoters. Regulates cell adhesion, migration and proliferation. May be required for segmental gene expression during hindbrain development.[UniProtKB/Swiss-Prot Function]

Product images:



Circular map for RC207466



Western blot validation of overexpression lysate (Cat# [LY410937]) using anti-DDK antibody (Cat# [TA50011-100]). Left: Cell lysates from untransfected HEK293T cells; Right: Cell lysates from HEK293T cells transfected with RC207466 using transfection reagent MegaTran 2.0 (Cat# [TT210002]).