

Product datasheet for **RC207463**

DEXI (NM_014015) Human Tagged ORF Clone

Product data:

Product Type: Expression Plasmids
Product Name: DEXI (NM_014015) Human Tagged ORF Clone
Tag: Myc-DDK
Symbol: DEXI
Synonyms: MYLE
Mammalian Cell Selection: Neomycin
Vector: pCMV6-Entry (PS100001)
E. coli Selection: Kanamycin (25 ug/mL)
ORF Nucleotide Sequence: >RC207463 ORF sequence
Red=Cloning site Blue=ORF Green=Tags(s)

TTTTGTAATACGACTCACTATAGGGCGGCCGGAATTCGTCGACTGGATCCGGTACCGAGGAGATCTGCC
GCC**CGATCGCC**

ATGCTCGGCGCCCGGGTCGCGGCCACCTGGACGCACTGGGCCCCCTGGTCCCCTACGTGCCGCCCGCC
TGCTGCCCTCTATGTTCTACGTGGGCTGTTCTTCGTCATGTGCTGATCCTGTACTACGCCTTCTCAT
GGAGTACATCGTCCTCAACGTGGGCTCGTCTTCTGCCGAGGACATGGACCAGGCGCTCGTGACCTC
GGCGTGCTCTCCGACCCGGCTCGGGCCTTACGATGCTGACTCGGAGCTCGACGCTTTGATGCGTACT
TGGAG

ACGCGTACGCGGCCGCTCGAGCAGAACTCATCTCAGAAGAGGATCTGGCAGCAAATGATATCCTGGATT
ACAAGGATGACGACGATAAGGTTTAA

Protein Sequence: >RC207463 protein sequence
Red=Cloning site Green=Tags(s)
MLGARVA AHLDALG PLVPYVPP L LPSMFYVGLFFVNV L ILYYAF LMEYI VLVNGLVFLPEDMDQALV DL
GVLSDPG SGLYDADSEL DVFDAYLE

TRTRPLEQKLISEEDLAANDILDYKDDDDKV

Chromatograms: https://cdn.origene.com/chromatograms/mk6336_e11.zip

Restriction Sites: SgfI-MluI



[View online »](#)

Cloning Scheme:


ACCN: NM_014015

ORF Size: 285 bp

OTI Disclaimer: The molecular sequence of this clone aligns with the gene accession number as a point of reference only. However, individual transcript sequences of the same gene can differ through naturally occurring variations (e.g. polymorphisms), each with its own valid existence. This clone is substantially in agreement with the reference, but a complete review of all prevailing variants is recommended prior to use. [More info](#)

OTI Annotation: This clone was engineered to express the complete ORF with an expression tag. Expression varies depending on the nature of the gene.

Components: The ORF clone is ion-exchange column purified and shipped in a 2D barcoded Matrix tube containing 10ug of transfection-ready, dried plasmid DNA (reconstitute with 100 ul of water).

- Reconstitution Method:**
1. Centrifuge at 5,000xg for 5min.
 2. Carefully open the tube and add 100ul of sterile water to dissolve the DNA.
 3. Close the tube and incubate for 10 minutes at room temperature.
 4. Briefly vortex the tube and then do a quick spin (less than 5000xg) to concentrate the liquid at the bottom.
 5. Store the suspended plasmid at -20°C. The DNA is stable for at least one year from date of shipping when stored at -20°C.

Note: Plasmids are not sterile. For experiments where strict sterility is required, filtration with 0.22um filter is required.

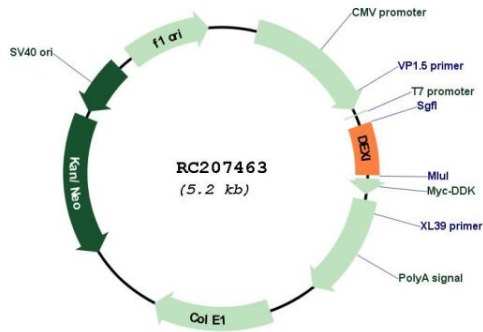
RefSeq: [NM_014015.4](#)

RefSeq Size: 1580 bp

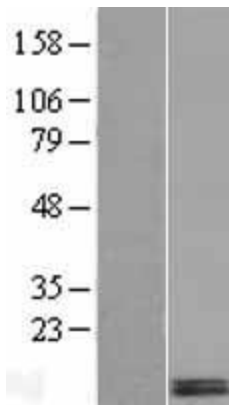
RefSeq ORF: 288 bp

Locus ID: 28955
 UniProt ID: [O95424](#)
 Cytogenetics: 16p13.13
 Protein Families: Transmembrane
 MW: 10.4 kDa

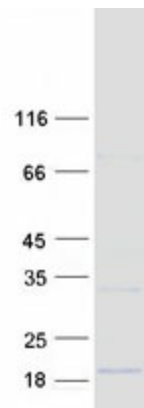
Product images:



Circular map for RC207463



Western blot validation of overexpression lysate (Cat# [LY415520]) using anti-DDK antibody (Cat# [TA50011-100]). Left: Cell lysates from untransfected HEK293T cells; Right: Cell lysates from HEK293T cells transfected with RC207463 using transfection reagent MegaTran 2.0 (Cat# [TT210002]).



Coomassie blue staining of purified DEXI protein (Cat# [TP307463]). The protein was produced from HEK293T cells transfected with DEXI cDNA clone (Cat# RC207463) using MegaTran 2.0 (Cat# [TT210002]).