

Product datasheet for **RC207459**

TUBB1 (NM_030773) Human Tagged ORF Clone

Product data:

Product Type:	Expression Plasmids
Product Name:	TUBB1 (NM_030773) Human Tagged ORF Clone
Tag:	Myc-DDK
Symbol:	TUBB1
Mammalian Cell Selection:	Neomycin
Vector:	pCMV6-Entry (PS100001)
E. coli Selection:	Kanamycin (25 ug/mL)



[View online »](#)

ORF Nucleotide Sequence:

>RC207459 ORF sequence
 Red=Cloning site Blue=ORF Green=Tags(s)

TTTTGTAATACGACTCACTATAGGGCGGCCGGGAATTCGTCGACTGGATCCGGTACCGAGGAGATCTGCC
 GCC**GCGATCGCC**

ATGCGTAAAATTGTCCATATTCAGATTGGCCAGTGTGCCAACAGATCGGAGCCAAGTTCTGGGAGATGA
 TTGGTGAGGAACACGGGATCGACTTGGCTGGGAGCGACCGCGGGCCCTCGGCCTTGACAGTGGAGAGAAT
 CAGCGTGTACTACAACGAAGCCTACGGTAGGAAATATGTGCCCGAGCAGTCTTGGTGGACCTAGAACCT
 GGGACGATGGACAGCATTGATCTAGCAAATTAGGAGCTCTTTCAACCCGACAGTTTTGTCCATGGTA
 ACTCTGGGGTGGCAACAACGGCCAAAGGCCACTACACGGAGGGAGCCGAGCTGATCGAGAATGTCTT
 AGAGGTGGTGGACAGAGAGTGGAGCTGTGACTGCCTGCAGGGCTTCCAGATCGTCCACTCCCTGGGC
 GGGGGCACAGGCTCCGGGATGGCACTCTGCTCATGAACAAGATTAGAGAGGAGTACCCGGACCGGATCA
 TGAATTCCTTCAGCGTCATGCCTTCTCCAAGGTGTCGGACACGGTGGTGGAGCCCTACAACCGGTTCT
 GTCTATCCACCAGCTGATTGAGAATGCAGATGCCTGTTTCTGCATTGACAATGAGGCCCTCTATGACATC
 TGCTTCGGTACCCTGAAGCTGACGACACCCACCTATGGGGATCTCAACCACCTAGTGTCTTGACCATGA
 GCGGCATAAACACCTCCCTCCGGTTCGGGTCAGCTCAACGCAGACCTGCGCAAGCTGGCGGTGAACAT
 GGTCCCCTTCCCCCGCTGCACTTCTTTATGCCCGGCTTGGCCCACTCACGGCCAGGGCAGCCAGCAG
 TACCGAGCCCTCTCCGTGGCCGAGCTCACCCAGCAGATGTTTCGATGCCCGCAATACCATGGCTGCCTGTG
 ACCTCCGCCGTGGCCGCTACCTCACAGTGGCCTGCATTTTCCGGGGCAAGATGTCCACCAAGGAAGTGA
 CCAGCAACTGCTCTCCGTGCAGACCAGGAACAGCAGCTGCTTTGTGGAGTGGATTCCCAACAACGTCAAG
 GTGGCTGTCTGCGACATCCCGCCCGGGGGCTGAGCATGGCCGCCACCTTCAATGGCAACAACACGGCCA
 TCCAAGAGATCTTAATAGGGTCTCTGAGCATTCTCAGCCATGTTCAAAGGAAAGCTTTTGTGCATCG
 GTACACCAGCGAAGGGATGGACATAAACGAATTTGGGGAAGCTGAAAATAACATCCATGATTTGGTATCC
 GAGTACCAACAATTTCAAGATGCCAAAGCAGTTCTAGAGGAAGATGAAGAGGTCACGGAGGAGGCAGAAA
 TGGAGCCAGAAGATAAGGGACAT

ACGCGTACGCGGCCGCTCGAGCAGAACTCATCTCAGAAGAGGATCTGGCAGCAAATGATATCCTGGATT
 ACAAGGATGACGACGATAAGGTTTAA

Protein Sequence:

>RC207459 protein sequence
 Red=Cloning site Green=Tags(s)

MREIVHIQIQCGNQIGAKFWEMIGEEHGIDLAGSDRGASALQLERISVYYNEAYGRKYVPRAVLVDLEP
 GTMDSIRSSKLGALFQPDSFVHGNSGAGNNWAKGHYTEGAELIENVLEVVRHESESCDCLQGFQIVHSLG
 GGTGSGMGTLLMNKIREEYPDRIMNSFSVMPSPKVSVDTVVEPYNAVL SIHQLIENADACFCIDNEALYDI
 CFRTLKLTTPTYGDLNHLVSLTMSGITTSRFPQQLNADLRKLA VNMVFPRLHFFMPGFAPLTAQGSQQ
 YRAL SVAELTQQMFDARNTMAACDLRRGRYLTVACIFRGKMSTKEVDQQLLSVQTRNSSCFVEWIPNNVK
 VAVCDIPRGLSMAATFIGNNTAIQEIFNRVSEHF SAMFKRKAFVHWYTS EGM DINEFGEAENNIHDLVS
 EYQQFQDAKAVLEEDVEEVAEMEPEDKGH

TRTRPLEQKLISEEDLAANDILDYKDDDDKV

Chromatograms:

https://cdn.origene.com/chromatograms/mk6235_f10.zip

Restriction Sites:

SgfI-MluI

Cloning Scheme:


ACCN: NM_030773

ORF Size: 1353 bp

OTI Disclaimer: The molecular sequence of this clone aligns with the gene accession number as a point of reference only. However, individual transcript sequences of the same gene can differ through naturally occurring variations (e.g. polymorphisms), each with its own valid existence. This clone is substantially in agreement with the reference, but a complete review of all prevailing variants is recommended prior to use. [More info](#)

OTI Annotation: This clone was engineered to express the complete ORF with an expression tag. Expression varies depending on the nature of the gene.

Components: The ORF clone is ion-exchange column purified and shipped in a 2D barcoded Matrix tube containing 10ug of transfection-ready, dried plasmid DNA (reconstitute with 100 ul of water).

- Reconstitution Method:**
1. Centrifuge at 5,000xg for 5min.
 2. Carefully open the tube and add 100ul of sterile water to dissolve the DNA.
 3. Close the tube and incubate for 10 minutes at room temperature.
 4. Briefly vortex the tube and then do a quick spin (less than 5000xg) to concentrate the liquid at the bottom.
 5. Store the suspended plasmid at -20°C. The DNA is stable for at least one year from date of shipping when stored at -20°C.

RefSeq: [NM_030773.2](#), [NP_110400.1](#)

RefSeq Size: 3496 bp

RefSeq ORF: 1356 bp

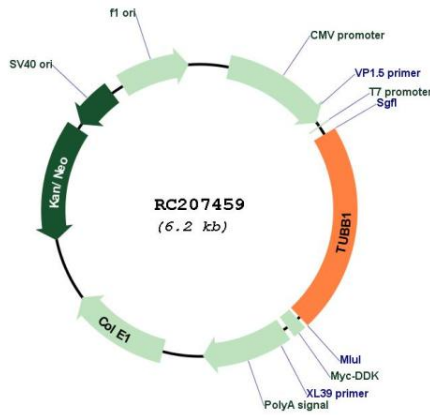
Locus ID: 81027

UniProt ID: [Q9H4B7](#)

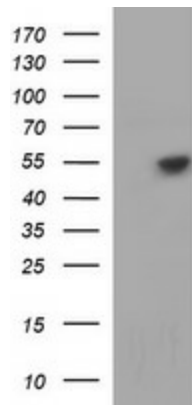
Cytogenetics: 20q13.32
Domains: tubulin
Protein Families: Druggable Genome
Protein Pathways: Gap junction, Pathogenic Escherichia coli infection
MW: 50.3 kDa

Gene Summary: This gene encodes a member of the beta tubulin protein family. Beta tubulins are one of two core protein families (alpha and beta tubulins) that heterodimerize and assemble to form microtubules. This protein is specifically expressed in platelets and megakaryocytes and may be involved in proplatelet production and platelet release. A mutations in this gene is associated with autosomal dominant macrothrombocytopenia. Two pseudogenes of this gene are found on chromosome Y.[provided by RefSeq, Jul 2010]

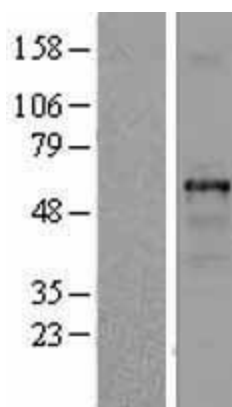
Product images:



Circular map for RC207459



HEK293T cells were transfected with the pCMV6-ENTRY control (Cat# [PS100001], Left lane) or pCMV6-ENTRY TUBB1 (Cat# RC207459, Right lane) cDNA for 48 hrs and lysed. Equivalent amounts of cell lysates (5 ug per lane) were separated by SDS-PAGE and immunoblotted with anti-TUBB1 (Cat# [TA506805]). Positive lysates [LY410723] (100ug) and [LC410723] (20ug) can be purchased separately from OriGene.



Western blot validation of overexpression lysate (Cat# [LY410723]) using anti-DDK antibody (Cat# [TA50011-100]). Left: Cell lysates from untransfected HEK293T cells; Right: Cell lysates from HEK293T cells transfected with RC207459 using transfection reagent MegaTran 2.0 (Cat# [TT210002]).