

Product datasheet for RC207458L1

CTRP4 (C1QTNF4) (NM_031909) Human Tagged Lenti ORF Clone

Product data:

Product Type:	Expression Plasmids
Product Name:	CTRP4 (C1QTNF4) (NM_031909) Human Tagged Lenti ORF Clone
Tag:	Myc-DDK
Symbol:	CTRP4
Synonyms:	CTRP4; ZACRP4
Mammalian Cell Selection:	None
Vector:	pLenti-C-Myc-DDK (PS100064)
E. coli Selection:	Chloramphenicol (34 ug/mL)
ORF Nucleotide Sequence:	The ORF insert of this clone is exactly the same as(RC207458).
Restriction Sites:	SgfI-MluI
Cloning Scheme:	

Cloning sites used for ORF Shuttling:



* The last codon before the Stop codon of the ORF.

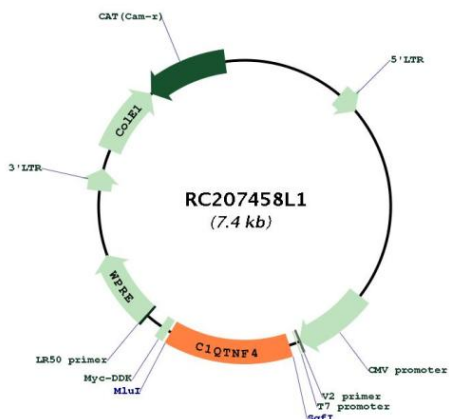
ACCN:	NM_031909
ORF Size:	987 bp



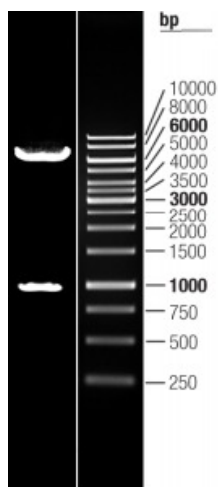
[View online »](#)

OTI Disclaimer:	The molecular sequence of this clone aligns with the gene accession number as a point of reference only. However, individual transcript sequences of the same gene can differ through naturally occurring variations (e.g. polymorphisms), each with its own valid existence. This clone is substantially in agreement with the reference, but a complete review of all prevailing variants is recommended prior to use. More info
OTI Annotation:	This clone was engineered to express the complete ORF with an expression tag. Expression varies depending on the nature of the gene.
Components:	The ORF clone is ion-exchange column purified and shipped in a 2D barcoded Matrix tube containing 10ug of transfection-ready, dried plasmid DNA (reconstitute with 100 ul of water).
Reconstitution Method:	<ol style="list-style-type: none">1. Centrifuge at 5,000xg for 5min.2. Carefully open the tube and add 100ul of sterile water to dissolve the DNA.3. Close the tube and incubate for 10 minutes at room temperature.4. Briefly vortex the tube and then do a quick spin (less than 5000xg) to concentrate the liquid at the bottom.5. Store the suspended plasmid at -20°C. The DNA is stable for at least one year from date of shipping when stored at -20°C.
RefSeq:	NM_031909.1
RefSeq Size:	1436 bp
RefSeq ORF:	990 bp
Locus ID:	114900
UniProt ID:	Q9BXJ3
Cytogenetics:	11p11.2
Domains:	C1Q
Protein Families:	Secreted Protein
MW:	35.3 kDa
Gene Summary:	May be involved in the regulation of the inflammatory network. Its role as pro- or anti-inflammatory seems to be context dependent (PubMed:21658842, PubMed:27086950). Seems to have some role in regulating food intake and energy balance when administered in the brain. This effect is sustained over a two-day period, and it is accompanied by decreased expression of orexigenic neuropeptides in the hypothalamus 3 h post-injection (By similarity). [UniProtKB/Swiss-Prot Function]

Product images:



Circular map for RC207458L1



Double digestion of RC207458L1 using SgfI and MluI